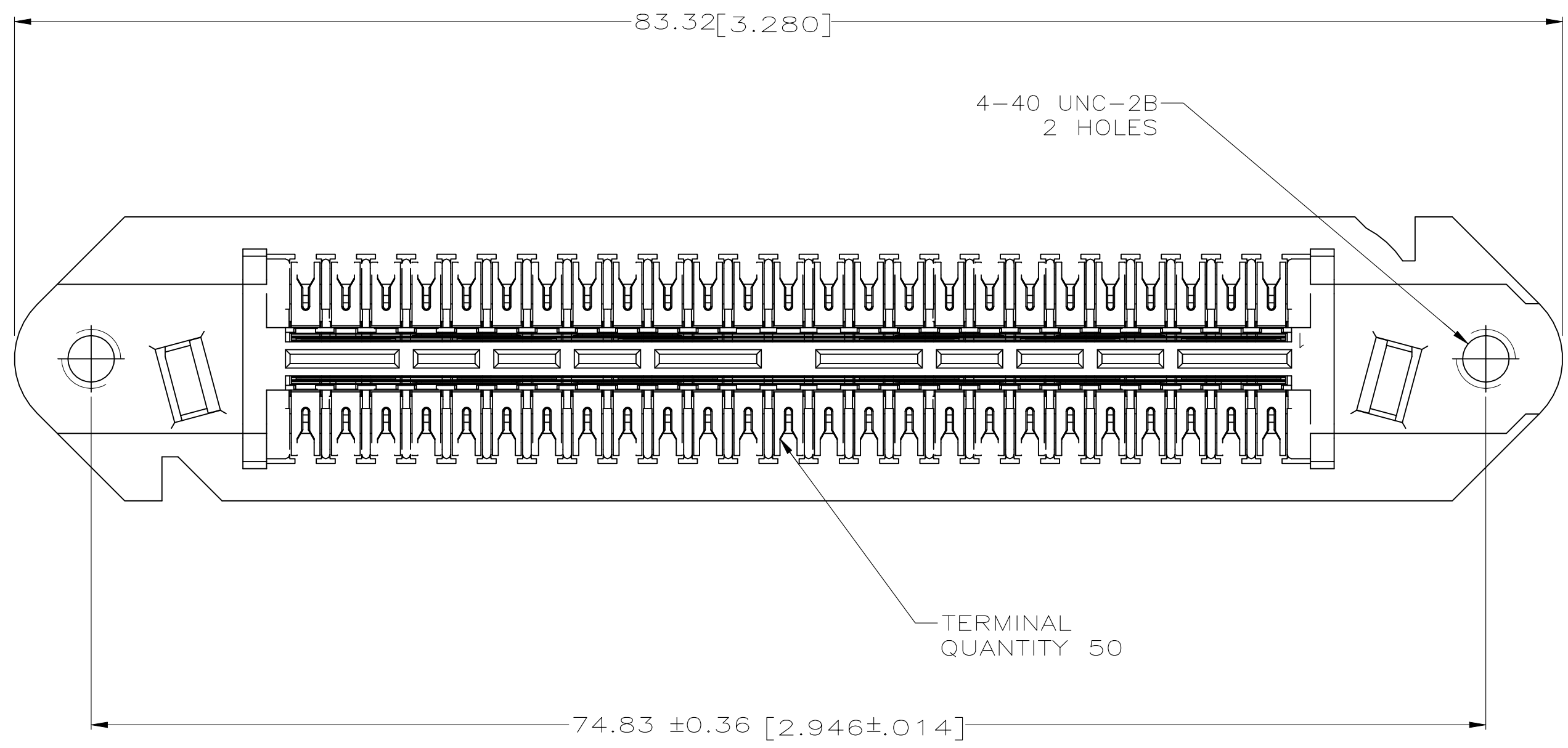
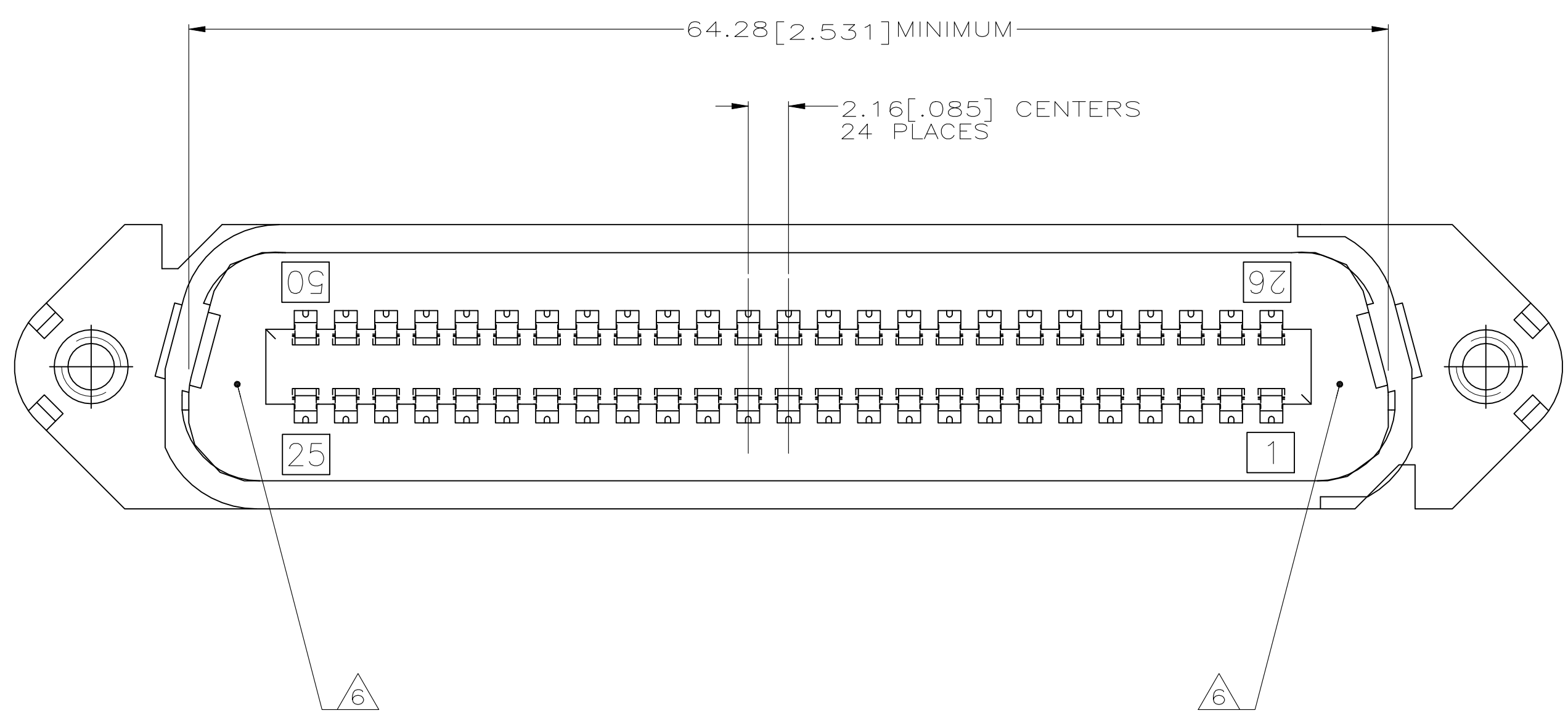
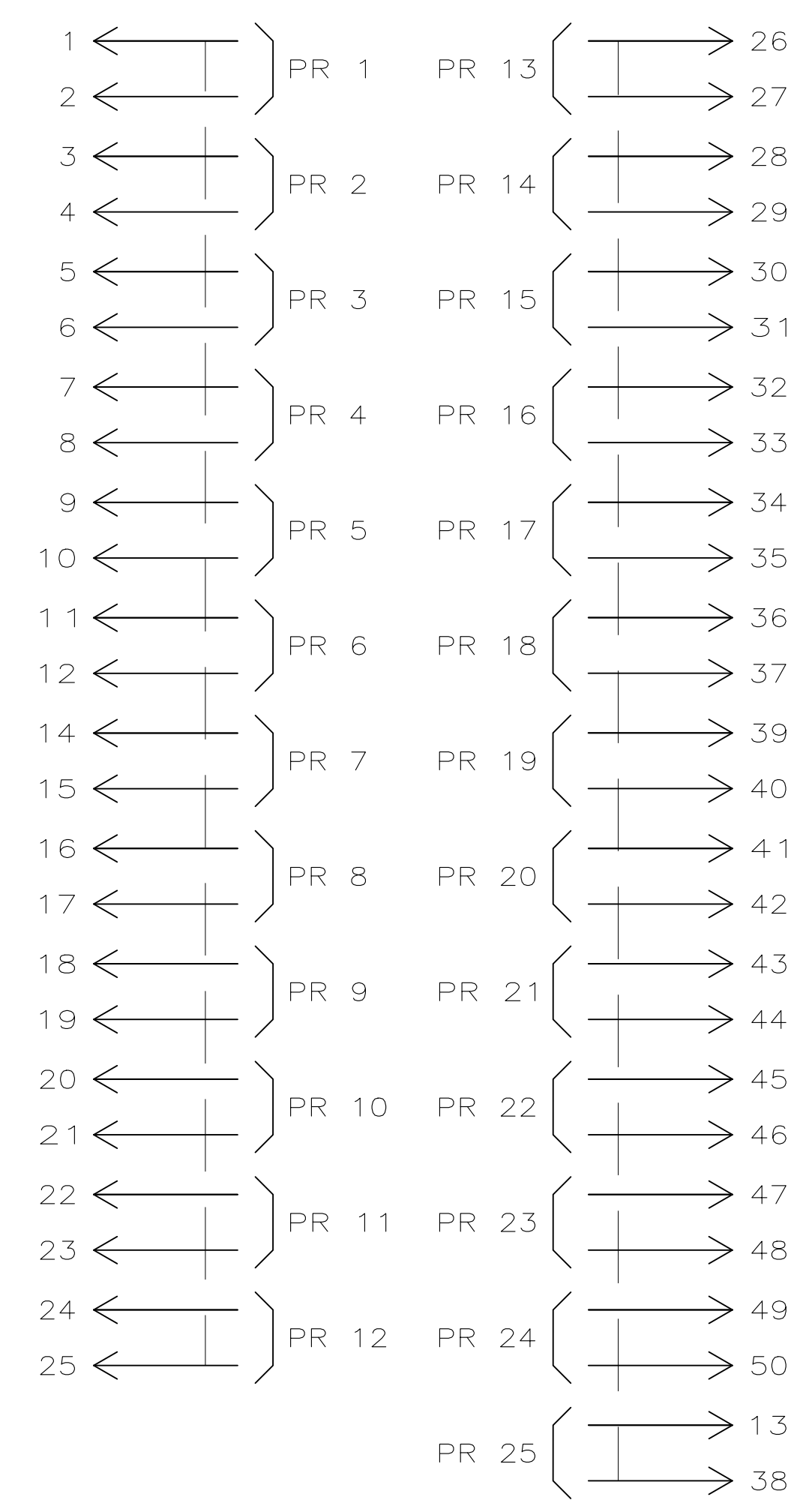
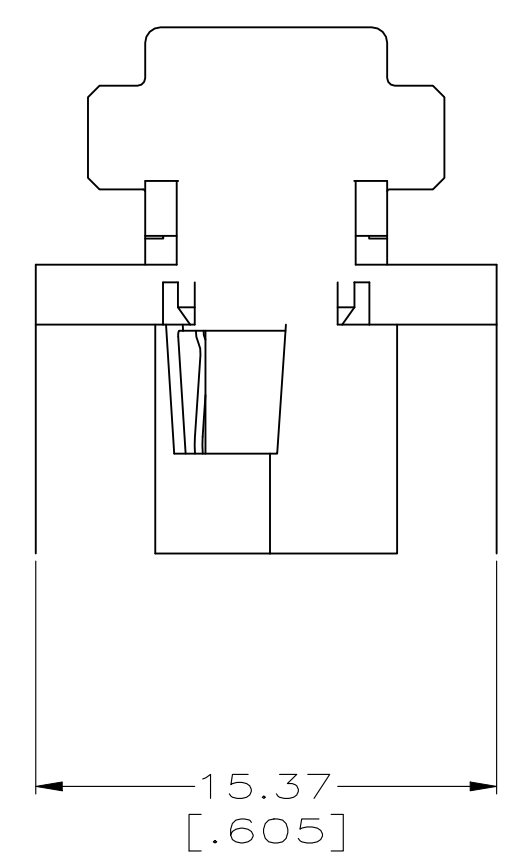
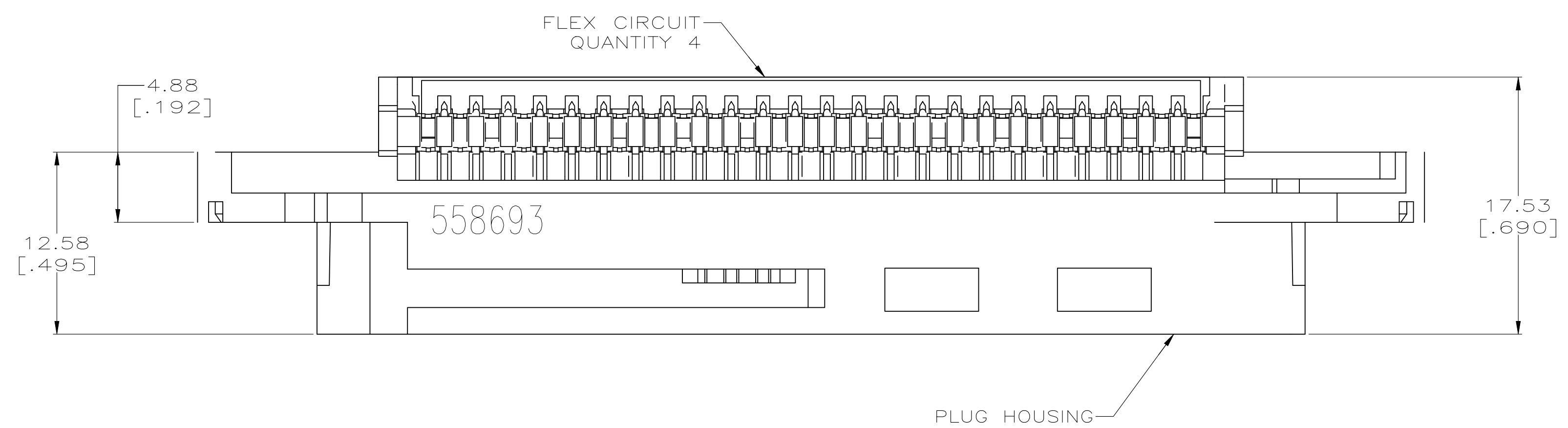


REVISIONS				
REV	DATE	DESCRIPTION	BY	APP'D
J	15NOV2022	REVISED PER ECN-22-184737	AK	SZ



- ⚠ MATERIAL:
 HOUSING - POLYPHENYLENE OXIDE MOLDING COMPOUND, SEE TABLE FOR COLOR.
 TERMINALS - PHOS BRONZE PLATED WITH EITHER .76μm [.000030] MIN GOLD OR GOLD FLASH OVER PALLADIUM NICKEL .76μm [.000030] MIN TOTAL, ON CONTACT MATING SURFACE. 1.27μm [.000050] MIN NICKEL UNDERPLATE OVER ENTIRE TERMINAL.
 FLEX CIRCUIT - COPPER LAMINATE POLYESTER FILM.
2. THE CONTACT SURFACES OF THE TERMINALS ARE COATED WITH LUBRICANT.
- ⚠ DIMENSIONS ARE MAXIMUM UNLESS OTHERWISE SPECIFIED.
4. WIRE SIZE: 24-26 AWG SOLID OR 24-7 STRAND COPPER CONDUCTORS. MAXIMUM INSULATION OF Ø1.14 [.045] IS ACCEPTABLE FOR MOST APPLICATIONS.
- ⚠ 558693-1 HAS BEEN SUPERSEDED BY 1-558693-1 (ONLY DIFFERENCE IS HOUSING COLOR).
- ⚠ SINK IS ACCEPTABLE IN AREA INDICATED.



CHAMP CATEGORY 5
WIRING PATTERN

RED	1-558693-1
BLACK	558693-1
COLOR	PART NUMBER

THIS DRAWING IS A CONTROLLED DOCUMENT.

DIMENSIONS: mm [INCHES]	TOLERANCES UNLESS OTHERWISE SPECIFIED:	DIN D. DRUMMOND 04 OCT 94	REVISED B. FOX 12 DEC 94
0. PLC ± .05	1. PLC ± .05	APPROVED M. MILLER 20 DEC 94	NAME
2. PLC ± .05	3. PLC ± .05	PRODUCT SPEC	APPLICATION SPEC
4. PLC ± .05	ANGLES ± .05	SIZE	CAGE CODE
MATERIAL	FINISH	WEIGHT	DRAWING NO
		0.000000	A1 00779
		C=558693	RESTRICTED TO
		CUSTOMER DRAWING	SCALE 4:1 SHEET 1 of 1 REV J

STE TE Connectivity

PLUG ASSEMBLY,
50 POSITION, A-SLOT, CHAMP SYSTEM 5