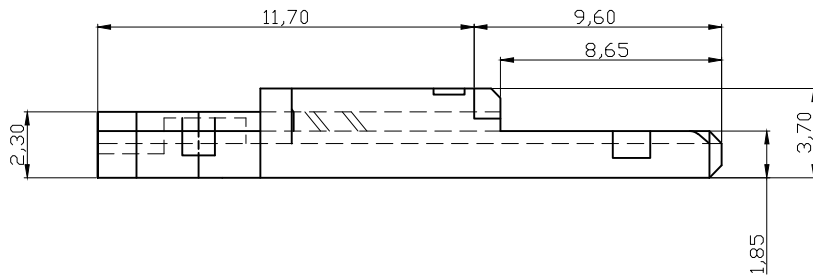
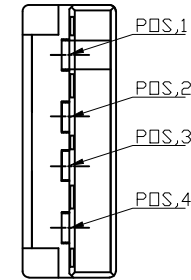
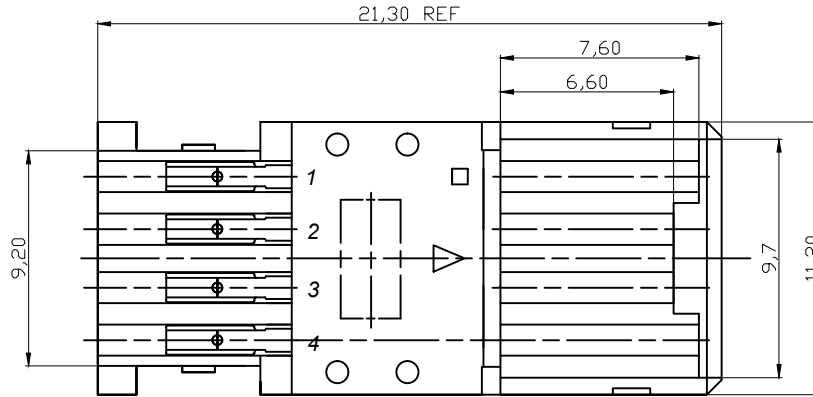
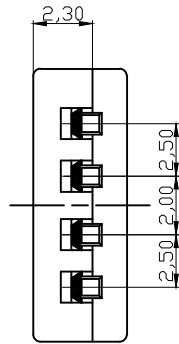


USB2.0 COMPLIANT



NOTE:


- 1. INSULATION: PBT WITH 30% GLASS FILLED, UL94V-0, WHITE
- 2. CONTACT: COPPER ALLOY
- 3. SUPPLEMENT:
 - 3.1 PN A-USBPA-BS and A-USBPA-TS are just for shell
 - 3.2 Below PN is for whole kit

A-USBPA-x

- Blank SELECTIVE GOLD 5u" on contact area
- 2 SELECTIVE GOLD 30u" on contact area
- N SELECTIVE GOLD FLASH on contact area

RoHS compliant

Unit:mm

Scale	Free					Date	Name	Customer-No.
TOLERANCE						Drawn	12.04.2019	Xavier
.XX	±0.10					Approved	12.04.2019	Winnie
.X	±0.20							
X.	±0.50							
XX.	±1							
DIM	TOL							
		Ⓢ	Drawn	12.04.2019	Xavier			
Angle	TOL	Id.	Modification	Date	Name			

ASSMANN WSW-No. A-USBPA-x	
Drawing-No. ASS 8371 CO	rev00
Replace	Sheet 1 / 5



1

2

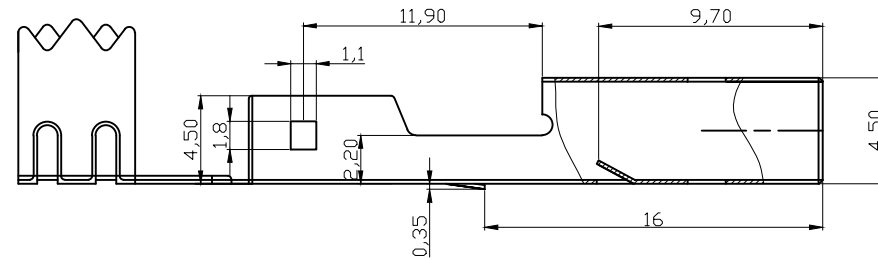
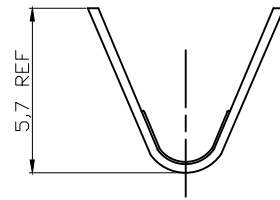
3

4

5

6

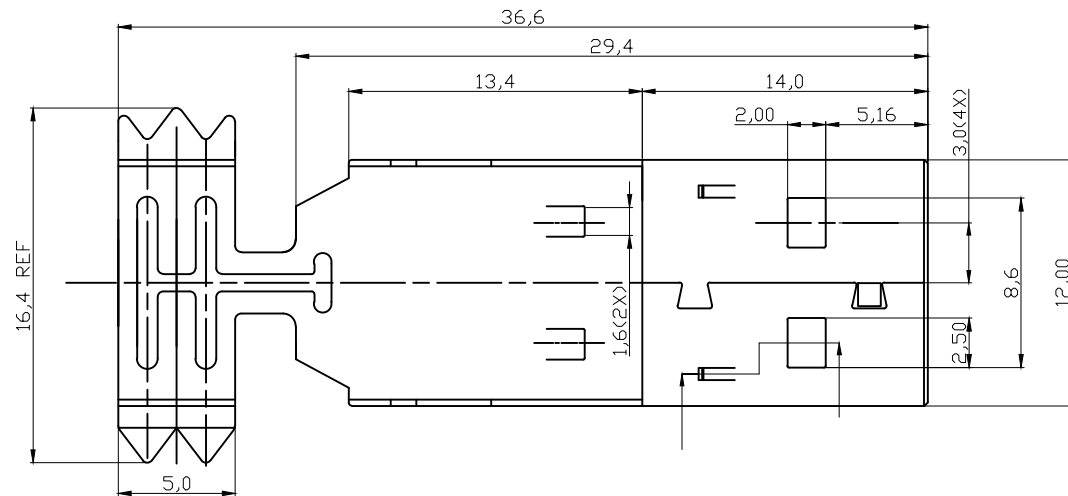
7

Bottom shell: A-USBPA-BS**SECTION A-A**

NOTE:

1. COLD ROLL STEEL. $t=0.35\text{mm}$
2. FINISHES: 3.0um-5.0um NICKEL OVER 5.0um Min.COPPER
3. APPLICATION CABLE SPEC:

AWG Signal wires Power wires	Jacket OD.	Cable length(max.)
28AWG x 1T.P. 28AWG x 2Cores	4.2mm	0.81m
28AWG x 1T.P. 26AWG x 2Cores	4.4mm	1.31m
28AWG x 1T.P. 24AWG x 2Cores	4.7mm	2.08m
28AWG x 1T.P. 22AWG x 2Cores	5.0mm	3.33m
28AWG x 1T.P. 20AWG x 2Cores	5.0mm	5.00m



RoHS compliant

Unit:mm

Scale	Free	Date	Name	Customer-No.
TOLERANCE		Drawn	12.04.2019	Xavier
.XX	±0.10	Approved	12.04.2019	Winnie
.X	±0.20	ASSMANN WSW-No. A-USBPA-x		
X.	±0.50			
XX.	±1	Drawing-No. ASS 8371 CO		rev00
DIM	TOL			Sheet 2 / 5
Angle	TOL			
①	Drawn	12.04.2019	Xavier	Replace
Id.	Modification	Date	Name	

1

2

3

4

5

6

7

1 2 3 4 5 6 7

A

B

C

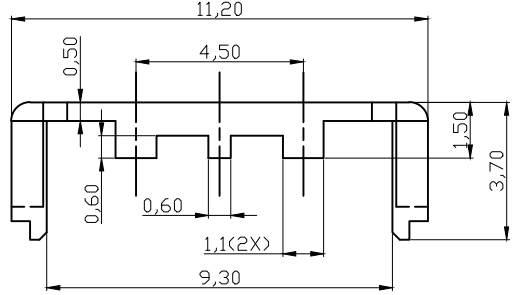
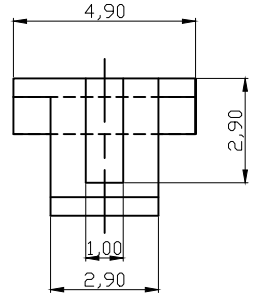
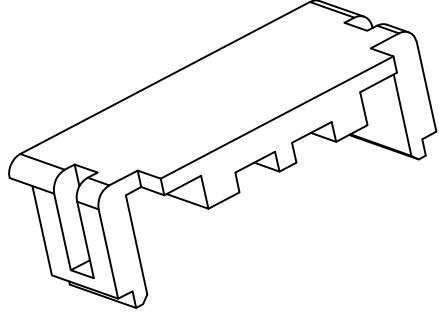
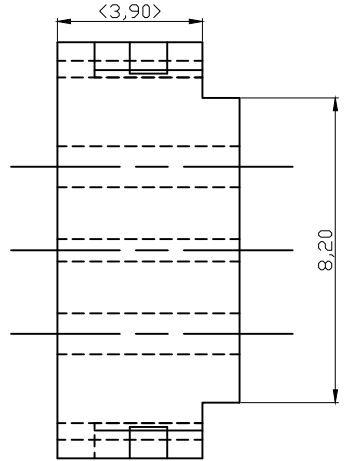
D

E

F


G

H



NOTE:
1. PBT WITH 30%GLASS FILLED,UL 90V-0 RATED

RoHS compliant
Unit:mm

Scale	Free					Date	Name	Customer-No.
TOLERANCE						Drawn	12.04.2019	Xavier
.XX	±0.10					Approved	12.04.2019	Winnie
.X	±0.20							
X.	±0.50							
XX.	±1							
DIM	TOL							
		Ⓢ	Drawn	12.04.2019	Xavier			
Angle	TOL	Id.	Modification	Date	Name	Replace		Sheet 3 / 5

1 2 3 4 5 6 7

1

2

3

4

5

6

7

A

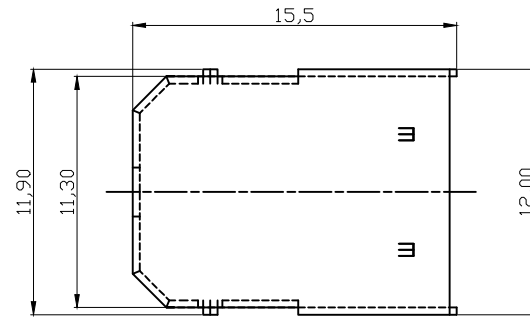
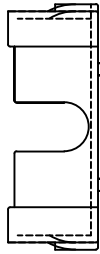
A

Top shell: A-USBPA-TS

B

B

VIEW A



NOTE:

1. COLD ROLL STEEL. t=0.35mm

2. FINISHES: 3.0um-5.0um NICKEL OVER 5.0um Min.COPPER

C

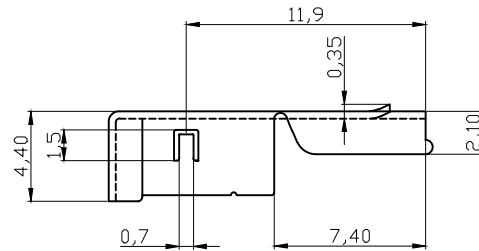
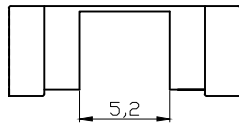
C

D

D

E

E



F

F

RoHS compliant

Unit:mm

Scale	Free					Date	Name	Customer-No.
TOLERANCE						Drawn	12.04.2019	Xavier
.XX	±0.10					Approved	12.04.2019	Winnie
.X	±0.20							ASSMANN WSW-No. A-USBPA-x
X.	±0.50							Drawing-No.
XX.	±1							ASS 8371 CO
DIM	TOL	Ⓢ	Drawn	12.04.2019	Xavier			rev00
Angle	TOL	Id.	Modification	Date	Name			Replace

G

G

H

H

1

2

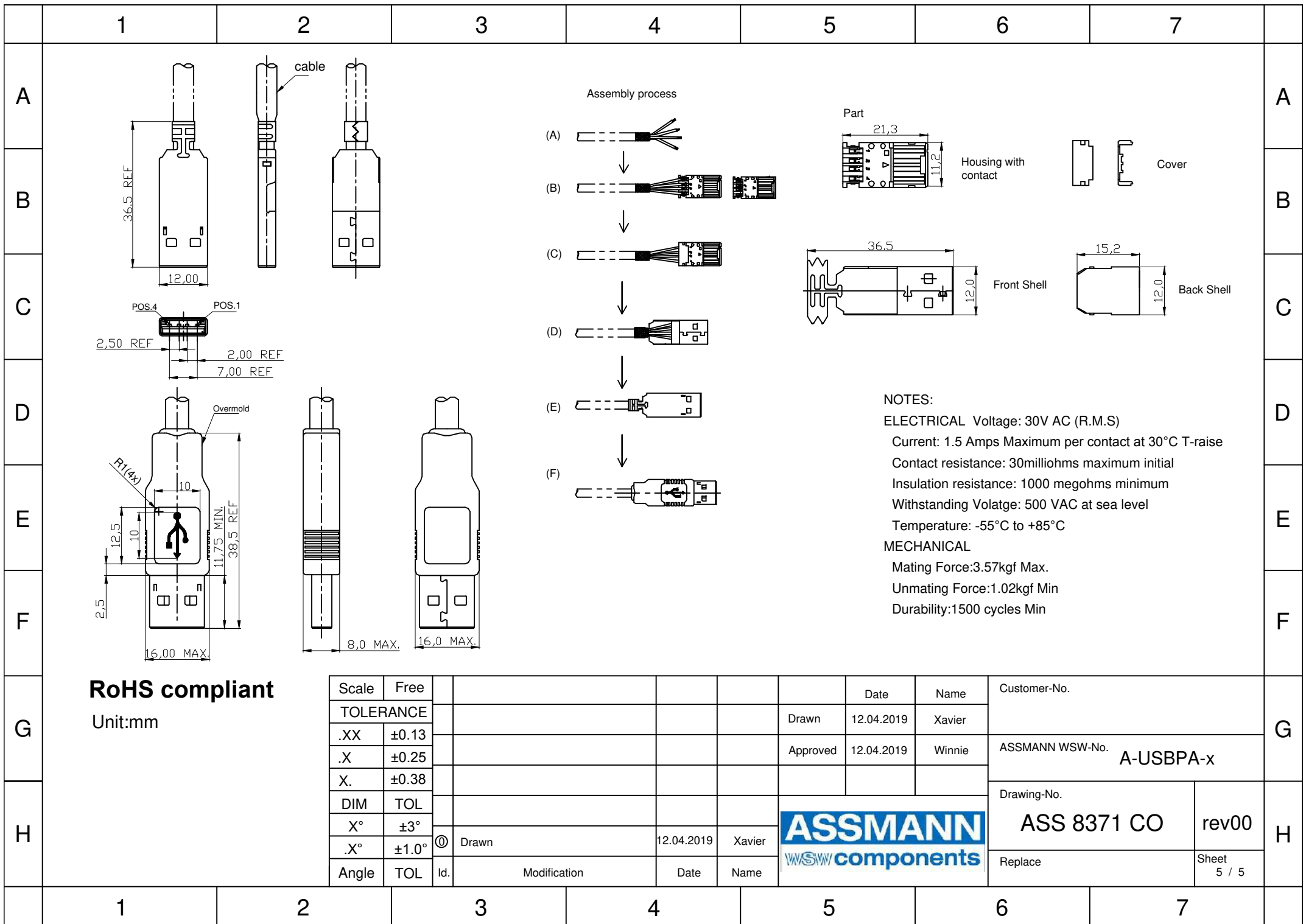
3

4

5

6

7



NOTES:
 ELECTRICAL Voltage: 30V AC (R.M.S)
 Current: 1.5 Amps Maximum per contact at 30°C T-rise
 Contact resistance: 30milliohms maximum initial
 Insulation resistance: 1000 megohms minimum
 Withstanding Volatge: 500 VAC at sea level
 Temperature: -55°C to +85°C
 MECHANICAL
 Mating Force:3.57kgf Max.
 Unmating Force:1.02kgf Min
 Durability:1500 cycles Min

RoHS compliant
 Unit:mm

Scale	Free					Date	Name	Customer-No.	
TOLERANCE					Drawn	12.04.2019	Xavier	ASSMANN WSW-No. A-USBPA-x	
.XX	±0.13				Approved	12.04.2019	Winnie		
.X	±0.25								
X.	±0.38							Drawing-No.	
DIM	TOL							ASS 8371 CO	rev00
X°	±3°							Replace	Sheet 5 / 5
.X°	±1.0°	ⓐ	Drawn	12.04.2019	Xavier				
Angle	TOL	Id.	Modification	Date	Name				