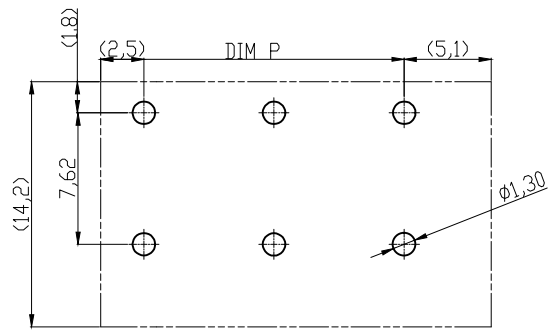


Material

- ① Terminal body(Contact pin):Brass
- ② Wire guard: Stainless steel
- ③ Surface of solder tail: Tin plated
- ④ Insulator(housing): Thermoplastic (UL94V-0) , GREEN(RAL6018/T)

Electrical cULus/VDE

Voltage rating: 300VAC/450VAC
 Current rating: 10A/10A
 Wire range:0.75-1.5mm²
 Solid wire(AWG): 14-24
 Stranded wire(AWG): 14-24
 Pull force:
 Screw:
 Wire strip length: 9-10mm
 Withstanding Voltage: 1.6KV/2.5KV
 Operating temperature: -40°C to +115°C
 Soldering temperature: 250°C±10°C/5 Sec
 Safety Approval:



RECOMMENDER PCB LAYOUT

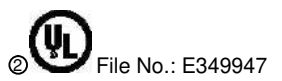
DIMENSION

L	Nx7.62
P	(N-1)x7.62

N=Number of poles

Poles	Tolerance	
	DIM L	DIM P
2p-6p	±0.20	±0.20
7p-12p	±0.25	±0.25
13p-24p	±0.40	±0.40

RoHS compliant
Unit: mm



Scale	Free					Date	Name	Customer-No.
TOLERANCE						Drawn	19.04.2010	Alex
X.	±0.50							
X.X	±0.30	③	Delete the Wrong dimension 37.51	09.01.2017	Winnie	Approved	09.01.2017	Winnie
X.XX	±0.10	②	Add the UL File No.	19.04.2016	Winnie			
DIM	TOL	①	Update	16.04.2013	Amy			
X.°	±1°	④	Drawn	19.04.2010	Alex			
Angle	TOL	Id.	Modification	Date	Name	Replace		Sheet

ASSMANN WSW-No.
A-TB762-HAxxH

Drawing-No.
ASS 4127 CO rev03