

DO NOT SCALE FROM THIS PRINT

DESIGNED & DIMENSIONED IN INCHES[MILLIMETERS]

PRFS1-J-C-EE-405-BD

SERIES
-S1: SSMA

GENDER
-J: JACK

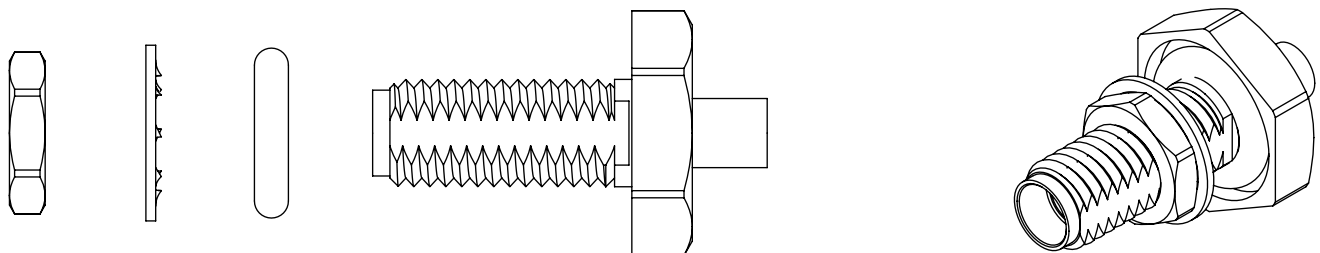
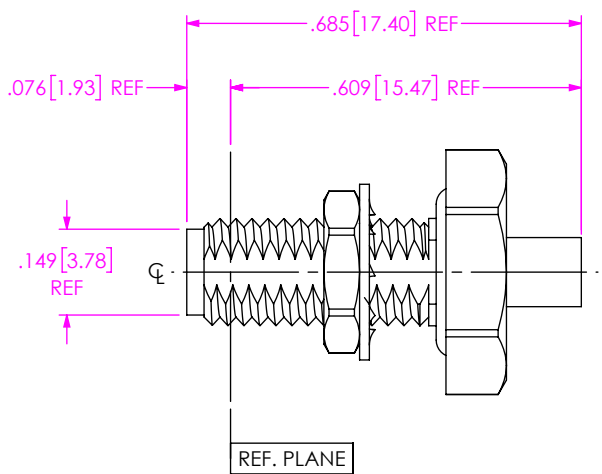
TYPE
-C: CABLE

FINISH
-EE: 50μ" EXTRA HEAVY GOLD CENTER CONTACT, 50μ" EXTRA HEAVY GOLD OUTER CONTACT

TERMINATION
-D: DIRECT SOLDER


ORIENTATION
-B: BULKHEAD

CABLE TYPE
-405: RG-405 SEMI-RIGID

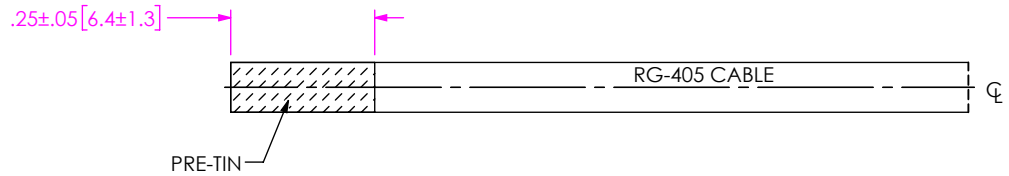


EXPLODED VIEW
NOT TO SCALE
(FOR CLARITY ONLY)

- NOTES:
- MATERIAL:
BODY & LOCK NUT: STAINLESS STEEL.
CONTACT: BERYLLIUM COPPER.
O-RING: SILICONE RUBBER.
INSULATOR: PTFE.
LOCKWASHER: BRONZE ALLOY.
 - FINISH:
COUPLING NUT: PASSIVATED.
BODY, CONTACT, LOCKWASHER & LOCK NUT: GOLD OVER NICKEL PLATE,
50 μIN MIN GOLD OVER 50 μIN MIN NICKEL.
 - PCI P/N: 3798.

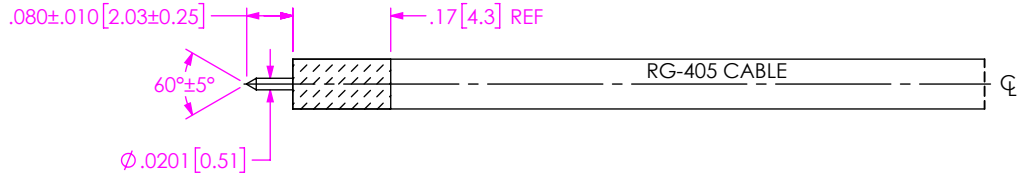
<p>UNLESS OTHERWISE SPECIFIED, DIMENSIONS ARE IN INCHES. TOLERANCES ARE: DECIMALS ANGLES .XX: ±.01 [0.3] .XXX: ±.005 [0.13] .XXXX: ±.0005 [0.013]</p>	<p>PROPRIETARY NOTE THIS DOCUMENT CONTAINS CONFIDENTIAL AND PROPRIETARY INFORMATION AND ALL DESIGN, MANUFACTURING, REPRODUCTION, USE, PATENT RIGHTS AND SALES RIGHTS ARE EXPRESSLY RESERVED BY SAMTEC, INC. THIS DOCUMENT SHALL NOT BE DISCLOSED, IN WHOLE OR PART, TO ANY UNAUTHORIZED PERSON OR ENTITY NOR REPRODUCED, TRANSFERRED OR INCORPORATED IN ANY OTHER PROJECT IN ANY MANNER WITHOUT THE EXPRESS WRITTEN CONSENT OF SAMTEC, INC.</p>	 <p>520 PARK EAST BLVD, NEW ALBANY, IN 47150 PHONE: 812-944-6733 FAX: 812-948-5047 e-Mail: info@SAMTEC.com code 55322</p>
<p>DO NOT SCALE DRAWING</p>	<p>SHEET SCALE: 3:1</p>	<p>DESCRIPTION: SSMA BULKHEAD JACK, DIRECT SOLDER FOR RG-405 CABLE</p>
<p>DWG. NO. PRFS1-J-C-EE-405-BD</p>		<p>BY: CANDY W 04/29/2019 SHEET 1 OF 2</p>

1. PRE-TIN CABLE CENTER CONDUCTOR OVER LENGTH INDICATED (OPTIONAL).



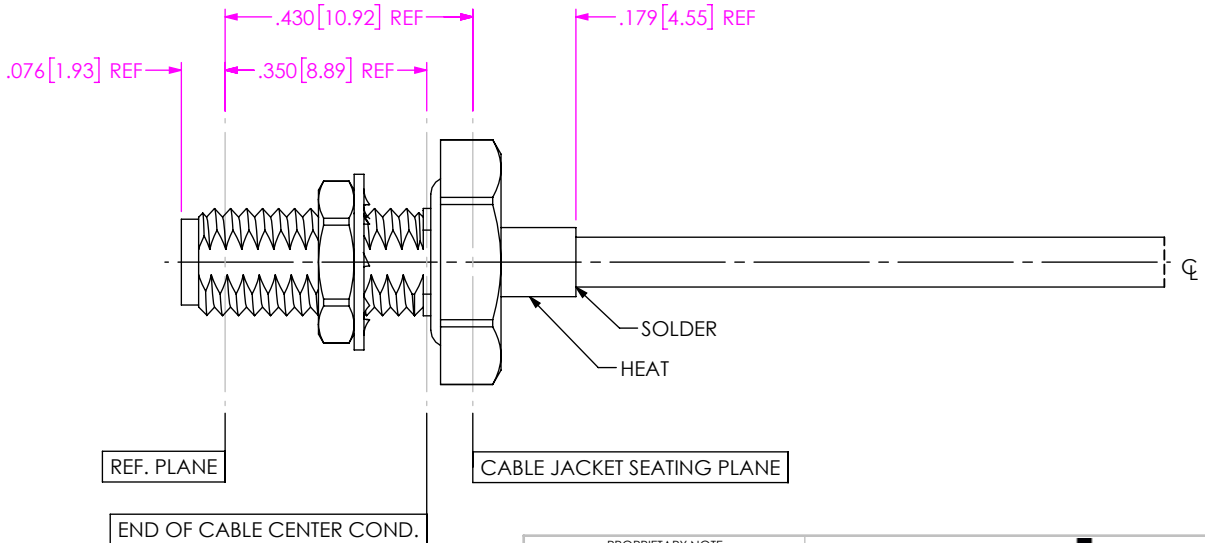
IN-PROCESS 1

2A. TRIM CABLE JACKET AND DIELECTRIC TO EXPOSE CENTER CONDUCTOR FOR LENGTH INDICATED.
 2B. POINT CABLE CENTER CONDUCTOR AS SHOWN.



IN-PROCESS 2

3A. INSERT CABLE INTO CONNECTOR BODY UNTIL FULLY SEATED.
 3B. APPLY HEAT TO REAR CONNECTOR BODY AND SOLDER CABLE JACKET TO BODY WHERE INDICATED.



IN-PROCESS 3

PROPRIETARY NOTE
 THIS DOCUMENT CONTAINS CONFIDENTIAL AND PROPRIETARY INFORMATION AND ALL DESIGN, MANUFACTURING, REPRODUCTION, USE, PATENT RIGHTS AND SALES RIGHTS ARE EXPRESSLY RESERVED BY SAMTEC, INC. THIS DOCUMENT SHALL NOT BE DISCLOSED, IN WHOLE OR PART, TO ANY UNAUTHORIZED PERSON OR ENTITY NOR REPRODUCED, TRANSFERRED OR INCORPORATED IN ANY OTHER PROJECT IN ANY MANNER WITHOUT THE EXPRESS WRITTEN CONSENT OF SAMTEC, INC.



520 PARK EAST BLVD, NEW ALBANY, IN 47150
 PHONE: 812-944-6733 FAX: 812-948-5047
 e-Mail info@SAMTEC.com code 55322

DO NOT SCALE DRAWING
 SHEET SCALE: 3:1

DESCRIPTION: SSMA BULKHEAD JACK, DIRECT SOLDER FOR RG-405 CABLE

DWG. NO. PRFS1-J-C-EE-405-BD

BY: CANDY W 04/29/2019 SHEET 2 OF 2