

MATERIALS AND FINISHES

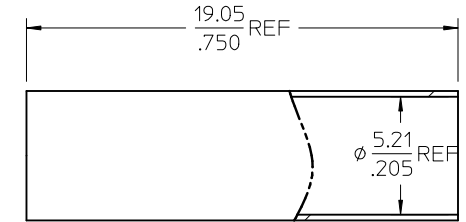
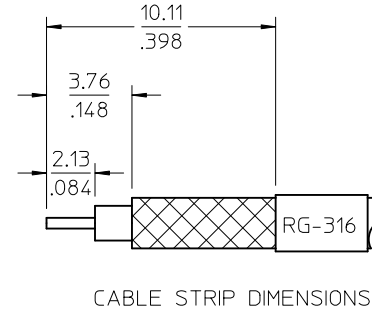
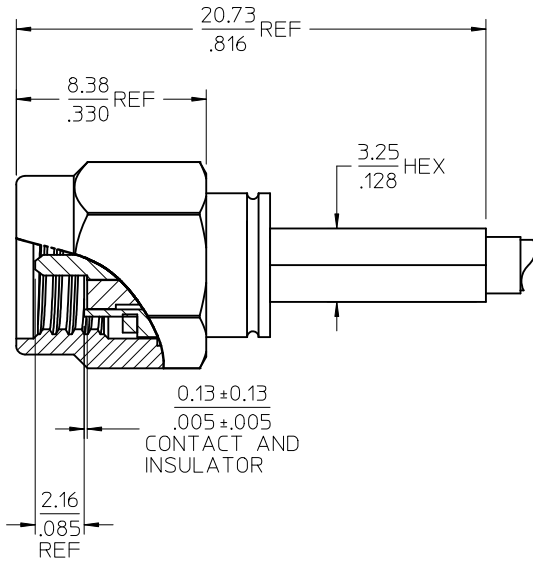
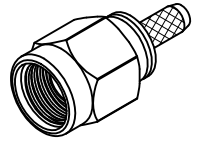
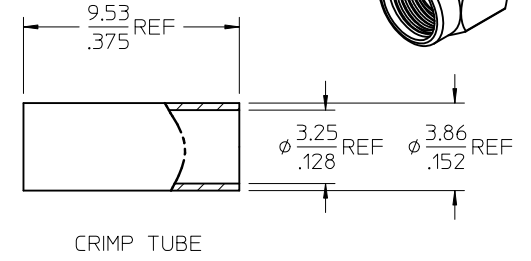
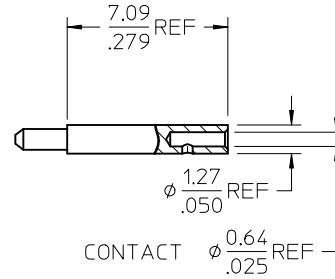
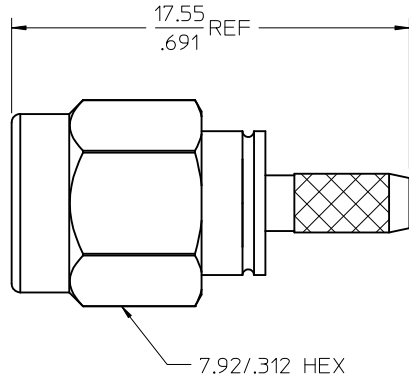
BODY, NUT STAINLESS STEEL
PLATED (SEE TABLE)

CENTER CONTACT
PLATED (SEE TABLE)

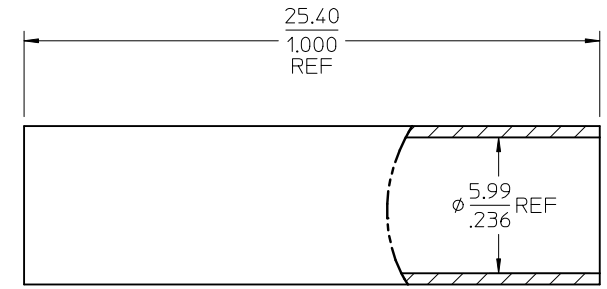
INSULATOR TEFLON

CRIMP TUBE BRASS
PLATED (SEE TABLE)

SHRINK TUBE
(SEE TABLE)



VERSAFIT SHRINK TUBE
(SEE TABLE)



ATUM SHRINK TUBE
(SEE TABLE)

AS CABLED
(NO SHRINK TUBE)

SEE SHEET TWO
FOR PART NUMBERS

| | | | | | | | | | | | |
|---|---|-------------------------------|--|-----|--------------------------|------|--------------|--------------|------------------------|-------|---|
| CHG: UPDATE STRIP SHOW INTERFACE ADD ATUM VIEW A6 | IEC NO: URF2012-0444 2012/02/02 DRWN: WIENER 2012/02/02 CHKD: SSS 2012/02/06 APPR: WIENER 2012/02/06 | QUALITY SYMBOLS ▽=0 ▽=0 | GENERAL TOLERANCES (UNLESS SPECIFIED) | | DIMENSION STYLE MM/IN | | SCALE | DESIGN UNITS | THIRD ANGLE PROJECTION | | |
| | | | 4 PLACES | ± | --- | ± | --- | DRAWN BY | DATE | TITLE | SMA PLUG, STR, 50 OHMS RG-316 CABLE GROUP EWR-2731 SMA-PC MOLEX INCORPORATED |
| | | | 3 PLACES | ± | --- | ± | --- | CHECKED BY | DATE | | |
| | | | 2 PLACES | ± | --- | ± | --- | DHG | 1997/11/17 | | |
| 1 PLACE | ± | --- | ± | --- | APPROVED BY | DATE | | | | | |
| | | | ANGULAR ± 2 ° | | MATERIAL NO. | | DOCUMENT NO. | | SHEET NO. | | |
| DRAFT WHERE APPLICABLE MUST REMAIN WITHIN DIMENSIONS | | | SEE SHEET 2 | | SD-73251-015 | | 1 OF 2 | | | | |
| THIS DRAWING CONTAINS INFORMATION THAT IS PROPRIETARY TO MOLEX INCORPORATED AND SHOULD NOT BE USED WITHOUT WRITTEN PERMISSION | | | | | | | | | | | |

13 12 11 10 9 8 7 6 5 4 3 2 1

| | |
|--------------------------|---------------------|
| PS-89675-3460 | ELEC./MECH. PERFORM |
| MIL-STD-348A, FIG. 310.1 | INTERFACE |
| SPECIFICATION | DESCRIPTION |

| | | | | | |
|-------------|--------------------------|------------------------------|-----------------------------------|-------------|------------------|
| 73251-0155 | GOLD (8 MICROINCHES MIN) | GOLD (8 MICROINCH MIN) | BRASS / GOLD (8 MICROINCHES MIN) | NONE | BULK 100 PER BAG |
| 73251-0154 | PASSIVATED | NICKEL (100 MICROINCHES MIN) | BeCu / GOLD (50 MICROINCHES MIN) | VERSAFIT | TRAY (20 CAVITY) |
| 73251-0153 | GOLD (5 MICROINCHES MIN) | GOLD (FLASH) | BRASS / GOLD (10 MICROINCHES MIN) | NONE | BULK 100 PER BAG |
| 73251-0152 | PASSIVATED | NICKEL (100 MICROINCHES MIN) | BeCu / GOLD (50 MICROINCHES MIN) | ATUM | ONE PER BAG |
| 73251-0151 | PASSIVATED | NICKEL (100 MICROINCHES MIN) | BeCu / GOLD (50 MICROINCHES MIN) | VERSAFIT | ONE PER BAG |
| 73251-0150 | GOLD (5 MICROINCHES MIN) | GOLD (FLASH) | BRASS / GOLD (10 MICROINCHES MIN) | VERSAFIT | ONE PER BAG |
| PART NUMBER | PLATING BODY/COUP'G NUT | PLATING CRIMP TUBE | CONTACT MATERIAL / PLATING | SHRINK TUBE | PACKAGING |

| | | | | | | | | | | | | | | | | | | | | |
|--|-----------------------------|--|-------------------------------------|----------------------------|------|----------|--------|---------|----------|--------|---------|----------|--------|---------|---------|--------|---------|--|--|---|
| SEE SHEET 1 EC NO: URF2012-0444 DRWN: JWIENER 2012/02/02 CHKD: SSS 2012/02/02 APPR: JWIENER 2012/02/06 A6 | QUALITY SYMBOLS =0 =0 | GENERAL TOLERANCES (UNLESS SPECIFIED) <table border="1"> <tr> <td></td> <td>mm</td> <td>INCH</td> </tr> <tr> <td>4 PLACES</td> <td>± .005</td> <td>± .0004</td> </tr> <tr> <td>3 PLACES</td> <td>± .005</td> <td>± .0004</td> </tr> <tr> <td>2 PLACES</td> <td>± .005</td> <td>± .0004</td> </tr> <tr> <td>1 PLACE</td> <td>± .005</td> <td>± .0004</td> </tr> </table> | | mm | INCH | 4 PLACES | ± .005 | ± .0004 | 3 PLACES | ± .005 | ± .0004 | 2 PLACES | ± .005 | ± .0004 | 1 PLACE | ± .005 | ± .0004 | DIMENSION STYLE MM/IN DRAWN BY: NB J DATE: 1997/11/17 CHECKED BY: DHG DATE: 1997/11/17 APPROVED BY: GMH DATE: 1997/11/17 | SCALE DESIGN UNITS METRIC THIRD ANGLE PROJECTION | TITLE SMA PLUG, STR, 50 OHMS RG-316 CABLE GROUP EWR-2731 SMA-PC |
| | | | mm | INCH | | | | | | | | | | | | | | | | |
| | | 4 PLACES | ± .005 | ± .0004 | | | | | | | | | | | | | | | | |
| | | 3 PLACES | ± .005 | ± .0004 | | | | | | | | | | | | | | | | |
| 2 PLACES | ± .005 | ± .0004 | | | | | | | | | | | | | | | | | | |
| 1 PLACE | ± .005 | ± .0004 | | | | | | | | | | | | | | | | | | |
| DRAFT WHERE APPLICABLE MUST REMAIN WITHIN DIMENSIONS | | MATERIAL NO. SEE TABLE | DOCUMENT NO. SD-73251-015 | SHEET NO. 2 OF 2 | | | | | | | | | | | | | | | | |
| THIS DRAWING CONTAINS INFORMATION THAT IS PROPRIETARY TO MOLEX INCORPORATED AND SHOULD NOT BE USED WITHOUT WRITTEN PERMISSION | | | | | | | | | | | | | | | | | | | | |
| SIZE | | | | | | | | | | | | | | | | | | | | |