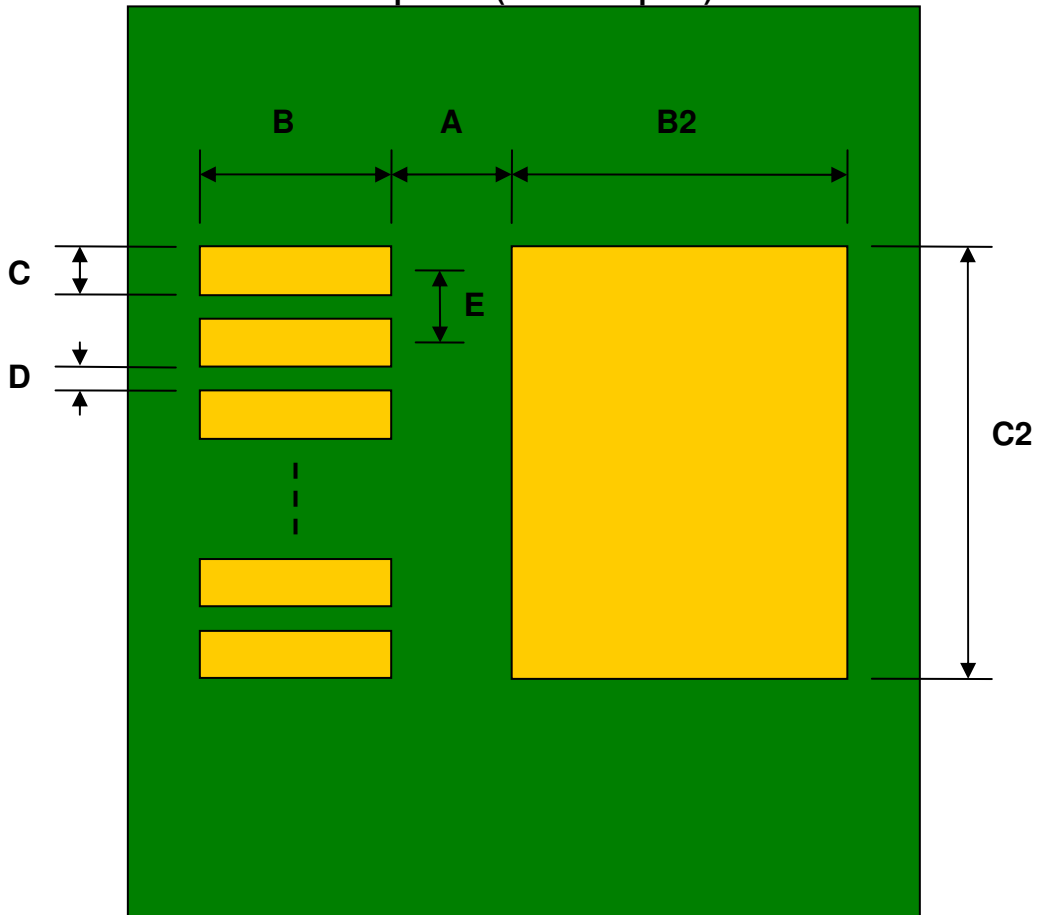


## TO-263-5/TO-263-5-THIN to DIP-10 SMT Adapter (67 mils pitch, 400 x 390 mils body)

REF.	DIMENSIONS					
	mm			inches		
	MIN.	TYP.	MAX.	MIN.	TYP.	MAX.
A		3.20				
B		4.00				
C		1.20				
B2		10.00				
C2		11.00				
D		0.50				
E		1.70				
F					0.600	
G					0.100	
H					0.025	

Top View (SMT Footprint)



(Representative drawing only - not to scale)

### Bottom View (DIP Pins)



(Representative drawing only - not to scale)

### Side View (DIP Pins)



(Representative drawing only - not to scale)