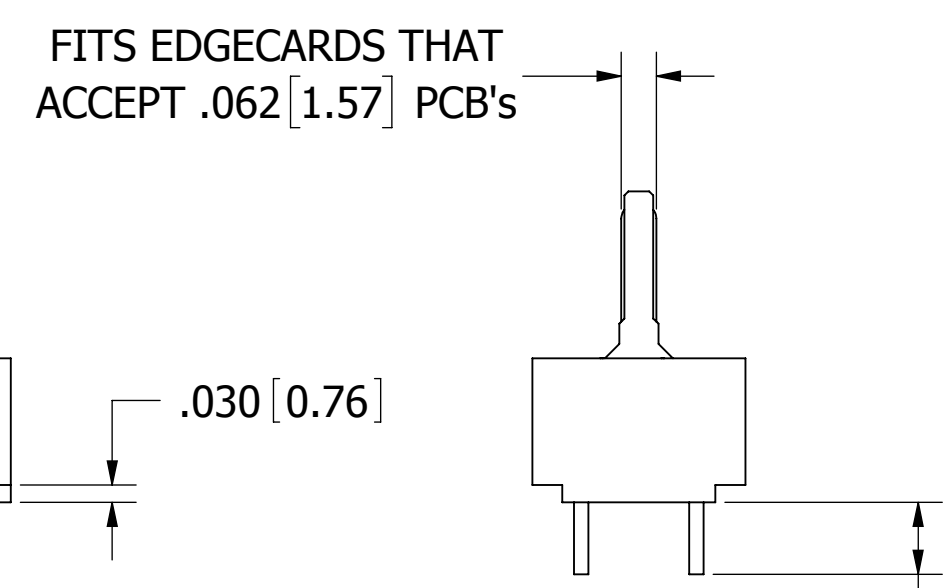
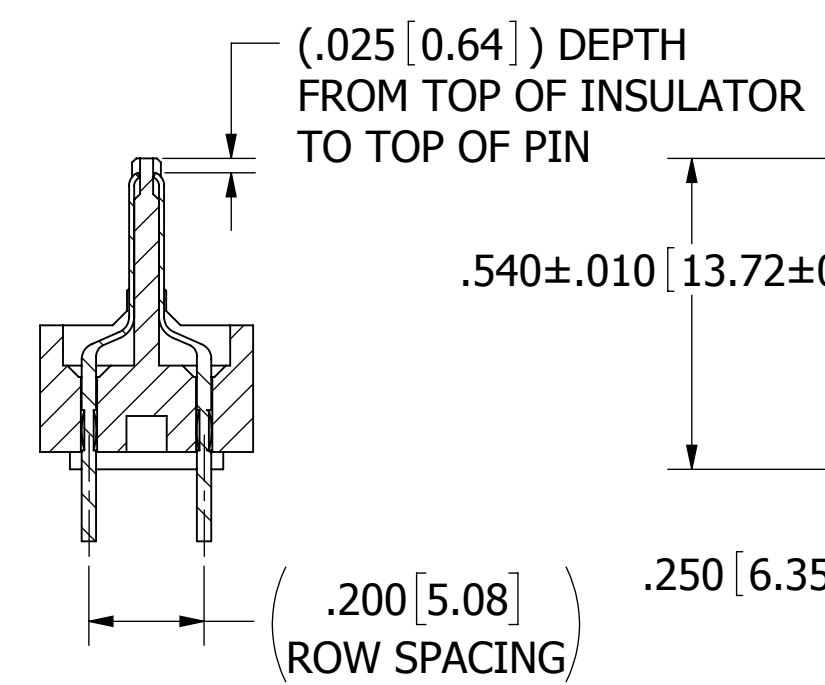
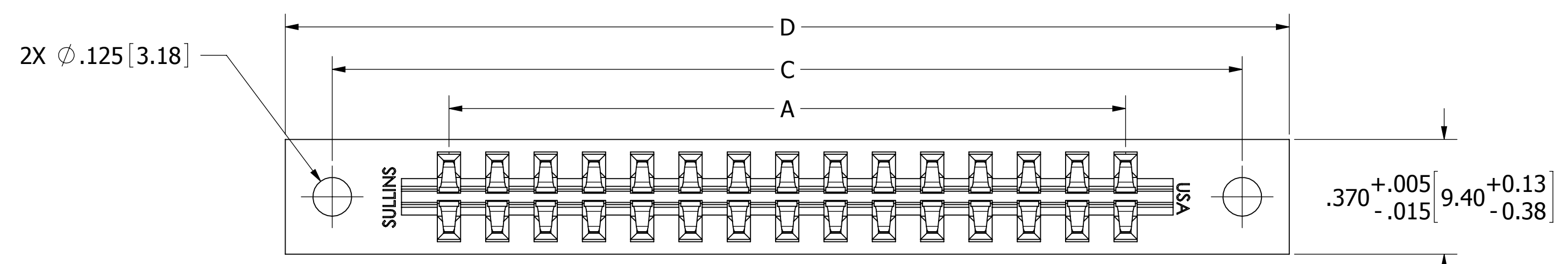


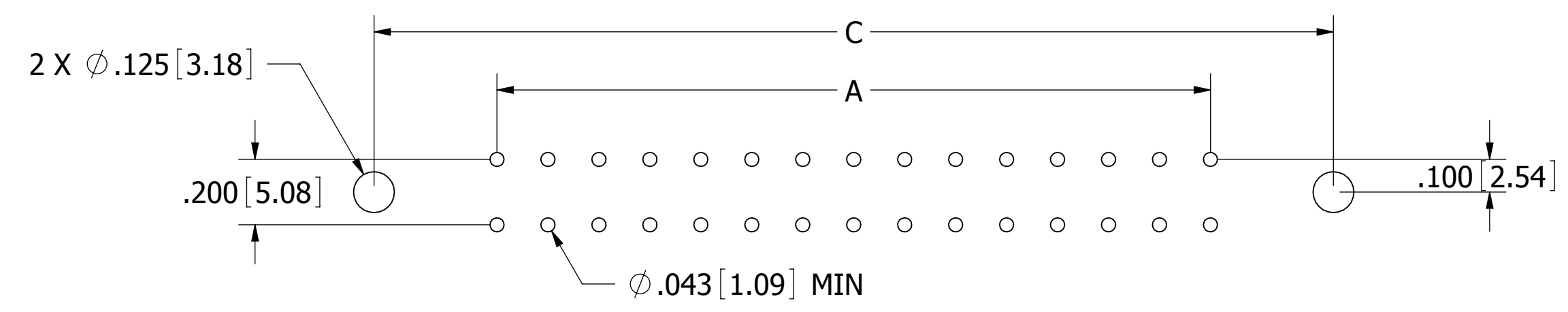
REVISIONS				
REV.	ECO. NO	DESCRIPTION	DATE	BY
K	3369	UPDATE MIN PIN HOLE SIZE TO .043 FOR ALL TERMINATIONS	1/19/2016	MG
L	3577	ADD 02 & 03 POS TO DIM TABLE	12/7/2016	MG
M	3652	REMOVE 'A' MATERIAL, ADD 'Q' MATERIAL, UPDATE 'R' MATERIAL OPERATING TEMPERATURE, REMOVE 'Y' & 'S' PLATING	4/6/2017	EP



MW = .125±.025 [3.18±0.64]  
 MS = .190±.025 [4.83±0.64]  
 MM = .560±.025 [14.22±0.64]

**SECTION A-A**

**--M\_M\_D**



**RECOMMENDED PCB LAYOUT**

**CUSTOMER COPY**

- NOTES:**
1. INSULATOR MATERIAL: SEE PART NUMBER CODING
  2. CONTACT MATERIAL: SEE PART NUMBER CODING
  3. PLATING: SEE PART NUMBER CODING
  4. OPERATING TEMPERATURE: SEE PART NUMBER CODING
  5. PROCESSING TEMP: SEE PART NUMBER CODING
  6. UL FLAMMABILITY RATING: 94V-0
  7. OPERATING VOLTAGE: 950 VAC
  8. CURRENT RATING: 3 AMP
  9. CONTACT RESISTANCE: 30 MILLI OHMS MAX
  10. INSULATION RESISTANCE: 5000 MEGA OHMS
  11. CONNECTOR IDENTIFICATION: PART SHALL BE MARKED WITH A PART NUMBER AND LOT CODE



UNLESS OTHERWISE SPECIFIED:  
 DIMENSIONS ARE IN INCHES [MM]

TOLERANCES:  
 ANGULAR: ± 1°

DECIMALS  
 .XX = ± .02 [.5]  
 .XXX = ± .005 [.13]  
 .XXXX = ± .0005 [.013]

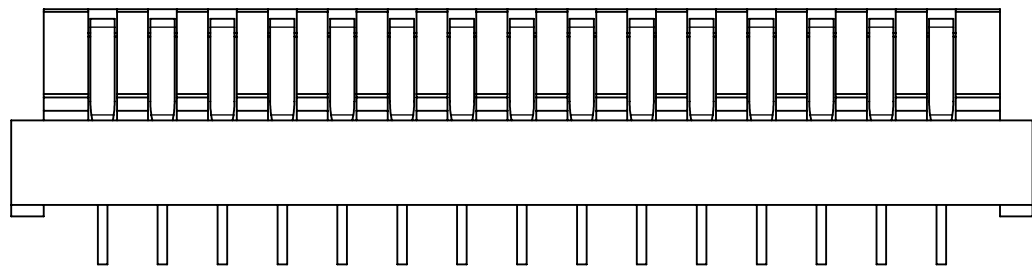
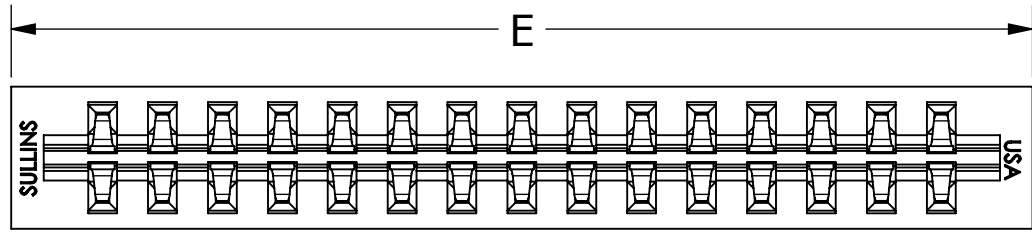
DRAWN	DATE	NAME
	03/14/08	MNH
THE INFORMATION HEREIN CONTAINS PROPRIETARY INFORMATION OF SULLINS ELECTRONICS AND IS NOT TO BE REPRODUCED, USED OR DISCLOSED TO OTHERS FOR ANY PURPOSE EXCEPT AS SPECIFICALLY AUTHORIZED IN WRITING BY AN OFFICER OF SULLINS ELECTRONICS.		
TITLE MALE, EDGE CARD, .156 CC		
PART NUMBER _M_M(MW,MS,MM)_		
SIZE C	CAGE CODE 54453	DWG. NO. C11075
SCALE: 3:1	SHEET 1 OF 3	

TITLE MALE, EDGE CARD, .156 CC		
PART NUMBER _M_M(MW,MS,MM)_		
SIZE C	CAGE CODE 54453	DWG. NO. C11075
SCALE: 3:1	SHEET 1 OF 3	

8 7 6 5 4 3 2 1

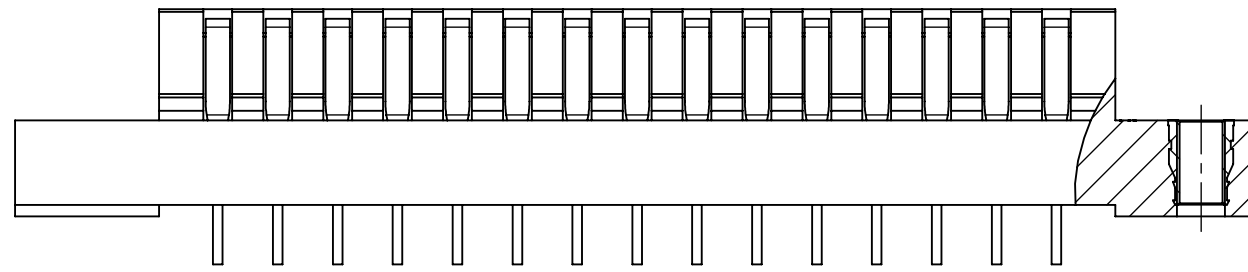
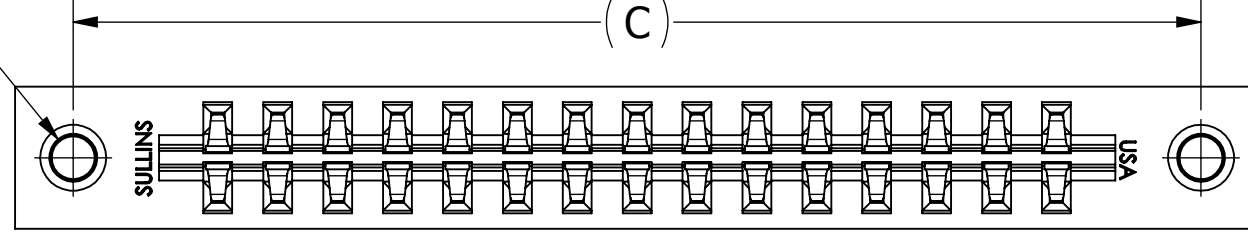
F E D C B A

F E D C B A

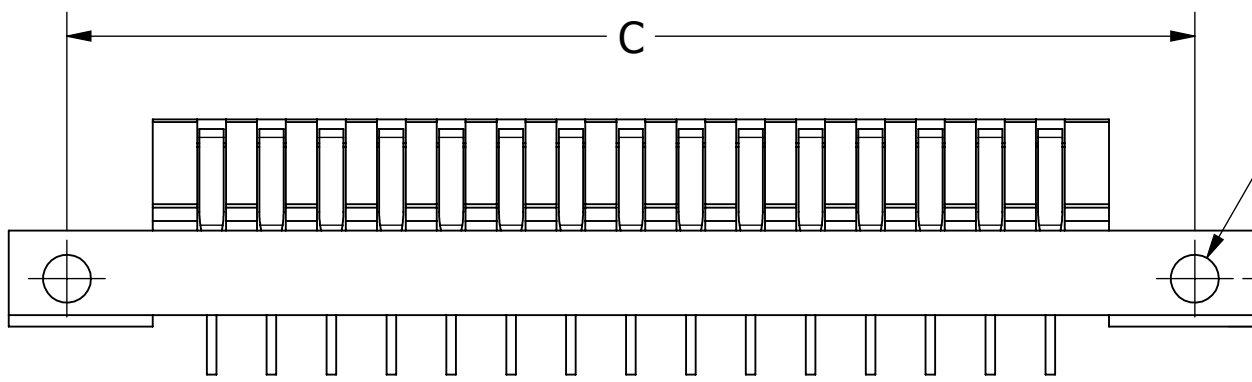
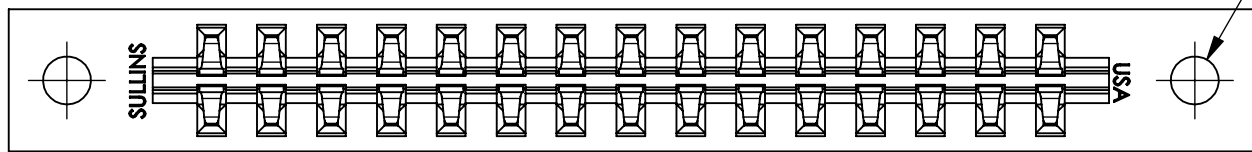


**\_\_M\_M\_N**

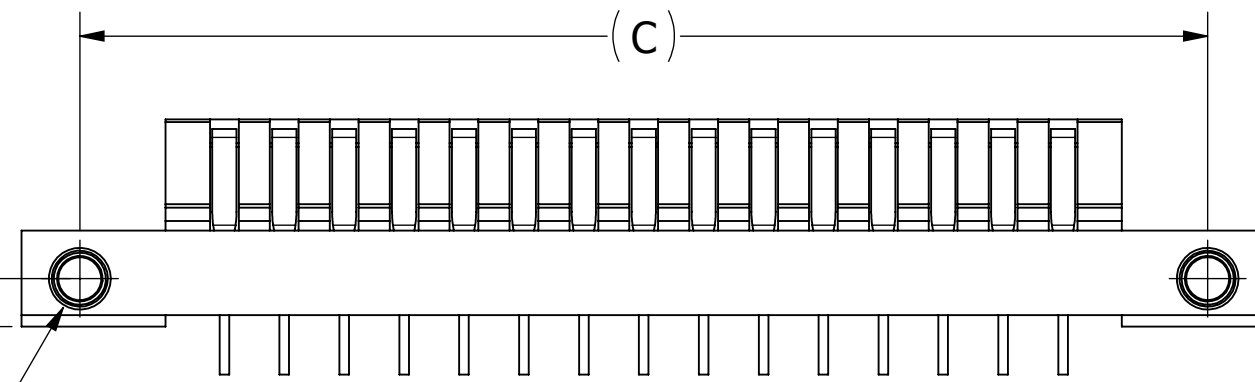
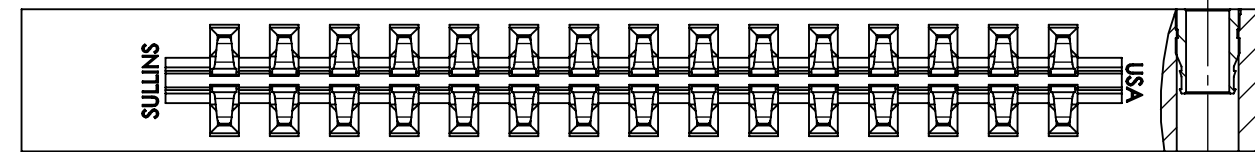
2X #4-40  
THREADED  
INSERTS



**\_\_M\_M\_T**



**\_\_M\_M\_Z**



2X #4-40  
THREADED  
INSERTS

**\_\_M\_M\_V**

**CUSTOMER COPY**



UNLESS OTHERWISE SPECIFIED:  
DIMENSIONS ARE IN INCHES [MM]

TOLERANCES:  
ANGULAR: ± 1°

DECIMALS  
.XX = ± .02 [.5]  
.XXX = ± .005 [.13]  
.XXXX = ± .0005 [.013]

DRAWN DATE NAME  
03/14/08 MNH

THE INFORMATION HEREIN CONTAINS  
PROPRIETARY INFORMATION OF  
SULLINS ELECTRONICS AND IS NOT  
TO BE REPRODUCED, USED OR  
DISCLOSED TO OTHERS FOR ANY  
PURPOSE EXCEPT AS SPECIFICALLY  
AUTHORIZED IN WRITING BY AN  
OFFICER OF SULLINS ELECTRONICS.

		TITLE MALE, EDGE CARD, .156 CC	
		PART NUMBER __M_M(MW,MS,MM)_	
SIZE C	CAGE CODE 54453	DWG. NO. C11075	REV M
SCALE: 2:1		SHEET 2 OF 3	

