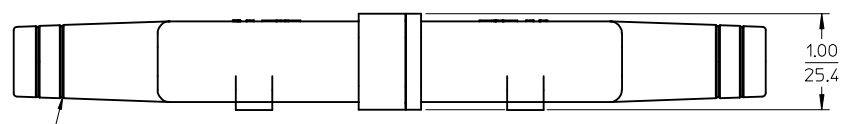
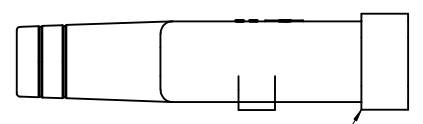


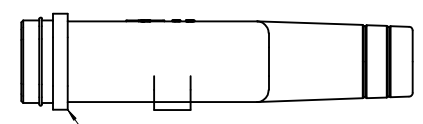
ASSEMBLED VIEWS



4X GROOVE PROVIDED AS CUT OFF GUIDE FOR USER WHEN USING THICK INSULATION TYPE CABLE.



194250002 FEMALE BOOT



194250001 MALE BOOT

NOTES:

1. MATERIAL: THERMOPLASTIC ELASTOMER. COLOR: BLACK. UV RESISTANCE: UL "F1".
2. PARTS ARE PACKAGED 15 EACH PER CARTON.

EC NO: ETC2004-0130 DRWN: DMYRICK 2004/01/21 CHKD: JPAWLICK 2004/01/21 APPR: RDEROSS 2004/01/21	QUALITY SYMBOLS	GENERAL TOLERANCES (UNLESS SPECIFIED)		SCALE 1:1	DESIGN UNITS INCH	THIRD ANGLE PROJECTION	REVISE ON CAD ONLY
	▼ -0 ∇ -0		mm	INCH	DIMENSION STYLE IN/MM		TITLE WEATHERTIGHT MALE/FEMALE BOOT ASSY, 16-12 AWG, ROMEX CABLE, SC
		4 PLACES	± .005	± .005	DRAWN BY DMYRICK	DATE 04/01/06	MOLEX INCORPORATED MATERIAL NO. SEE DRAWING DOCUMENT NO. SD-19425-001
		3 PLACES	± .005	± .005	CHECKED BY JPAWLICK	DATE 04/01/06	
2 PLACES	± .005	± .025	APPROVED BY RDEROSS		DATE 04/01/06	THIS DRAWING CONTAINS INFORMATION THAT IS PROPRIETARY TO MOLEX INCORPORATED AND SHOULD NOT BE USED WITHOUT WRITTEN PERMISSION	
1 PLACE	± 0.64	± .005	DRAFT WHERE APPLICABLE MUST REMAIN WITHIN DIMENSIONS				