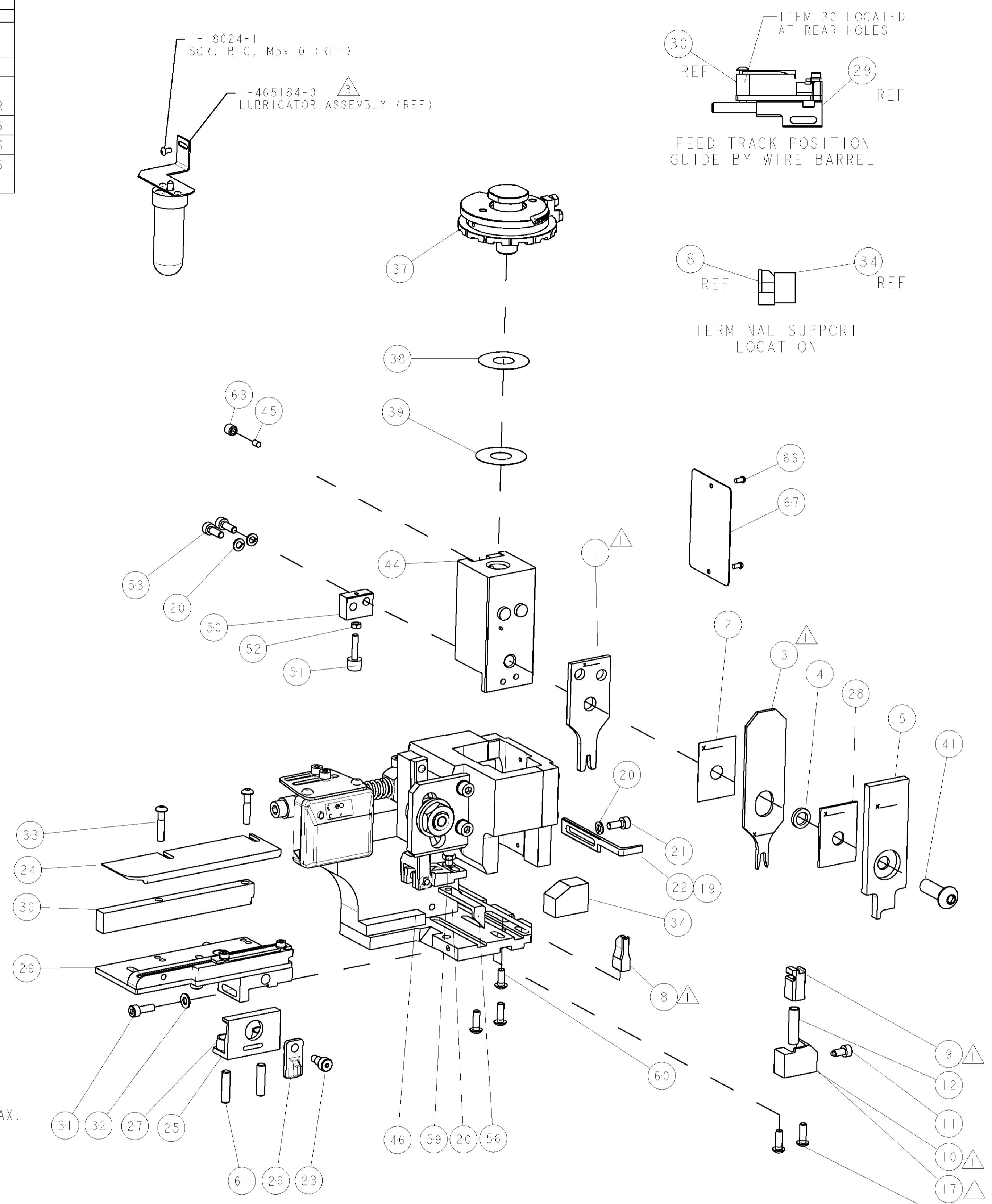
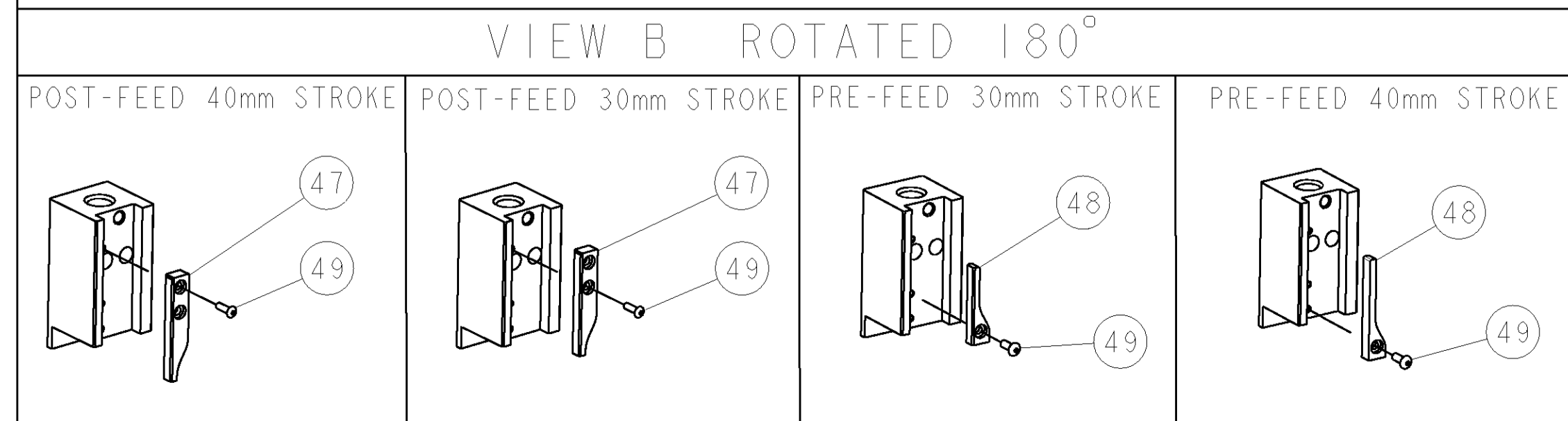


PART NUMBER	REV	TERMINATOR	FEED TYPE	DESCRIPTION
1528644-1	A	LEADMAKER	MECH POST FEED	CUTS CARRIER
1528644-2	A	BENCH	MECH PRE FEED	CUTS CARRIER
1528644-6	A	LEADMAKER	MECH POST FEED	CONTINUOUS CARRIER
7-1528644-1	A	LEADMAKER	MECH POST FEED	-1 AND SPARE PARTS
7-1528644-2	A	BENCH	MECH PRE FEED	-2 AND SPARE PARTS
7-1528644-6	A	LEADMAKER	MECH POST FEED	-6 AND SPARE PARTS
7-1528644-7	A	-	-	SPARE PARTS KIT

CRIMP DATA LEAR/GROTE & HARTMANN TERMINAL LEAR CRIMP SPEC			
TERMINAL NAME: AFK FEMALE TERMINAL 2.8 X 0.8			
CRIMP	SIZE	TYPE	RANGE
WIRE	2.54 [1.00 IN]	F	1.50mm ² -2.50mm ²
INSUL	3.68 [1.45 IN]	OV	1.90-2.90 [1.075-1.14 IN]
WIRE STRIP LENGTH 5.00 [1.97 IN]		APPL INSTRUCTIONS 408-8322 & 408-8490	
TERMINAL APPL SPEC	LEAR CRIMP DATA SHEETS 26657 & 26705	FEED 11.68 [4.60 IN]	
TERMINALS APPLIED			
TYCO PN	MANUF'S PN	TYCO PN	MANUF'S PN
1949035-1	26705.201.185	1949034-1	26657.330.185
1949035-2	26705.201.702	1949034-2	26657.201.142
-	-	1949034-3	26657.201.702
WIRE SIZE	CRIMP HEIGHT	REF SETTING	
2.50mm ²	1.70 ±0.05 [1.067 ±0.002 IN]	C3	
2.25mm ²	1.60 ±0.05 [1.063 ±0.002 IN]	D0	
1.50mm ²	1.45 ±0.05 [1.057 ±0.002 IN]	E0	

- △ RECOMMENDED SPARE PARTS.
- 2. GREASE RAM, CAM, CAM FOLLOWER AND FEED ROD LIGHTLY.
- △ CERTAIN TERMINALS REQUIRE LUBRICATION. REFER TO THE APPLICATOR INSTRUCTION SHEET FOR MORE INFORMATION.
- 4. LUBRICATE DAILY PER THE APPLICATOR INSTRUCTION SHEET SUPPLIED WITH THE APPLICATOR.
- △ TERMINAL APPLIES FLY TYPE INSULATION. FOR DOUBLE WIRE APPLICATIONS, INSULATION RANGE = 2X 2.20 [2X .087 IN] MAX.
- △ FOR SINGLE / DOUBLE WIRE COMBINATIONS.
- △ NOT FOR SINGLE WIRE.
- △ CRIMP DATA SUPPLIED BY TERMINAL MANUFACTURER.



* WARNING
ON INSTALLATION, SET WIRE DISC TO LARGEST WIRE SIZE SETTING. USE OF SETTINGS BELOW MIN. REQUIRED CRIMP HEIGHT SETTING WILL CAUSE DAMAGE TO CRIMP TOOLING.

-77	-76	-72	-71	-6	-2	-1	PART NO	DESCRIPTION	ITEM NO
-	-	-	-	-	-	-	-	-	84
-	-	-	-	-	-	-	-	-	83
-	-	-	-	-	-	-	-	-	82
-	-	-	-	-	-	-	-	-	81
-	-	-	-	-	-	-	-	-	80
-	-	-	-	-	-	-	-	-	79
-	-	-	-	-	-	-	-	-	78
-	-	-	-	-	-	-	-	-	77
-	-	-	-	-	-	-	-	-	76
-	-	-	-	-	-	-	-	-	75
-	-	-	-	-	-	-	-	-	74

SET UP GAGE 458637-3		LOC	DIST	REVISONS					
A	66			P	LTR	DESCRIPTION	DATE	OWN	APPR
				A		SEE ECO-06-016516	11JUL2006	DP	MC
				A1		SEE ECR-07-005916	14MAR2007	DP	MC

-	-	-	-	-	-	-	-	-	73
-	-	-	-	-	-	-	-	-	72
-	-	-	-	-	-	-	-	-	71
-	-	-	-	-	-	-	-	-	70
-	-	-	-	-	-	-	-	-	69
-	-	-	-	-	-	-	-	-	68
-	-	-	-	-	-	-	-	-	67
-	-	-	-	-	-	-	-	-	66
-	-	-	-	-	-	-	-	-	65
-	-	-	-	-	-	-	-	-	64
-	-	-	-	-	-	-	-	-	63
-	-	-	-	-	-	-	-	-	62
-	-	-	-	-	-	-	-	-	61
-	-	-	-	-	-	-	-	-	60
-	-	-	-	-	-	-	-	-	59
-	-	-	-	-	-	-	-	-	58
-	-	-	-	-	-	-	-	-	57
-	-	-	-	-	-	-	-	-	56
-	-	-	-	-	-	-	-	-	55
-	-	-	-	-	-	-	-	-	54
-	-	-	-	-	-	-	-	-	53
-	-	-	-	-	-	-	-	-	52
-	-	-	-	-	-	-	-	-	51
-	-	-	-	-	-	-	-	-	50
-	-	-	-	-	-	-	-	-	49
-	-	-	-	-	-	-	-	-	48
-	-	-	-	-	-	-	-	-	47
-	-	-	-	-	-	-	-	-	46
-	-	-	-	-	-	-	-	-	45
-	-	-	-	-	-	-	-	-	44
-	-	-	-	-	-	-	-	-	43
-	-	-	-	-	-	-	-	-	42
-	-	-	-	-	-	-	-	-	41
-	-	-	-	-	-	-	-	-	40
-	-	-	-	-	-	-	-	-	39
-	-	-	-	-	-	-	-	-	38
-	-	-	-	-	-	-	-	-	37
-	-	-	-	-	-	-	-	-	36
-	-	-	-	-	-	-	-	-	35
-	-	-	-	-	-	-	-	-	34
-	-	-	-	-	-	-	-	-	33
-	-	-	-	-	-	-	-	-	32
-	-	-	-	-	-	-	-	-	31
-	-	-	-	-	-	-	-	-	30
-	-	-	-	-	-	-	-	-	29
-	-	-	-	-	-	-	-	-	28
-	-	-	-	-	-	-	-	-	27
-	-	-	-	-	-	-	-	-	26
-	-	-	-	-	-	-	-	-	25
-	-	-	-	-	-	-	-	-	24
-	-	-	-	-	-	-	-	-	23
-	-	-	-	-	-	-	-	-	22
-	-	-	-	-	-	-	-	-	21
-	-	-	-	-	-	-	-	-	20
-	-	-	-	-	-	-	-	-	19
-	-	-	-	-	-	-	-	-	18
-	-	-	-	-	-	-	-	-	17
-	-	-	-	-	-	-	-	-	16
-	-	-	-	-	-	-	-	-	15
-	-	-	-	-	-	-	-	-	14
-	-	-	-	-	-	-	-	-	13
-	-	-	-	-	-	-	-	-	12
-	-	-	-	-	-	-	-	-	11
-	-	-	-	-	-	-	-	-	10
-	-	-	-	-	-	-	-	-	9
-	-	-	-	-	-	-	-	-	8
-	-	-	-	-	-	-	-	-	7
-	-	-	-	-	-	-	-	-	6
-	-	-	-	-	-	-	-	-	5
-	-	-	-	-	-	-	-	-	4
-	-	-	-	-	-	-	-	-	3
-	-	-	-	-	-	-	-	-	2
-	-	-	-	-	-	-	-	-	1

-77	-76	-72	-71	-6	-2	-1	PART NO	DESCRIPTION	ITEM NO
-	-	-	-	-	-	-	-	-	84
-	-	-	-	-	-	-	-	-	83
-	-	-	-	-	-	-	-	-	82
-	-	-	-	-	-	-	-	-	81
-	-	-	-	-	-	-	-	-	80
-	-	-	-	-	-	-	-	-	79
-	-	-	-	-	-	-	-	-	78
-	-	-	-	-	-	-	-	-	77
-	-	-	-	-	-	-	-	-	76
-	-	-	-	-	-	-	-	-	75
-	-	-	-	-	-	-	-	-	74

DIMENSIONS: mm [IN]		TOLERANCES UNLESS OTHERWISE SPECIFIED:	
0 PLC	±	0 PLC	±
1 PLC	±	1 PLC	±
2 PLC	±	2 PLC	±
3 PLC	±	3 PLC	±
4 PLC	±	4 PLC	±
ANGLES	±	ANGLES	±

MATERIAL	FINISH	WEIGHT	SCALE	SHEET	OF	REV
-	-	-	3:5	1	1	A1

TYCO	Electronic
Tyco Electronics Harrisburg, PA 17105-3608	
NAME: FINE ADJUST SIDE FEED HDI APPLICATOR	
SIZE: 00779	CAGE CODE: 1528644
CUSTOMER DRAWING	