

### 5. CABLE SPECIFICATION : 2 CORE CABLE

CABLE TYPE: FLAT  SPIRAL CABLE  RIBBON  ROUND  OTHER

NO. OF CONDUCTORS: YES  NO

2. CABLE REQUIREMENTS : N/A

3. CONDUCTOR SPECIFICATIONS :

CONDUCTOR NO.	CONDUCTOR NO.
1 - CENTRE	4 - 5
2 - MATERIAL Tinned Cu	
3 - A.S.G.	
4 - STRANDING QTY/GAUGE 7/32	
5 - TENSILE STRENGTH N/A	
INSULATION :	
1 - MATERIAL PVC	
2 - MIN. WALL THICKNESS 8.28 REF	
3 - COLOUR 4 - 1 RED	
5 - 2 WHITE	
6 - OUTSIDE DIAMETER 8.59 REF	
7 - DIRECTION OF LAY N/A	
8 - LENGTH OF LAY 78.0 REF	
9 - U.L. RATING ENOUGH TO MAKE THE ASSEMBLY ROUND	

4. FILLER : N/A

5. SEPARATOR : N/A

6. SHIELD : FOL TYPE METAL OR PAPER/LAYER ALUMINIUM PAPER FOL FACING

7. DRAIN WIRE : GAUGE N/A STRANDING N/A REQUIREMENT N/A

8. SPIRAL BRAID : GAUGE N/A COPPER TYPE N/A

9. CABLE JACKET : TYPE PVC FINAL DIAMETER 8.5 REF MIN. THICKNESS 8.5 REF COLOUR BLACK FINISH GLOSS U.L. RATING N/A HARDNESS N/A STRIPABILITY N/A MARKINGS NONE

10. PACKAGING : PACKAGING SEE PACKAGING SPECIFICATION ESTABLISHED BY LOCAL PURCHASING AND MANUFACTURING DEPARTMENTS.

### 4. CABLE SPECIFICATION : 3 CORE CABLE

CABLE TYPE: FLAT  SPIRAL CABLE  RIBBON  ROUND  OTHER

NO. OF CONDUCTORS: YES  NO

2. CABLE REQUIREMENTS : N/A

3. CONDUCTOR SPECIFICATIONS :

CONDUCTOR NO.	CONDUCTOR NO.
1 - CENTRE	4 - 5
2 - MATERIAL Tinned Cu	
3 - A.S.G.	
4 - STRANDING QTY/GAUGE 7/34	
5 - TENSILE STRENGTH N/A	
INSULATION :	
1 - MATERIAL PVC	
2 - MIN. WALL THICKNESS 8.18 REF	
3 - COLOUR 1 - RED	
4 - 2 WHITE	
5 - 3 BLACK	
6 - OUTSIDE DIAMETER 8.59 REF	
7 - DIRECTION OF LAY N/A	
8 - LENGTH OF LAY 78.0 REF	
9 - U.L. RATING ENOUGH TO MAKE THE ASSEMBLY ROUND	

4. FILLER : N/A

5. SEPARATOR : N/A

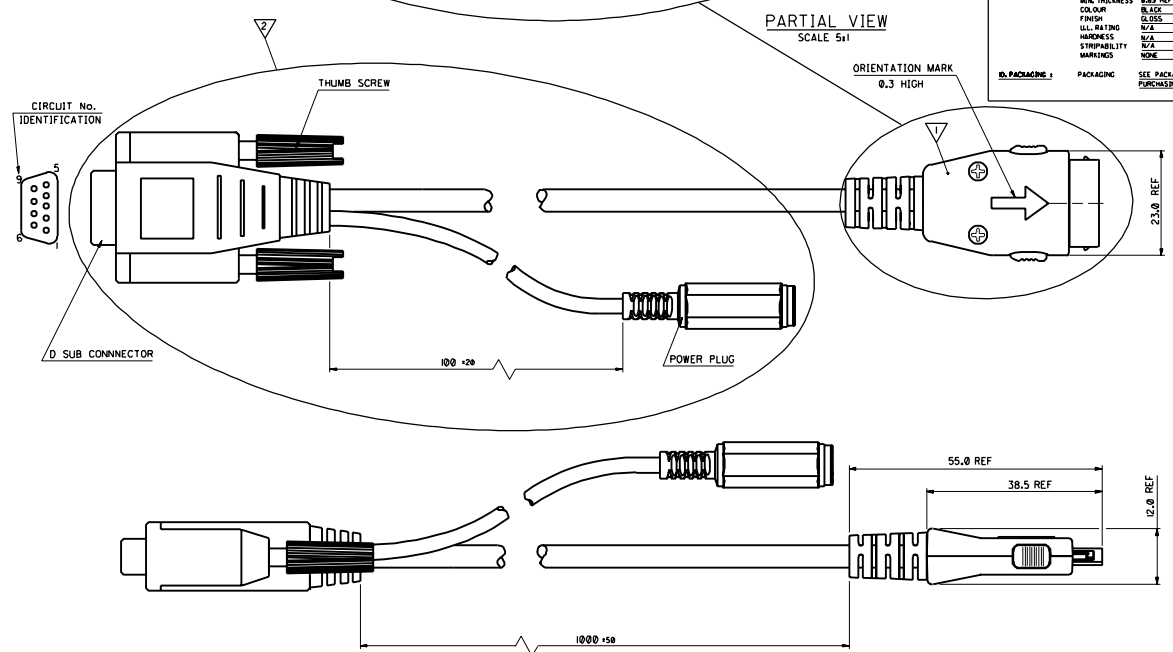
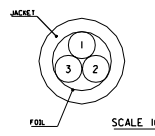
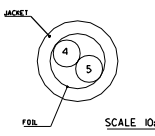
6. SHIELD : FOL TYPE METAL OR PAPER/LAYER ALUMINIUM PAPER FOL FACING

7. DRAIN WIRE : GAUGE N/A STRANDING N/A REQUIREMENT N/A

8. SPIRAL BRAID : GAUGE N/A COPPER TYPE N/A

9. CABLE JACKET : TYPE PVC FINAL DIAMETER 8.5 REF MIN. THICKNESS 8.5 REF COLOUR BLACK FINISH GLOSS U.L. RATING N/A HARDNESS N/A STRIPABILITY N/A MARKINGS NONE

10. PACKAGING : PACKAGING SEE PACKAGING SPECIFICATION ESTABLISHED BY LOCAL PURCHASING AND MANUFACTURING DEPARTMENTS.



**BILL OF MATERIALS**

NO.	QUANTITY	SUPPLIER	DESCRIPTION	PART No.	SEE NOTE
▽	1	MOLEX	16 CIRCUIT 1/0 MOBILE PHONE PLUG CONNECTOR	90813-0004	1, 2, 3, 4
▽	1	DR. NEUHAUS	D SUB CONNECTOR/POWER PLUG ASSEMBLY KIT	ONE 5170-01	5, 6, 7

**WIRING DIAGRAM :**

CIRCUIT No.	CONDUCTOR No.	CIRCUIT No.
2	1 RED	5
3	2 WHITE	6
5	3 BLACK	16
2 CORE CABLE		
6	4 RED	INNER
8	5 WHITE	OUTER

**NOTES:-**

- MATES WITH SERIES 90811 HANDSET CONNECTOR.
- SEE PRODUCT SPECIFICATION No. PS-99020-0033
- POWER CONTACTS TO BE ON CIRCUITS 1, 2, 5, 16
- CABLE CONDUCTORS & SELECTED TERMINALS COVERED WITH HEAT SHRINK INSULATION TUBING ON MOBILE PHONE PLUG CONNECTOR SIDE.
- SUPPLIER OR CUSTOMER APPROVED EQUIVALENT
- DIMENSIONAL AND FUNCTIONAL CHARACTERISTICS OF THE INDIVIDUAL COMPONENTS IN THIS SUB-ASSEMBLY ARE THE RESPONSIBILITY OF DR. NEUHAUS ENGINEERING GMBH.
- ONLY AVAILABLE FROM MOLEX AS PART OF A CABLE ASSEMBLY
- PACKAGING : SEE PACKING SPECIFICATION ES-99039-0002 (OPTION L3), AND LABELLED AS SHOWN YEAR AND MONTH, "XX", TO BE PRINTED ACCORDING TO IEC 62 INDEX 5.1.
- ASSEMBLIES TESTED FOR SHORTS AND CONTINUITIES BETWEEN ALL CIRCUITS.

XX MXI  
MOLEX 90813-1011

THIRD ANGLE PROJECTION

FOR PREVIOUS DRAWING ISSUES SEE MRL.

REVISIONS

DATE: 05.12.22

BY: MC

CHKD BY: MC

APP'D BY: MC

SCALE: NTS

THIRD ANGLE PROJECTION

REVISE ONLY ON CAD SYSTEM

DATE: 05.12.22

BY: MC

CHKD BY: MC

APP'D BY: MC

SCALE: NTS

MOLEX EUROPE

90813-1011

SHEET NO. 10F

DATE: 95/2/22

SDA-90813-1011