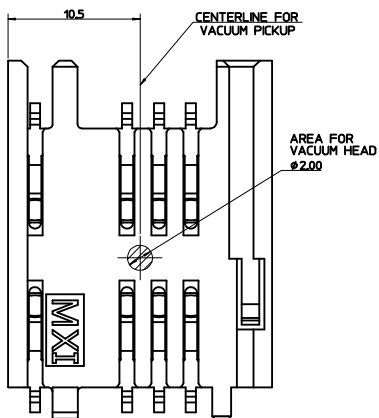
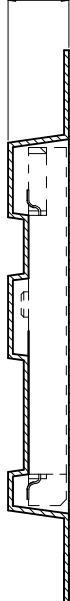


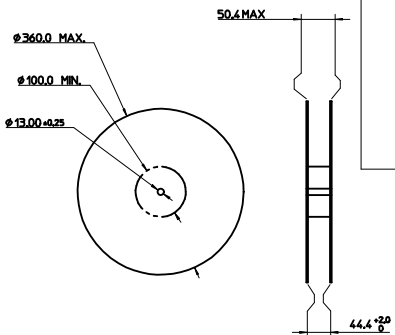
COMPONENT PICK UP DETAIL



4.9 MAX

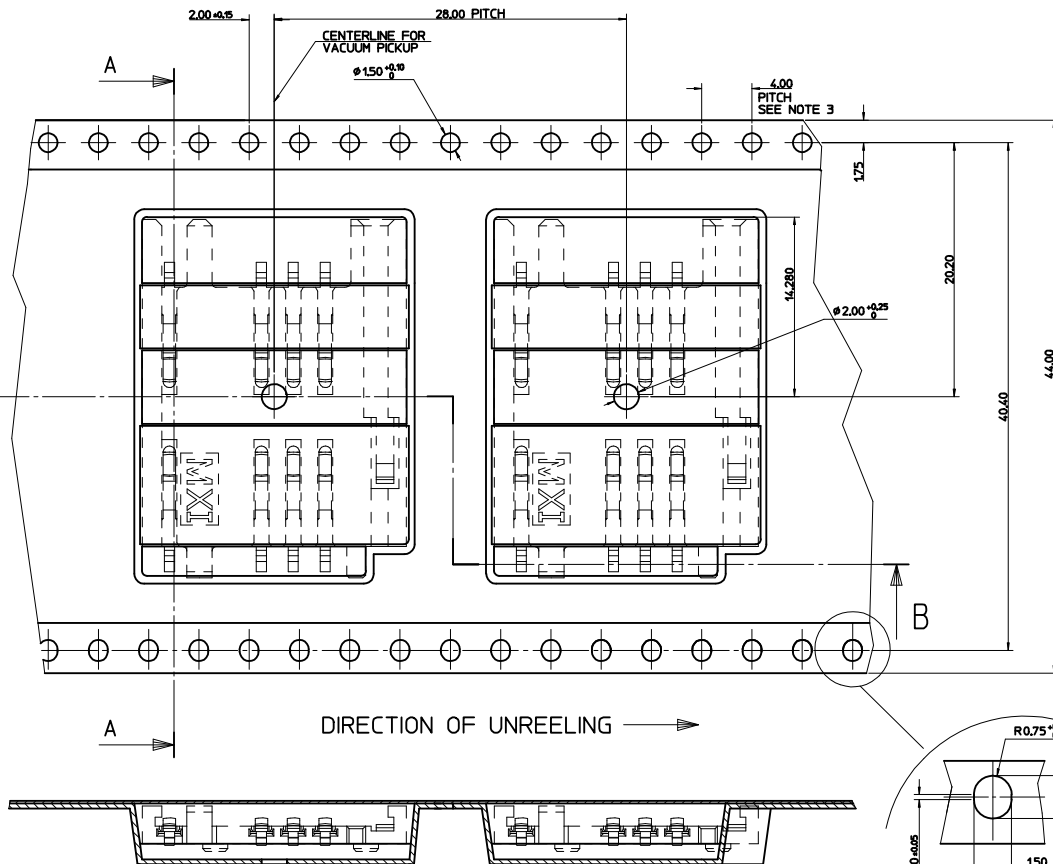
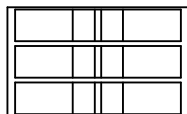


REFERENCE ONLY



REEL DIMENSIONS  
NOT TO SCALE

(500) PIECES ON A REEL  
(3) REELS / CARDBOARD BOX  
(1500) PIECES / CARDBOARD BOX - SUBJECT TO CHANGE



- NOTES:  
1. MATERIAL:  
CARRIER TAPE: VOLUNE CONDUCTIVE POLYSTYRENE, 0.40 REF THICK, BLACK  
COVER TAPE: COLD SEAL POLYESTER, 0.06 REF THICK, TRANSPARENT  
2. PEEL FORCE OF THE COVER TAPE IS 0.1N TO 1.0N  
AT MAXIMUM PEEL SPEED OF 300/min. ±10%  
3. PITCH TOLERANCE OVER ANY 10 PITCHES ±0.2  
4. REFERENCE ASSEMBLY DRAWING A1-91318-001



ORIGINAL RELEASE EC NO. E90207 DRAWING: WARNER 99/11/05 CHKG: CHGK APPR: APPR	QUALITY SYMBOLS MAJOR CRITICAL	GENERAL TOLERANCES: (UNLESS SPECIFIED)		SCALE: 5:1	DESIGN UNITS: <input checked="" type="checkbox"/> mm <input type="checkbox"/> INCH	THIRD ANGLE PROJECTION: <input type="checkbox"/> mm <input type="checkbox"/> INCH <input checked="" type="checkbox"/> mm ONLY	SHT: REV						
		4 PLACES ±--- ±---	3 PLACES ±--- ±---	2 PLACES ±0.10 ±---	1 PLACE ±0.20 ±---	ANGULAR: ± 2°	CAD FILENAME	MATERIAL NO. 91318-0001	DRAWING NO. SD-91318-006	SHEET NO. 99 of 1			
DESCRIPTION		DRAWN BY & DATE gwarner 99/03/05		CHECKED BY & DATE DBRENNAN99/03/05		APPROVED BY & DATE MWLWHITE 99/03/05		TITLE: BLISTER PACKAGING SIM CONNECTOR		MATERIAL NO. SD-91318-006		SHEET NO. 99 of 1	
REV: A		DRAWN BY & DATE		CHECKED BY & DATE		APPROVED BY & DATE		MATERIAL NO.		DRAWING NO.		SHEET NO.	
DRAFT WHERE APPLICABLE MUST REMAIN WITHIN DIMENSIONS		THIS DRAWING CONTAINS INFORMATION THAT IS PROPRIETARY TO MOLEX INCORPORATED AND SHOULD NOT BE USED WITHOUT WRITTEN PERMISSION.											