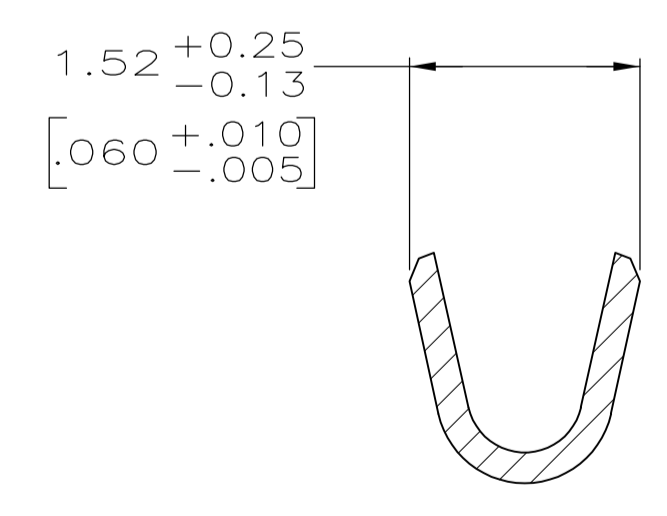
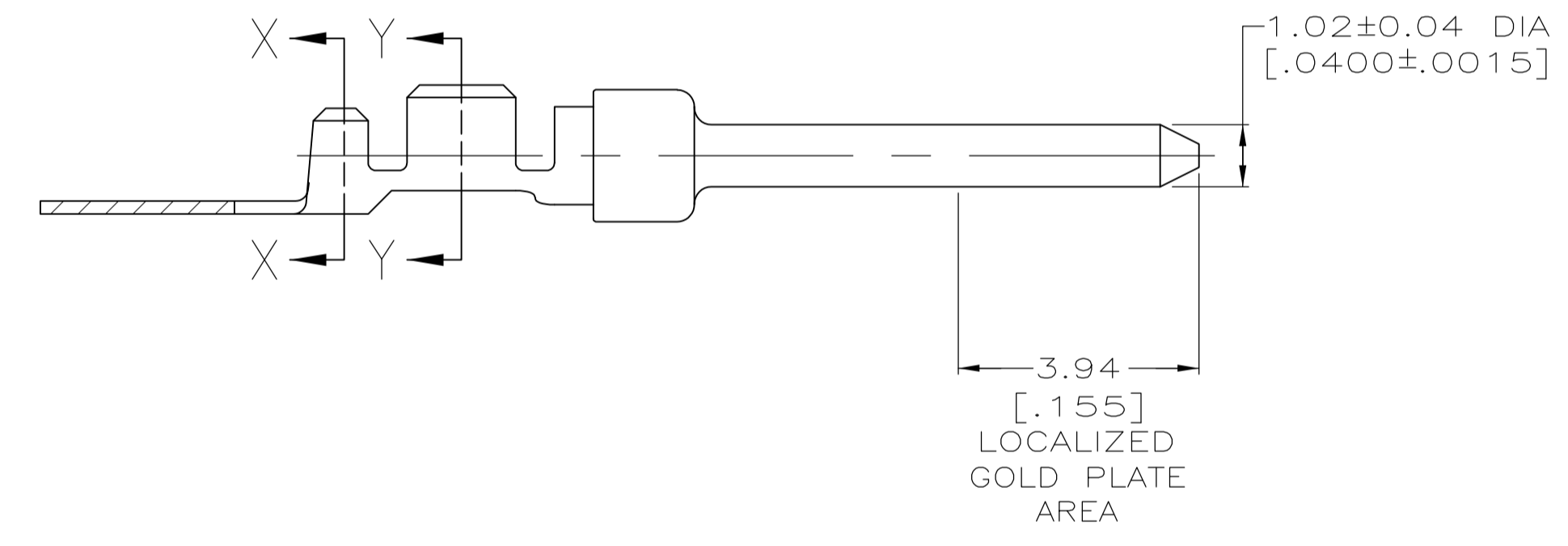
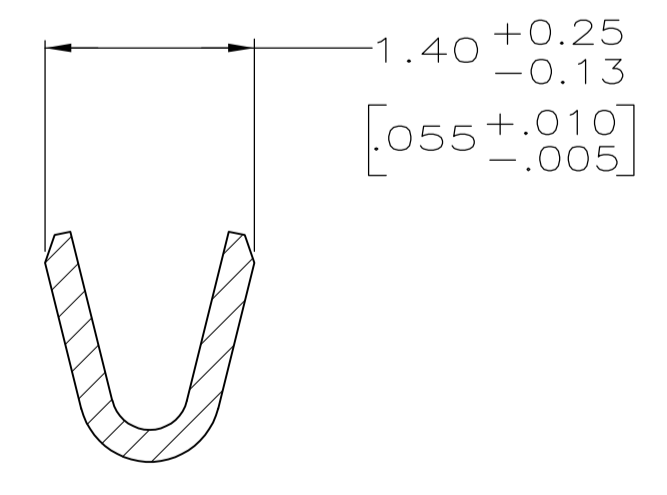


- 1 FOR MINI-APPLICATOR AND STRIPPER CRIMPER.
- 2 FOR HAND TOOL USE ONLY.
- 3. WIRE RANGE OF 24-28, INSULATION RANGE OF .030-.040.
- 4. TIN PLATING MAY NOT APPEAR ON CARRIER STRIP.
- 5 GOLD FLASH IN LOCALIZED GOLD PLATE AREA, 2.54μm [.000100] MIN TIN ON WIRE BARRELS, ALL OVER 0.76μm [.000030] MIN NICKEL UNDERPLATE.
- 6 GOLD FLASH IN LOCALIZED GOLD PLATED AREA, 0.76μm [.000030] MIN TIN ON WIRE BARRELS, ALL OVER 0.76μm [.000030] MIN NICKEL UNDERPLATE.
- 7 GOLD PLATED IN LOCALIZED GOLD PLATE AREA AS FOLLOWS:
0.76μm [.000030] MIN GOLD IN MATED AREA,
2.54μm [.000100] MIN TIN ON WIRE BARRELS, ALL OVER
1.27μm [.000050] MIN NICKEL UNDERPLATE.
OR
GOLD FLASH OVER
PALLADIUM-NICKEL PLATE, 0.76μm [.000030] MIN TOTAL IN MATED AREA,
2.54μm [.000100] MIN TIN ON WIRE BARRELS, ALL OVER
1.27μm [.000050] MIN NICKEL UNDERPLATE.
- 8 FOR STANDARD APPLICATOR ONLY.



SECTION X-X
INSULATION BARREL
SCALE 20:1



SECTION Y-Y
WIRE BARREL
SCALE 20:1

| 7 | 8 | STRIP | 1658540-6 |
|--------|-----|-------------|-------------|
| 2 | 2 | LOOSE PIECE | 1658540-5 |
| 1 | 1 | STRIP | 1658540-4 |
| 6 | 1 | STRIP | 1658540-3 |
| 1 | 1 | LOOSE PIECE | 1658540-2 |
| 5 | 1 | STRIP | 1658540-1 |
| FINISH | USE | TYPE | PART NUMBER |

THIS DRAWING IS A CONTROLLED DOCUMENT.

| | | | |
|-----------------------------|--|--|--------------------|
| DIMENSIONS: mm [INCHES] | TOLERANCES UNLESS OTHERWISE SPECIFIED: | DIN 11-17-04 | 11-17-04 |
| 0 PLC ± - | 1 PLC ± - | L VARELA - DOCKS | 11-17-04 |
| 2 PLC ± 0.13 [.005] | 3 PLC ± - | S BOLASH | 11-17-04 |
| 4 PLC ± - | ANGLES ± - | M WALMSLEY | 11-17-04 |
| MATERIAL: BRASS | FINISH: SEE TABLE | APPROVED: M WALMSLEY | NAME: M WALMSLEY |
| PRODUCT SPEC: 108-40005 | | PIN CONTACT, 20 DF, 24-28 AWG, AMPLIMITE | |
| APPLICATION SPEC: 114-10000 | | SIZE: A1 | CAGE CODE: 1658540 |
| WEIGHT: - | | CUSTOMER DRAWING | |
| SCALE: 10:1 | | SHEET 1 OF 1 | |