

4

3

2

1


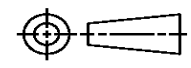
THIS DRAWING IS UNPUBLISHED. RELEASED FOR PUBLICATION
© COPYRIGHT ALL RIGHTS RESERVED.

LOC	DIST	REVISIONS			
P	LTR	DESCRIPTION	DATE	DWN	APVD
	B1	ECR-16-009824	28JUL2016	GK	SD

REPLACED BY OCEAN STYLE APPLICATOR PART NUMBER 2151286-1

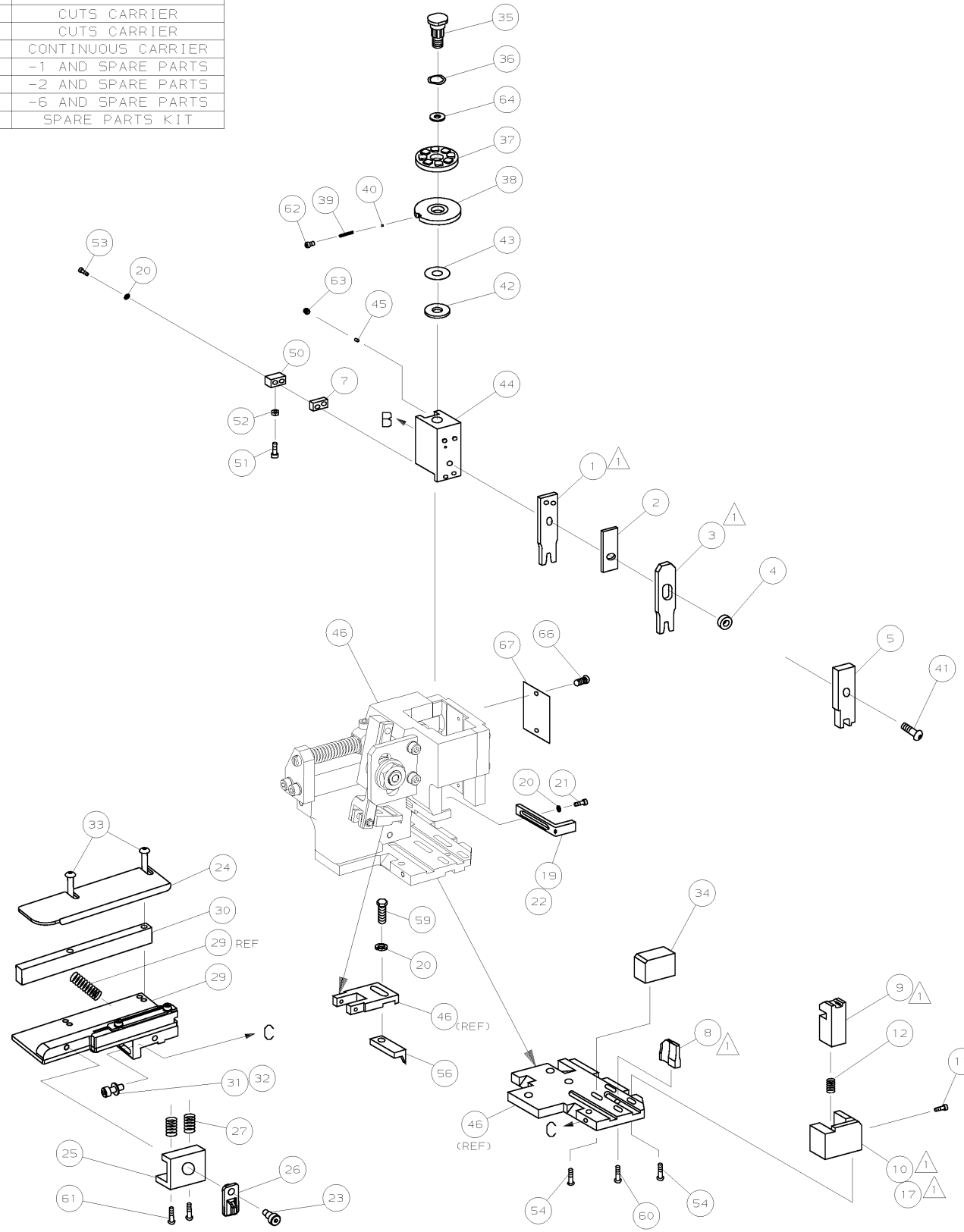
FOR REPLACEMENT PARTS FOR APPLICATOR 1426168
REFER TO ADDITIONAL PAGE(S). SPARE PARTS KIT (IF LISTED)
WILL REMAIN AVAILABLE.

THE REPLACEMENT OCEAN STYLE APPLICATOR HAS THE
SAME TERMINATOR/PRESS INTERFACE AS APPLICATOR
1426168

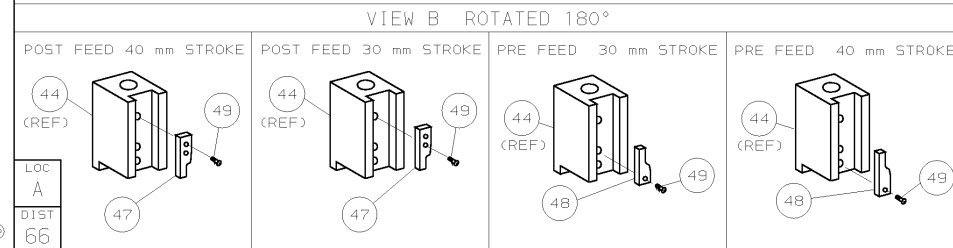
THIS DRAWING IS A CONTROLLED DOCUMENT.		DWN	GOPALAKRISHNA HV			TE Connectivity	
DIMENSIONS:		CHK	GOPALAKRISHNA HV			NAME	
		TOLERANCES UNLESS OTHERWISE SPECIFIED:		SIDE FEED HD-I APPLICATOR			
		0 PLC	±	APVD	STOUGH DALE		
MATERIAL		1 PLC	±	PRODUCT SPEC	APPLICATION SPEC		
FINISH		2 PLC	±	SIZE	CAGE CODE	DRAWING NO	RESTRICTED TO
		3 PLC	±	A3		©- 1426168	
		4 PLC	±	CUSTOMER DRAWING		SCALE	SHEET 1 OF 2
		ANGLES	±				REV B1

PART NUMBER	REV	FIRST USED	TERMINATOR	FEED TYPE	DESCRIPTION
1426168-1	B	-	LEADMAKER	MECH POST FEED	CUTS CARRIER
1426168-2	B	-	BENCH	MECH PRE FEED	CUTS CARRIER
1426168-6	B	-	LEADMAKER	MECH POST FEED	CONTINUOUS CARRIER
7-1426168-1	B	-	LEADMAKER	MECH POST FEED	-1 AND SPARE PARTS
7-1426168-2	B	-	BENCH	MECH PRE FEED	-2 AND SPARE PARTS
7-1426168-6	B	-	LEADMAKER	MECH POST FEED	-6 AND SPARE PARTS
7-1426168-7	A	-	-	-	SPARE PARTS KIT

CRIMP DATA AMP TERMINAL AMP CRIMP SPECS			
TERMINAL NAME: PIN & SOCKET U-M-L			
CRIMP	SIZE	TYPE	RANGE
WIRE	1.40 [.055 IN]	F	30-22 AWG
INSUL	2.29 [.090 IN]	F	1.00-1.90 [.040-.075 IN]
WIRE STRIP LENGTH		APPL INSTRUCTION	
3.96-4.75 [.156-.187 IN]		408-8322	
TERMINAL		FEED	
APPL SPEC 114-1012		9.05 [.356 IN]	
TERMINALS APPLIED			
350078	-	-	-
350079	-	-	-
-	-	-	-
-	-	-	-
-	-	-	-
-	-	-	-
-	-	-	-
WIRE SIZE	CRIMP HEIGHT	PIN PN & LENGTH [IN]	
mm ² AWG			
22 AWG	0.94 ±0.05 [.037 ±.002 IN]	5-354779-0 [.3240]	
24 AWG	0.89 ±0.05 [.035 ±.002 IN]	5-354779-6 [.3270]	
26 AWG	0.84 ±0.05 [.033 ±.002 IN]	6-354779-0 [.3290]	
28 AWG	0.81 ±0.05 [.032 ±.002 IN]	6-354779-2 [.3300]	
30 AWG	0.79 ±0.05 [.031 ±.002 IN]	6-354779-4 [.3310]	



- 1. RECOMMENDED SPARE PARTS.
- 2. GREASE RAM, CAM, CAM FOLLOWER AND FEED ROD LIGHTLY.
- 3. LUBRICATE DAILY PER THE APPLICATOR INSTRUCTION SHEET SUPPLIED WITH THE APPLICATOR.
- 4. FEED REQUIRES ADJUSTMENT WHEN CHANGING FROM ONE TERMINAL TO ANOTHER.



QTY	REQD	PER	ASSY	PART NO	DESCRIPTION	ITEM NO		
-	1	1	1	1	1	1426168	PRINT, APPLICATOR LOG SHEET	73
-	1	1	1	1	1	1338705-1	DOCUMENTATION PACKAGE	72
-	-	-	-	-	-	-	-	71
-	-	-	-	-	-	-	-	70
-	-	-	-	-	-	-	-	69
-	-	-	-	-	-	-	-	68
-	1	1	1	1	1	461264-1	PLATE, IDENTIFICATION	67
-	2	2	2	2	2	21017-2	SCR,DRIVE (#2X.19) ID PLATE	66
-	-	-	-	-	-	-	-	65
-	1	1	1	1	1	986950-1	WASHER, FLAT PRECISION	64
-	1	1	1	1	1	3-18031-0	SCR,SKT SET (M6X6) RAM	63
-	1	1	1	1	1	18023-9	SCR,SHC (M4X6) INS DISC	62
-	2	2	2	2	2	1-18024-5	SCR,BHC (M5X25) DRAG	61
-	1	1	1	1	1	18024-7	SCR,BHC (M4X10) ANVIL	60
-	1	1	1	1	1	5-18022-2	SCR,HEX (M4X8) FEED FINGER	59
-	-	-	-	-	-	-	-	58
-	-	-	-	-	-	-	-	57
-	1	1	1	1	1	1338685-1	PAWL, FEED	56
-	-	-	-	-	-	-	-	55
-	4	4	4	4	4	18024-8	SCR,BHC (M4X12) SHEAR HOLDER	54
-	2	2	2	2	2	1-18023-3	SCR,SHC (M4X16) TERM HLD DWN	53
-	1	1	1	1	1	18030-1	NUT,HEX (M3)HOLD DOWN	52
-	1	1	1	1	1	811242-5	BUMPER, HOLDDOWN	51
-	1	1	1	1	1	690753-2	SPACER, TONKER	50
-	1	1	1	1	1	18024-3	SCR,BHC (M3X10) CAM	49
-	-	-	-	-	-	-	-	48
-	1	1	1	1	1	1338675-1	CAM, PRE FEED 30 & 40 mm ST	48
-	1	1	1	1	1	1338676-1	CAM, POST FEED 30 & 40 mm ST	47
-	1	1	1	1	1	1320999-3	APPLICATOR BASIC SUBASSY	46
-	1	1	1	1	1	690191-1	PLUG, NYLON	45
-	1	1	1	1	1	1338660-1	RAM	44
-	1	1	1	1	1	690125-1	WASHER, LAMINATED	43
-	1	1	1	1	1	690124-1	WASHER, RAM	42
-	1	1	1	1	1	2-18024-6	SCR,BHC (M8X25) RAM	41
-	1	1	1	1	1	23241-1	BALL, STEEL	40
-	1	1	1	1	1	2-22278-7	SPRING, COMPRESSION	39
-	1	1	1	1	1	1320922-1	DISC, INSULATION	38
-	1	1	1	1	1	354777-1	WIRE DISC, PLASTIC	37
-	1	1	1	1	1	22480-5	WASHER, SPRING	36
-	1	1	1	1	1	690212-1	POST, RAM	35
-	1	1	1	1	1	1320934-1	SUPPORT, TERMINAL	34
-	2	2	2	2	2	1-18024-0	SCR,BHC (M4X20) STRIP GUIDE	33
-	1	1	1	1	1	18027-2	WASHER, FLAT (M4)	32
-	1	1	1	1	1	1-18023-2	SCR,SKT CAP (M4X12) MOUNT BLOCK	31
-	1	1	1	1	1	1320908-1	SPACER, STRIP GUIDE	30
-	1	1	1	1	1	1633073-1	STRIP GUIDE PLATE ASSY	29
-	-	-	-	-	-	-	-	28
-	2	2	2	2	2	1-22284-0	SPRING, DRAG	27
-	1	1	1	1	1	356835-1	LEVER, DRAG RELEASE	26
-	1	1	1	1	1	240792-1	DRAG, TERMINAL	25
-	1	1	1	1	1	1320928-1	PLATE, STRIP GUIDE	24
-	1	1	1	1	1	980371-4	SCR,SHC SHLD	23
-	1	1	1	1	1	690472-2	STRIPPER	22
-	1	1	1	1	1	1-18023-1	SCR,SHC (M4X10) STRIPPER	21
-	4	4	4	4	4	18025-2	WASHER,LOCK (M4) STRIPPER	20
-	-	-	-	-	-	-	-	19
-	1	1	1	1	1	690472-1	STRIPPER	18
-	-	-	-	-	-	-	-	17
-	1	1	1	1	1	1338684-1	HOLDER, SHEAR, FRONT (NO-CUT)	16
-	-	-	-	-	-	-	-	15
-	-	-	-	-	-	-	-	14
-	-	-	-	-	-	-	-	13
-	1	1	1	1	1	5-22280-0	SPRING, SHEAR	12
-	1	1	1	1	1	356885-4	STOP, SHEAR	11
-	-	-	-	-	-	-	-	10
-	1	1	1	1	1	1320921-1	HOLDER, SHEAR, FRONT (CUT)	10
-	1	1	1	1	1	462006-4	SHEAR, FLOAT (FRONT)	9
-	1	2	2	2	2	1-1333201-5	ANVIL	8
-	1	1	1	1	1	240641-3	SPACER, DEPRESSOR (REAR)	7
-	-	-	-	-	-	-	-	6
-	1	1	1	1	1	2-455889-0	DEPRESSOR, SHEAR (FRONT)	5
-	1	1	1	1	1	2-238011-2	SPACER, BLOCK CRIMPER	4
-	1	2	2	2	2	6-456134-3	CRIMPER, INSULATION	3
-	1	1	1	1	1	455888-7	SPACER, CRIMPER	2
-	1	2	2	2	2	1-456402-6	CRIMPER, WIRE	1

QTY REQD PER ASSY

REVISION OF EACH ASSY NO (WHEN BLANK, USE DWG REVISION)

PARTS LIST

DIMENSIONS: mm [INCHES]

DO NOT SCALE PRINT.

TOLERANCES UNLESS OTHERWISE SPECIFIED:

1 PLC DEC ±0.5 [.02 IN]

2 PLC DEC ±-

3 PLC DEC ±-

ANGLES ±-

SURF TEXTURE, REMOVE BURRS, BREAK SHARP EDGES RO.38 MAX

MATL - HT TR - FIN -

DR M.CLIFFORD 26FEB01 APP F.BACKHURST 26FEB01

CHK - REL 30MAR01

L.LOFTHOUSE

AMP Incorporated Harrisburg, PA 17105-3608

NAME SIDE FEED HD-I APPLICATOR MACHINE REF HD-I APPL

SCALE - DWG NO 1426168 SHEET 1 OF 1 REV B

CASE CODE 00779 CUSTOMER AND ASSEMBLY DRAWING RESTRICTED TO

THIS DRAWING IS A CONTROLLED DOCUMENT

LAYOUT L1426168 SET UP GAGE 458637-3

2000 RELEASED FOR PUBLICATION BY AMP INCORPORATED. ALL RIGHTS RESERVED. THIS DRAWING IS UNRELEASABLE. AMP 1756 REV 3-92