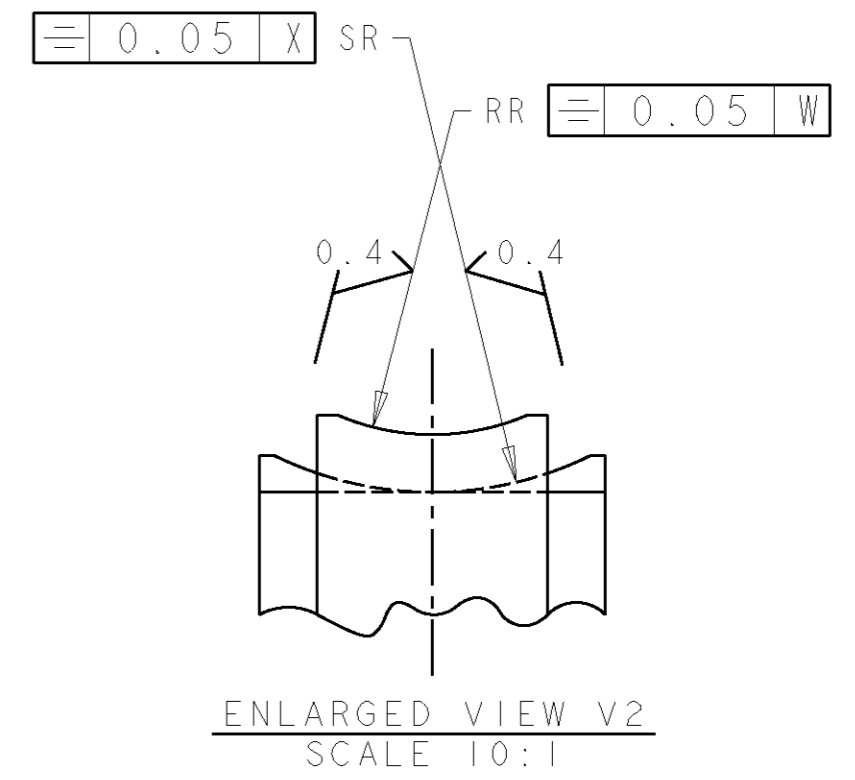
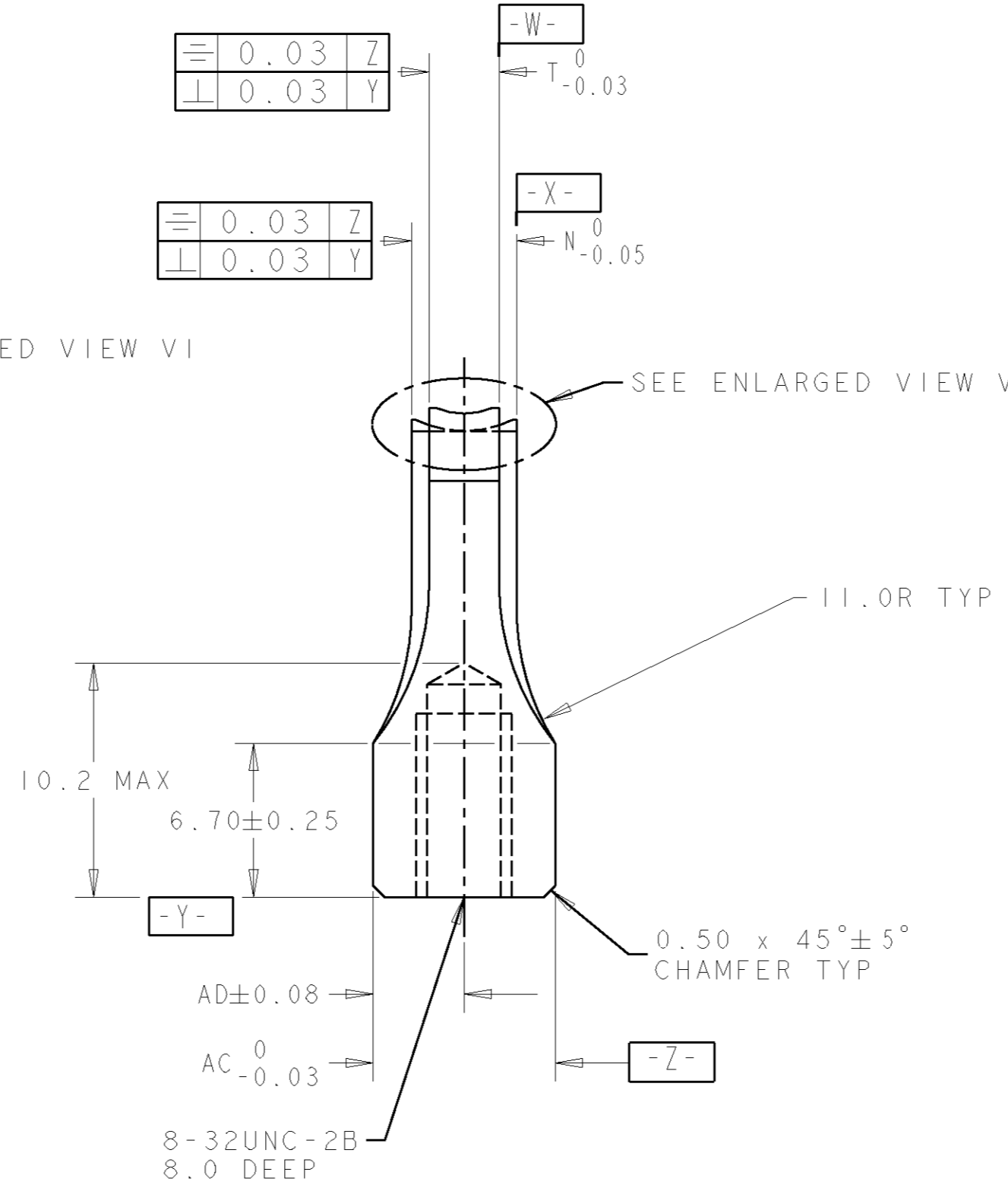
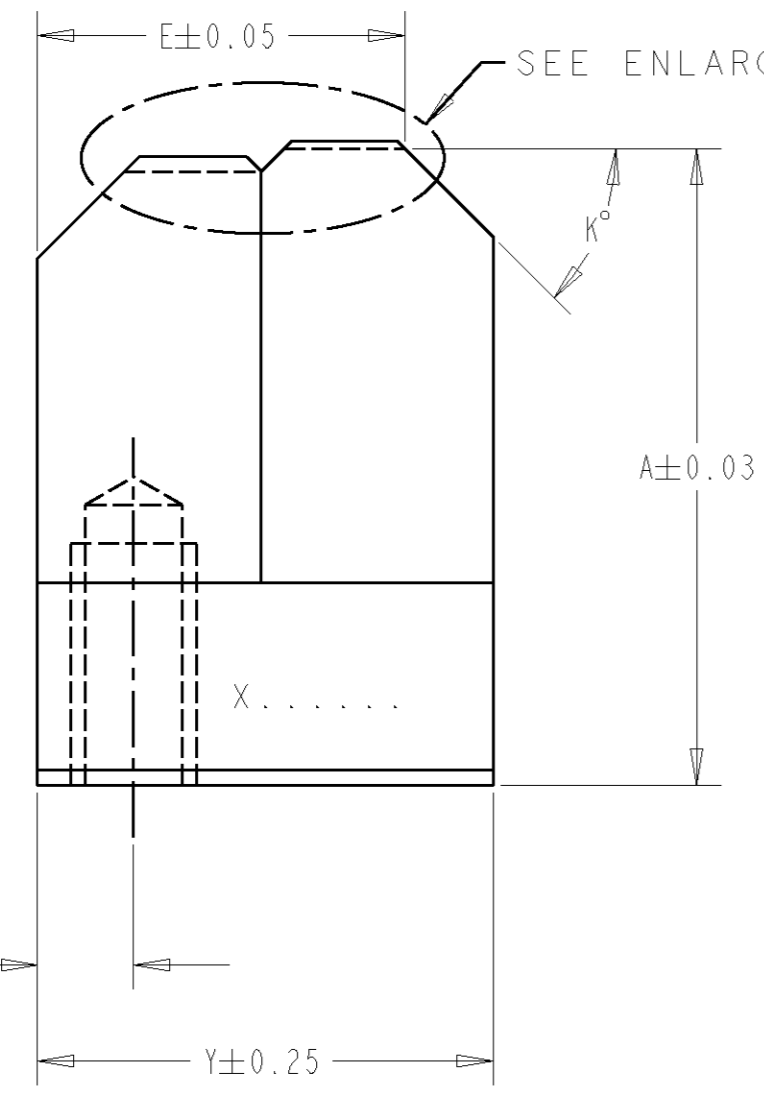
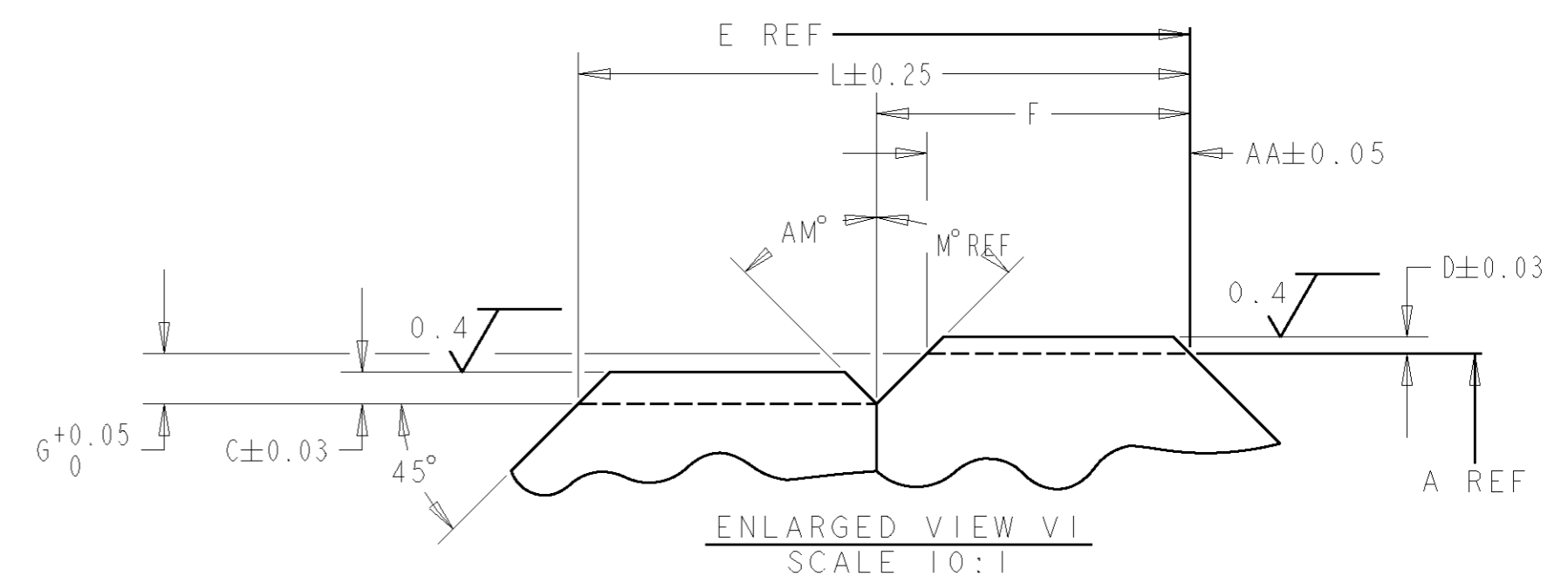
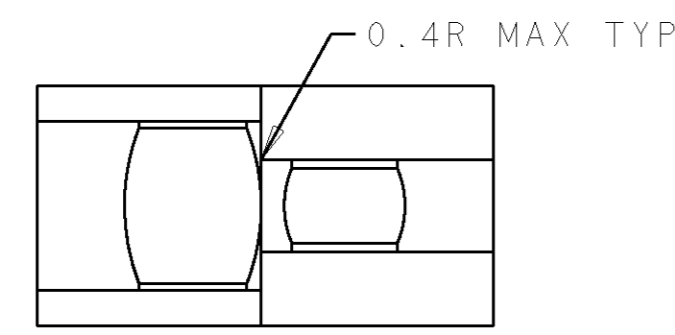


3-D ANGLE (AMERICAN) PROJECTION  
DIMENSIONS IN METRIC  
DO NOT SCALE PRINT

NUMBER  
576258

IDENTIFY PART AS PER SPEC. 115-67-2 IN AREA X.....  
FOR METHOD, REFER TO PARA 3.3 C; INCLUDE VENDOR SYMBOL, AND ENSURE PART IS DEMAGNETISED.  
LEGAL, HEALTH, SAFETY AND ENVIRONMENTAL CONSTRAINTS  
MAY APPLY TO THE MATERIALS SPECIFIED ON THIS DOCUMENT REFER TO ENGINEERING MATERIAL SPEC. 100-3012



NOTES:  
1. TOP EDGES TO REMAIN SHARP, REMOVE BURRS ONLY.

REV	ENGINEER	ECN	DATE	REV	ENGINEER	ECN	DATE	SHT 1 OF 2	LOC E	A2	NUMBER	REV Y
-	-	-	-	K	S. J. MASSIE	T3032	24-02-93					
Y	M. CLIFFORD	EB00-0232-99	21-04-99	J	S. J. MASSIE	T3012	04-02-93					
W	L. J. LOFTHOUSE	EB00-0163-97	20-03-97	H	S. J. MASSIE	T2999	25-01-93					
V	L. J. LOFTHOUSE	EB00-0268-96	03-06-96	G	S. J. MASSIE	T2933	29-10-92					
U	L. J. LOFTHOUSE	EB00-0120-96	19-03-96	F	S. J. MASSIE	T2923	22-10-92					
T	R. M. SOUIRES	T3554	23-06-95	E	S. J. MASSIE	T2911	07-10-92					
S	R. M. SOUIRES	T3458	29-09-94	D	S. J. MASSIE	T2792	19-06-92					
R	S. J. MASSIE	T3402	26-05-94	C	S. J. MASSIE	T2735	21-04-92					
P	S. J. MASSIE	T3261	12-04-94	B	S. J. MASSIE	T2661	14-02-92					
N	S. J. MASSIE	T3229	10-08-93	A	S. J. MASSIE	T2642	31-01-92					
M	S. J. MASSIE	T3149	13-05-93	O	S. J. MASSIE	T2639	22-01-92					
L	S. J. MASSIE	T3097	01-04-93	I	S. J. MASSIE	AS DRN	26-09-91					

REMOVE BURRS, BREAK SHARP EDGES 0.38R MAX.  
UNLESS OTHERWISE SPECIFIED } 0.0 = ± 0.51 0.000 = ± 0.013 0.8  
0.00 = ± 0.13 ANGLES = ± 0° 30'

FIRST USED SEE TABLE SCALE 4:1

DR. S. J. MASSIE 09/91  
CHK. J. GARDNER 01/92  
APP. F. A. B. 01/92

**AMP** TERMINAL HOUSE, STANMORE, MIDD.  
of Great Britain Ltd.

ANVIL, COMBINATION

PRINT DIST. - B+

IDENTIFY PART AS PER SPEC. 115-67-2 IN X.....  
 FOR METHOD, REFER TO PARA 3.3 C; INCLUDE VENDOR SYMBOL, AND ENSURE PART IS DEMAGNETISED.  
 LEGAL, HEALTH, SAFETY AND ENVIRONMENTAL CONSTRAINTS  
 MAY APPLY TO THE MATERIALS SPECIFIED ON THIS DOCUMENT REFER TO ENGINEERING MATERIAL SPEC. 100-3012


576258  
 NUMBER

3rd ANGLE (AMERICAN) PROJECTION  
 DIMENSIONS IN METRIC  
 DO NOT SCALE PRINT

This information is confidential and is disclosed to you on condition that no further disclosure is made by you to other than AMP Personnel without written authorization from AMP of GREAT BRITAIN LTD.

PART NO	REV	T	N	A	G	AA	F	L	E	Y	AM°	M°	K°	D	RR	C	SR	AC	AD	FIRST USED
576258-1	0	2.03	3.56	21.06	0.40	4.85	5.23	8.84	12.50	15.06	45°	43°	45°	0.15	2.29	0.86	1.78	7.92	3.96	9-576533-2
576258-2	J	3.56	6.35	21.06	0.30	4.38	4.90	9.42	12.14	15.06	#	60°	45°	0.28	4.75	#	#	7.92	3.96	1-576074-0
576258-3	B	2.03	3.56	21.06	#	#	4.70	8.23	12.14	15.06	45°	45°	45°	0.15	2.29	0.28	4.75	7.92	3.96	576590-5
576258-4	C	2.79	3.81	21.06	0.50	4.06	4.55	7.69	12.50	15.06	30°	44°	45°	0.23	3.18	0.87	2.00	7.92	3.96	9-576533-3
576258-5	D	2.29	3.56	20.55	0.51	3.56	4.45	7.92	12.14	15.06	30°	60°	45°	0.18	2.29	0.82	1.84	7.92	3.96	1-576527-7
576258-6	D	2.79	3.94	21.06	#	#	5.08	9.65	11.89	15.06	45°	#	45°	0.20	3.18	0.50	3.18	7.92	3.96	576519-6
576258-7	E	2.54	3.81	21.06	0.38	4.34	5.00	8.89	12.09	15.00	45°	60°	45°	0.18	3.18	0.30	4.75	7.92	3.96	2-576074-1
576258-8	H	6.35	8.89	20.32	1.02	5.84	7.59	13.16	13.67	16.59	30°	60°	45°	0.46	7.92	1.07	8.89	9.53	4.76	576077-4
576258-9	G	3.05	4.57	21.06	#	#	5.66	10.31	13.54	15.06	45°	#	45°	0.18	3.18	1.16	2.36	7.92	3.96	576540-3
1-576258-0	K	2.79	3.94	21.06	#	#	6.92	10.73	15.00	18.00	45°	45°	45°	0.23	3.18	0.75	2.34	7.92	3.96	576009-9
1-576258-1	L	2.29	3.81	20.55	0.51	3.60	3.89	9.65	12.00	15.06	30°	30°	45°	0.18	2.29	0.94	1.93	7.92	3.96	3-576074-3
1-576258-2	M	2.29	4.06	21.06	0.38	3.30	3.96	7.62	12.14	15.06	30°	60°	45°	0.18	2.29	0.36	4.75	7.92	3.96	2-576074-8
1-576258-3	N	2.79	6.25	21.06	0.38	4.98	5.64	10.62	12.14	15.06	#	60°	45°	0.23	3.18	#	#	7.92	3.96	576520-3
1-576258-4	P	2.79	4.32	21.06	0.38	4.88	5.26	9.53	11.89	15.06	45°	45°	45°	0.23	3.18	1.02	2.30	7.92	3.96	4-576074-9
1-576258-5	R	3.56	5.33	20.32	0.76	4.83	5.59	11.18	11.89	15.06	45°	45°	45°	0.28	4.75	1.45	2.74	7.92	3.96	1-576042-6
1-576258-6	S	2.79	4.32	21.06	#	#	4.82	8.82	12.50	15.06	30°	#	45°	0.23	3.18	0.51	3.86	7.92	3.96	8-576019-6
1-576258-7	S	3.56	5.23	21.06	0.51	5.59	6.48	10.85	12.40	15.06	30°	60°	45°	0.25	4.75	0.53	6.35	7.92	3.96	576097-6
1-576258-8	T	4.57	6.86	21.06	0.76	5.46	6.22	11.56	12.19	15.06	#	45°	45°	0.36	4.75	1.56	4.13	7.92	3.96	3-576064-5
1-576258-9	U	4.06	5.23	21.06	0.69	4.83	6.02	11.00	12.14	15.88	30°	60°	45°	0.25	6.35	0.64	4.75	7.92	3.96	6-576074
2-576258-0	V	3.05	4.47	21.06	0.40	4.70	5.41	11.05	12.14	15.06	30°	60°	45°	0.25	3.18	1.18	2.34	7.92	3.96	7-576074-6
2-576258-1	W	3.56	4.06	21.06	0.40	4.45	4.83	10.50	12.14	15.0	30°	30°	45°	0.48	1.07	1.04	2.03	7.92	3.96	6-576019-5
2-576258-2	Y	2.29	3.30	21.06	0.63	3.17	3.81	9.53	11.89	15.06	45°	45°	30°	0.18	2.29	0.83	1.59	7.92	3.96	1157041-1
2-576258-3																				
2-576258-4																				
2-576258-5																				
2-576258-6																				
2-576258-7																				
2-576258-8																				
2-576258-9																				
3-576258-0																				
3-576258-1																				
3-576258-2																				
3-576258-3																				

SEE SHEET ONE

MATERIAL	HEAT TREAT	FINISH						
100-43	111-43 Rc 56-58	112-157						
UNLESS OTHERWISE SPECIFIED } 0.0 = ± 0.51 0.000 = ± 0.013 0.8 ✓ 0.00 = ± 0.13 ANGLES = ± 0° 30'								
FIRST USED	SCALE							
SEE TABLE	#							
DR. S. J. MASSIE	10/91	 TERMINAL HOUSE, STANMORE, MIDDX. of Great Britain Ltd.						
CHK. J. GARDNER	01/92							
APP. F. A. B.	01/92							
REV	ENGINEER	ECN	DATE	SHT 2 OF 2	LOC E A2	NUMBER	576258	REV Y