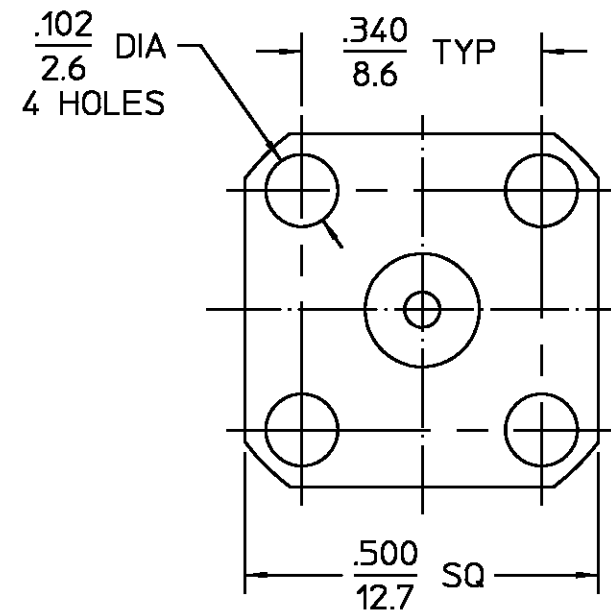


REVISIONS			
REV	DESCRIPTION	DATE	APPROVED
010	RELEASED	3/7/97	S. Morby



NOTES:
1. CAPTURED CENTER CONTACT

ELECTRICAL	MECHANICAL	ENVIRONMENTAL	HOUSING	DIELECTRIC	CENTER CONTACT	COMPONENT	MATERIAL	FINISH
Nominal Impedance (Ohms) <u>50</u>	Interface Dimensions MIL-STD-348A, Fig. 310.2	Temperature Rating <u>-65°C to +125°C</u>	BRASS, PER ASTM-B-16 HALF HARD OR CZ121 PER BS2874	TFE FLUOROCARBON PER ASTM-D-1457	BERYLLIUM COPPER PER ASTM-B-196 OR ASTM-B-197 ALLOY C17300, CONDITION H			WHITE BRONZE PLATE
Frequency Range (GHz) <u>DC to 6</u>	Recommended Mating	Vibration MIL-STD-202, Method 204, Condition D						N/A
Volt Rating (VRMS MAX) <u>Sea Level 335</u>	Torque <u>3-5 in-lbs (0.34-0.57 Nm)</u>	Shock MIL-STD-202, Method 213, Condition I						GOLD PLATE
VSWR <u>1.40:1</u>	Mating Characteristics:	Thermal Shock MIL-STD-202, Method 107, Condition A						
Insertion Loss (dB MAX) <u>.07√f(GHz)</u>	Insertion (MAX Lbs) <u>3.0 (1.36 Kg)</u>	Moisture Resistance MIL-STD-202, Method 106, except step 7b is omitted. No measurement at high humidity. Insulation resistance shall be at least 200 Megohms within 5 minutes after removal from humidity.						
RF Leakage (dB MIN) <u>-90 @ 2 to 3 GHz</u>	Withdrawal (MIN Oz) <u>1.0 (28.35 g)</u>							
Corona, 70,000 Ft (VRMS MIN) <u>250</u>	Force to Engage and Disengage (in-Lbs MAX) <u>2.0 (0.23 Nm)</u>							
Dielectric Withstanding Voltage (VRMS MIN) <u>Sea Level 1000</u>	Center Contact Captivation							
Contact Resistance (Milliohms MAX)	Axial (Lbs) <u>6.0 (2.7 Kg) MIN</u>							
Center Contact <u>3.0</u>	FROM INTERFACE							
Outer Contact <u>2.0</u>	Axial (Lbs) <u>4.0 (1.8 Kg) MIN</u>							
Cable to Housing <u>N/A</u>	FROM FLANGE							
RF High Potential <u>Sea Level (VRMS MIN @ 5 MHz) 670</u>	Radial (in-Oz) <u>4.0 (0.028 Nm)</u>							
I.R.(Megohms MIN) <u>5,000</u>	Weight (Grams) <u>TBD</u>							
		.XXX = in XX.X = mm (REF)						
			UNLESS OTHERWISE SPECIFIED DIMENSIONS ARE IN INCHES TOLERANCE ON	DRAWN BY <u>S. Morby</u> DATE <u>01/13/97</u>	AMP Incorporated 140 Fourth Avenue Waltham, MA 02451-7599			
			FRAC. DEC. ANGLES ±1/64 ±.005 ± 1°	CHECKED BY	TITLE SMA.com 4 HOLE FLANGE MOUNT JACK RECEPTACLE, STRAIGHT TERMINAL			
			These drawings and specifications are the property of M/A-COM Interconnect Division and shall not be reproduced or copied or used in whole or in part as the basis for the manufacture or sale of item(s) without written permission.	APP'D BY	NO. AP. <u>N/A</u>			
					SIZE <u>B</u>	CODE IDENT NO. <u>26805</u>	<u>2252-1901-36</u>	REV <u>010</u>
					SCALE <u>4:1</u>			SHEET 1 OF 1

CUSTOMER DRAWING

AMP PART # 1086493-1
SHEET 1 OF 1 REV A