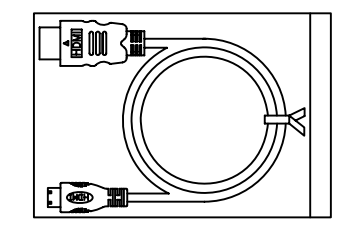
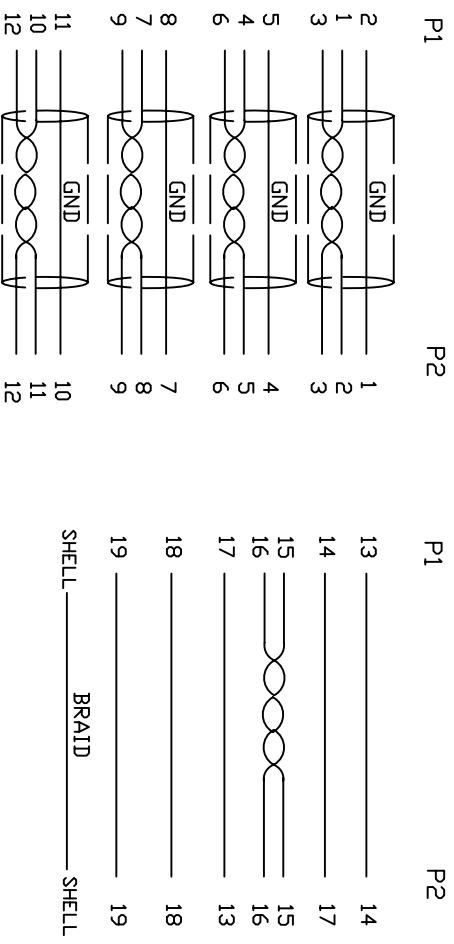


1. Wiring Diagram.



2. Cable test condition :

Open / Short : 100%

Insulation resistance : 5M ohms

Contact resistance : 2 ohm

Hipot : DC 300V / 1 sec

3Each pcs with PE polybag.

7	COPER	W25MM*1.45MM	1	
6	COPER	W20MM*1.35MM	1	
5	PVC	45P PVC BLACK OVERMOLD	25g	
4	PE	LLDPE 500026 6201 INSIDE MOLDING	16g	
3	CONN	HDMI C TYPE MALE PIN G/F ,SHELL PLATED NICKEL, INSULATION BLACK	1	P2
2	CONN	HDMI A TYPE MALE PIN G/F ,SHELL PLATED NICKEL, INSULATION BLACK	1	P1
1	CABLE	UL20276 《30AWG (7/0.17S) *IP+EA+AL/MY》 *4+30AWG (7/0.17S) *5C +AEM(16/6/0.12AM) OD6.0 BLACK	1	3000mm
NO.	PART NO.	DESCRIPTION		
BILL OF MATERIAL				

A		INITIAL RELEASE		2017/7/26	
REVECN#		DATE		DATE	
Cnc Tech,LLC					
DRAWN		DATE		TITLE	
EDWIN LAI		07/26/17		HDMI A/M TO HDMI C/M CABLE	
DWN NO.		CUSTOMER P/N:		REV	
742-10010-00300				A	
CHECKED		DATE		CUSTOMER:	
W/IN. C		07/26/17			
APPROVAL				SHEET 1 OF 1	