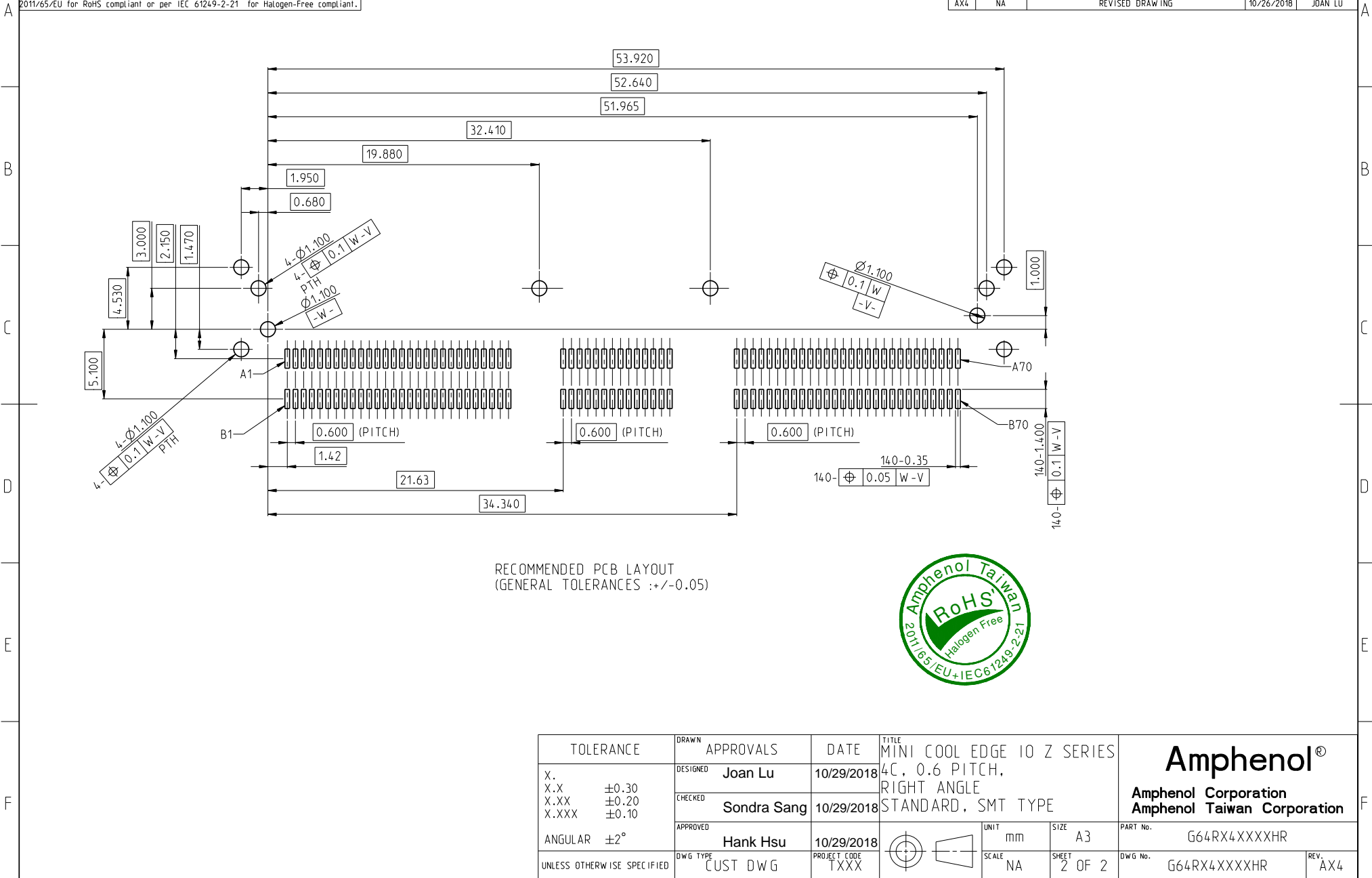


This document is the property of Amphenol Corporation and is delivered on the express condition that is not to be disclosed, reproduced or used, in whole or in part, for manufacture or sale by anyone other than Amphenol Corporation without its prior consent, and that no right is granted to disclose or to use any information in this document.

The marking on this product doesn't contain environmental hazardous materials per Material Specification SS-00259 for Sony GP compliant or per directive 2011/65/EU for RoHS compliant or per IEC 61249-2-21 for Halogen-Free compliant.

FOR REFERENCE ONLY

REVISIONS				
SYM	ECN No.	DESCRIPTION	DATE	BY
AX1	NA	INITIAL REVISION	09/05/2018	JOAN LU
AX2	NA	UPDATE CAGE'S DESIGN	09/17/2018	JOAN LU
AX3	NA	UPDATE CAGE'S DESIGN	10/19/2018	JOAN LU
AX4	NA	REVISED DRAWING	10/26/2018	JOAN LU



RECOMMENDED PCB LAYOUT
(GENERAL TOLERANCES :+/-0.05)



TOLERANCE	DRAWN	APPROVALS	DATE	TITLE				
X.				MINI COOL EDGE IO Z SERIES	Amphenol® Amphenol Corporation Amphenol Taiwan Corporation			
X.X ±0.30	DESIGNED	Joan Lu	10/29/2018	4C, 0.6 PITCH,				
X.XX ±0.20	CHECKED	Sondra Sang	10/29/2018	RIGHT ANGLE				
X.XXX ±0.10	APPROVED	Hank Hsu	10/29/2018	STANDARD, SMT TYPE	UNIT	mm	SIZE	A3
ANGULAR ±2°	DWG TYPE	CUST DWG	PROJECT CODE	TXXX	SCALE	NA	SHEET	2 OF 2
UNLESS OTHERWISE SPECIFIED							PART No.	G64RX4XXXXHR
							DWG No.	G64RX4XXXXHR
							REV.	AX4