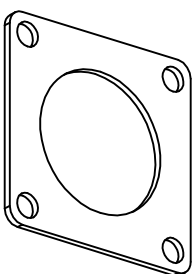
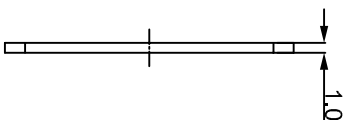
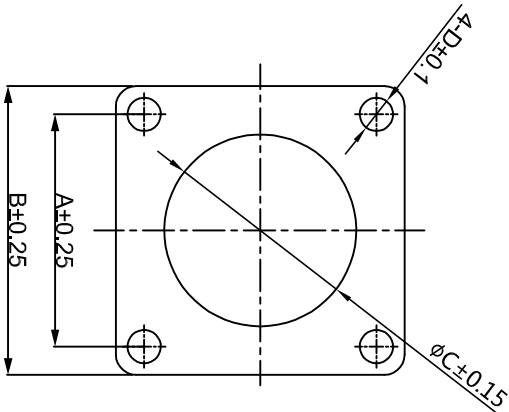


REVISIONS				
REV	ECO	DESCRIPTION	DATE	BY APPR
B1	-	RELEASED DRAWING	JAN-18-2014	ARROW TOMMY
B2	-	UPDATE DRAWING	APR-18-2017	FLAN TOMMY
B3	-	UPDATE DRAWING	May-19-17	Regan Tommy
B4	-	UPDATE TOLERANCE OF "D"	Jul/25/17	Tommy
B5	-	ADD PART NO. OF #8	May-8-2018	Flan Tommy



- NOTES:
1. MATERIAL : EPDM(BLACK). U194 V-0
 2. SEALING FOR WALL MOUNTING RECEPTACLES.
 3. SUITABLE FOR RTG-RTO-RTOW-RTS0.

PART NO:	SHELL	A	B	C	D
RTFD088	08	15.3	20.6	12.0	3.2
RTFD108	10	18.3	23.8	15.1	3.3
RTFD128	12	20.6	26.8	19.1	3.3
RTFD148	14	23.0	28.6	22.2	3.3
RTFD168	16	24.6	31.0	25.4	3.3
RTFD188	18	27.0	33.3	28.6	3.3
RTFD208	20	29.4	36.5	31.8	4.3
RTFD228	22	31.8	39.4	35.1	3.3
RTFD248	24	34.9	42.5	38.1	4.3

QUANTITY	PART NUMBER	DESCRIPTION	ITEM
MATERIALS LIST			

UNITED STATES SECURED
 1) All dimensions are in millimeters.
 2) Tolerances are as follows:
 1 Pt. DEC 2010 Fractions ±1/64
 3 Pt. DEC 2010 Angles ±1°

3) Note reference = **WARNING**

MATERIAL SPECIFICATIONS: CUSTOMER: Tommy | Date: 10/19/2018

PROCESS SPECIFICATIONS: INSTRUCTIONS, SUPERSEDES, SPECIFICATIONS AND PERFORMANCE DATA OF REPRODUCTION ARE LIAISON. ALL MANUFACTURING VARIATIONS.

SCALE: NONE

SIZE TYPE: B C- RTFDXMB

REVISION: B5

Amphenol
 Sine Systems - www.amphenol-sine.com
 44724 Morley Drive
 Clinton Township, MI 48036

ECO-MATE GASKET
 RT 360 SERIES

RTFDXB
 SHEET 1 OF 1