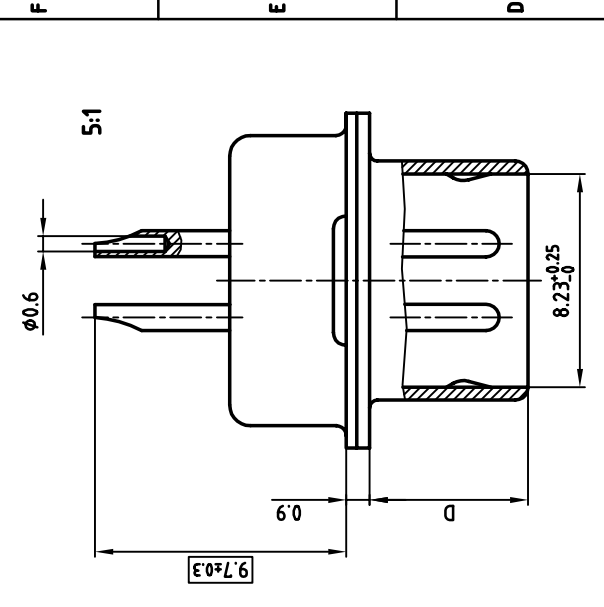
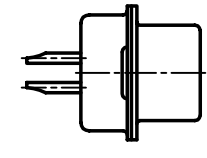
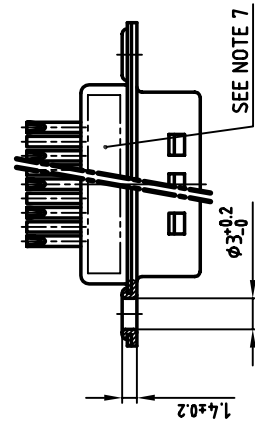
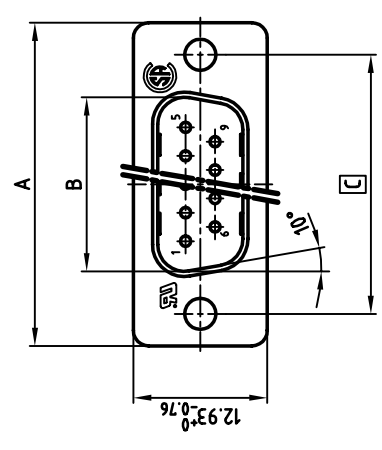


used for: D-SUB FILTER



NOTES:

1. METALSHELLS: STEEL; min. 320µ" TIN
2. INSULATORS: PBT GF UL 94 V-0, BLACK
3. CONTACTS: COPPER ALLOY
4. PLATING: min. 8µ" HARD GOLD OVER min. 50µ" NICKEL
5. SOLDER CUP ACCEPTS CABLE AWG 26
6. CAPACITANCE: 830pF ±20%
7. CONNECTOR IS PART MARKED: [PART-NO.] [CONEC] [Y/WW]
8. [] = CRITICAL DIMENSION



THIS DRAWING MAY NOT BE COPIED OR REPRODUCED IN ANY WAY, AND MAY NOT BE PASSED ON TO A THIRD PARTY WITHOUT WRITTEN PERMISSION.
 OWNERSHIP AND COPYRIGHT OF CONEC GMBH DO NOT ALTER CAD DRAWING BY HAND

rev.	description	date	name

tolerance		scale:	2:1 (5:1)
material:		material:	SEE NOTES
title:		title:	D-SUB FILTER MALE
2002	date	name	9-37pos. SOLDER CUP
26.03.	drawn	Pareil	
26.03.	appd.	E. Mickenbecker	
	norm	DIN 41852	
	d-old		

dwg no:	AutoCAD 2000	DIN-A
		3
		sh:1/1
part no:	24K1A229	SEE TABLE

POS.	A -0.76	B +0.25	C	D -0.3	Part NO.
9	31.19	16.79	25.00 ^{+0.12} _{-0.13}	6.12	24-1A11680X
15	39.52	25.12	33.30 ^{+0.15} _{-0.1}	6.12	24-1A11690X
25	53.42	38.84	47.04 ^{+0.13}	5.99	24-1A11700X
37	69.70	55.30	63.50 ^{+0.13}	5.99	24-1A11710X