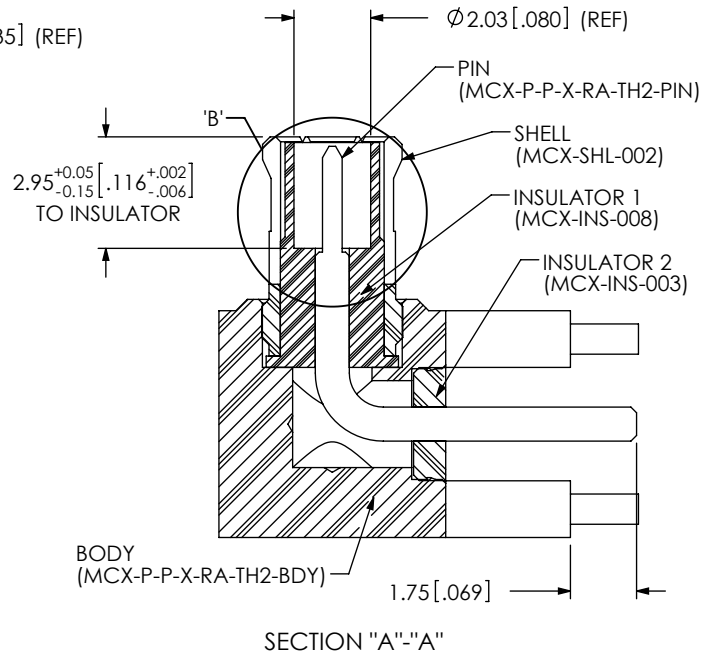
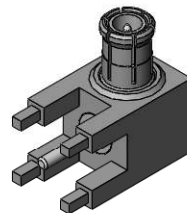


DESIGNED & DIMENSIONED
IN MILLIMETERS [INCHES]

B THIS PRODUCT MANUFACTURED
WITH LEAD-FREE PROCESSING



MCX-P-P-X-RA-TH2

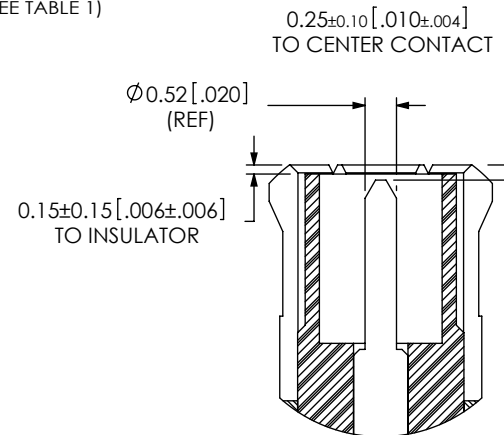
GENDER
-P: PLUG

TYPE
-P: PCB

PLATING SPECIFICATION
-H: HEAVY GOLD
(SEE TABLE 1)

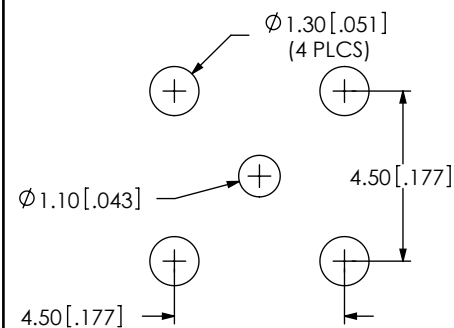
TERMINATION
-TH2: THROUGH HOLE

ORIENTATION
-RA: RIGHT ANGLE



DETAIL 'B'
SCALE 8 : 1

RECOMMENDED PCB LAYOUT



NOTES:

1. REPRESENTS A CRITICAL DIMENSION.
2. PUSHOUT FORCE FOR INSULATOR: 20 N [4.5 LB] MIN.
3. PRODUCT TO BE PACKAGED PER PACKAGING STANDARD CO-HD-WI-3040-M.
4. RoHS COMPLIANT.
5. -H: 0.000030" MIN. GOLD OVER 0.000050" MIN. NICKEL
-F: 0.000003" MIN. GOLD OVER 0.000050" MIN. NICKEL
6. ASSEMBLY PLATING DESIGNATIONS.
-H: (CENTER CONTACT)-H
(OUTER CONTACT)-F

C:\EnterpriseVault\DWG\MISC\MKTG\MCX-P-P-X-RA-TH2-MKT.SLDDRW

UNLESS OTHERWISE SPECIFIED,
DIMENSIONS ARE IN MILLIMETERS.
TOLERANCES ARE:
DECIMALS ANGLES
.X: ±0.3 [.01] 2°
.XX: ±0.13 [.005]
.XXX: ±0.051 [.0020]

PROPRIETARY NOTE
THIS DOCUMENT CONTAINS INFORMATION
CONFIDENTIAL AND PROPRIETARY TO
SAMTEC, INC. AND SHALL NOT BE REPRODUCED
OR TRANSFERRED TO OTHER DOCUMENTS OR
DISCLOSED TO OTHERS OR USED FOR ANY
PURPOSE OTHER THAN THAT WHICH IT WAS
OBTAINED WITHOUT THE EXPRESSED WRITTEN
CONSENT OF SAMTEC, INC.



520 PARK EAST BLVD, NEW ALBANY, IN 47150
PHONE: 812-944-6733 FAX: 812-948-5047
e-Mail: info@SAMTEC.com code: 55322

MATERIAL: DO NOT SCALE DRAWING SHEET SCALE: 5:1
CONTACT, BODY: BRASS
SHELL: COPPER ALLOY
DIELECTRIC: PTFE

DESCRIPTION:
MCX RIGHT ANGLE, THROUGH HOLE PLUG- 50 OHM
DWG. NO.
MCX-P-P-X-RA-TH2