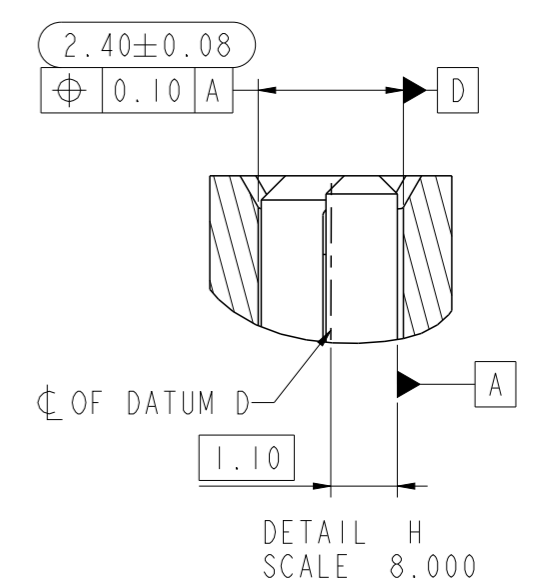
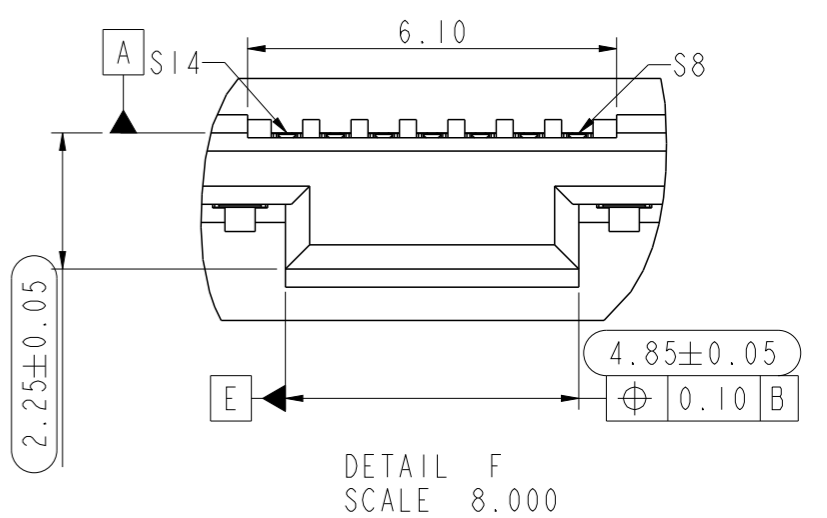
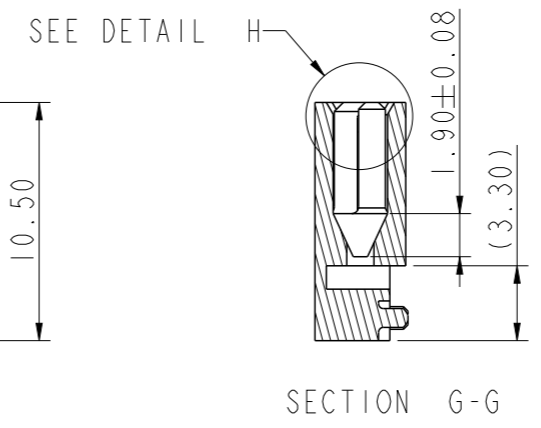
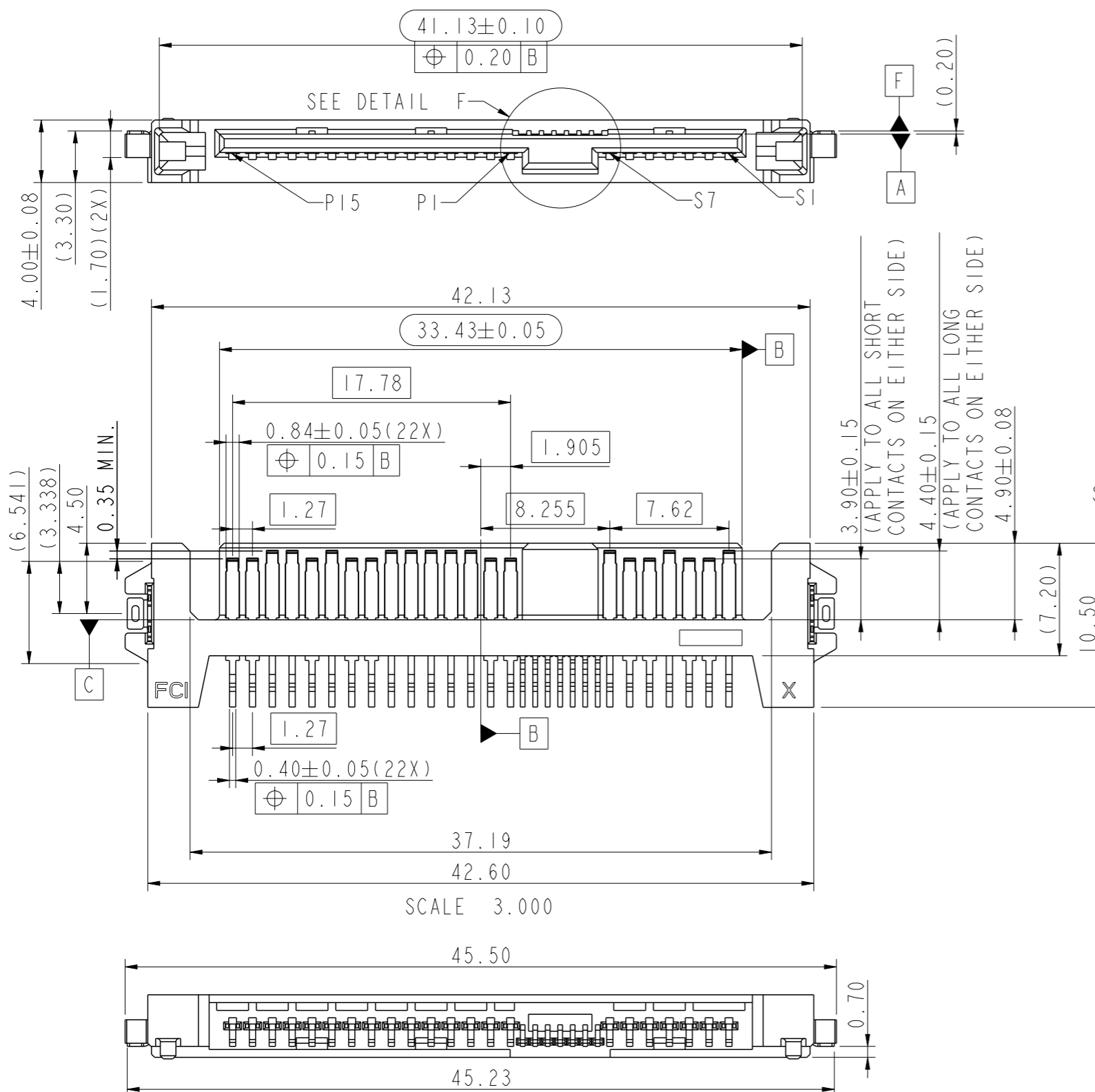


PRODUCT NO.
 10099439-002LF
 10099439-003C-TRLF
 10099439-004C-TRLF

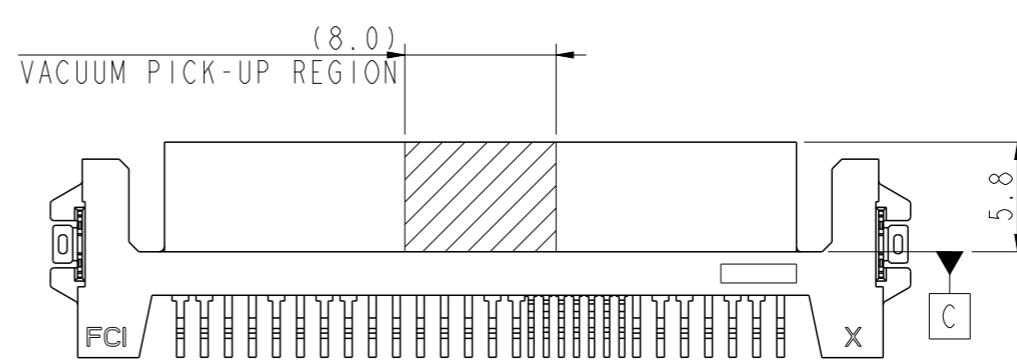
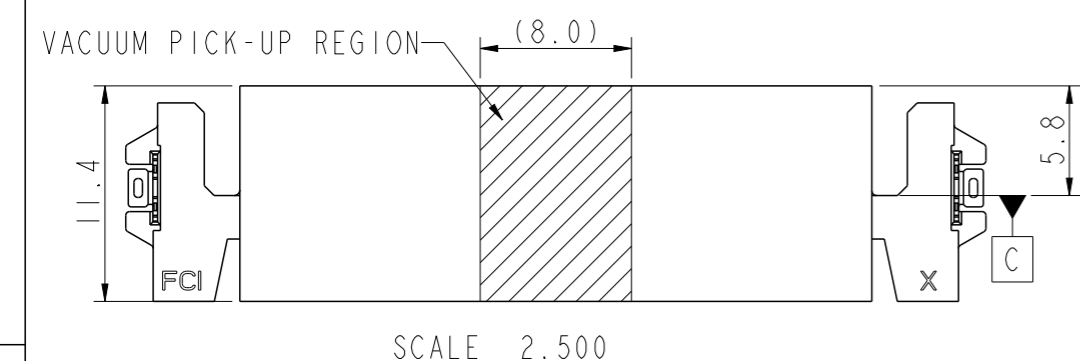
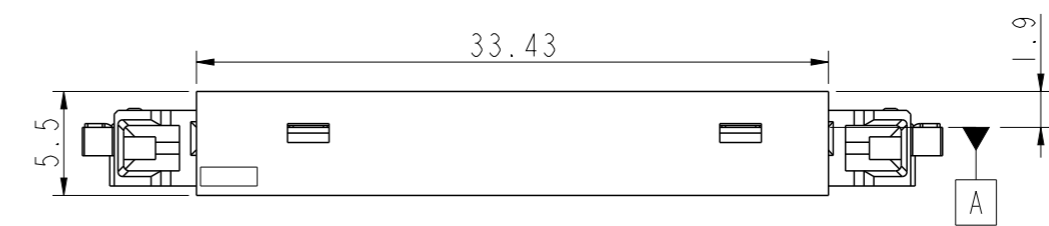
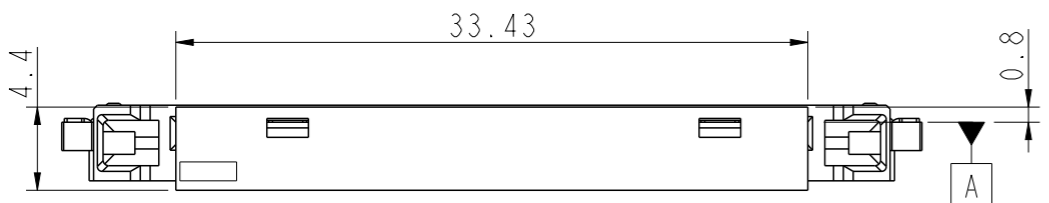
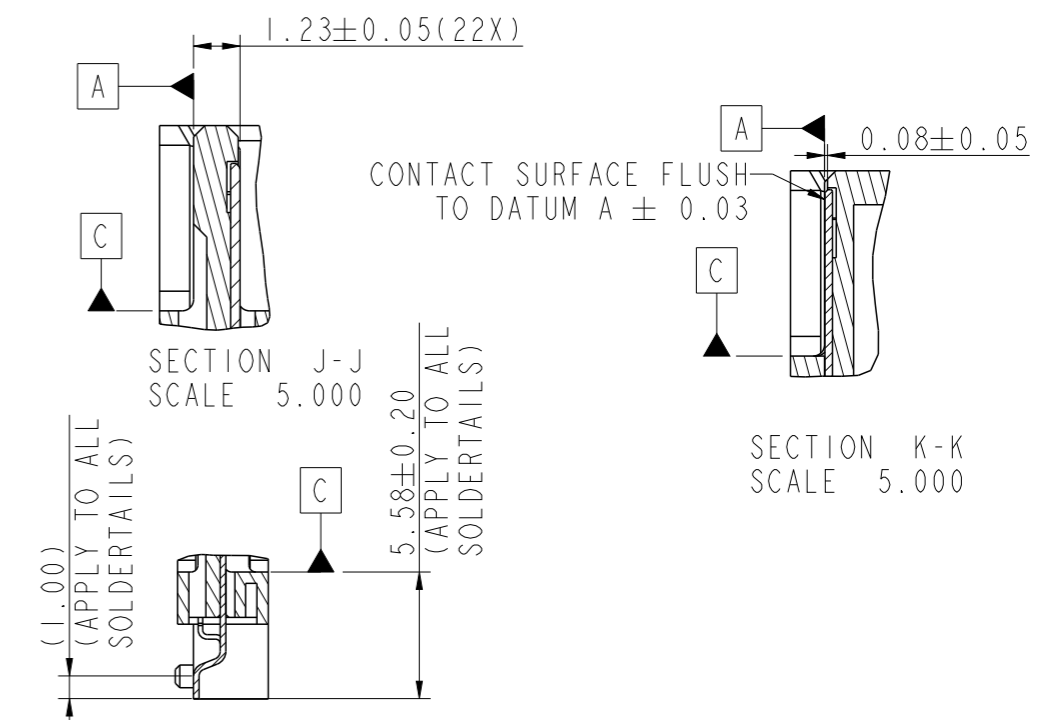
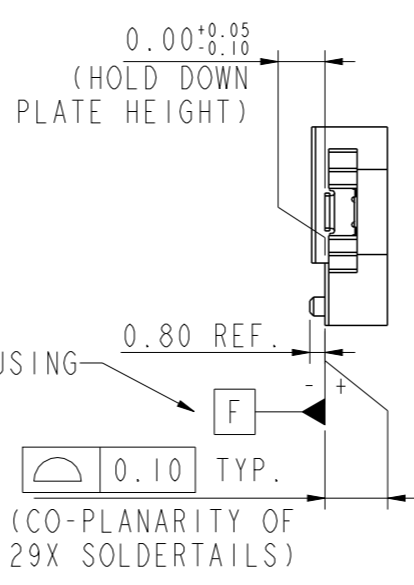
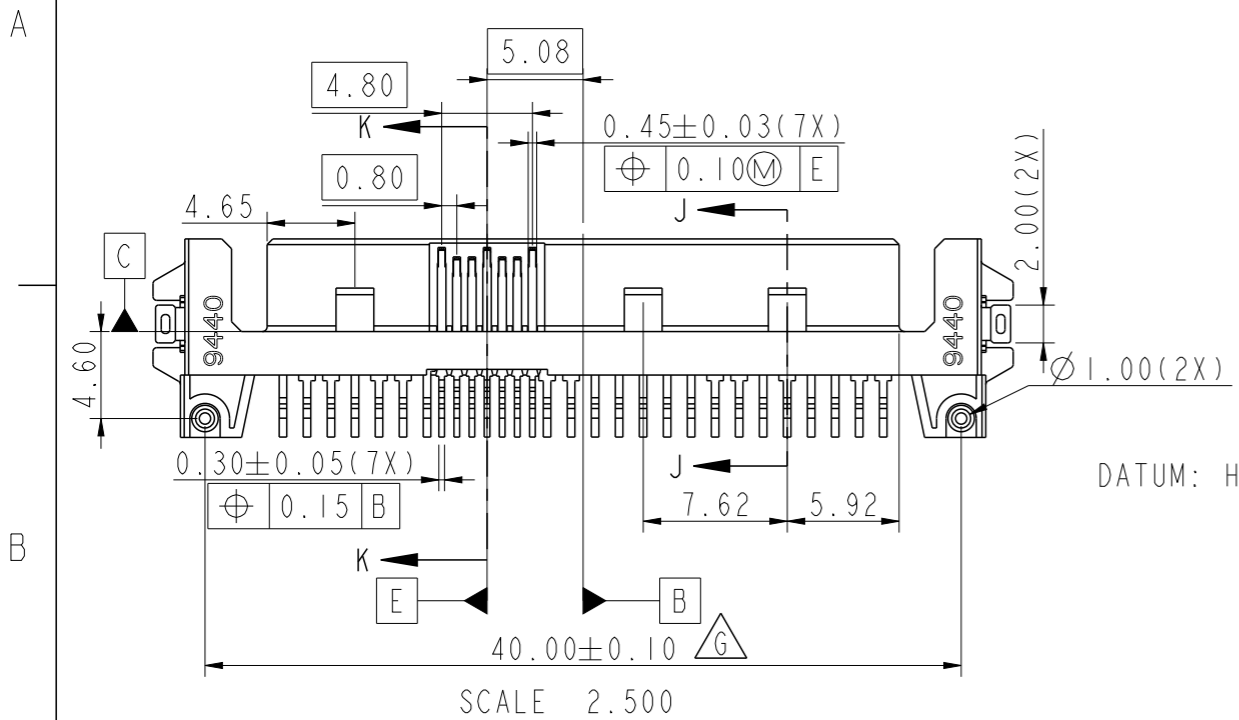


Amphenol FCI

© 2016 AFCI

spec ref	dr	Louis Ng	2010/05/01	projection	MM	size	A3	scale	2.000			
tolerance std	eng	Jeffrey Lim	2016/09/22			ecn no	ELX-S-24900-1	rel level	Released			
ASME Y14.5	chr	-	-									
surface linear angular	TOLERANCES UNLESS OTHERWISE SPECIFIED 0.X ±0.25 0.XX ±0.15 0.XXX ±0.050 0° ±2°	appr	Koon-Poh Tay	2016/10/06	product family							
		Amphenol FCI					title	SAS PLUG R/A			rev	G
							dwg no	10099439			cat. no.	Product - Customer Drw

PRODUCT NO.	WITH PICK-UP CAP	WITH ADHESIVE TAPE	PACKAGING
10099439-002LF	NO	NO	TRAY
10099439-002CLF	YES		TAPE & REEL
10099439-003C-TRLF			
10099439-004C-TRLF			



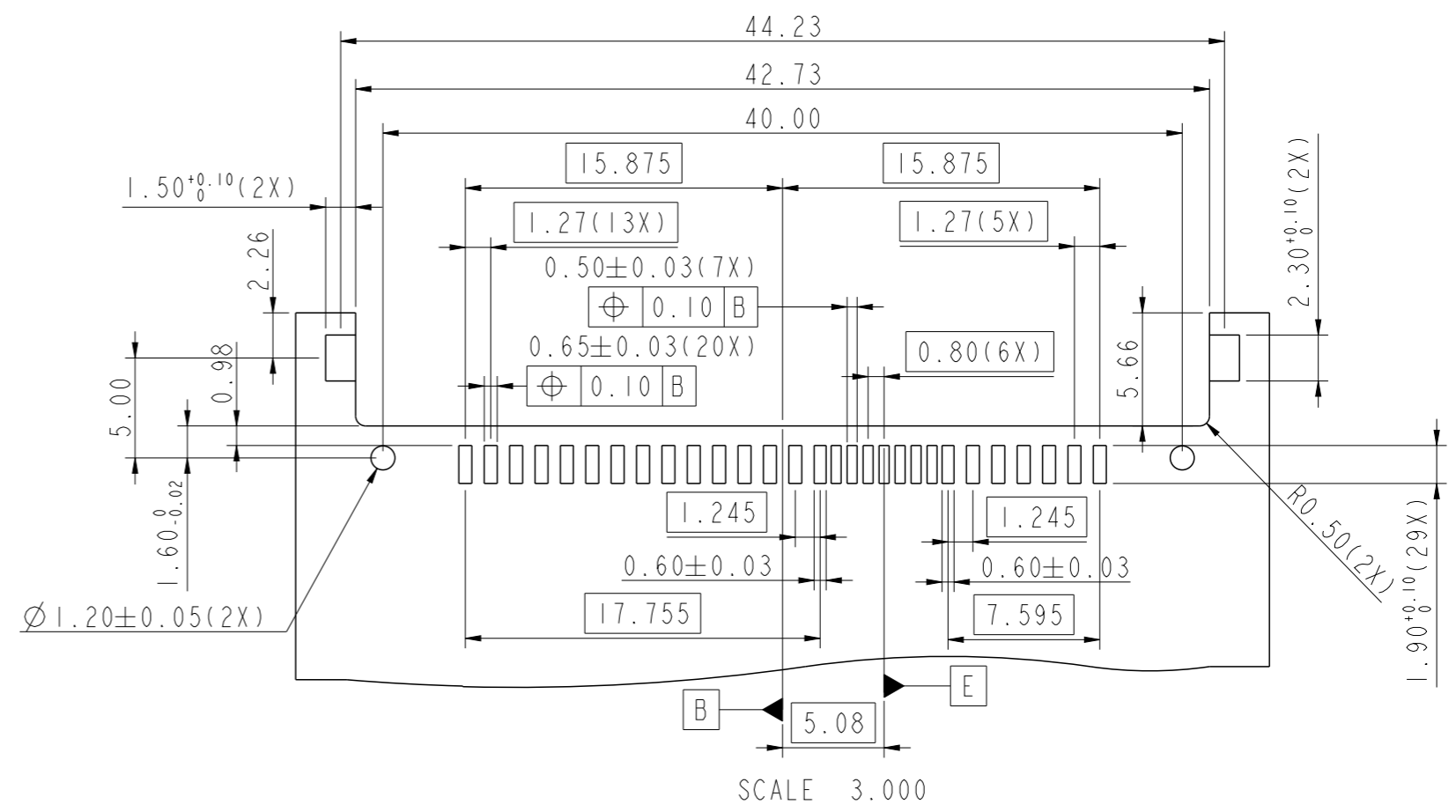
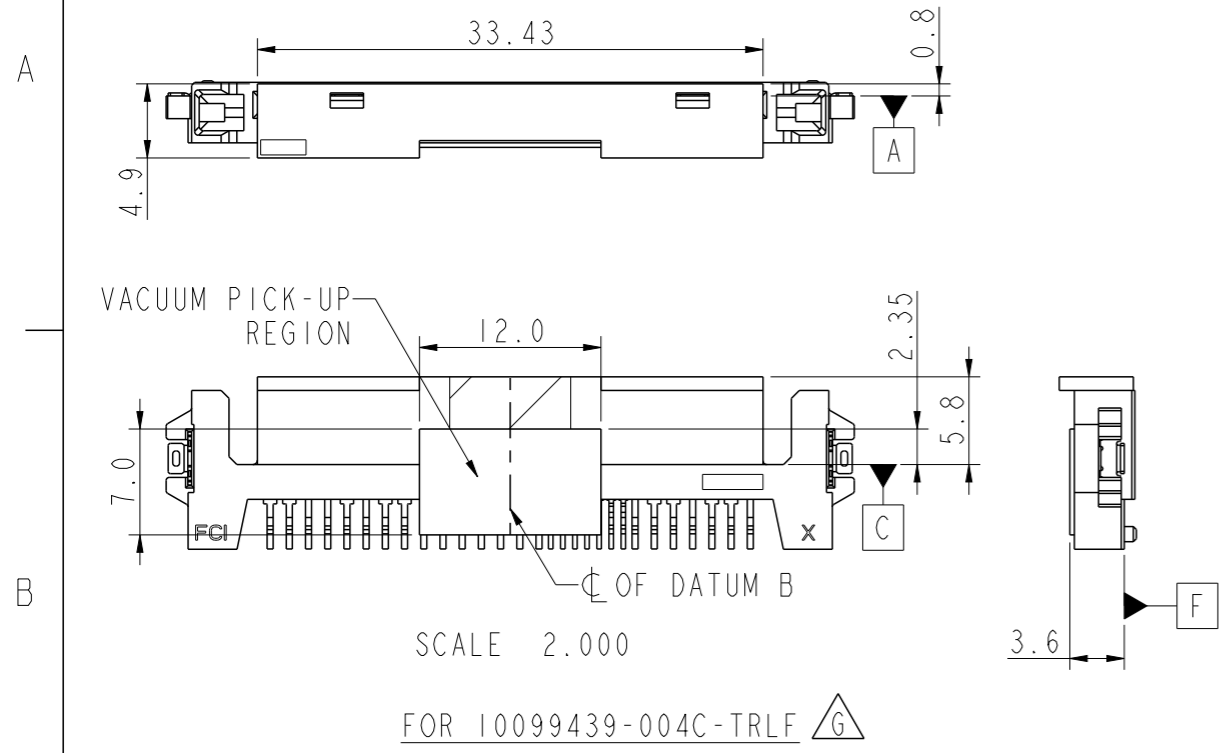
10099439-002 WITH PICK-UP CAP ATTACHED

10099439-003 WITH PICK-UP CAP ATTACHED

Amphenol FCI © 2016 AFCI

spec ref	dr	Louis Ng	2010/05/01	projection	MM	size	A3	scale	2.000
tolerance std	eng	Jeffrey Lim	2016/09/22			ecn no	ELX-S-24900-1	rel level	Released
ASME Y14.5	chr	-	-						
surface <input checked="" type="checkbox"/> linear	TOLERANCES UNLESS OTHERWISE SPECIFIED	0.X	±0.25	product family	SAS PLUG R/A TYPE ASSY, Z-HT. 0.20	dwg no 10099439	rev G		
		0.XX	±0.15						
		0.XXX	±0.050						
	angular	0°	±2°	cat. no.	Product - Customer Drw	sheet 2 of 3			

PRODUCT NO.
SEE TABLE



RECOMMENDED SMT PAD DIMENSIONS

- NOTES:
- MATERIAL:
HOUSING & CAP: HIGH TEMPERATURE THERMOPLASTIC, BLACK, UL94V-0
 $\triangle G$ ADHESIVE TAPE: POLYIMIDE
CONTACT & HOLD DOWN: COPPER ALLOY
 - FINISH:
CONTACT: 1.27um MIN. Ni UNDERPLATE OVERALL,
1.91um MIN. 100% MATTE Sn(LEAD-FREE) ON SOLDER TAIL,
0.76um MIN. Au ON CONTACT AREA
HOLD DOWN: 1.91um MIN. 100% MATTE Sn(LEAD-FREE) OVER
1.27um MIN. Ni UNDERPLATE OVERALL
 - RECOMMENDED PCB THICKNESS: 1.00mm
 - PRODUCT SPECIFICATION: GS-12-282
 - PACKAGING SPECIFICATION: GS-14-952(TRAY); GS-14-1038(TAPE & REEL)
 - THIS PRODUCT MEETS EUROPEAN UNION DIRECTIVES AND OTHER COUNTRY REGULATIONS AS DESCRIBED IN GS-47-0004
 - THE HOUSING WILL WITHSTAND EXPOSURE TO 260°C PEAK TEMPERATURE FOR 10 SECONDS IN A CONVECTION, INFRA-RED OR VAPOR PHASE REFLOW OVEN
 - A SYMBOL $\triangle G$ WILL BE NEXT TO ANY DIMENSION, VIEW OR NOTE WHICH HAS BEEN MODIFIED WITH THE CURRENT DRAWING REVISION

spec ref	dr	Louis Ng	2010/05/01	projection	MM	size	A3	scale	1.000
tolerance std	eng	Jeffrey Lim	2016/09/22		← →	ecn no	ELX-S-24900-1	rel level	Released
ASME Y14.5	chr	-	-						
surface	appr	Koon-Poh Tay	2016/10/06	SAS PLUG R/A			dwg no	10099439	rev
linear	Amphenol FCI			TYPE ASSY, Z-HT. 0.20			Product - Customer Drw		
0.X				±0.25	cat. no.	sheet 3 of 3			
0.XX				±0.15					
0.XXX	±0.050								
angular	0°	±2°							

Amphenol FCI

© 2016 AFCI