

## Base strip - EMSTB 2,5/15-GF - 1900206

Please be informed that the data shown in this PDF Document is generated from our Online Catalog. Please find the complete data in the user's documentation. Our General Terms of Use for Downloads are valid (<http://phoenixcontact.com/download>)

Header, Nominal current: 12 A, Rated voltage (III/2): 320 V, Number of positions: 15, Pitch: 5 mm, Color: green, Contact surface: Tin, Assembly: Press-in



The figure shows a 10-position version of the product

### Product Features

- Press-in tools available on request
- Pin strips with ERNI-PRESS flexible press-in zone
- Processing according to EN 60352-5



### Key commercial data

Packing unit	1 pc
Minimum order quantity	50 pc
Weight per Piece (excluding packing)	8.63 GRM
Custom tariff number	85366990
Country of origin	Germany

### Technical data

#### Dimensions

Length	12 mm
Pitch	5 mm
Dimension a	70 mm
Pin dimensions	1,7 mm
Hole diameter	1.75 mm

#### General

Range of articles	EMSTB 2,5/..-GF
Insulating material group	IIIa
Rated surge voltage (III/3)	4 kV

## Base strip - EMSTB 2,5/15-GF - 1900206

### Technical data

#### General

Rated surge voltage (III/2)	4 kV
Rated surge voltage (II/2)	4 kV
Rated voltage (III/3)	250 V
Rated voltage (III/2)	320 V
Rated voltage (II/2)	400 V
Connection in acc. with standard	EN-VDE
Nominal current I <sub>N</sub>	12 A
Maximum load current	12 A
Insulating material	PBT
Inflammability class according to UL 94	V0
Color	green
Number of positions	15

### Classifications

#### eCl@ss

eCl@ss 4.0	272607xx
eCl@ss 4.1	27260701
eCl@ss 5.0	27260701
eCl@ss 5.1	27260701
eCl@ss 6.0	27260704
eCl@ss 7.0	27440402
eCl@ss 8.0	27440402

#### ETIM

ETIM 3.0	EC001121
ETIM 4.0	EC002637
ETIM 5.0	EC002637

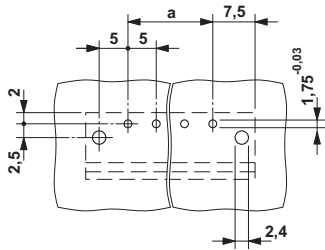
#### UNSPSC

UNSPSC 6.01	30211810
UNSPSC 7.0901	39121409
UNSPSC 11	39121409
UNSPSC 12.01	39121409
UNSPSC 13.2	39121409

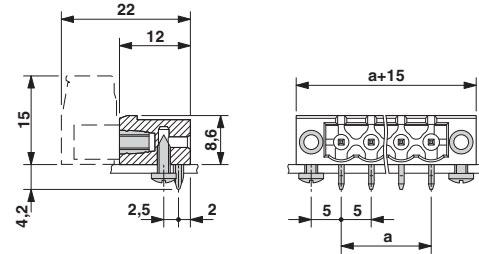
### Drawings

# Base strip - EMSTB 2,5/15-GF - 1900206

Drilling diagram

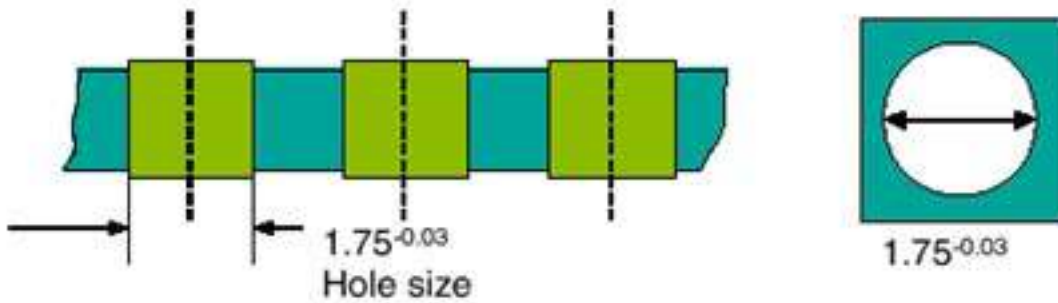


Dimensioned drawing



Drilling diagram

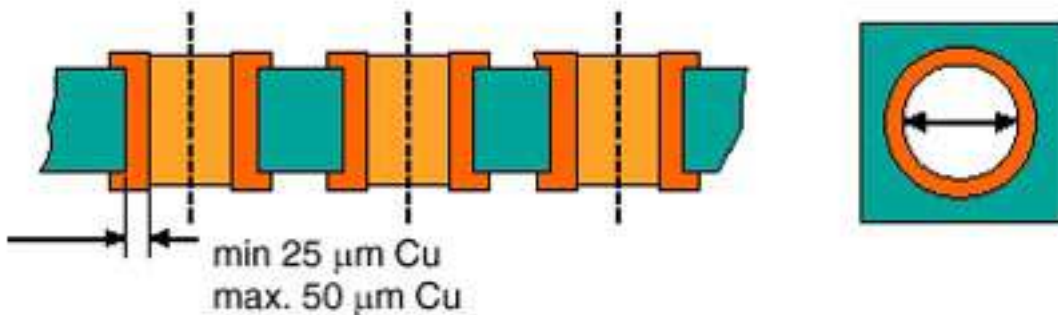
**Bore hole in the basic material,**  
mostly epoxy glass fabric FR4 or EP-GC



**Bore hole with Cu ferrule**

Drilling diagram

**Bore hole with Cu ferrule**



## Base strip - EMSTB 2,5/15-GF - 1900206

Drilling diagram

### Plated-through bore hole with Sn/SnPb

