

# SWT65 SPECIFICATION

CA703-01-01E

ITEMS		MODEL	SWT65-522			SWT65-525			SWT65-5FF		
			CH1	CH2	CH3	CH1	CH2	CH3	CH1	CH2	CH3
1	NOMINAL OUTPUT VOLTAGE	V	+5	+12	-12	+5	+12	-5	+5	+15	-15
2	MIN. OUTPUT CURRENT	A	0.3	0	0	0.3	0	0	0.3	0	0
3	MAX. OUTPUT CURRENT	A	6	2.5	0.5	6	2.5	0.5	6	1.8	0.5
4	PEAK OUTPUT CURRENT	A	-	-	-	-	-	-	-	-	-
5	MAX. OUTPUT POWER	W	66			62.5			64.5		
6	EFFICIENCY (TYP) (* 1)	-	72%								
7	INPUT VOLTAGE RANGE (* 2)	-	AC85 -132V , 170-265V(auto selectable), 47-63Hz								
8	INPUT CURRENT (TYP) (* 1)	-	1.71A(Vin=100VAC) / 0.86A(Vin=200VAC)								
9	INRUSH CURRENT (TYP)	-	30A / 100VAC, 30A / 200VAC ( cold start , Ta=25°C)								
10	OUTPUT VOLTAGE	-	CH1 +5V fixed, CH2.3 fixed Shipment condition: CH1: ±1% CH2(+12V): ±3% ; CH2(+15V):±5% CH3: ±5%								
11	MAX. RIPPLE & NOISE (* 3)	-	±5V: 120mV; ±12V: 150mV; ±15V: 150mV								
12	MAX. LINE REGULATION (*3,4)	-	CH1: 1%, CH2: 2%, CH3: 1%								
13	MAX. LOAD REGULATION (*3,5)	-	CH1: 2%, CH2: 4%, CH3: 2%								
14	MAX. TEMPERATURE (*3,6)	-	0.04%/°C								
15	OVER CURRENT (* 7)	-	Automatic recovery, O.C.P point : 105% ~								
16	OVER VOLTAGE (* 8)	-	6V ~ ( CH1 only )								
17	HOLD - UP TIME (TYP) (* 1)	-	17ms (Input 100 VAC)								
18	OPERATING (* 9)	-	Convection cooling 0-50°C:100% load; 60°C:70% load								
19	OPERATING HUMIDITY	-	30%~90%RH								
20	STORAGE TEMPERATURE	-	-20°C ~ +85°C								
21	STORAGE HUMIDITY	-	10%~95%RH								
22	COOLING	-	Convection cooling								
23	EMI	-	Conform to FCC-B, VCCI-2, EN55022B								
24	WITHSTAND VOLTAGE	-	I/P-O/P: 3kVAC(20mA), I/P-FG: 2.5kVAC(20mA), O/P-FG: 500VAC(100mA) for 1min								
25	ISOLATION RESISTANCE	-	More than 100MΩ at Ta=25°C and 70%RH, Output - FG 500VDC								
26	VIBRATION	-	10 - 55Hz Amplitude ( sweep 1min ) Less than 19.6m/s <sup>2</sup> X ,Y ,Z 1Hr each								
27	SHOCK	-	Less than 196.1m/s <sup>2</sup>								
28	OUTPUT GROUNDING	-	All channels common ground (2 terminals)								
29	SAFETY	-	Conform to UL60950-1, CSA60950-1, EN60950-1, DENAN								
30	WEIGHT	-	350g								
31	SIZE (W*D*H)	m/m	88.9 x 152.4 x 45.0								
		inch	3.50 x 6.00 x 1.77 ( 3.15 x 4.80 mounting hole Φ 3.5mm )								

NOTES:

- \*1: At 100VAC, 200VAC and MAX. OUTPUT POWER (Convection cooling), Ta=25°C.
- \*2: For cases where conformance to various safety specs (UL,CSA, EN) are required to be described as 100-120VAC, 200-240VAC, 50/60 Hz on name plate.
- \*3: Please refer to Fig A for measurement determination of line & load regulation and output ripple voltage. (Measure with JEITA-RC9131 probe)
- \*4: From 85-132VAC / 170-265VAC, constant load.
- \*5: From Min. load - Full load ( Maximum power ), constant input voltage.
- \*6: From 0°C ~ +50°C, constant input voltage and load.
- \*7: Current limiting with automatic recovery. Avoid to operate over load or dead short for more than 30 seconds.
- \*8: Over voltage clamping by zener diode
- \*9: At standard mounting method, Fig B.

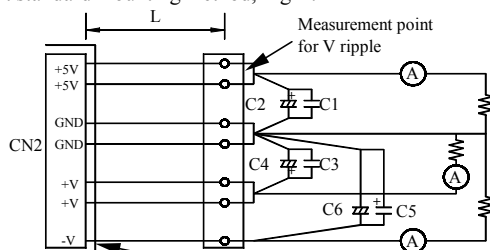


Fig. A  
 L: 150mm AWG#18  
 C1,C3,C5: Film Cap 0.1μF  
 C2,C4,C6: Elec. Cap 100μF  
 Bandwidth of scope:100MHz

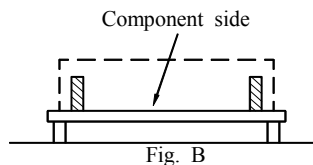


Fig. B

**SWT65**

OUTPUT DERATING

CA703-01-03A

Ta (°C)	LOADING CONDITION (%)				
	Mounting A	Mounting B	Mounting C	Mounting D	Mounting E
0	100	100	100	100	100
20	100	100	100	100	100
40	100	90	80	90	90
50	100	80	80	80	80
60	70	60	60	60	60

