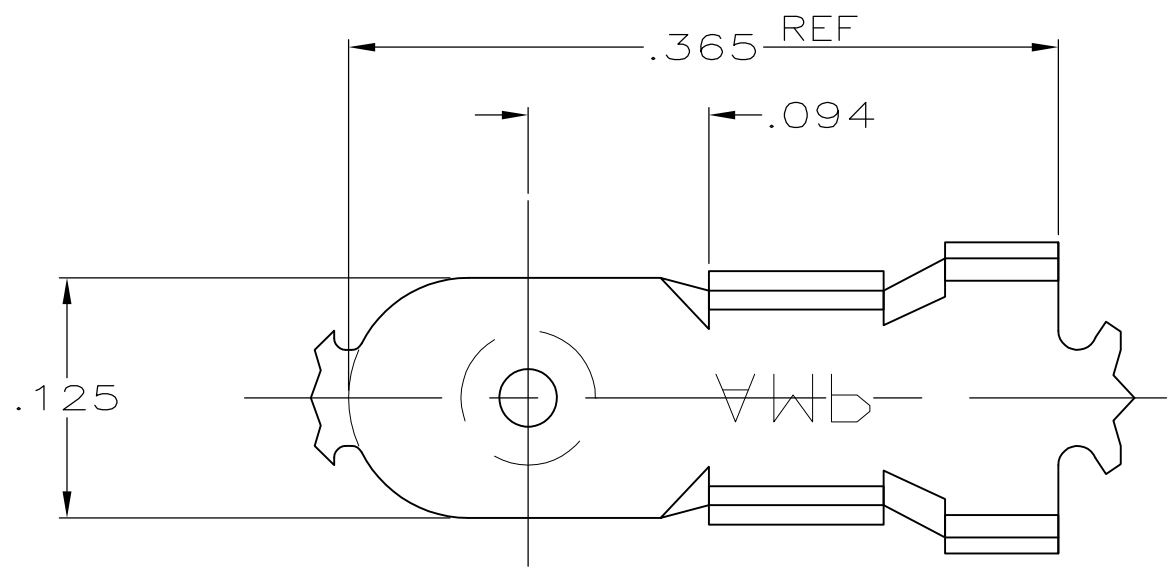
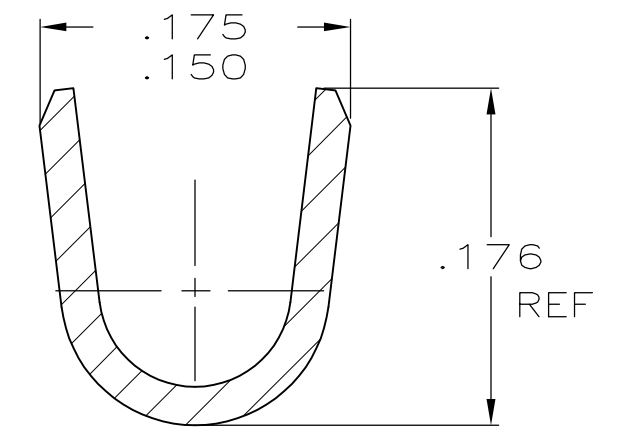
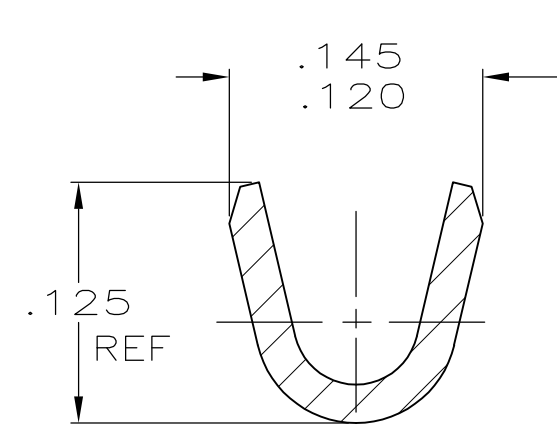
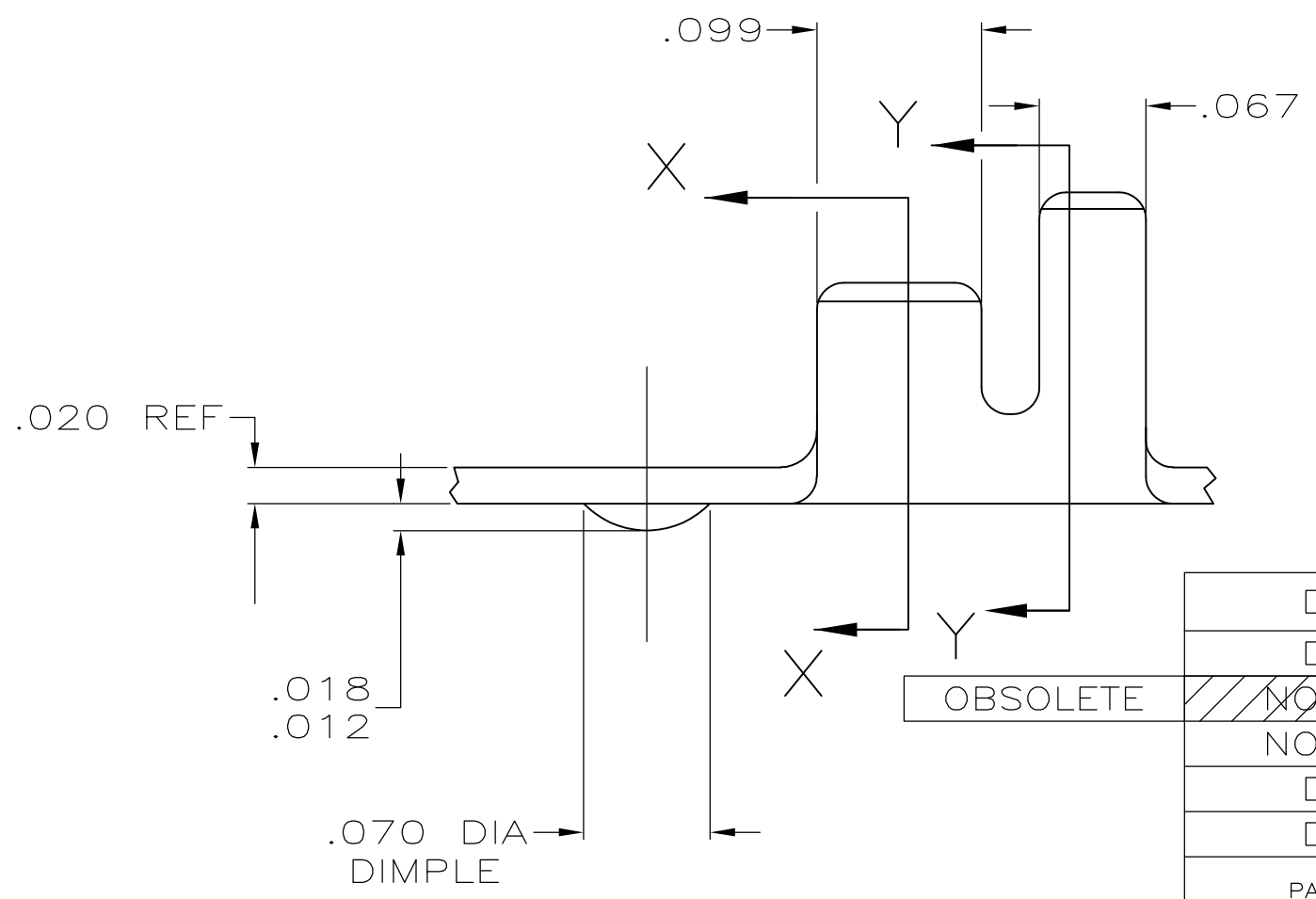


THIS DRAWING IS UNPUBLISHED. RELEASED FOR PUBLICATION
 © COPYRIGHT - By - ALL RIGHTS RESERVED.

LOC	DIST	REVISIONS			
P	LTR	DESCRIPTION	DATE	DWN	APVD
AF	50	AF5	REVISED PER ECO 11-018422	09SEP11	JR PD



- 1 CONTINUOUS STRIP ON REELS.
- 2 WIRE SIZE IS #20-#16 AWG.
- 3 INSULATION RANGE IS .090-.130 DIA.
- 4 .000080 MIN TIN PLATE.
- 5 COPPER FLASH BASE WITH .000005 MIN GOLD PLATE OVER .000030 MIN NICKEL UNDERPLATE.
- 6 .000100 MIN NICKEL PLATE
- 7 PRELIMINARY - NOT FOR PRODUCTION



DIMPLE	FINISH	MATERIAL	PART NUMBER
DIMPLE	-	T4 PHOS BRONZE	40990-5
DIMPLE	6	TEMPER 3 STEEL	40990-4
NO DIMPLE	-	TEMPER 3 STEEL	40990-3
NO DIMPLE	5	TEMPER 3 STEEL	40990-2
DIMPLE	4	TEMPER 3 STEEL	40990-1
DIMPLE	-	ANNEALED UNS S43000 STAINLESS STEEL	40990

THIS DRAWING IS A CONTROLLED DOCUMENT.		DWN MICHAEL S. FEHER 26JUL2001	TE Connectivity	
DIMENSIONS: INCHES		CHK GARY PORTA 26JUL2001		
TOLERANCES UNLESS OTHERWISE SPECIFIED:		APVD GARY PORTA 26JUL2001	NAME	
0 PLC ± - 1 PLC ± - 2 PLC ± - 3 PLC ± .015 4 PLC ± - ANGLES ± -		PRODUCT SPEC	WELD TAB	
MATERIAL SEE TABLE		FINISH SEE TABLE	APPLICATION SPEC	RESTRICTED TO
		WEIGHT -	SIZE A3	CAGE CODE 00779
		DRAWING NO C-40990		SCALE 10:1
		CUSTOMER DRAWING		SHEET 1 OF 1
				REV AF5