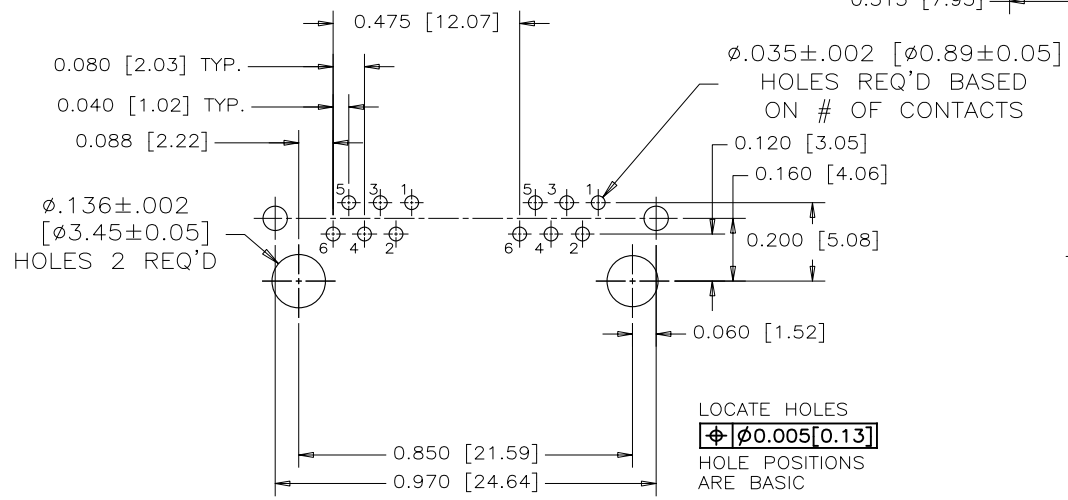
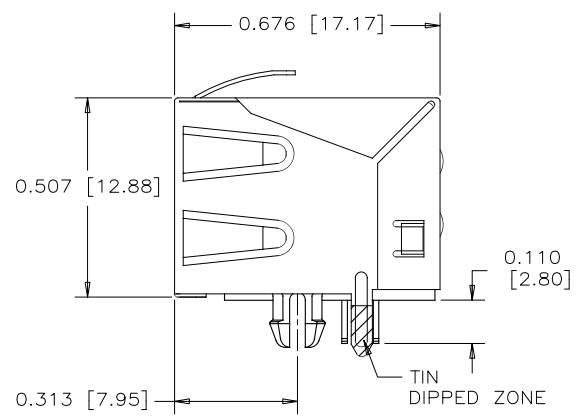
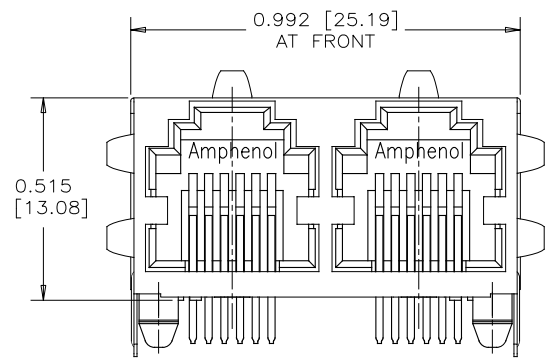
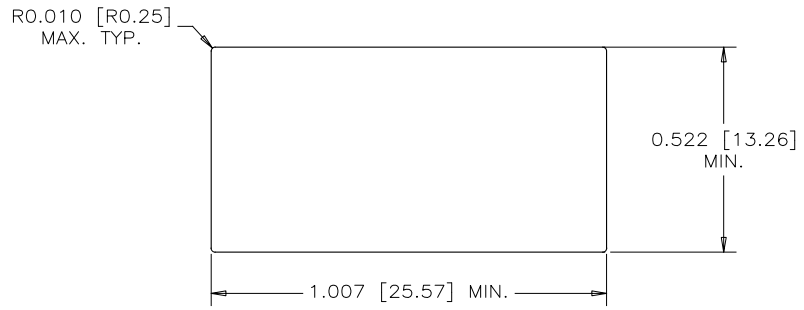


REV	DESCRIPTION, ECN, EAR NO.	DATE	APP'D
A	PROPOSAL DRAWING	MAR15/21	KELVIN.T



RECOMMENDED P.C.B. LAYOUT
(COMPONENT SIDE OF BOARD)



RECOMMENDED PANEL CUTOUT

MATERIALS:

- PLASTIC HOUSING: HIGH TEMPERATURE RESISTANT NYLON
UL FLAMMABILITY RATING 94V-0.
COLOR: BLACK
- CONTACTS: PHOSPHOR BRONZE
- CONTACT PLATING: SELECTIVE GOLD PLATING ON MATING SURFACES
SEE AMPHENOL PART NUMBER FOR DETAIL.
50 μ " [1.27 MICRONS] MINIMUM NICKEL UNDERPLATE
100 μ " [2.54 MICRONS] MINIMUM MATTE TIN ON CONTACT TAILS.
- SHIELD: COPPER ALLOY; NICKEL PLATED WITH TIN
DIPPED PCB TAILS.

PART NUMBER: RJE01-XX2-02

GOLD PLATING

- 1 = 6 μ "
- 6 = 50 μ "
- G = 15 μ "
- J = 30 μ "

CONTACTS:

- 2 = 2 CONTACTS LOADED IN POSITION 3 & 4.
- 4 = 4 CONTACTS LOADED IN POSITION 2 TO 5.
- 6 = 6 CONTACTS LOADED IN POSITION 1 TO 6.

UNLESS SPECIFIED OTHERWISE	DRAWN STEVE.X	MAR15/21	Amphenol Canada Corp.			
PRIMARY UNITS INCHES	CHECKED L.CHAN	MAR15/21	Commercial Products			
SECONDARY MILLIMETERS	M.E. APP'D		MODULAR JACK, 2 PORT, 6 POSITION, CONTACTS OPTION, SHIELDED WITH TOP & SIDE EMI TABS-ROHS COMPLIANT			
REFERENCE IN PARENTHESES	G.A. APP'D					
GENERAL TOLERANCES	DWG APP'D		DWG NO.	P-RJE01-XX2-02		
1 DECIMAL PLACE ± 0.025	ENG. REL. NO.		REF.			REV A
2 DECIMAL PLACES ± 0.02	THIRD ANGLE PROJECTION		DO NOT SCALE DRAWING			
3 DECIMAL PLACES ± 0.015			CODE ID NO. 03554	DWG SIZE C	SCALE NA	SHEET 1 OF 1
ANGULAR DEGREES $\pm 1^\circ$						

THIS DOCUMENT CONTAINS PROPRIETARY INFORMATION AND SUCH INFORMATION MAY NOT BE DISCLOSED TO OTHERS FOR ANY PURPOSE OR USED FOR MANUFACTURING PURPOSES WITHOUT WRITTEN PERMISSION FROM AMPHENOL CANADA CORP.