



Electrical Specifications

Cutoff Frequency (Fc): 400 MHz
Passband: 400-2500 MHz
Passband Insertion Loss : 2.0dB Max.
Passband Return Loss: 15dB Min.
Rejection: 50 dB Min. @ 0-260 MHz

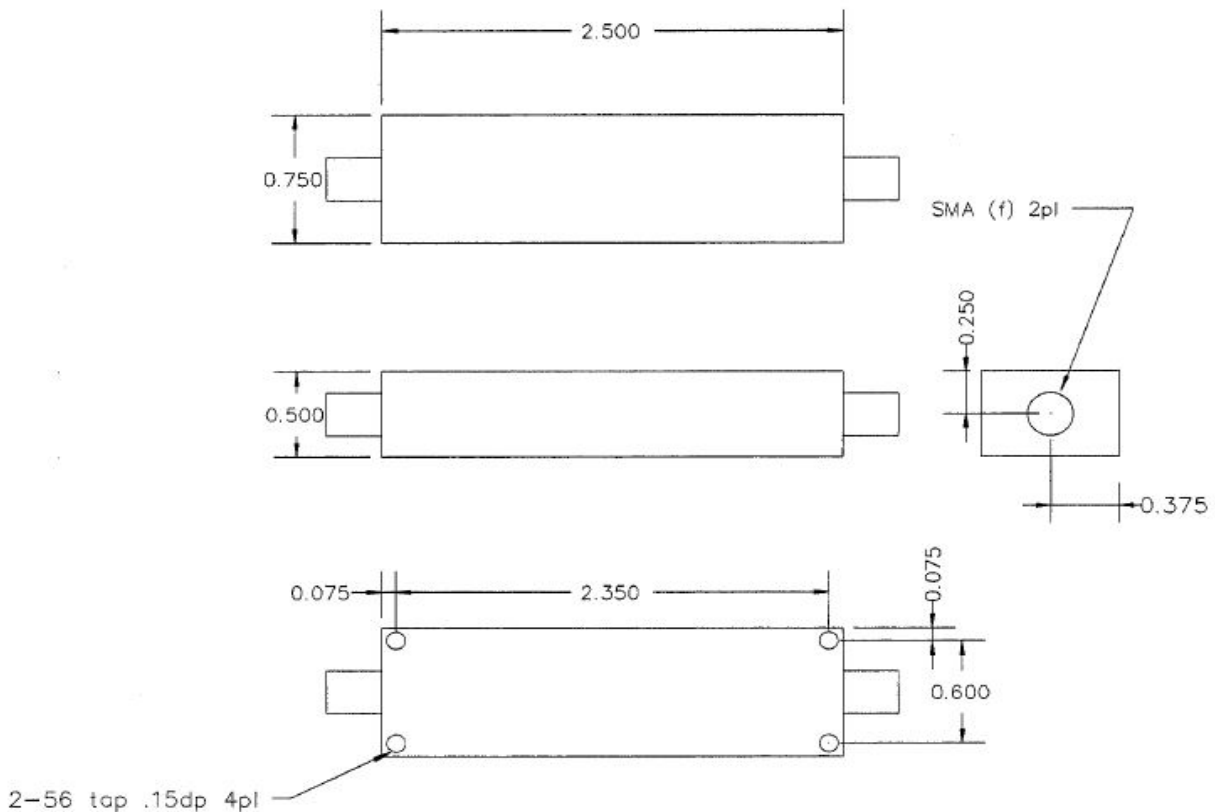
Mechanical

Connector Type: SMA(F) & SMA(M)
Dimensions: 2.5" x 0.75" x 0.5"

Environmental

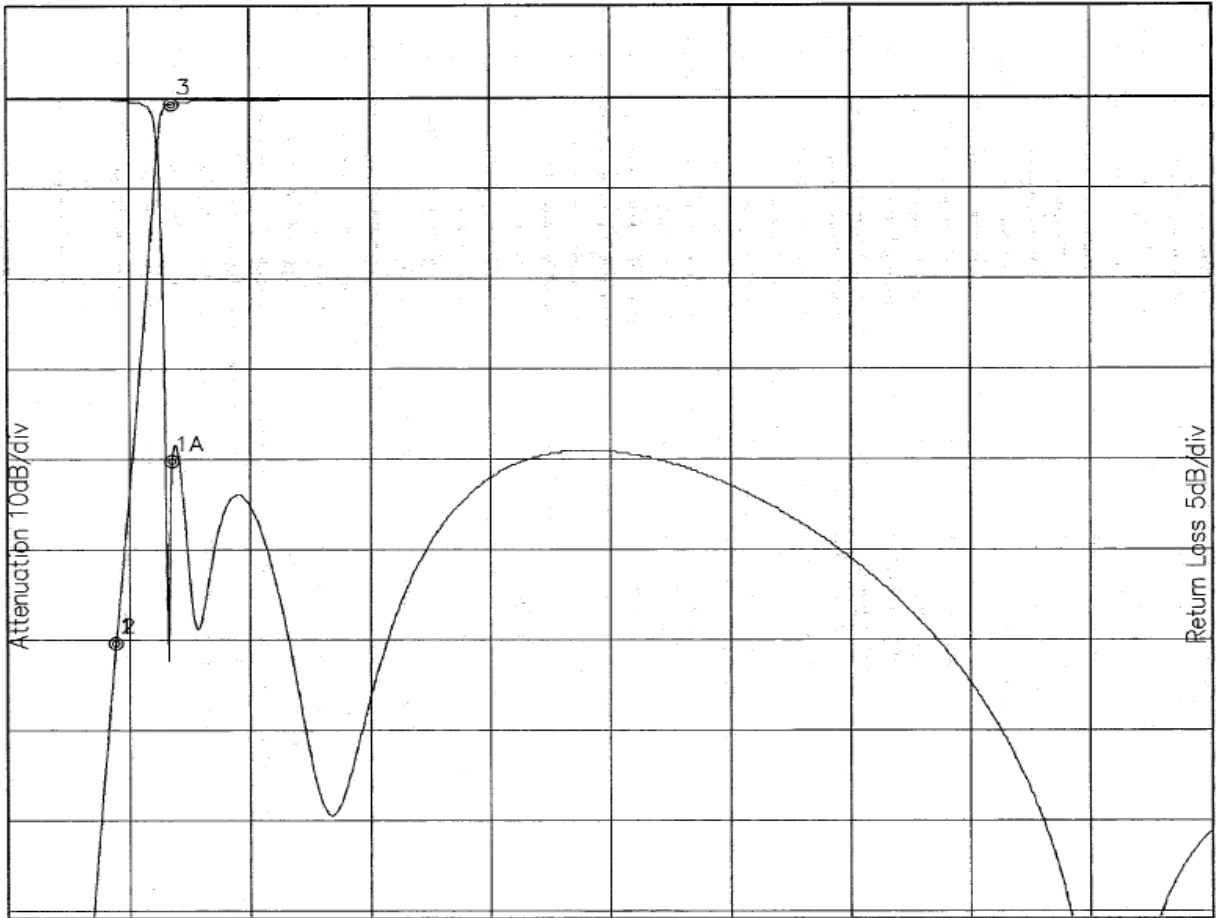
Operating Temperature: -25°C to +70°C
Storage Temperature: -60°C to +90°C
Shock: 10 G. 11ms
Vibration: 10 G. 5 to 200Hz

Outline Drawing:





Response Plot :



Attenuation Start: 0.30Hz Stop: 3.0GHz

Return Loss Start: 0.30Hz Stop: 3.0GHz

Marker 1 Freq 261.71MHz Atten -60.461dB

Marker 1A Freq 402.26MHz Ret Loss -20.122dB

Marker 2 Freq 261.71MHz Atten -60.461dB

Marker 3 Freq 402.26MHz Atten -0.564dB