

THIS DRAWING IS UNPUBLISHED.

RELEASED FOR PUBLICATION

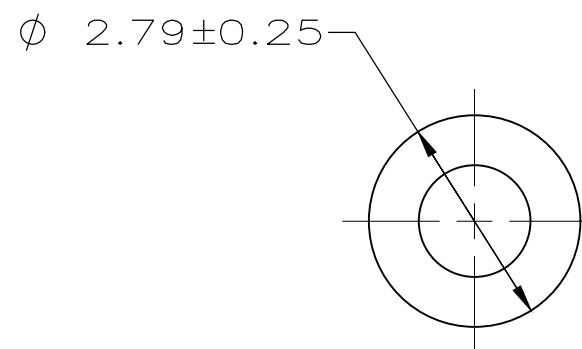
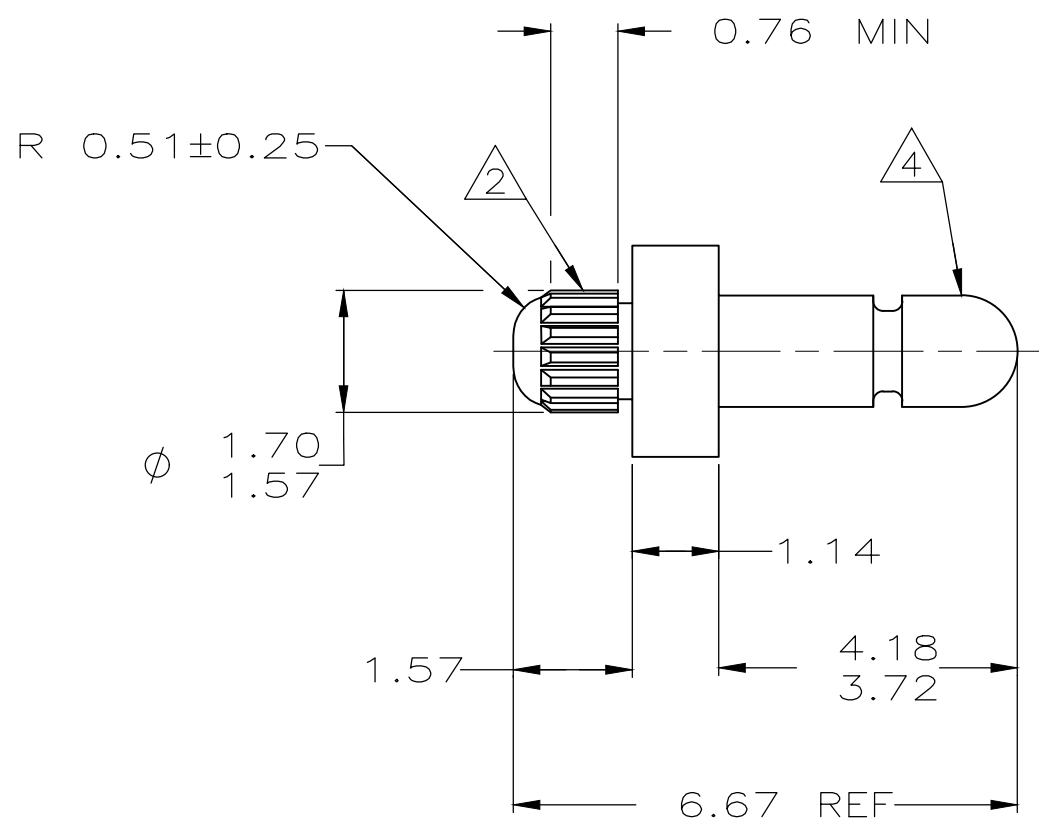
© COPYRIGHT - TE Connectivity

ALL RIGHTS RESERVED.

REVISIONS

P	LTR	DESCRIPTION	DATE	DWN	APVD
	H2	REVISED PER ECR-19-008948	13MAY20	J.P	D.Z

- ① 0.00381 MIN BRIGHT TIN LEAD PLATING ALL OVER.
- ② REED STRAIGHT TOOTH KNURL CS 80-80 T.P.I., 125 TEETH, 70° INCLUDED ANGLE. FITS 1.50 - 1.57 DIAMETER HOLE IN A 0.79 PRINTED CIRCUIT BOARD.
- 3. PARTS TO COMPLY WITH AMP SOLDERABILITY SPECIFICATION 109-11-3.
- ④ MATES WITH AMP PARTS 60354, 60598 OR 60804.
- ⑤ 0.00381 MIN BRIGHT TIN PLATING ALL OVER.



—	—
6.67	.263
4.18	.165
3.72	.146
2.79	.110
1.70	.067
1.57	.062
1.50	.059
1.47	.058
1.14	.045
0.79	.031
0.76	.030
0.51	.020
0.25	.010
0.13	.005
0.00381	0.000150
MM	IN

CONVERSION TABLE

METRIC

SUPERSEDED BY 3-60839-1

⑤	3-60839-1
⑤	60839-1
FINISH	PART NUMBER

THIS DRAWING IS A CONTROLLED DOCUMENT.		DWN T. BECK 8-15-97	STE TE Connectivity		
DIMENSIONS: mm		CHK R. SWING 8-15-97			
TOLERANCES UNLESS OTHERWISE SPECIFIED:		APVD A. BEDDICK 9-10-97	NAME PIN, .058 DIAMETER, BRASS, KNURLED, P.C. CONTACT		
0 PLC ± -		PRODUCT SPEC 108-1025	-		
1 PLC ± -		APPLICATION SPEC 114-1008	SIZE	CAGE CODE	DRAWING NO
2 PLC ± 0.13		WEIGHT 0.000000	A3	00779	C-60839
3 PLC ± -		CUSTOMER DRAWING	SCALE 10:1		SHEET 1 OF 1
4 PLC ± -		MATERIAL BRASS	RESTRICTED TO -		REV H2
ANGLES ± -		FINISH SEE TABLE			