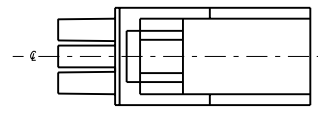
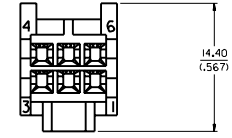
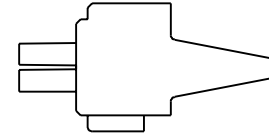
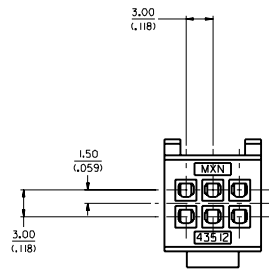
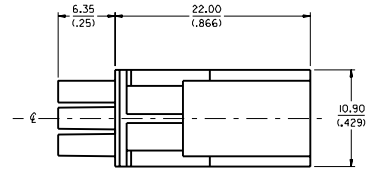


**NOTES:**

1. MATERIAL: POLYESTER (PBT), UN-FILLED, UL 94V-0. COLOR: BLACK
2. FINISH: NONE
3. PRODUCT SPEC. : PS-435 IO-002
4. ALL DIMENSIONS SHOWN FOR REFERENCE ONLY.
5. USES STANDARD 43030 MICRO-FIT FEMALE CRIMP TERMINALS.
7. PART MATES WITH 43515-0001 PLUG POD.
8. PART TO BE USED WITH 43838-0\*\*\* RECEPTACLE SHROUD.  
(SEE SHROUD DRAWING FOR ASSEMBLY INFORMATION)



MOVED LETTERING EC NO. LCR 1959-10594 DRWING POL GAR 99032711 CHG. COMERC I 99032715 APPR. COMERC I 99032715	QUALITY SYMBOLS MAJOR $\nabla$ CRITICAL $\nabla$ MINOR $\nabla$	GENERAL TOLERANCES: (UNLESS SPECIFIED) mm INCH 4 PLACES $\pm 0.15$ $\pm .006$ 3 PLACES $\pm 0.25$ $\pm .010$ 2 PLACES $\pm 0.38$ $\pm .015$ 1 PLACE $\pm 0.51$ $\pm .020$	SCALE: 4:1 DESIGN UNITS: <input checked="" type="checkbox"/> mm <input type="checkbox"/> INCH	DRAWN BY & DATE: COMERC I 97/10/06 CHECKED BY & DATE: COMERC I 97/10/06 APPROVED BY & DATE: FRY 97/10/10	DIMENSIONS: <input checked="" type="checkbox"/> mm <input type="checkbox"/> INCH <input type="checkbox"/> mm <input type="checkbox"/> INCH ONLY	SHT 1 REV
	DESCRIPTION: MICRO-FIT RECEPTACLE 6 CIRCUIT, DUAL ROW COMPODRE SYSTEM	TITLE: MICRO-FIT RECEPTACLE 6 CIRCUIT, DUAL ROW COMPODRE SYSTEM	CAD FILENAME: S4351201.DCN MATERIAL NO.: 43512-0001 DRAWING NO.: SD-43512-001	SHEET NO.: 1 OF 1 SIZE: D		
	DRAFT WHERE APPLICABLE MUST REMAIN WITHIN DIMENSIONS	THIS DRAWING CONTAINS INFORMATION THAT IS PROPRIETARY TO MOLEX INCORPORATED AND SHOULD NOT BE USED WITHOUT WRITTEN PERMISSION.	REVISION ON CAD ONLY			
	REV A	DIMENSIONS: mm INCH mm INCH ONLY	REVISION ON CAD ONLY			