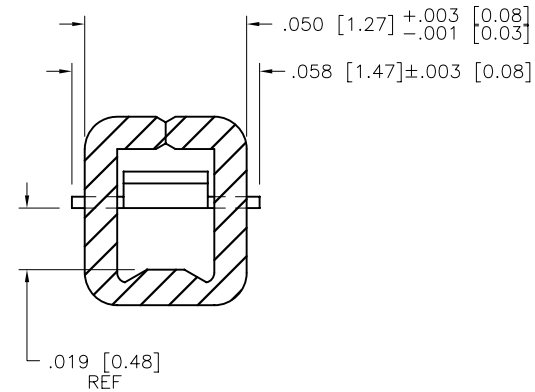
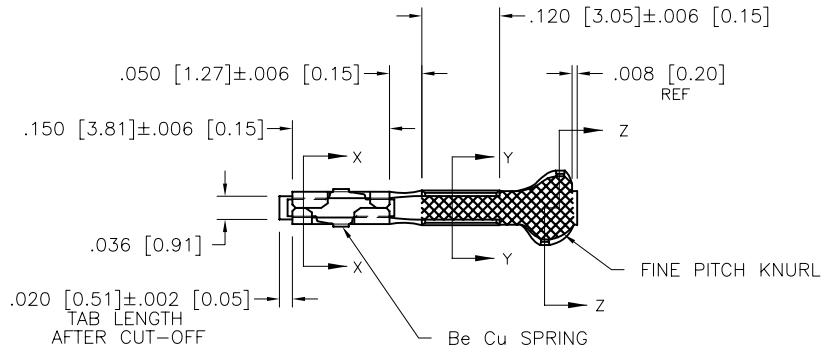
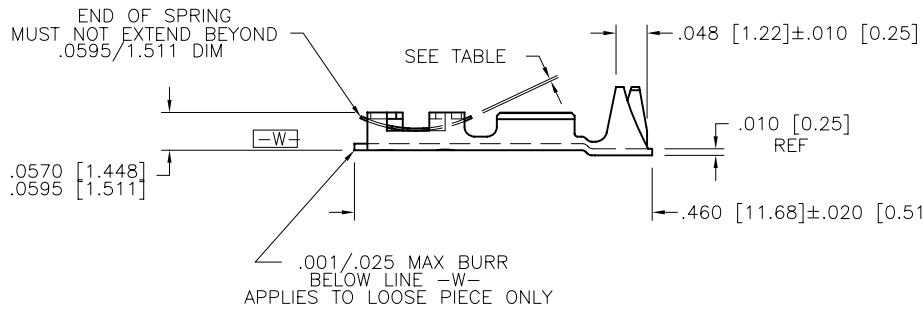


PRODUCT NUMBER  
SEE TABLE

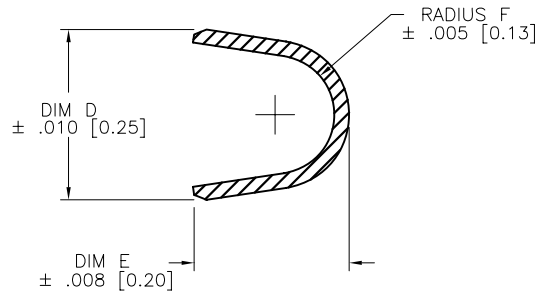


SECTION X-X  
SCALE 5:1

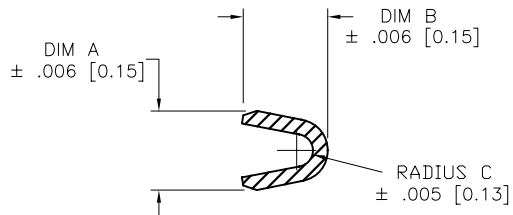


mat'l. code SEE TABLE		surface <input checked="" type="checkbox"/> tolerance		projection		product family PV TERMINALS	
ltr	ec'n no	dr	date	tolerances unless otherwise specified		title	
J	13943	EJK	1987-05-01	angles	$XX \pm .01/XX \pm 3$	 <b>MINI PV™ RECEPTACLE CRIMP-TO-WIRE</b>	
K	V60632	EPK	1996-05-10		$XXX \pm .005/XXX \pm 13$		
L	V61310	EPK	196-10-15	$0' \pm 2'$	$XXXX \pm .0020/XXX \pm .051$		
M	V05-0267	VS	2005-03-28	dr	E.J.HALEY	1987-05-01	scale 1:1
N	V06-0623	HTB	2006-06-28	engr	H.SUNDY	1987-05-01	dwg no
P	V08-0115	HTB	2008-04-03	chr	H.SUNDY	1987-05-01	sheet 1 of 4
				appd	H.SUNDY	1987-05-01	size
sheet index	revision sheet	P	P	P	P		A4
		1	2	3	4		type
							CUSTOMER Drawing

PRODUCT NUMBER  
SEE TABLE



SECTION Z-Z  
INSULATION BARREL  
NOT TO SCALE



SECTION Y-Y  
WIRE BARREL  
NOT TO SCALE

NOTES

- ① BODY MATERIAL : 1/4 HARD BRASS  
SPRING MATERIAL : Be-Cu #25 HEAT TREATED  
FINISH : GOLD
- ② BODY FINISH : 75u"/1.90u MIN. GOLD OVER 50u"/1.27u MIN. NICKEL IN CONTACT AREA. REMAINDER OF PART 30u"/.76u MIN. GOLD.
- ③ BODY FINISH : 40u"/1.02u MIN. GOLD OVER 50u"/1.27u MIN. NICKEL IN CONTACT AREA. REMAINDER OF PART 30u"/.76u MIN. GOLD.
- ④ BODY FINISH : 150u"/3.81u MIN. GOLD OVER 75u"/1.91u MIN. NICKEL IN CONTACT AREA. REMAINDER OF PART 30u"/.76u MIN. GOLD. SPRING 20u"/.51u Au OVER 50u"/.27u NICKEL.
5. APPLICABLE SPECIFICATIONS :  
PRODUCT SPECIFICATIONS : BUS-12-067  
APPLICATION SPECIFICATIONS : TA-75, TA-146, TA-210, TA-228, TA-295, TA-302, AND TA-328.
6. PART TO MATE WITH .025 [0.64] ±.002 [0.05] SQUARE PIN.
- ⑦ PRODUCT MEETS EUROPEAN UNION DIRECTIVES AND OTHER COUNTRY REGULATIONS AS DESCRIBED IN GS-22-008.
8. THIS PRODUCT IS NOT INTENDED TO BE EXPOSED TO MANUFACTURING SOLDERING PROCESSES.

mat'l. code SEE TABLE		surface		tolerance		projection		product family PV TERMINALS	
ltr	ecr no	dr	date	tolerances unless otherwise specified		INCH/MM		title	
P				angles	XX +.01/X+3 XXX +.005/XX+13	scale 1:1		MINI PV™ RECEPTACLE CRIMP-TO-WIRE	
				0° ±2'	XXXX +.0020/XXX+.051			dwg no	
		dr	E.J.HALEY	1987-05-01			sheet 2 of 4		size
		enr	H.SUNDY	1987-05-01			75598		A4
		chr	H.SUNDY	1987-05-01			type		CUSTOMER Drawing
		appd	H.SUNDY	1987-05-01					
sheet index	revision sheet								

This document is the property of and embodies CONFIDENTIAL and PROPRIETARY information of FCI. No part of the information shown on this document may be used in any way or disclosed to others without the written consent of FCI.  
Copyright FCI



FCIconnect.com

FCI CONFIDENTIAL

1 | 2

3 |

4

PRODUCT NUMBERS	STYLE	SPRING THICKNESS	WIRE BARREL				INSULATION BARREL				PLATING
			WIRE RANGE	DIM A	DIM B	RADIUS C	INS DIA RANGE	DIM D	DIM E	RADIUS F	
75598-001						O B S O L E T E					
75598-001LF	REELED	.005/0.13	22-26	.070/1.78	.070/1.78	.017/0.43	.036/0.91-.103/2.62	.139/3.53	.120/3.05	.050/1.27	NOTE 2
75598-002						O B S O L E T E					
75598-002LF	REELED	.005/0.13	28-32	.054/1.37	.058/1.47	.011/0.28	.028/0.71-.054/1.37	.115/2.92	.105/2.67	.040/1.02	NOTE 3
75598-003						O B S O L E T E					
75598-003LF	REELED	.005/0.13	22-26	.070/1.78	.070/1.78	.017/0.43	.036/0.91-.103/2.62	.139/3.53	.120/3.05	.050/1.27	NOTE 3
75598-004						O B S O L E T E					
75598-004LF	REELED	.005/0.13	18-20	.104/2.64	.104/2.64	.021/0.53	.042/1.07-.103/2.62	.139/3.53	.120/3.05	.050/1.27	NOTE 3
75598-005						O B S O L E T E					
75598-005LF	REELED	.0065/0.165	18-20	.104/2.64	.104/2.64	.021/0.53	.042/1.07-.103/2.62	.139/3.53	.120/3.05	.050/1.27	NOTE 3
75598-006						O B S O L E T E					
75598-006LF	LOOSE PIECE	.005/0.13	22-26	.070/1.78	.070/1.78	.017/0.43	.036/0.91-.103/2.62	.139/3.53	.120/3.05	.050/1.27	NOTE 2
75598-007						O B S O L E T E					
75598-007LF	LOOSE PIECE	.005/0.13	28-32	.054/1.37	.058/1.47	.011/0.28	.028/0.71-.054/1.37	.115/2.92	.105/2.67	.040/1.02	NOTE 3
75598-008						O B S O L E T E					
75598-008LF	LOOSE PIECE	.005/0.13	22-26	.070/1.78	.070/1.78	.017/0.43	.036/0.91-.103/2.62	.139/3.53	.120/3.05	.050/1.27	NOTE 3
75598-009						O B S O L E T E					
75598-009LF	LOOSE PIECE	.005/0.13	18-20	.104/2.64	.104/2.64	.021/0.53	.042/1.07-.103/2.62	.139/3.53	.120/3.05	.050/1.27	NOTE 3
75598-010						O B S O L E T E					
75598-010LF	LOOSE PIECE	.0065/0.165	18-20	.104/2.64	.104/2.64	.021/0.53	.042/1.07-.103/2.62	.139/3.53	.120/3.05	.050/1.27	NOTE 3
75598-011						O B S O L E T E					
75598-011LF	REELED	.0035/0.089	18-20	.104/2.64	.104/2.64	.021/0.53	.042/1.07-.103/2.62	.139/3.53	.120/3.05	.050/1.27	NOTE 2
75598-012						O B S O L E T E					
75598-012LF	REELED	.0035/0.089	22-26	.070/1.78	.070/1.78	.017/0.43	.036/0.91-.103/2.62	.139/3.53	.120/3.05	.050/1.27	NOTE 2
75598-013						O B S O L E T E					
75598-013LF	REELED	.0035/0.089	28-32	.054/1.37	.058/1.47	.011/0.28	.028/0.71-.054/1.37	.115/2.92	.105/2.67	.040/1.02	NOTE 2
75598-014						O B S O L E T E					
75598-014LF	REELED	.005/0.13	18-20	.104/2.64	.104/2.64	.021/0.53	.042/1.07-.103/2.62	.139/3.53	.120/3.05	.050/1.27	NOTE 2
75598-015						O B S O L E T E					
75598-015LF	REELED	.005/0.13	28-32	.054/1.37	.058/1.47	.011/0.28	.028/0.71-.054/1.37	.115/2.92	.105/2.67	.040/1.02	NOTE 2
75598-016						O B S O L E T E					
75598-016LF	REELED	.0065/0.165	18-20	.104/2.64	.104/2.64	.021/0.53	.042/1.07-.103/2.62	.139/3.53	.120/3.05	.050/1.27	NOTE 2
75598-017						O B S O L E T E					
75598-017LF	REELED	.0065/0.165	22-26	.070/1.78	.070/1.78	.017/0.43	.036/0.91-.103/2.62	.139/3.53	.120/3.05	.050/1.27	NOTE 2
75598-018						O B S O L E T E					
75598-018LF	REELED	.0065/0.165	28-32	.054/1.37	.058/1.47	.011/0.28	.028/0.71-.054/1.37	.115/2.92	.105/2.67	.040/1.02	NOTE 3
75598-019						O B S O L E T E					
75598-019LF	REELED	.0035/0.089	18-20	.104/2.64	.104/2.64	.021/0.53	.042/1.07-.103/2.62	.139/3.53	.120/3.05	.050/1.27	NOTE 3
75598-020						O B S O L E T E					
75598-020LF	REELED	.0035/0.089	22-26	.070/1.78	.070/1.78	.017/0.43	.042/1.07-.103/2.62	.139/3.53	.120/3.05	.050/1.27	NOTE 3

LOOSE PIECE VERS. OF -001  
LOOSE PIECE VERS. OF -001LF  
LOOSE PIECE VERS. OF -002  
LOOSE PIECE VERS. OF -002LF  
LOOSE PIECE VERS. OF -003  
LOOSE PIECE VERS. OF -003LF  
LOOSE PIECE VERS. OF -004  
LOOSE PIECE VERS. OF -004LF  
LOOSE PIECE VERS. OF -005  
LOOSE PIECE VERS. OF -005LF

A

A

B

B

mat'l. code		surface		tolerance		projection		product family	
SEE TABLE								PV TERMINALS	
ltr	ecr no	dr	date	tolerances unless otherwise specified		INCH/MM		title	
P				angles	.XX ±01/XX±3	scale 1:1		MINI PV™ RECEPTACLE CRIMP-TO-WIRE	
				linear	.XXX ±.005/XX±.13			dwg no	
				0° ±2'	.XXXX ±.0020/XXX±.051			sheet 3 of 4	
				dr	E.J.HALEY 1987-05-01			size	
				enr	H.SUNDY 1987-05-01			75598	
				chr	H.SUNDY 1987-05-01			A4	
				appd	H.SUNDY 1987-05-01			type	
sheet index		revision sheet						CUSTOMER Drawing	

form: A4mmXLI

1 |

2 |

3 |

4



PRODUCT NUMBERS	STYLE	SPRING THICKNESS	WIRE BARREL				INSULATION BARREL				PLATING
			WIRE RANGE	DIM A	DIM B	RADIUS C	INS DIA RANGE	DIM D	DIM E	RADIUS F	
75598-021						O B S O L E T E					
75598-021LF	REELED	.0035/0.089	28-32	.054/1.37	.058/1.47	.011/0.28	.028/0.71-.054/1.37	.115/2.92	.105/2.67	.040/1.02	NOTE 3
75598-022						O B S O L E T E					
75598-022LF	REELED	.0065/0.165	22-26	.070/1.78	.070/1.78	.017/0.43	.036/0.91-.103/2.62	.139/3.53	.120/3.05	.050/1.27	NOTE 3
75598-023						O B S O L E T E					
75598-023LF	REELED	.0065/0.165	28-32	.054/1.37	.058/1.47	.011/0.28	.028/0.71-.054/1.37	.115/2.92	.105/2.67	.040/1.02	NOTE 3
75598-024						O B S O L E T E					
75598-024LF	LOOSE PIECE	.0035/0.089	18-20	.104/2.64	.104/2.64	.021/0.53	.042/1.07-.103/2.62	.139/3.53	.120/3.05	.050/1.27	NOTE 2
75598-025						O B S O L E T E					
75598-025LF	LOOSE PIECE	.0035/0.089	22-26	.070/1.78	.070/1.78	.017/0.43	.036/0.91-.103/2.62	.139/3.53	.120/3.05	.050/1.27	NOTE 2
75598-026						O B S O L E T E					
75598-026LF	LOOSE PIECE	.0035/0.089	28-32	.054/1.37	.058/1.47	.011/0.28	.028/0.71-.054/1.37	.115/2.92	.105/2.67	.040/1.02	NOTE 2
75598-027						O B S O L E T E					
75598-027LF	LOOSE PIECE	.005/0.13	18-20	.104/2.64	.104/2.64	.021/0.53	.042/1.07-.103/2.62	.139/3.53	.120/3.05	.050/1.27	NOTE 2
75598-028						O B S O L E T E					
75598-028LF	LOOSE PIECE	.005/0.13	28-32	.054/1.37	.058/1.47	.011/0.28	.028/0.71-.054/1.37	.115/2.92	.105/2.67	.040/1.02	NOTE 2
75598-029						O B S O L E T E					
75598-029LF	LOOSE PIECE	.0065/0.165	18-20	.104/2.64	.104/2.64	.021/0.53	.042/1.07-.103/2.62	.139/3.53	.120/3.05	.050/1.27	NOTE 2
75598-030						O B S O L E T E					
75598-030LF	LOOSE PIECE	.0065/0.165	22-26	.070/1.78	.070/1.78	.017/0.43	.036/0.91-.103/2.62	.139/3.53	.120/3.05	.050/1.27	NOTE 2
75598-031						O B S O L E T E					
75598-031LF	LOOSE PIECE	.0065/0.165	28-32	.054/1.37	.058/1.47	.011/0.28	.028/0.71-.054/1.37	.115/2.92	.105/2.67	.040/1.02	NOTE 2
75598-032						O B S O L E T E					
75598-032LF	LOOSE PIECE	.0035/0.089	18-20	.104/2.64	.104/2.64	.021/0.53	.042/1.07-.103/2.62	.139/3.53	.120/3.05	.050/1.27	NOTE 3
75598-033						O B S O L E T E					
75598-033LF	LOOSE PIECE	.0035/0.089	22-26	.070/1.78	.070/1.78	.017/0.43	.042/1.07-.103/2.62	.139/3.53	.120/3.05	.050/1.27	NOTE 3
75598-034						O B S O L E T E					
75598-034LF	LOOSE PIECE	.0035/0.089	28-32	.054/1.37	.058/1.47	.011/0.28	.028/0.71-.054/1.37	.115/2.92	.105/2.67	.040/1.02	NOTE 3
75598-035						O B S O L E T E					
75598-035LF	LOOSE PIECE	.0065/0.165	22-26	.070/1.78	.070/1.78	.017/0.43	.036/0.91-.103/2.62	.139/3.53	.120/3.05	.050/1.27	NOTE 3
75598-036						O B S O L E T E					
75598-036LF	LOOSE PIECE	.0065/0.165	28-32	.054/1.37	.058/1.47	.011/0.28	.028/0.71-.054/1.37	.115/2.92	.105/2.67	.040/1.02	NOTE 3
75598-037						O B S O L E T E					
75598-037LF	REELED	.0048/0.122	22-26	.070/1.78	.070/1.78	.017/0.43	.036/0.91-.103/2.62	.139/3.53	.120/3.05	.050/1.27	NOTE 4
75598-038						O B S O L E T E					
75598-038LF	REELED	.0048/0.122	32-36	.054/1.37	.046/1.17	.010/0.25	.020/0.51-.040/1.02	.067/1.70	.061/1.55	.020/0.51	NOTE 4
75598-039						O B S O L E T E					
75598-039LF	REELED	.0048/0.122	32-36	.054/1.37	.046/1.17	.010/0.25	.020/0.51-.040/1.02	.067/1.70	.061/1.55	.020/0.51	NOTE 2

LOOSE PIECE VERS. OF -011  
LOOSE PIECE VERS. OF -011LF  
LOOSE PIECE VERS. OF -012  
LOOSE PIECE VERS. OF -012LF  
LOOSE PIECE VERS. OF -013  
LOOSE PIECE VERS. OF -013LF  
LOOSE PIECE VERS. OF -014  
LOOSE PIECE VERS. OF -014LF  
LOOSE PIECE VERS. OF -015  
LOOSE PIECE VERS. OF -015LF  
LOOSE PIECE VERS. OF -016  
LOOSE PIECE VERS. OF -016LF  
LOOSE PIECE VERS. OF -017  
LOOSE PIECE VERS. OF -017LF  
LOOSE PIECE VERS. OF -018  
LOOSE PIECE VERS. OF -018LF  
LOOSE PIECE VERS. OF -019  
LOOSE PIECE VERS. OF -019LF  
LOOSE PIECE VERS. OF -020  
LOOSE PIECE VERS. OF -020LF  
LOOSE PIECE VERS. OF -021  
LOOSE PIECE VERS. OF -021LF  
LOOSE PIECE VERS. OF -022  
LOOSE PIECE VERS. OF -022LF  
LOOSE PIECE VERS. OF -023  
LOOSE PIECE VERS. OF -023LF

mat'l. code		surface		tolerance		projection		product family		
SEE TABLE								PV TERMINALS		
ltr	ecr no	dr	date	tolerances unless otherwise specified				title		
P				angles	.XX ±01/XX+3 XXX ±005/XX+13		INCH/MM		MINI PV™ RECEPTACLE CRIMP-TO-WIRE	
				0° ±2'	XXXX ±0020/XXX+051		scale 1:1		dwg no	
				dr	T. BREWBAKER	2008-04-03	FCI		sheet 4 of 4	
				engr	T. BREWBAKER	2008-04-03			75598	A4
				chr	T. BREWBAKER	2008-04-03				
				appd	T. BREWBAKER	2008-04-03				
sheet index	revision sheet								type CUSTOMER Drawing	