

REFERENCE SPECIFICATIONS

-NFC 93425 (in compliance with HE 501)

PHYSICAL CHARACTERISTICS

-INSULATOR MATERIAL: THERMOPLASTIC UL94V0

-CONTACT MATERIAL: BRASS
GOLD OVER NICKEL

-ACCESSORIES: BRASS,cadmium plated yellow passivation

-SHELLS: STEEL,cadmium plated yellow passivation

ELECTRICAL CHARACTERISTICS

-NOMINAL CURRENT: 7.5A

-CONTACT RESISTANCE: <= 7.3 m ohms

-CONTACT/CONTACT : >=1000 V

-CONTACT/GROUND : >=1200 V

-INSULATION RESISTANCE: >=5000 MOhms

ENVIRONMENTAL CHARACTERISTICS

- CLIMATIC CATEGORY: 55/125/56

TEMPERATURE RANGE -55°C TO +125°C

DAMP HEAT STEADY STATE 56 DAYS

SALT SPRAY 48 HOURS

MECHANICAL CHARACTERISTICS

- RETENTION AGAINST TORQUE: - Threaded insert: 0.7 N.m minimum

- Female screw : 0.5 N.m minimum

DBML25P043

Series

Shell size: **E A B C D**
see sheet 2

Front accessory definition
see sheet 2

- Blank** :without accessory
- F** :floating mounting
- L** :threaded insert M3
- O** :threaded insert UNC 4-40
- V** :female screw UNC 4-40

Contact number (see sheet 2)

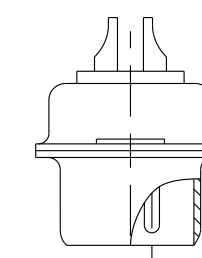
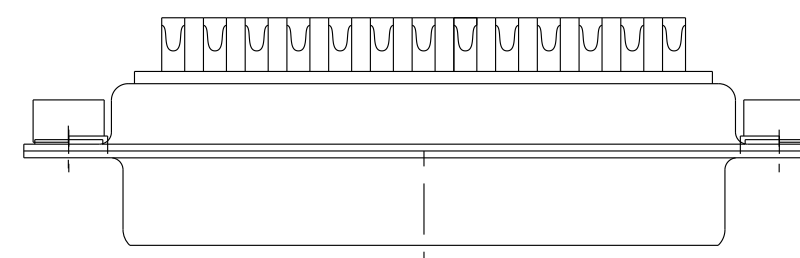
9,15,25,37,50

Contacts

P :Pin

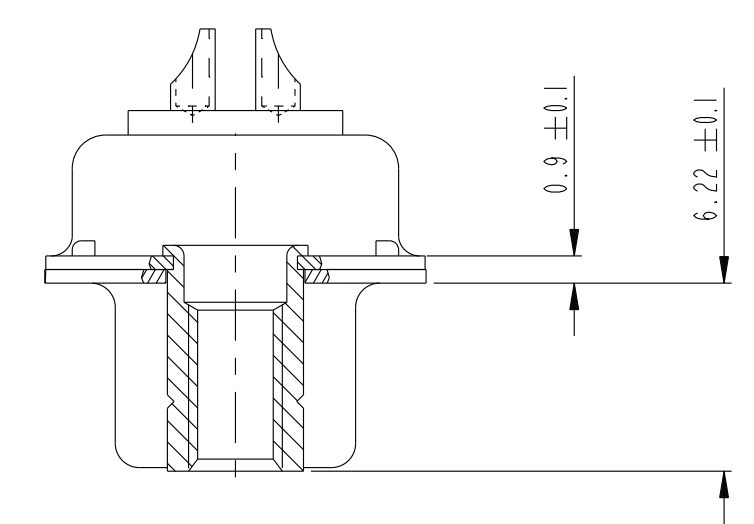
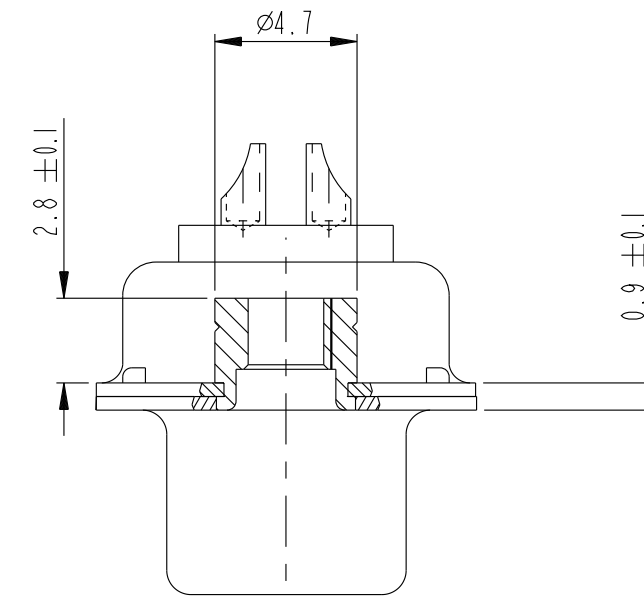
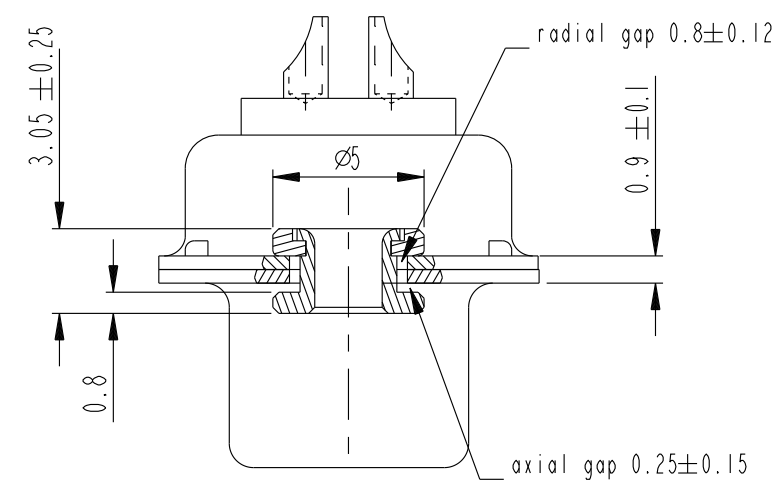
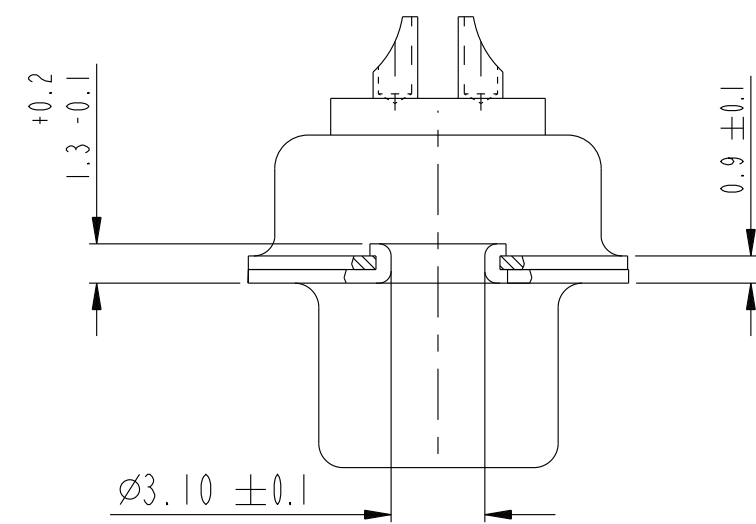
Plating

- Blank** :solder bucket 500 matings/unmatings
- 043** :solder bucket 500 matings/unmatings
for harsh environment



25 WAY for Example

| | | | | | | | | | |
|---------------|---------|---|------------|----------------|----|------------------------|--------------|----------|----------|
| spec ref | dr | 1, Product Eng | 2015/06/15 | projection | mm | size | A2 | scale | 1:1 |
| tolerance std | eng | Gregar Mathew | 2021/12/07 | | | ecn no | ELX-42954-1 | | |
| ISO 406 | chr | - | - | | | | rel level | Released | |
| ISO 1101 | appr | Kuriakosa, San | 2021/12/07 | product family | - | - | | | |
| surface | linear | Amphenol FCI D-SUB MALE DM HE501series with solder buckets | | cat. no. | - | Product - Customer Drw | sheet 1 of 4 | rev | D |
| ISO 1302 | angular | 0° | ±1° | | | | | | |



| | | | | |
|-----------------|---------------|---------------------|----------------------------------|-------------------------|
| FRONT ACCESSORY | Blank without | F floating mounting | L insert M3 O insert UNC 4.40 | V female screw UNC 4.40 |
|-----------------|---------------|---------------------|----------------------------------|-------------------------|

| PART NUMBER | FRONT ACCESSORY |
|-------------|-----------------------|
| D*MxxP | without |
| D*MFxxP | floating mounting |
| D*MLxxP | insert M3 |
| D*MOxxP | insert UNC 4.40 |
| D*MVxxP | female screw UNC 4.40 |

| shell size | Contact number |
|------------|----------------|
| * | XX |
| E | 09 |
| A | 15 |
| B | 25 |
| C | 37 |
| D | 50 |

| PART NUMBER | FRONT ACCESSORY |
|-------------|-----------------------|
| D*MxxP043 | without |
| D*MFxxP043 | floating mounting |
| D*MLxxP043 | insert M3 |
| D*MOxxP043 | insert UNC 4.40 |
| D*MVxxP043 | female screw UNC 4.40 |

CROSS REFERENCES HE501 and FCI

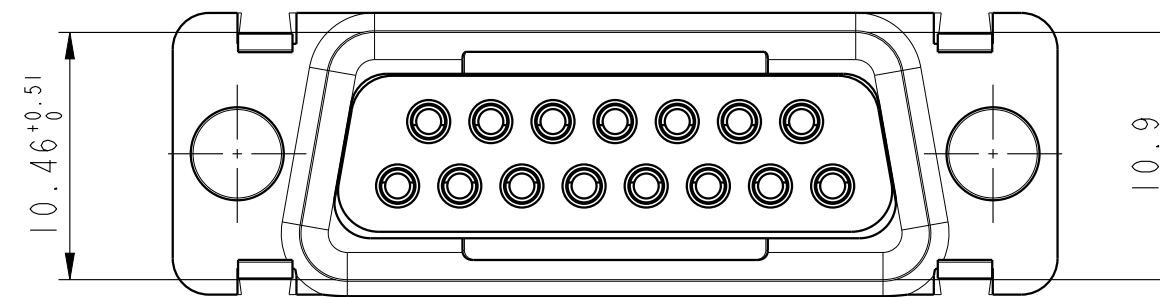
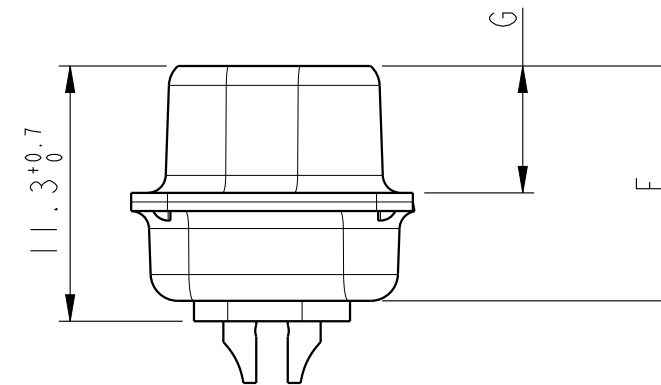
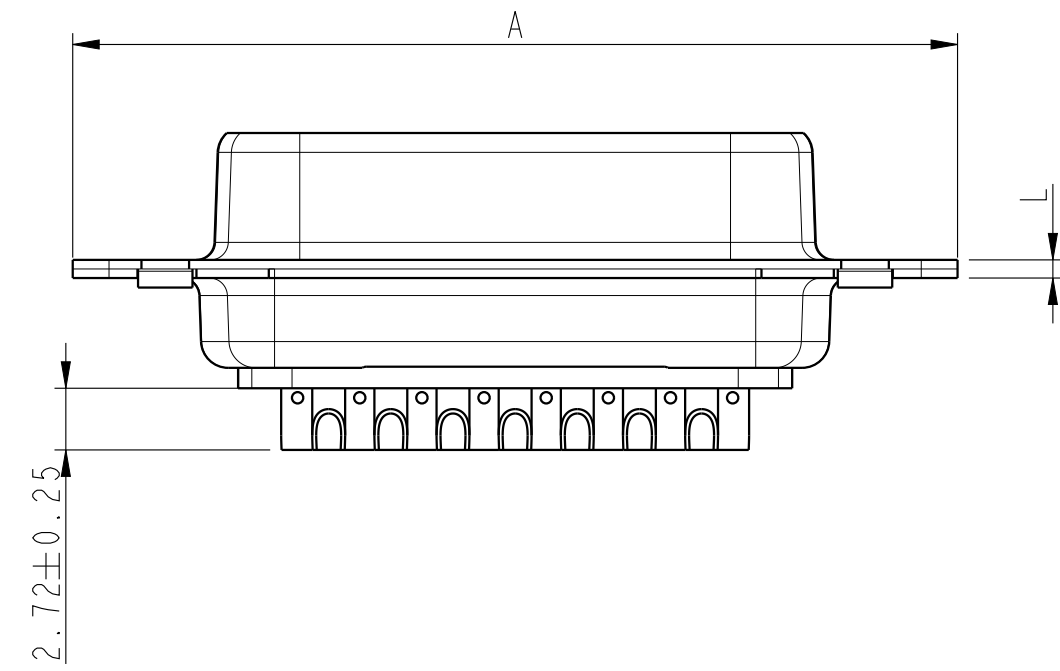
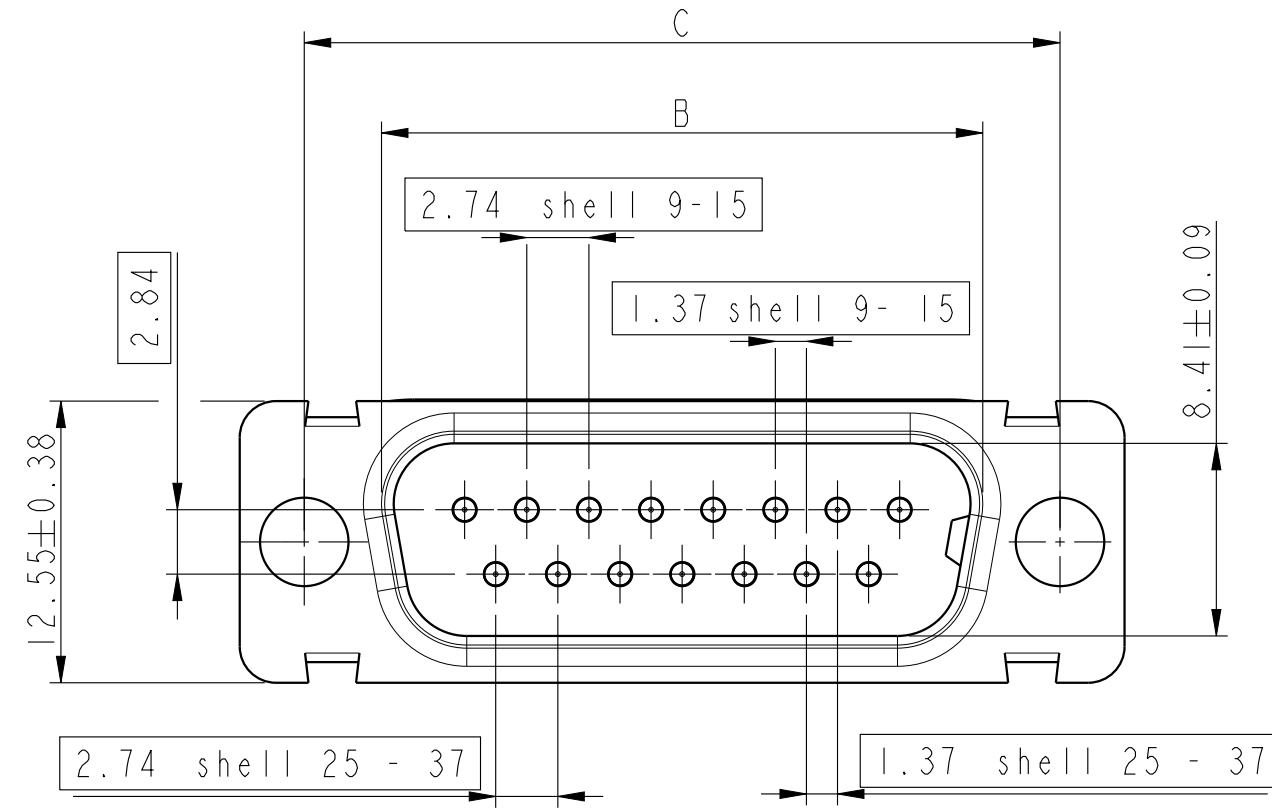
| HE501 P/N | FCI P/N | FRONT ACCESSORY |
|------------|---------|-------------------|
| HE501NxxAP | D*MxxP | without |
| HE501FxxAP | D*MFxxP | floating mounting |

| | | | | | | |
|---------------------------------------|---------------------|--------------------------------------|---------------------|----|--|--------------------|
| spec ref | dr 1, Product Eng | 2015/06/15 | projection | mm | size A2 | scale 1:1 |
| tolerance std | eng Gregar Mathew | 2021/12/07 | | | ecn no ELX-42954-1 | rel level Released |
| ISO 406 ISO 1101 | chr - | 2021/12/07 | | | | |
| TOLERANCES UNLESS OTHERWISE SPECIFIED | appr Kuriakosa, San | 2021/12/07 | Amphenol FCI | | title D-SUB MALE DM HE501series with solder buckets | |
| surface | linear | 0.X ±0.3 0.XX ±0.1 0.XXX ±0.05 | cat. no. - | | Product - Customer Drw | sheet 2 of 4 |
| ISO 1302 | angular | 0° ±1° | amphenol-icc.com | | rev D | sheet 2 of 4 |

DIMENSIONS FOR SHELL E, A, B, C

Dimensions are in millimeters

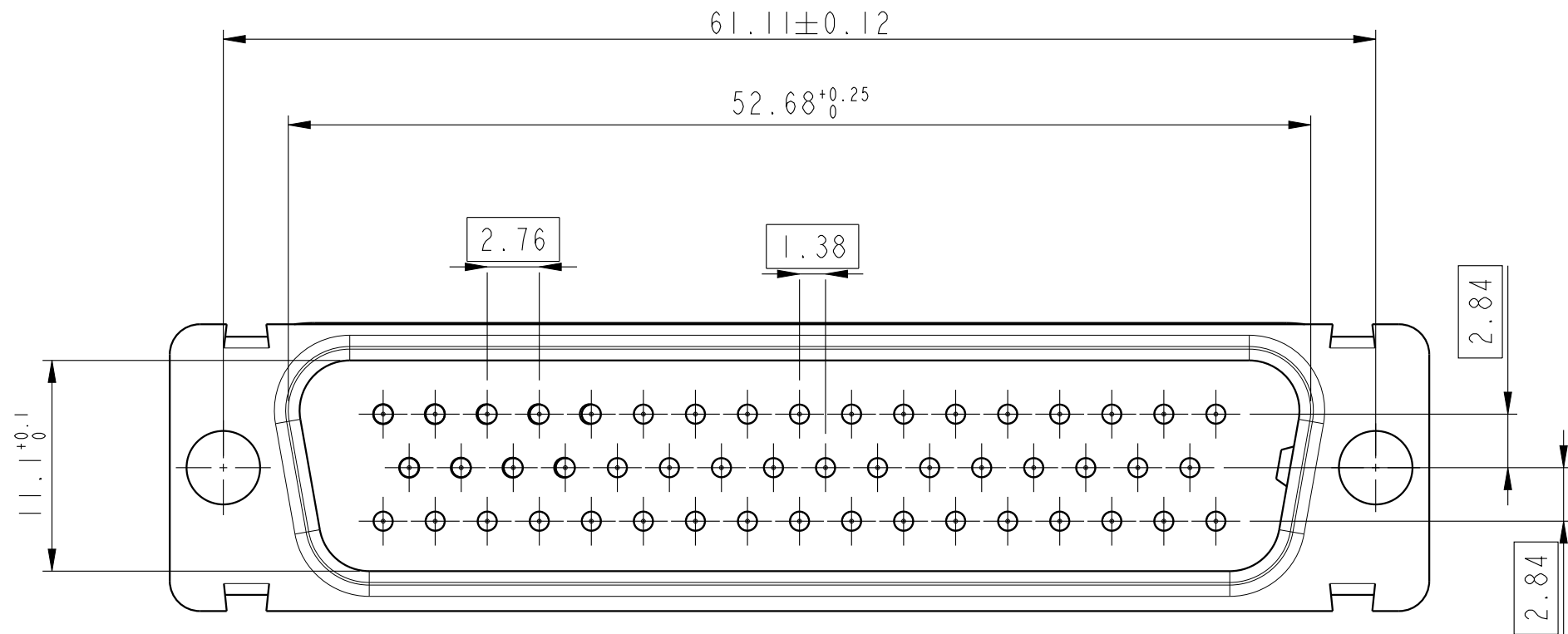
| Shell size | Number of contacts | A $\begin{matrix} +0.76 \\ -0 \end{matrix}$ | B $\begin{matrix} +0.25 \\ -0 \end{matrix}$ | C ± 0.12 | F $\begin{matrix} +0.57 \\ -0 \end{matrix}$ | G $\begin{matrix} +0.25 \\ -0 \end{matrix}$ | H $\begin{matrix} +0.51 \\ -0 \end{matrix}$ | L $\begin{matrix} +0.22 \\ -0 \end{matrix}$ |
|------------|--------------------|---|---|--------------|---|---|---|---|
| E | 09 | 30.43 | 16.91 | 24.99 | 10.47 | 5.9 $\begin{matrix} +0.15 \\ -0 \end{matrix}$ | 19.02 | 0.80 |
| A | 15 | 38.76 | 25.24 | 33.32 | 10.47 | 5.9 $\begin{matrix} +0.15 \\ -0 \end{matrix}$ | 27.25 | 0.80 |
| B | 25 | 52.65 | 38.96 | 47.04 | 10.40 | 5.7 $\begin{matrix} +0.25 \\ -0 \end{matrix}$ | 41.02 | 0.80 |
| C | 37 | 68.96 | 55.42 | 63.50 | 10.56 | 5.7 $\begin{matrix} +0.25 \\ -0 \end{matrix}$ | 57.45 | 0.90 |



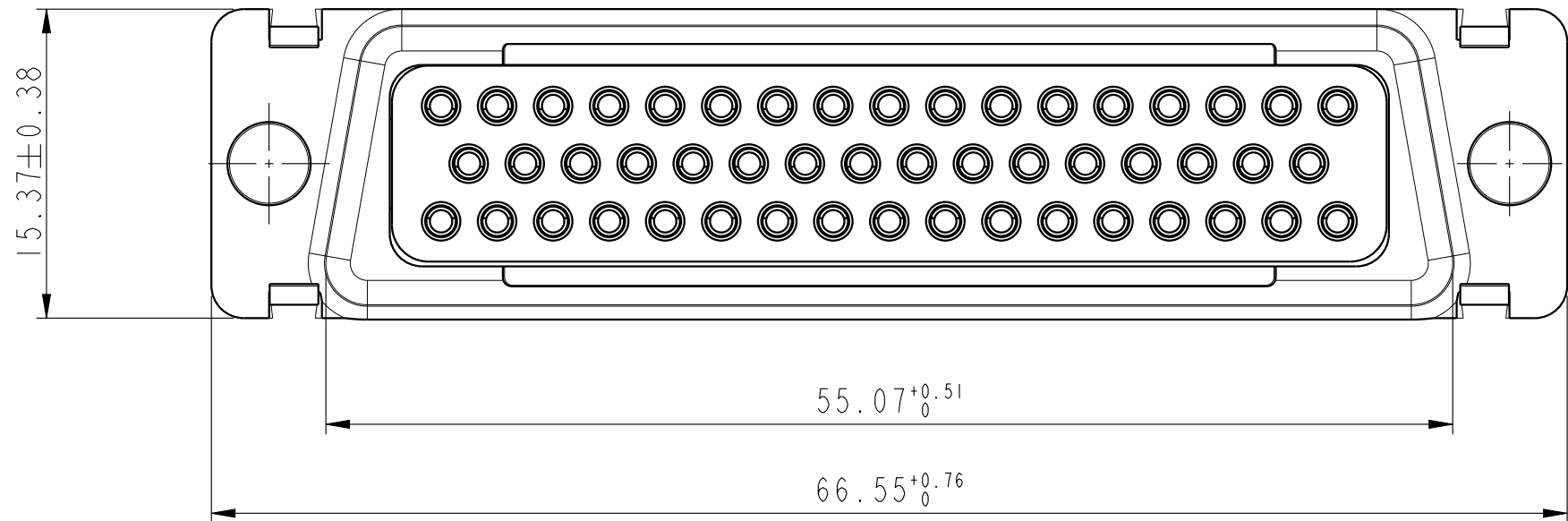
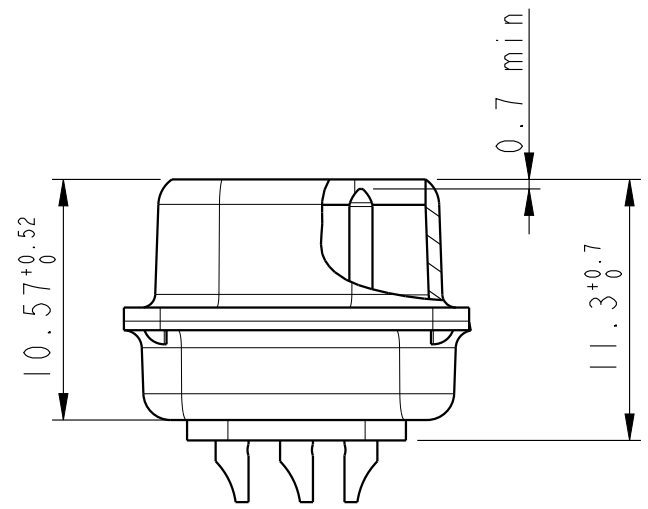
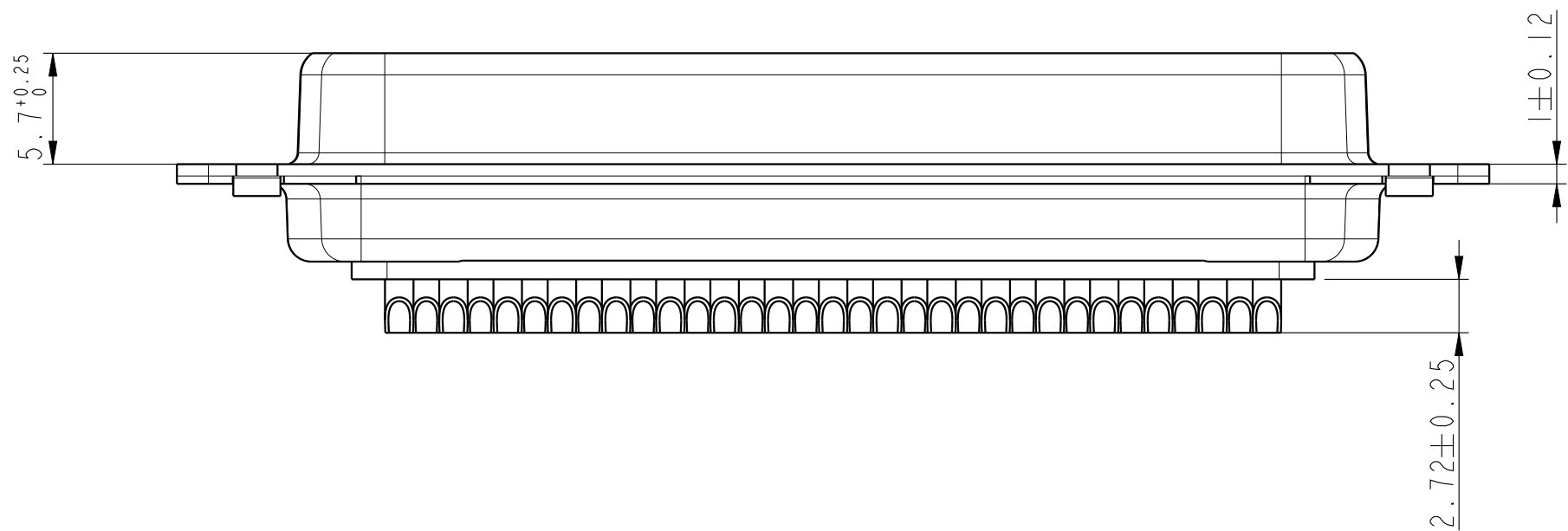
SCALE 3:1

| | | | | | | | | | |
|---------------------|---------|----------------|------------|---------------------|----|--|-------------|------------------------|----------------|
| spec ref | dr | 1, Product Eng | 2015/06/15 | projection | mm | size | A2 | scale | 1:1 |
| tolerance std | eng | Gregar Mathew | 2021/12/07 | | | ecn no | ELX-42954-1 | rel level | Released |
| ISO 406 ISO 1101 | chr | - | apppr | | | Kuriakosa, San | 2021/12/07 | | product family |
| surface | linear | 0.X | ±0.3 | Amphenol FCI | | D-SUB MALE DM HE501series with solder buckets | | dwg no | C01-8637-1737 |
| ISO 1302 | angular | 0° | ±1° | amphenol-icc.com | | cat. no. | - | Product - Customer Drw | sheet 3 of 4 |

DIMENSIONS FOR SHELL SIZE D (50 CONTACTS)



SCALE 3:1



Amphenol FCI

© 2020 Amphenol Corporation

| | | | | | | | | | |
|------------------|---------|----------------|------------|------------|----|--------|---------------------------|--------------|-----|
| spec ref | dr | 1, Product Eng | 2015/06/15 | projection | mm | size | A2 | scale | 1:1 |
| tolerance std | eng | Gregar Mathew | 2021/12/07 | | | ecn no | ELX-42954-1 | | |
| ISO 406 | chr | - | rel level | | | | Released | | |
| ISO 1101 | appr | Kuriakose, San | 2021/12/07 | | | | product family | - | |
| surface | linear | 0.X | ±0.3 | | | title | D-SUB MALE DM HE501series | | |
| ISO 1302 | | 0.XX | ±0.1 | | | dwg no | C01-8637-1737 | | |
| | angular | 0° | ±1° | | | rev | D | | |
| amphenol-icc.com | | | | cat. no. | - | | Product - Customer Drw | sheet 4 of 4 | |