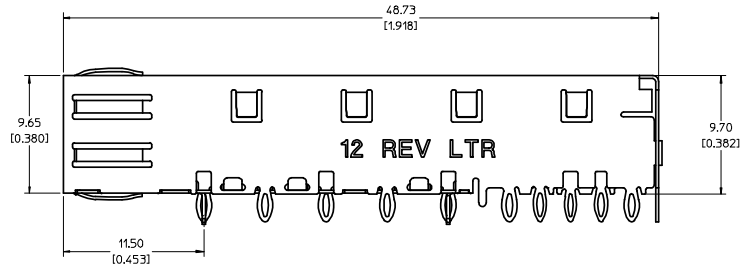
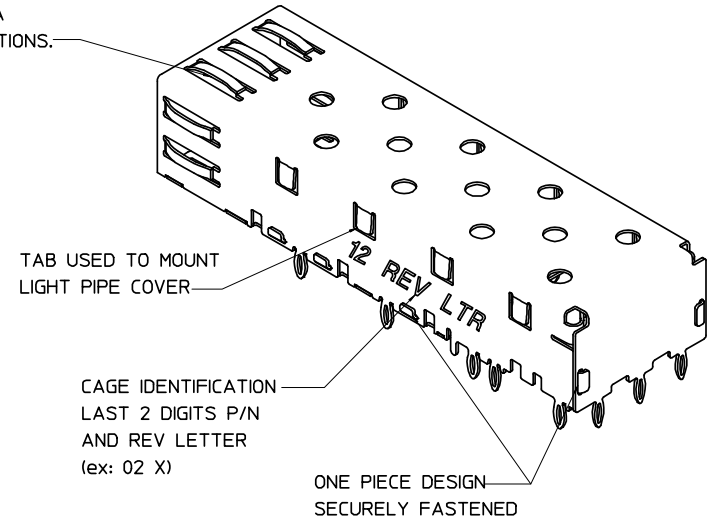


SPRING FINGER GASKET WITH TWO POINTS OF CONTACT. COMPLIES WITH (SFP) MSA BOARD AND BEZEL LOCATIONS.

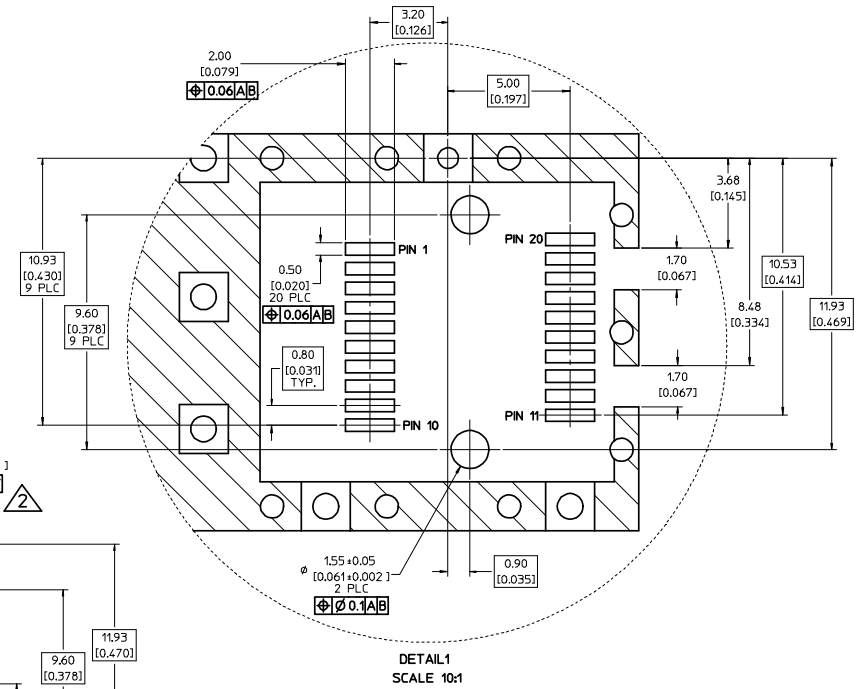
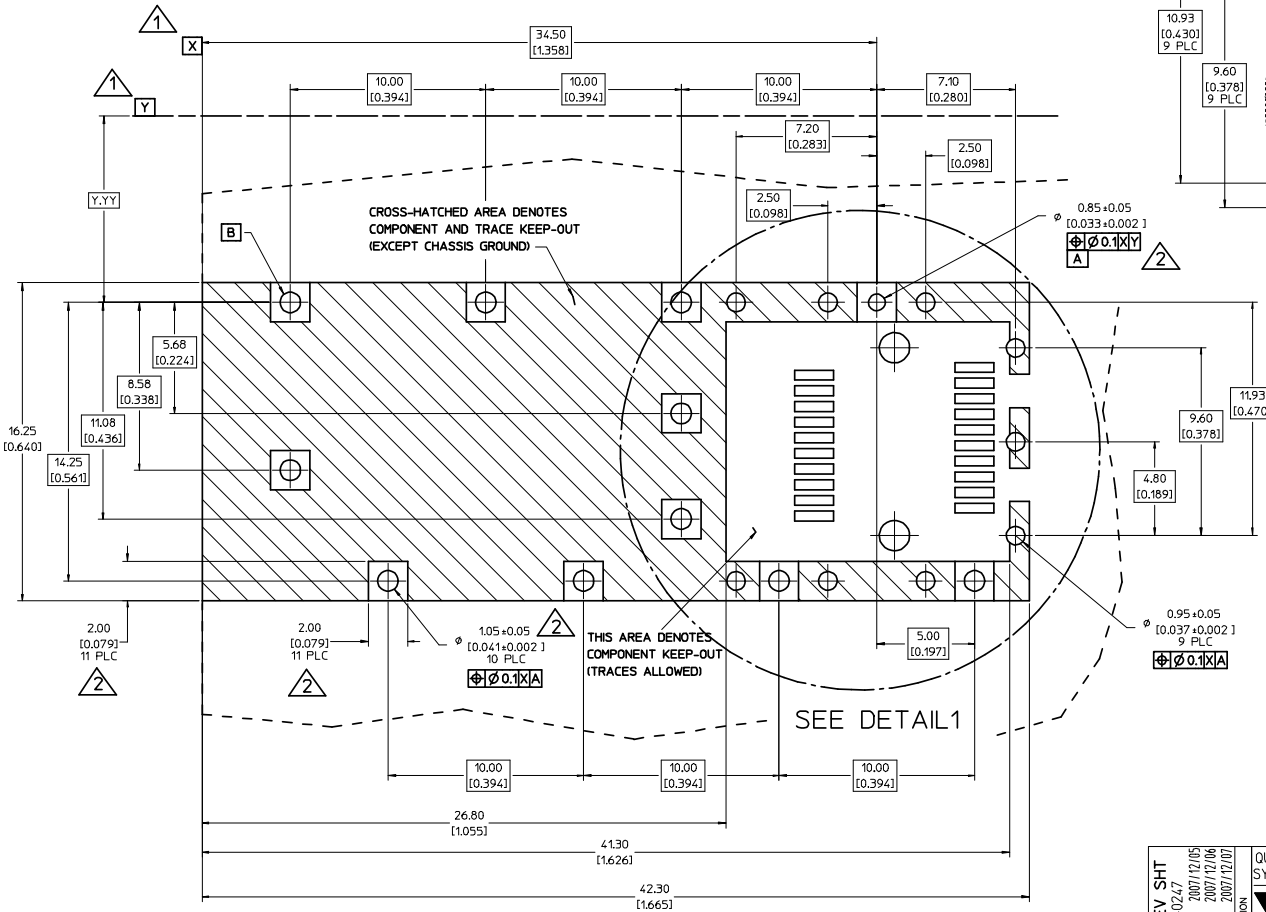


NOTES:

1. PRESS FIT LEGS, 0.090 INCHES LONG. 1.57 [0.062] MINIMUM PCB THICKNESS.
2. THIS CAGE IS FOR SINGLE SIDED USE ONLY.
3. CAN BE USED WITH THE FOLLOWING LIGHT PIPE PART NUMBERS:
 - 747260001 - LIGHT PIPE FROM BACK TO TOP (REFER TO DOCUMENT SD-74726-001)
 - 747260002 - LIGHT PIPE FROM SIDE TO TOP (REFER TO DOCUMENT SD-74726-002)
4. MATERIAL: COPPER ALLOY
PLATING: PRE-PLATED WITH NICKEL
5. THIS PART MEETS THE RESTRICTION OF HAZARDOUS SUBSTANCES IN ELECTRICAL AND ELECTRONIC EQUIPMENT (ROHS) DIRECTIVE (2002/95/EC).

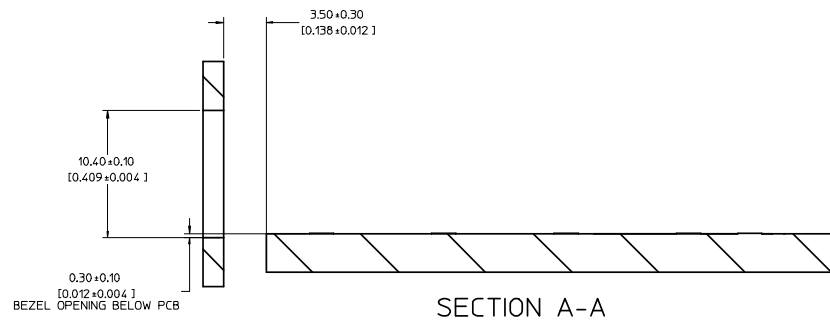
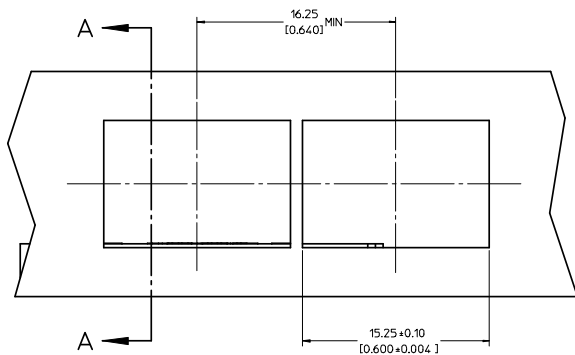
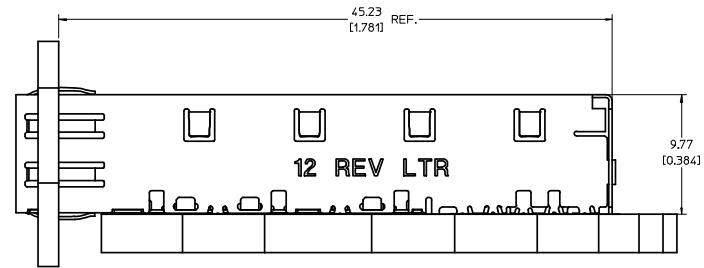
UPDATE & REV SHT EC NO: USY2008-0247 DRAWN BY: CCOX CHKD: CCOX APPR: MONROE 2007/12/05 2007/12/06 2007/12/07	QUALITY SYMBOLS ▽=0 ▽=0	GENERAL TOLERANCES (UNLESS SPECIFIED) mm INCH		DIMENSION STYLE MM/IN	SCALE 5:1	DESIGN UNITS METRIC	THIRD ANGLE PROJECTION
		4 PLACES ±.05 ±.005 3 PLACES ±.03 ±.01 2 PLACES ±0.13 ±.01 1 PLACE ±0.25 ±.01 ANGULAR ± 1°	DRAWN BY: CCOX DATE: 2007/01/17 CHECKED BY: RMAHMOOD DATE: 2007/01/17 APPROVED BY: RMAHMOOD DATE: 2007/01/17	TITLE SFP ONE PIECE CAGE W/009 LEG DESIGN SALES DRAWING		MOLEX INCORPORATED	
DRAFT WHERE APPLICABLE MUST REMAIN WITHIN DIMENSIONS		MATERIAL NO. 747370012		DOCUMENT NO. SD-74737-012		THIS DRAWING CONTAINS INFORMATION THAT IS PROPRIETARY TO MOLEX INCORPORATED AND SHOULD NOT BE USED WITHOUT WRITTEN PERMISSION	

- DATUM AND BASIC DIMENSIONS ESTABLISHED BY CUSTOMER.
- PADS AND VIAS ARE CHASSIS GROUND.
- HOLE LAYOUT SHOWN IS FOR SINGLE SIDED MOUNTING ONLY.
- CONNECTOR PAD LAYOUT PER SFP MSA, WILL ACCOMMODATE MOLEX CONNECTOR SERIES 74441 OR EQUIVALENT.



UPDATE & REV SHT EC NO: USY2008-0247 DRAWN: CCOX CHKD: 2007/12/06 APPR: KMNDRD 2007/12/07	QUALITY SYMBOLS ▽=0 ▽=0	GENERAL TOLERANCES (UNLESS SPECIFIED)		DIMENSION STYLE MM/IN	SCALE 8:1	DESIGN UNITS METRIC	THIRD ANGLE PROJECTION		
		4 PLACES ± --- ± --- 3 PLACES ± --- ± .005 2 PLACES ± 0.13 ± .01 1 PLACE ± 0.25 ± --- ANGULAR ± 1 °	DRAWN BY CCOX DATE 2007/01/17	CHECKED BY RMAHMOOD DATE 2007/01/17	TITLE SFP ONE PIECE CAGE W/009 LEG DESIGN SALES DRAWING				
		DRAFT WHERE APPLICABLE MUST REMAIN WITHIN DIMENSIONS	APPROVED BY RMAHMOOD DATE 2007/01/17	MATERIAL NO. 747370012	DOCUMENT NO. SD-74737-012	MOLEX INCORPORATED			
		SIZE D	THIS DRAWING CONTAINS INFORMATION THAT IS PROPRIETARY TO MOLEX INCORPORATED AND SHOULD NOT BE USED WITHOUT WRITTEN PERMISSION		SHEET NO. 2 OF 4				

20 19 18 17 16 15 14 13 12 11 10 9 8 7 6 5 4 3 2 1



UPDATE & REV SHT EC NO: USY2008-0247 CHYK: 2007/12/06 APPR: KMONROE 2007/12/07	QUALITY SYMBOLS ▽=0 ▽=0	GENERAL TOLERANCES (UNLESS SPECIFIED) <table border="1"> <thead> <tr> <th></th> <th>mm</th> <th>INCH</th> </tr> </thead> <tbody> <tr> <td>4 PLACES</td> <td>±---</td> <td>±---</td> </tr> <tr> <td>3 PLACES</td> <td>±---</td> <td>±.005</td> </tr> <tr> <td>2 PLACES</td> <td>±0.13</td> <td>±.01</td> </tr> <tr> <td>1 PLACE</td> <td>±0.25</td> <td>±---</td> </tr> </tbody> </table>		mm	INCH	4 PLACES	±---	±---	3 PLACES	±---	±.005	2 PLACES	±0.13	±.01	1 PLACE	±0.25	±---	DIMENSION STYLE MM/IN	SCALE 5:1	DESIGN UNITS METRIC	THIRD ANGLE PROJECTION
		mm	INCH																		
	4 PLACES	±---	±---																		
	3 PLACES	±---	±.005																		
2 PLACES	±0.13	±.01																			
1 PLACE	±0.25	±---																			
			DRAWN BY CCOX	DATE 2007/01/17	TITLE SFP ONE PIECE CAGE W/009 LEG DESIGN SALES DRAWING																
			CHECKED BY RMAHMOOD	DATE 2007/01/17	MOLEX INCORPORATED																
			APPROVED BY RMAHMOOD	DATE 2007/01/17	MATERIAL NO. 747370012	DOCUMENT NO. SD-74737-012															

DRAFT WHERE APPLICABLE MUST REMAIN WITHIN DIMENSIONS

SIZE D

THIS DRAWING CONTAINS INFORMATION THAT IS PROPRIETARY TO MOLEX INCORPORATED AND SHOULD NOT BE USED WITHOUT WRITTEN PERMISSION

SHEET NO. 3 OF 4

19 18 17 16 15 14 13 12 11 10 9 8 7 6 5 4 3 2 1

