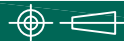
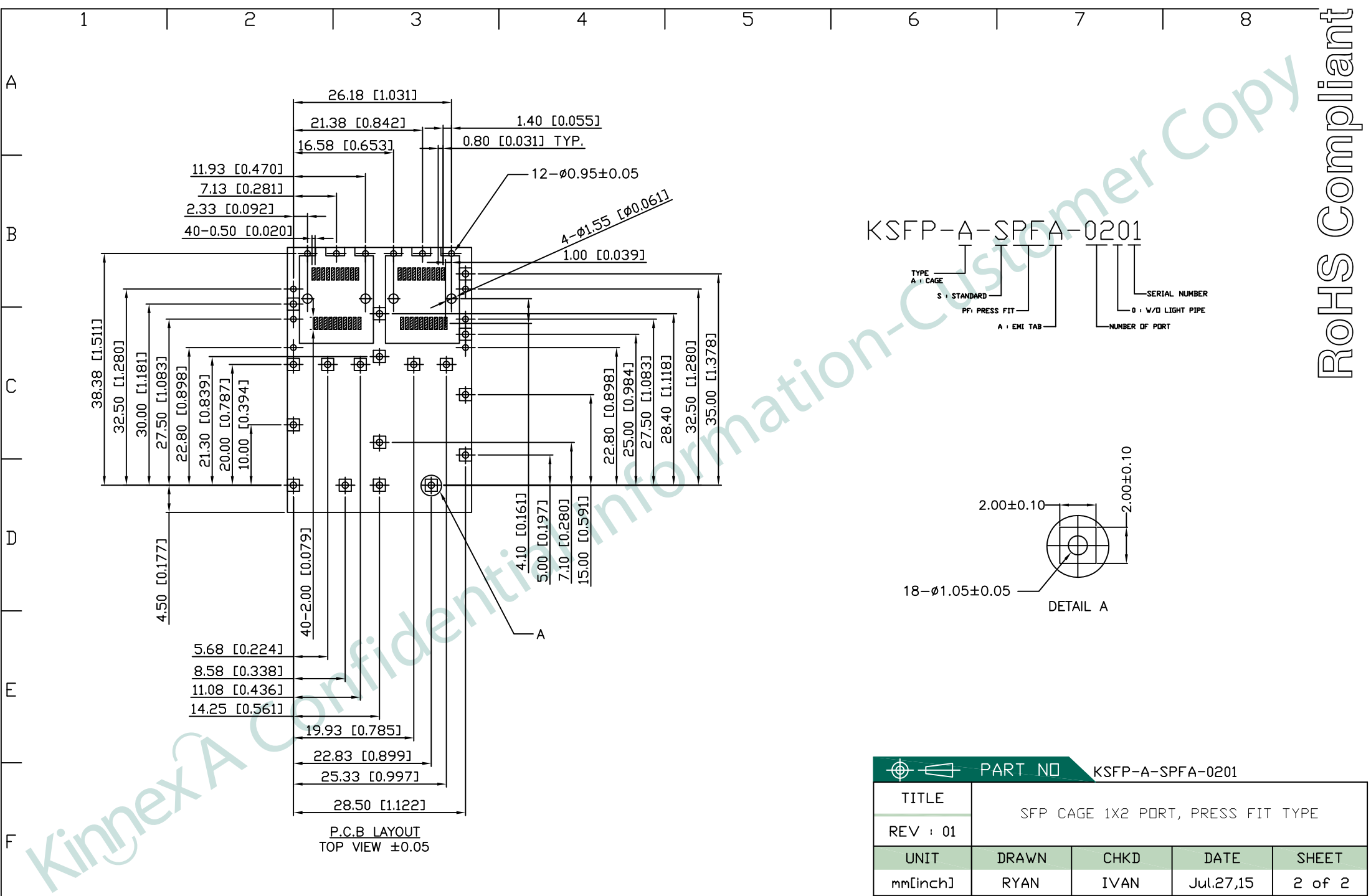


NOTE:  
 1.MATERIAL: COPPER ALLOY,NICKEL PLATED  
 2.PLATING: 100U" NI FOR ALL  
 3.PACKING: 45PCS/TRAY ;450PCS/CARTON  
 UNSPECIFIED TOLERANCE: .XXX ±0.10[0.004]  
 .XX ±0.20[0.008]  
 .X ±0.30[0.012]

 PART NO		KSFP-A-SPFA-0201		
TITLE	SFP CAGE 1X2 PORT, PRESS FIT TYPE			
REV : 01				
UNIT	DRAWN	CHKD	DATE	SHEET
mm[inch]	RYAN	IVAN	Jul.27,15	1 of 2



PART NO		KSFP-A-SPFA-0201		
TITLE	SFP CAGE 1X2 PORT, PRESS FIT TYPE			
REV : 01				
UNIT	DRAWN	CHKD	DATE	SHEET
mm[inch]	RYAN	IVAN	Jul.27,15	2 of 2