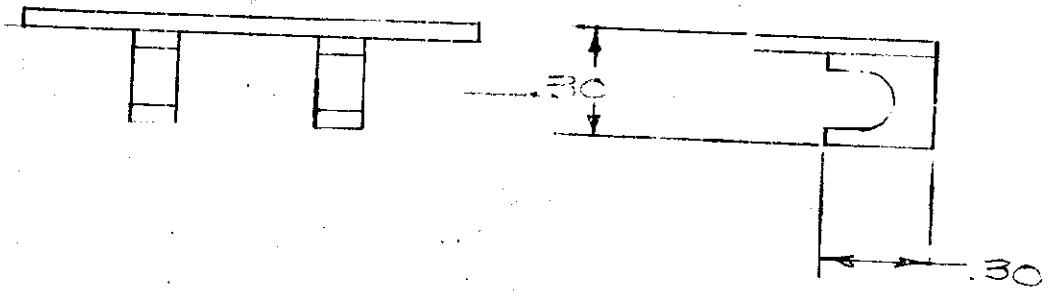


DRAWING MADE IN AMERICAN PROJECTION

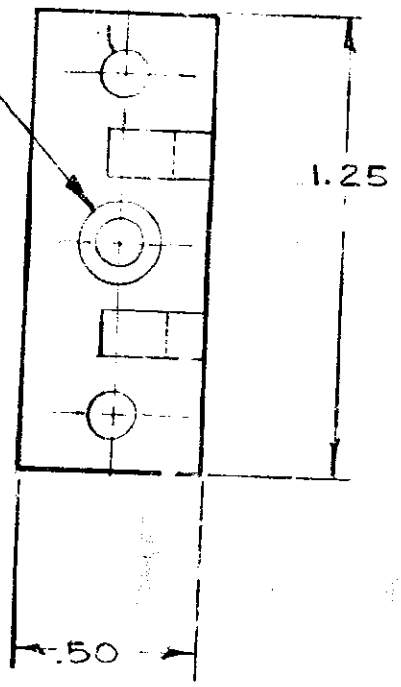
NUMBER 395772

© 1968 A-M-P INCORPORATED  
 A-M-P PRODUCTS COVERED BY PATENTS  
 AND/OR PATENTS PENDING.



.23 DIA C/SINK  
 @ 82° INCLUDED  
 ANGLE

.13 DIA THRU.  
 2 PLACES



395772-1 AS SHOWN

DIMENSIONS IN INCHES. DO NOT SCALE PRINT.

PRINT DIST  
 12/0

MATERIAL STAINLESS STEEL		HEAT TREAT [Symbol]		COATING OR PLATING PASSIVATED	
UNLESS OTHERWISE SPECIFIED		REMOVE BURRS, BREAK SHARP EDGES .015 F MAX DECIMALS: .00 = ±.02, .000 = ±.005, .0000 = ±.0005 ANGLES: 15°			
FIRST USED	WIRE RANGE	CLASS	TYPE 326494896		
P.P.P.	AREA	SCALE	AMP INCORPORATED HARRISBURG, PENNA.		
DR [Signature]	CHK [Signature]	APP	LOC SA	NO 395772	REV 0
LTR	REVISION RECORD	ECN	DR	DATE	REL
RELEASED FOR [Signature]			NAME HOOK-FRONT BD		