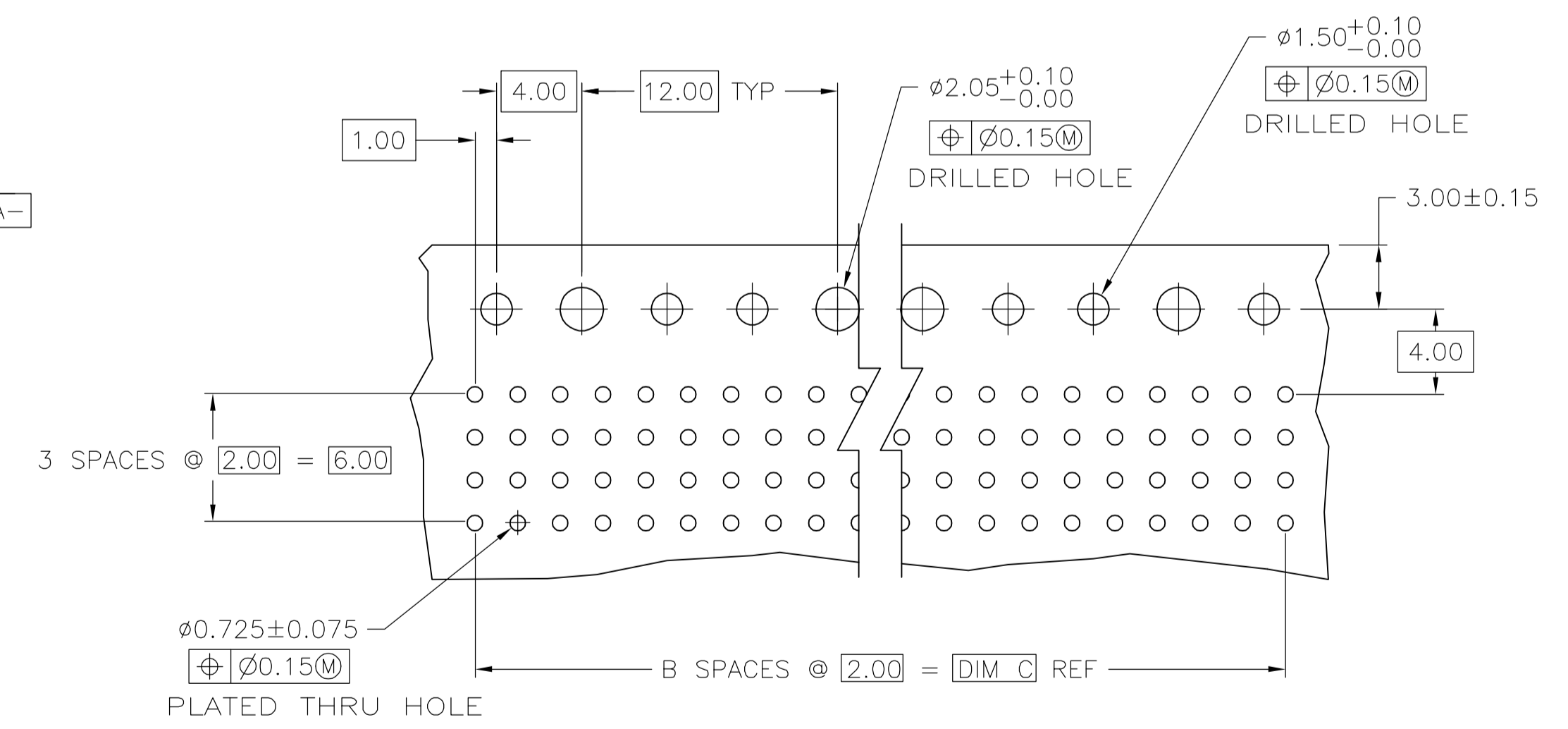
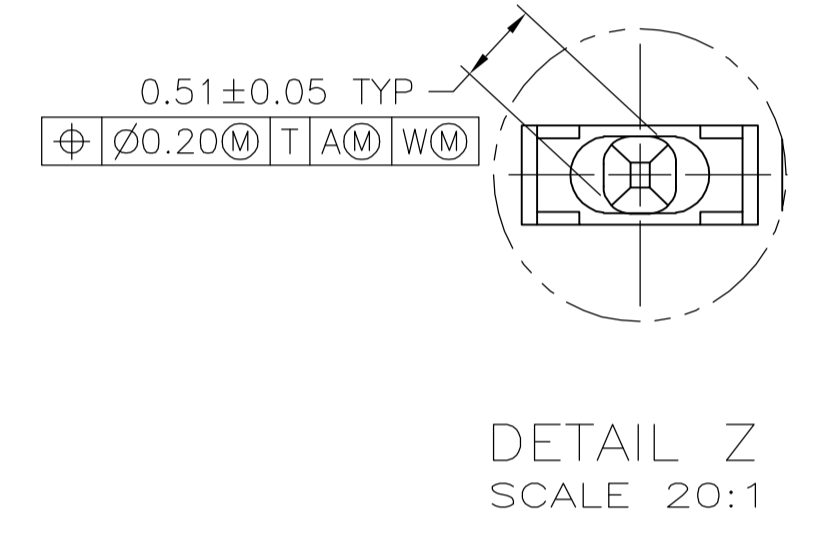
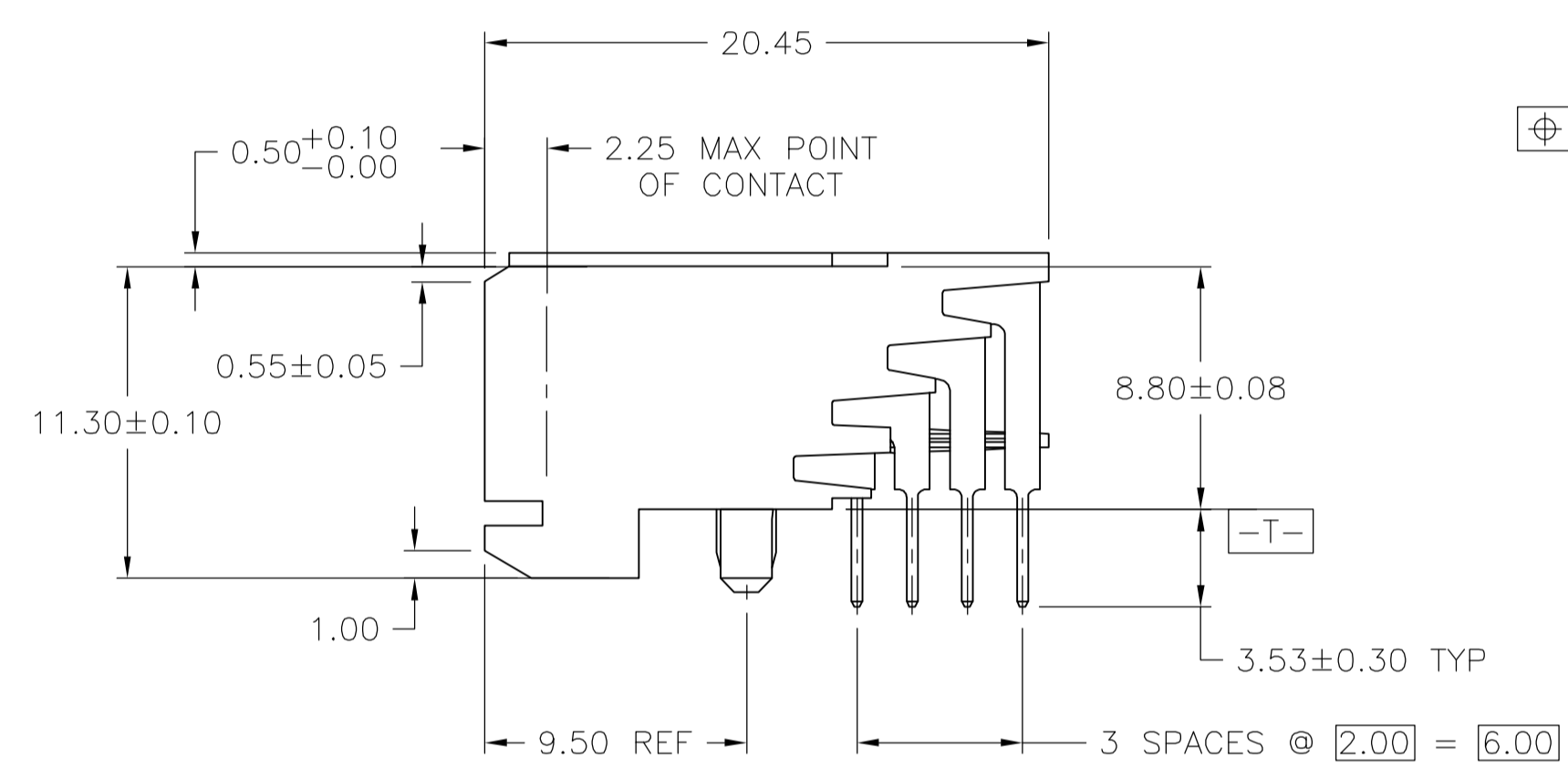
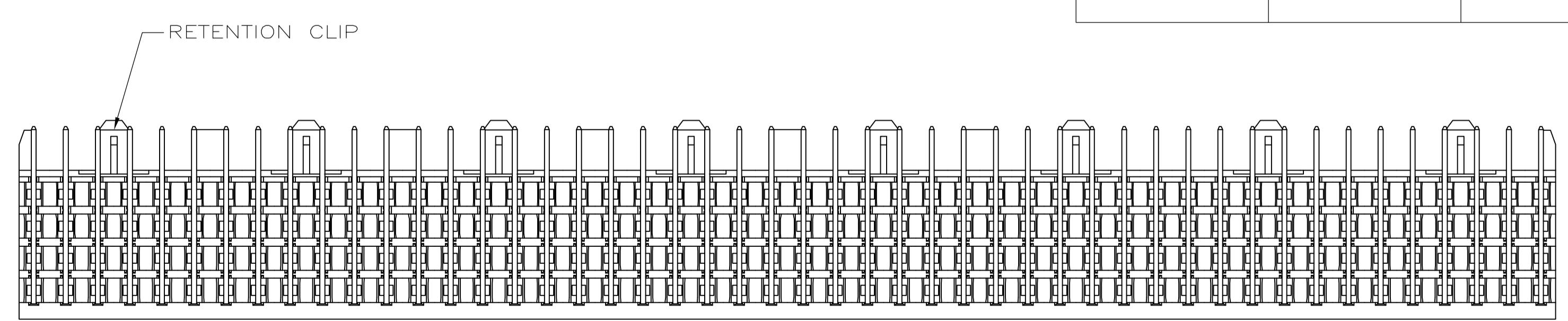
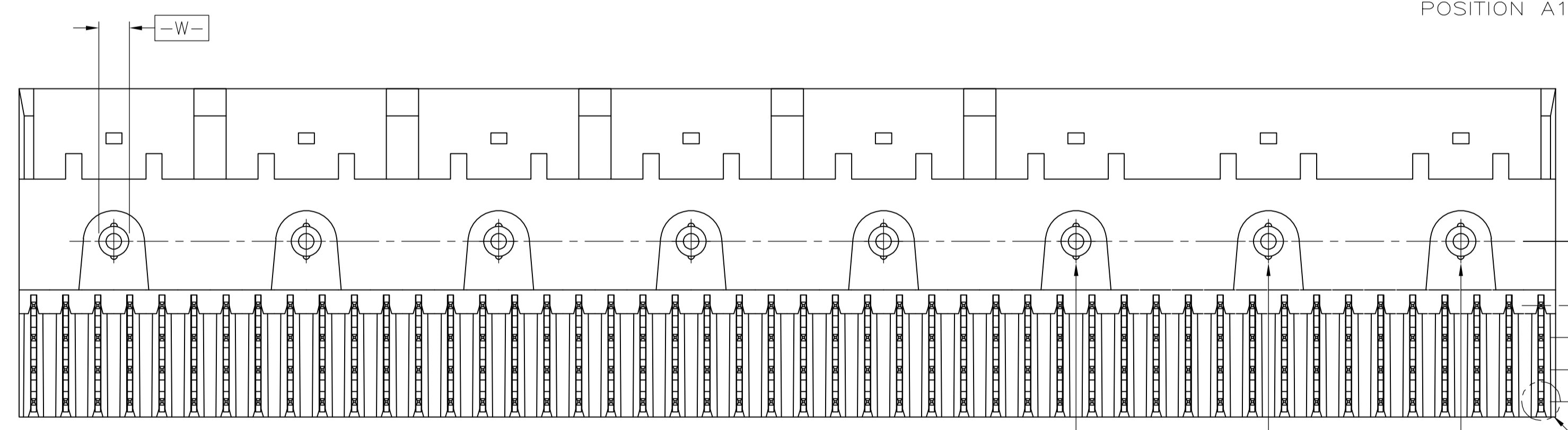
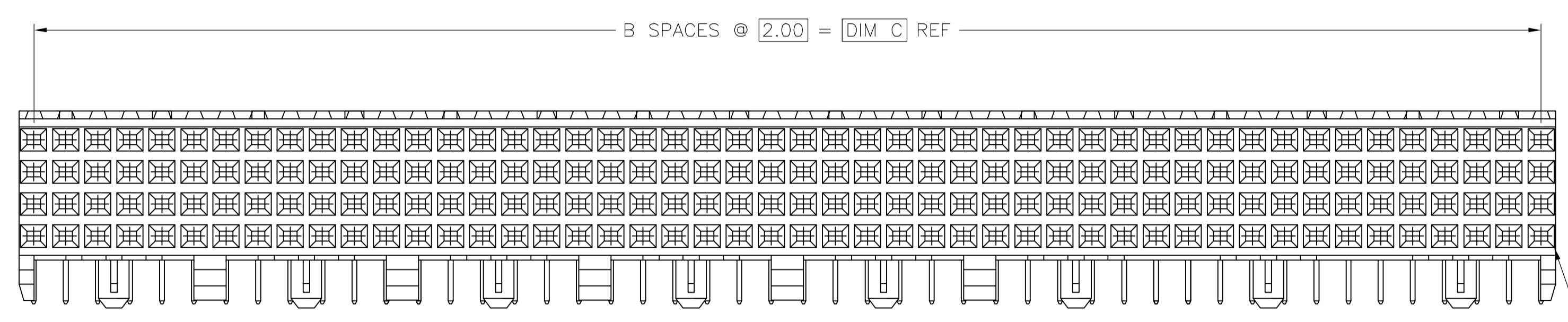
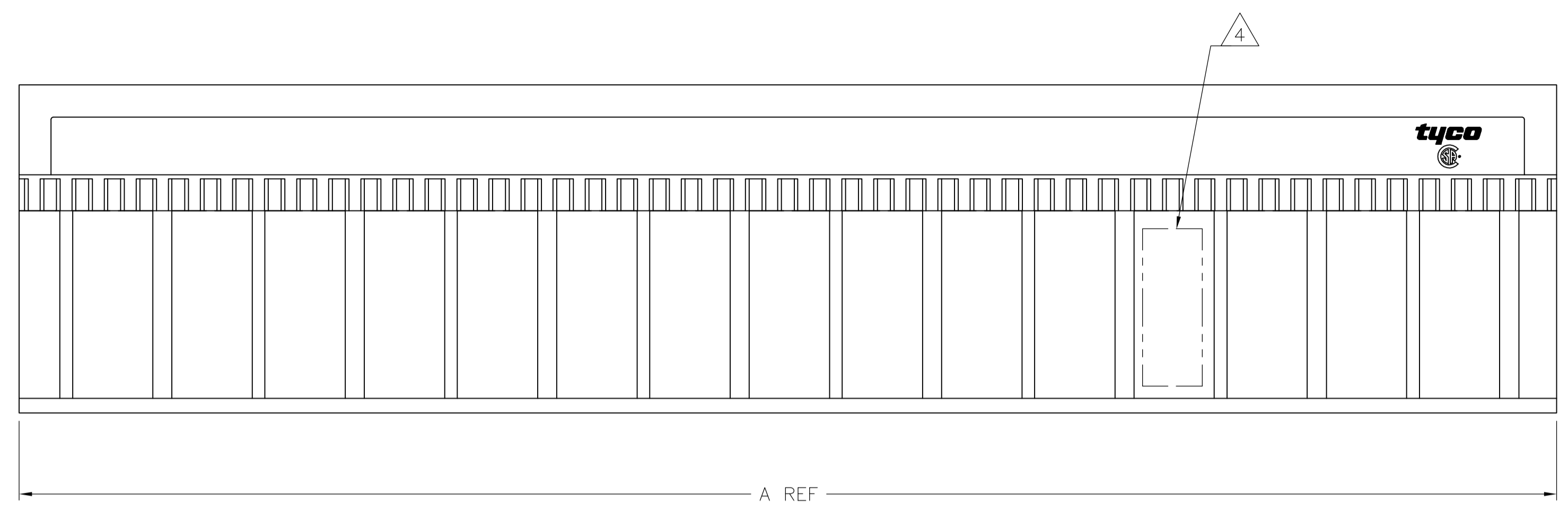


LOC		DIST		REVISIONS				
P	LTR	DESCRIPTION	DATE	DNW	APVD			
0		RELEASED PER EC 0512-0327-04	01SEP04	BM	RW			

- ① HOUSING MATERIAL: LIQUID CRYSTAL POLYMER.  
COLOR: NATURAL.
- ② CONTACT MATERIAL: PHOSPHOR-BRONZE.
- ③ CONTACT FINISH:  
UNDERPLATE (ENTIRE CONTACT) -  
0.00127 MIN. NICKEL PER SAE-AMS-QQ-N-290.  
ON MATING SURFACES -  
CONFORMS TO ALL TESTING SPECIFIED FOR TELCORDIA  
UNCONTROLLED ENVIRONMENT  
ON LEADS -  
0.00381 MIN. TIN PER ASTM B 545, OVER UNDERPLATE  
LUBRICATION (MIN MATING SURFACES):  
SURFACE CONDITIONER AFTER PLATING.
- ④ PART MARKING, LOCATED APPROXIMATELY AS SHOWN.



RECOMMENDED CIRCUIT PATTERN  
 PER IPC-D300 TYPE II, CLASS C  
 (COMPONENT SIDE)

94	47	95.88	③	192	5536520-1
C	B	A	FINISH	NO OF POSN	PART NUMBER

THIS DRAWING IS A CONTROLLED DOCUMENT.		DWG BY: MCMASTER	01SEP04	<b>tyco</b> Electronics	Tyco Electronics Corporation Harrisburg, Pa 17105-3608	
DIMENSIONS: mm		CHK: R. WERTZ	01SEP04		NAME: RECEPTACLE ASSEMBLY, SIGNAL MODULE, Z-PACK 2mm FB, 4 ROW, 3.53mm LEAD LENGTH	
TOLERANCES UNLESS OTHERWISE SPECIFIED:		APP'D: R. WERTZ	01SEP04	PRODUCT SPEC: -		
0 PLC ± -		APPLICATION SPEC: -		SIZE: A1		
1 PLC ± .13		RESTRICTED TO: -		CAGE CODE: 00779		
2 PLC ± .13		WEIGHT: -		DRAWING NO: 5536520		
3 PLC ± .13		CUSTOMER DRAWING		SCALE: 4:1		
4 PLC ± .13		SHEET: 1 OF 1		REV: 0		
ANGLES ± -		SHEET: 1 OF 1		REV: 0		