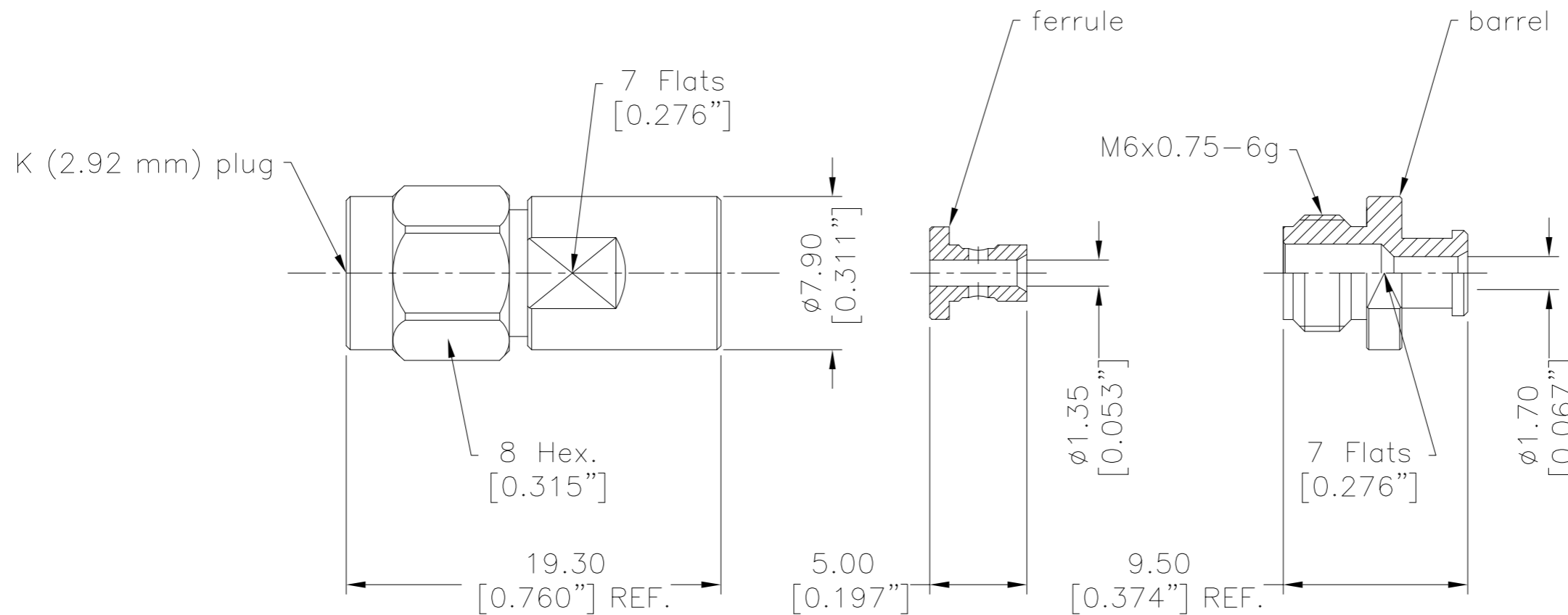


| SYM | REVISION DESCRIPTION    | DFTM    | DATE       | APPD | DATE       |
|-----|-------------------------|---------|------------|------|------------|
| A   | RELEASED FOR PRODUCTION | Patrick | 2021/04/13 | Tony | 2021/04/13 |
| B   | ECN-2022-08-001         | Joshua  | 2022/08/16 | Tony | 2022/08/16 |



**I. MATERIALS & FINISHES**

| Components  | Materials        | Finishes    | Thk. (μ") |
|-------------|------------------|-------------|-----------|
| Body/Shell  | Stainless Steel  | Passivation | --        |
| Contact Pin | Beryllium Copper | Gold        | 50        |
| Insulator   | PEI              | --          | --        |
| Ferrule     | Brass            | Gold        | 10        |
| Barrel      | Stainless Steel  | Passivation | --        |
| Gasket      | Silicone Rubber  | --          | --        |

**II. ELECTRICAL PROPERTIES**

|                                  |                 |
|----------------------------------|-----------------|
| Impedance:                       | 50 Ω            |
| Frequency Range:                 | DC to 40 GHz    |
| Dielectric Withstanding Voltage: | 500 V rms       |
| Insulation Resistance:           | ≥5000 MΩ        |
| VSWR:                            | ≤1.30           |
| Insertion Loss:                  | -0.1x√f(GHz) dB |

All Material and Plating of Parts Meet TIMES Document: WI-RD-003

**III. ENVIRONMENTAL PROPERTIES**

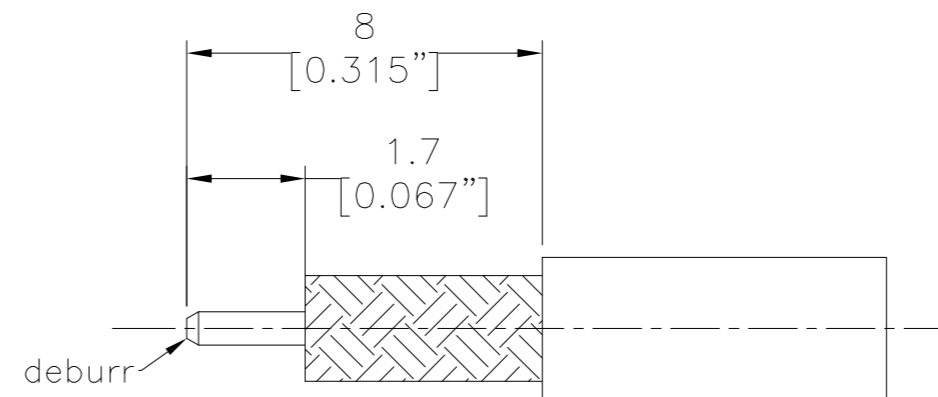
|                    |                                |
|--------------------|--------------------------------|
| Temperature Range: | -40°C to +125°C                |
| Thermal Shock:     | MIL-STD-202, Meth.107, Cond. B |
| Vibration:         | MIL-STD-202, Meth.204, Cond. D |
| Shock:             | MIL-STD-202, Meth.213, Cond. I |
| Climatic Class:    | IEC 60068 55/155/21            |
| RoHS:              | Compliant                      |

**IV. MECHANICAL PROPERTIES**

|                                |                |
|--------------------------------|----------------|
| Center Contact:                | Spring Finger  |
| Outer Contact:                 | Solder         |
| Coupling Nut Torque:           | 7.1-9.7 in.lbs |
| Cbl-Connector Retention Force: | 10 lbs         |
| Durability:                    | 500 Cycles     |


**V. TOOLINGS & ACCESSORIES**

N/A



RECOMMENDED CABLE STRIPPING DIM'S  
Connector Adds: 12.6 mm

Interface Compatible with Standard:  
IEC 61169-35

| UNLESS OTHERWISE SPECIFIED  |     | DFTM:     | Joshua     | <br><b>EZ-PT047-KM-SS</b><br>K (2.92 mm) Male (Plug) Straight Non-Solder<br>Pin Stainless Steel Connector for PT-047<br>Cable |      |            |     |     |           |     |   |
|---|-----|-----------|------------|--|------|------------|-----|-----|-----------|-----|---|
| ALL DIMENSIONS ARE IN mm<br>MACHINED SURFACES FINISH 1.6 RMS MAX.<br>REMOVE ALL BURRS 0.15X45° MAX. BREAK<br>MACHINE CORNERS 0.15X45° D MAX. FILLET<br>R. TOLERANCES ON DECIMALS<br>.X ±0.15 .XX ±0.1<br>ANGLES ±2° FRACTIONS ± N/A |     | DATE      | 2022/08/16 |  |      |            |     |     |           |     |   |
|   |     | CHKD      | Monica     |  |      |            |     |     |           |     |   |
|   |     | DATE      | 2022/08/16 |  |      |            |     |     |           |     |   |
|   |     | APPD      | Tony       |  |      |            |     |     |           |     |   |
| SCALE:  | N/A | DWG SIZE: | A3         | DO NOT SCALE DRAWING   | DATE | 2022/08/16 | SHT | 1/1 | 3190-6877 | REV | B |