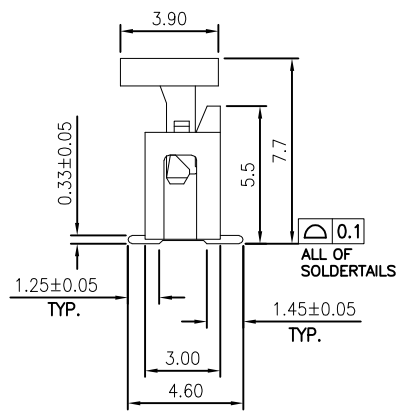
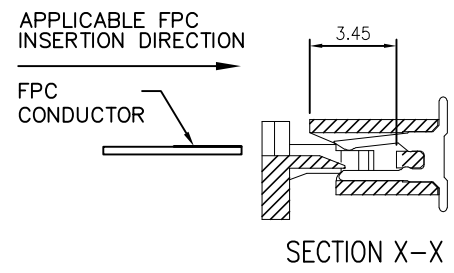
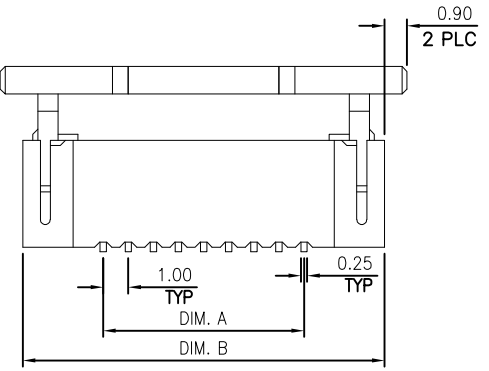
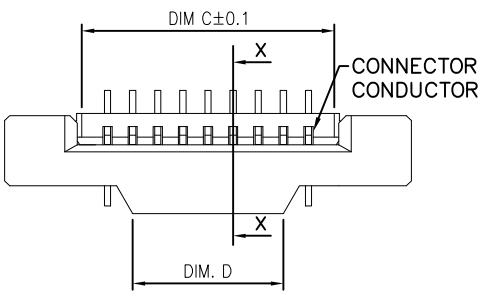
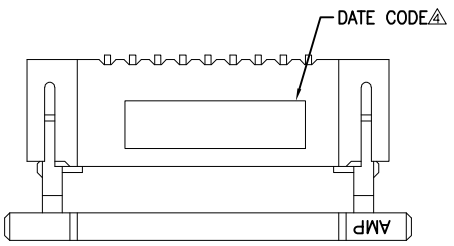
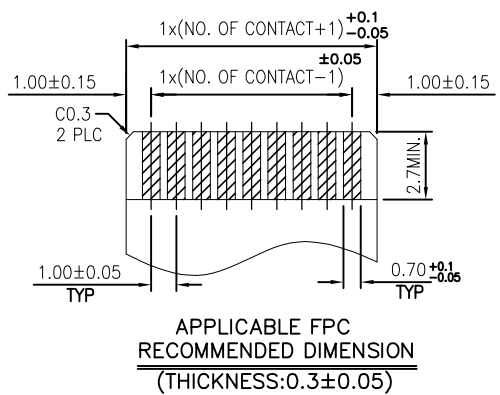


THIS DRAWING IS UNPUBLISHED. RELEASED FOR PUBLICATION
 © COPYRIGHT BY TYCO ELECTRONICS CORPORATION. ALL RIGHTS RESERVED.

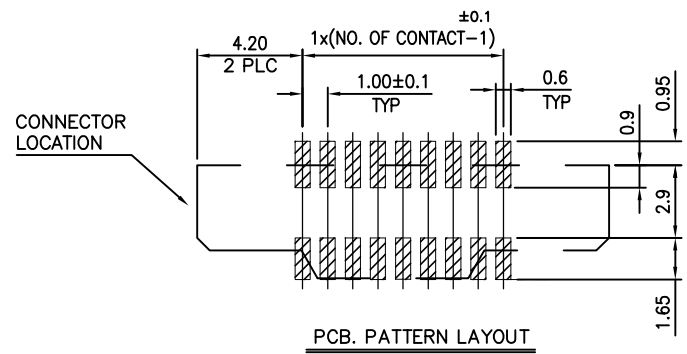
LOC		DIST		REVISIONS			
P	LTR	DESCRIPTION		DATE	DWN	APVD	
DW	-	B		REVISED (ECR-17-004265)	24MAR17	HX	WK



- NOTES:
- MATERIAL:
 - HOUSING: THERMOPLASTIC (NYLON 9T) UL94V-0; COLOR: BLACK.
 - ACTUATOR: THERMOPLASTIC (NYLON 9T) UL94V-0; COLOR: BLACK.
 - CONTACTS: PHOSPHOR BRONZE
 - FINISH:
 - CONTACT:
 - $3 \mu\text{m}$ ($120 \mu\text{\AA}$) MATTE-TIN PLATING OVERALL.
 - $1.27 \mu\text{m}$ ($50 \mu\text{\AA}$) MIN. NICKEL UNDERPLATING OVERALL.
 - RECOMMENDED PCB THICKNESS : 1.0mm
 - WITHOUT DATE CODE FOR 8 POSITION UNDER.
 - REFLOW SOLDER CAPABLE TO 260° PER TE SPEC. 109-201, CONDITION B.



37	41.06	45.6	39.0	40	4-1775695-0
36	40.06	44.6	38.0	39	3-1775695-9
35	39.06	43.6	37.0	38	3-1775695-8
34	38.06	42.6	36.0	37	3-1775695-7
33	37.06	41.6	35.0	36	3-1775695-6
32	36.06	40.6	34.0	35	3-1775695-5
31	35.06	39.6	33.0	34	3-1775695-4
30	34.06	38.6	32.0	33	3-1775695-3
29	33.06	37.6	31.0	32	3-1775695-2
28	32.06	36.6	30.0	31	3-1775695-1
27	31.06	35.6	29.0	30	3-1775695-0
26	30.06	34.6	28.0	29	2-1775695-9
25	29.06	33.6	27.0	28	2-1775695-8
24	28.06	32.6	26.0	27	2-1775695-7
23	27.06	31.6	25.0	26	2-1775695-6
22	26.06	30.6	24.0	25	2-1775695-5
21	25.06	29.6	23.0	24	2-1775695-4
20	24.06	28.6	22.0	23	2-1775695-3
19	23.06	27.6	21.0	22	2-1775695-2
18	22.06	26.6	20.0	21	2-1775695-1
17	21.06	25.6	19.0	20	2-1775695-0
16	20.06	24.6	18.0	19	1-1775695-9
15	19.06	23.6	17.0	18	1-1775695-8
14	18.06	22.6	16.0	17	1-1775695-7
13	17.06	21.6	15.0	16	1-1775695-6
12	16.06	20.6	14.0	15	1-1775695-5
11	15.06	19.6	13.0	14	1-1775695-4
10	14.06	18.6	12.0	13	1-1775695-3
9	13.06	17.6	11.0	12	1-1775695-2
8	12.06	16.6	10.0	11	1-1775695-1
7	11.06	15.6	9.0	10	1-1775695-0
6	10.06	14.6	8.0	9	1775695-9
5	9.06	13.6	7.0	8	1775695-8
4	8.06	12.6	6.0	7	1775695-7
3	7.06	11.6	5.0	6	1775695-6
2	6.06	10.6	4.0	5	1775695-5
2	5.06	9.6	3.0	4	1775695-4
2	4.06	8.6	2.0	3	1775695-3
DIM D	DIM C	DIM B	DIM A	PDS.	PART NUMBER

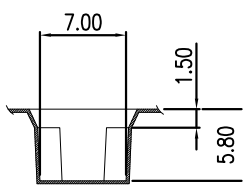


THIS DRAWING IS A CONTROLLED DOCUMENT.		DWN H. HUANG 28SEP2007	TE Connectivity NAME 1.0MM FPC, ZIF, VERTICAL, SMT TYPE	
DIMENSIONS: MM		CHK S. HOU 28SEP2007		
TOLERANCES UNLESS OTHERWISE SPECIFIED:		APVD W.J. KE 28SEP2007	PRODUCT SPEC 108-57080	
0 PLC ± 0.5		QUALIFICATION TEST REPORT 501-57098		
1 PLC ± 0.38		WEIGHT -		RESTRICTED TO -
2 PLC ± 0.25		SIZE A3		
3 PLC ± 0.15		CAGE CODE 00779		
4 PLC \pm		DRAWING NO C=1775695		
4 PLC ANGLES \pm		SCALE -		
MATERIAL SEE NOTE		SHEET 1 OF 2		
FINISH SEE NOTE		REV B		
		CUSTOMER DRAWING		

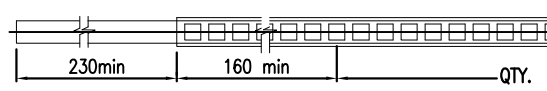
THIS DRAWING IS UNPUBLISHED. RELEASED FOR PUBLICATION
 © COPYRIGHT BY TYCO ELECTRONICS CORPORATION. ALL RIGHTS RESERVED.

LOC	DIST	REVISIONS				
P	LTR	DESCRIPTION	DATE	DWN	APVD	
DW	-	SEE SHEET 1.				

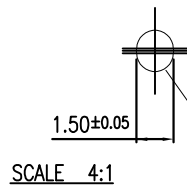
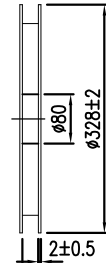
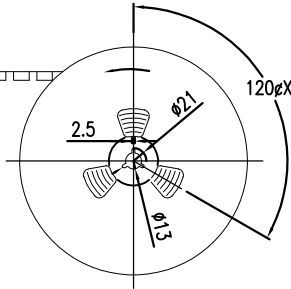
- NOTES:
- MATERIAL :
 - EMBOSSED CARRIER: PS
 - COVER TAPE: PS
 - SHIPPING CARTON: CORRUGATED FIBER
 - DIMENSION :
 - REEL: W=DIM C
 - SHIPPING BOX: L=350, W=350, H=350
 - QUANTITY : PRIMARY PACKING: 1000 PCS/REEL
 - PEELING RESISTANCE: 10.2gf~71.4gf.
 - PEELING SPEED: 300mm/minutes.



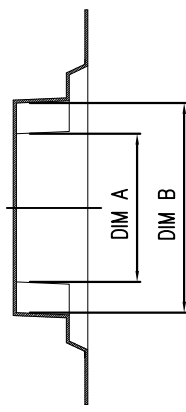
K-K' SECTION



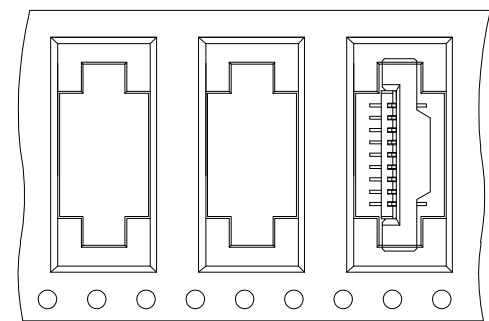
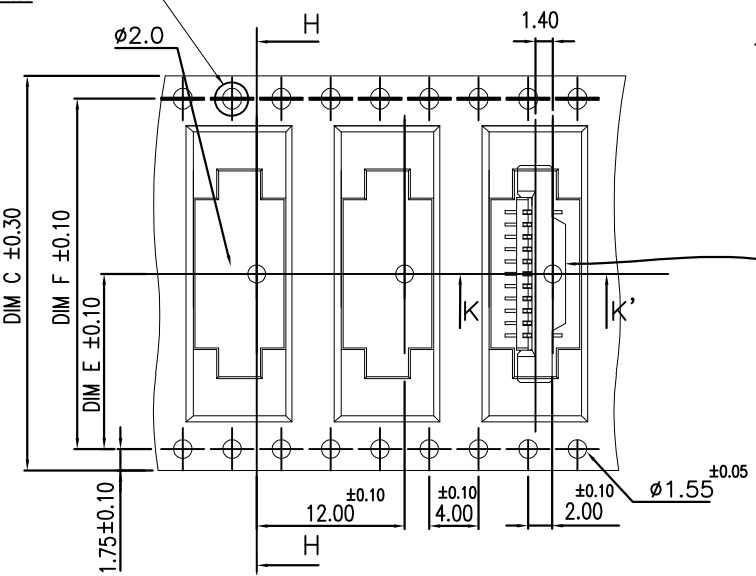
PULL OUT DIRECTION



SCALE 4:1



H-H' SECTION



FOR 3 TO 10 POS.

USER DIRECTION OF UNREELING

REELS/BOX	DIM F	DIM E	DIM D	DIM C	DIM B	DIM A	G/W (kg)	N/W (kg)	POS.	PART NUMBER
4	68.4	34.2	72.4	70	46	41	8.70	5.50	40	4-1775695-0
					45	40	8.57	5.37	39	3-1775695-9
					44	39	8.45	5.25	38	3-1775695-8
					43	38	11.60	7.68	37	3-1775695-7
					42	37	11.40	7.48	36	3-1775695-6
					41	36	11.21	7.29	35	3-1775695-5
					40	35	11.02	7.10	34	3-1775695-4
					39	34	10.83	6.91	33	3-1775695-3
					38	33	10.63	6.71	32	3-1775695-2
					37	32	10.44	6.52	31	3-1775695-1
					36	31	10.25	6.33	30	3-1775695-0
					35	30	10.06	6.14	29	2-1775695-9
					34	29	9.86	5.94	28	2-1775695-8
					33	28	9.67	5.75	27	2-1775695-7
					32	27	9.00	5.56	26	2-1775695-6
					31	26	8.80	5.36	25	2-1775695-5
					30	25	8.61	5.17	24	2-1775695-4
					29	24	8.42	4.98	23	2-1775695-3
					28	23	8.23	4.79	22	2-1775695-2
					27	22	8.03	4.59	21	2-1775695-1
					26	21	7.84	4.40	20	2-1775695-0
					25	20	7.65	4.21	19	1-1775695-9
					24	19	7.46	4.02	18	1-1775695-8
					23	18	7.26	3.82	17	1-1775695-7
					22	17	7.07	3.63	16	1-1775695-6
					21	16	9.20	5.16	15	1-1775695-5
					20	15	8.91	4.87	14	1-1775695-4
					19	14	8.62	4.58	13	1-1775695-3
					18	13	8.33	4.29	12	1-1775695-2
					17	12	8.04	4.00	11	1-1775695-1
					16	11	7.73	4.13	10	1-1775695-0
					15	10	7.41	3.81	9	1775695-9
					14	9	7.08	3.48	8	1775695-8
					13	8	6.76	3.16	7	1775695-7
					12	7	6.44	2.84	6	1775695-6
					11	6	6.12	2.52	5	1775695-5
					10	5	5.80	2.20	4	1775695-4
					9	4	5.48	1.88	3	1775695-3

THIS DRAWING IS A CONTROLLED DOCUMENT.		DWN	28SEP2007
		CHK	28SEP2007
		APVD	28SEP2007
		PRODUCT SPEC	
		APPLICATION SPEC	
		WEIGHT	
		CUSTOMER DRAWING	

TE Connectivity		NAME	
1.0MM FPC, ZIF, VERTICAL, SMT TYPE		H. HUANG	
SIZE	CAGE CODE	DRAWING NO	RESTRICTED TO
A3	00779	C=1775695	-
SCALE		SHEET	REV
-		2 of 2	B