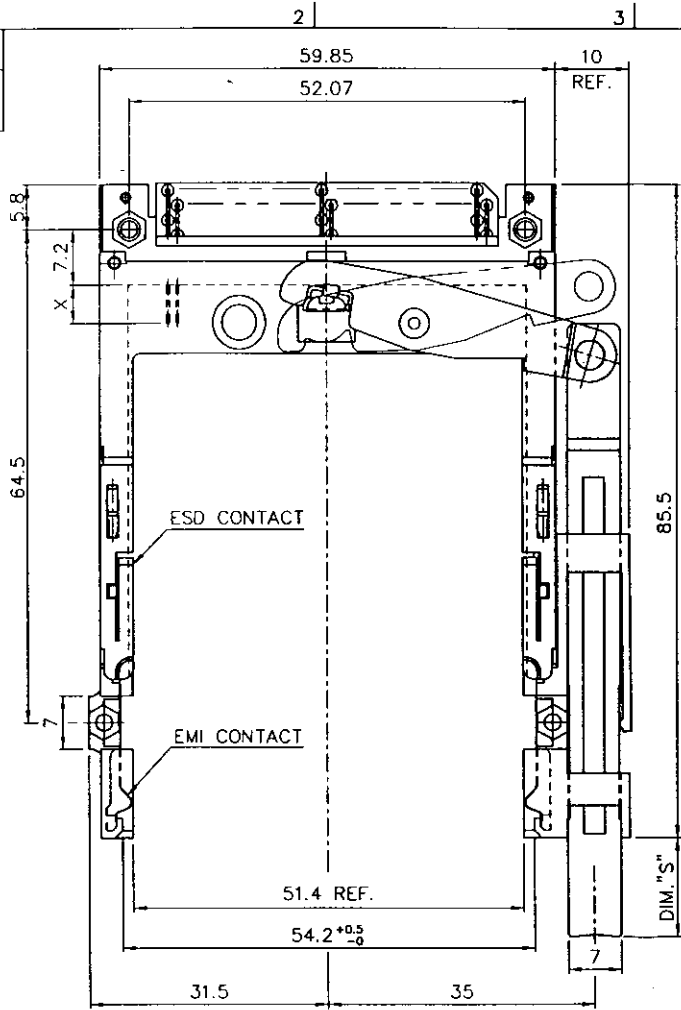


Tous droits strictement réservés. Reproduction ou communication o des tiers lnt sans autorisation écrite du propriétaire.  
 Property of BERG ELECTRONICS.  
 Copyright BERG ELECTRONICS by



All rights strictly reserved. Reproduction or issue to third parties in any form without written authority from the proprietor.  
 Property of BERG ELECTRONICS.  
 Copyright BERG ELECTRONICS by

PRODUCT NO.  
 88623-000\*\*  
 SEE TABLE I

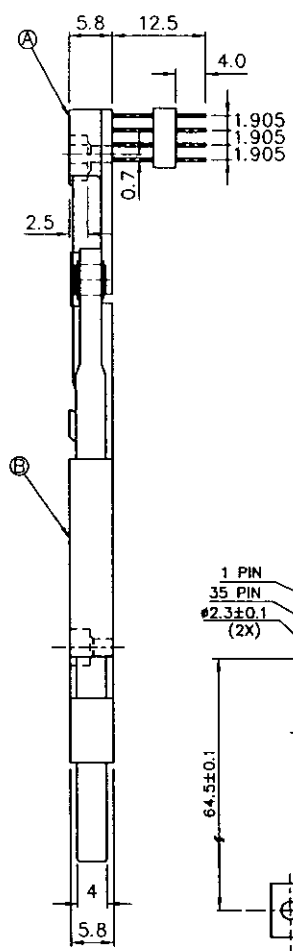
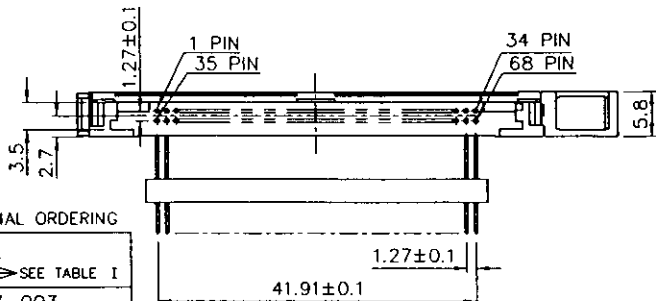


**	DIM"S"	PUSH ROD COLOR
AA	8.0	BLACK
AB	8.0	BLUE
AP	8.0	PURPLE
CA	13.0	BLACK
CB	13.0	BLUE
CP	13.0	PURPLE
FA	21.0	BLACK
FB	21.0	BLUE
FP	21.0	PURPLE

TABLE I

USE THE FOLLOWING P/N FOR OFFICIAL ORDERING

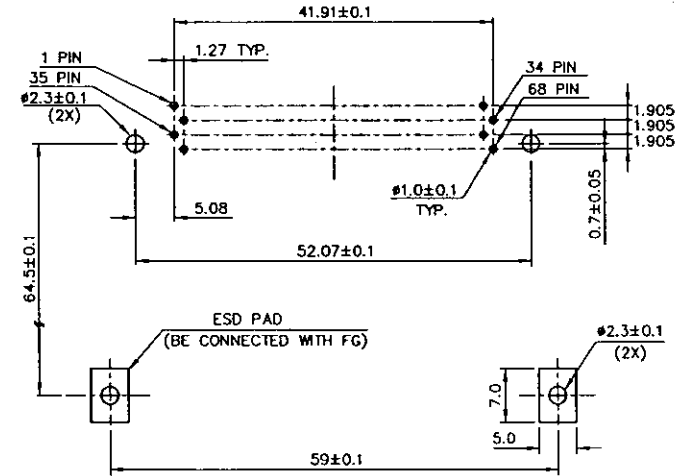
DESCRIPTION	P/N
Ⓐ EJECT MECH ASS'Y	92192-00** SEE TABLE I
Ⓑ HDR ASS'Y	94337-003



NOTES:

- EJECT FORCE : 3.5 Kg MAX.
- EJECT TRAVEL: 8.0mm
- MATERIAL
  - 3.1 PART Ⓐ (HEADER ASS'Y)  
 PLASTIC : HOUSING ...LCP UL94V-0 BLACK  
 PIN : PHOSPHOR BRONZE
  - 3.2 PART Ⓑ (EJECT MECHANISM ASS'Y)  
 PLASTIC : GUIDE: POLYPHTHARAMID UL94V-0 BLACK  
 PUSH ROD: POLYPHTHARAMID UL94V-0 BLACK  
 PLATE : STAINLESS  
 EMI CONTACT: PHOSPHOR BRONZE
- FINISH (PIN) -  
 UNDER PLATING : 0.5 μm MIN. Ni  
 CONTACT AREA : 0.1 μm MIN. GOLD OVER 0.5 μm MIN. Pd-Ni  
 SOLDER TAIL : 2.5 μm MIN. Sn-Pb
- DIM "X"

4.25±0.1	3.5±0.1	5.0±0.1
OTHERS	36,67	1,17,34,35,51,68



4 CARD INSERTION DIRECTION

mat'l code		tolerance unless otherwise specified		CUSTOMER COPY		BERG ELECTRONICS	
rev.	ecm no.	dr	date	linear	±0.30	projection	title
A	T60009	WL	01/05/98	angles	±2°	⊕	68P EJECTOR HEADER ASS'Y TYPE 1/2/3
		dr	WENDY CHEN	11/02/95	unit	mm/inch	product family
		enqr	JOSEPH HSIA	11/02/95	size	A3	code
		chr	JOSEPH HSIA	11/02/95	scale	1.5:1	TWN
		oppd	JENN TSAO	11/02/95			sheet
sheet index	revision	A				88623	
	sheet	1				1 OF 1	