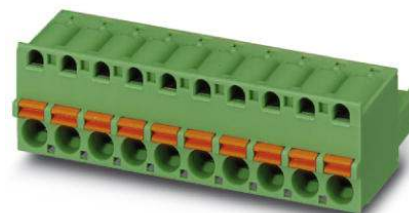



## FKC 2,5/18-ST-5,08

Order No.: 1875917

The figure shows a 10-position version of the product

<http://eshop.phoenixcontact.de/phoenix/treeViewClick.do?UID=1875917>

Plug component, Nominal current: 12 A, Rated voltage (III/2): 320 V,  
Number of positions: 18, Pitch: 5.08 mm, Color: green, Metal surface:  
Sn

| Commercial data          |  |
|--------------------------|--|
| GTIN (EAN)               | <br>4 017918 246518 |
| sales group              | E111   |
| Pack                     | 50 pcs.  |
| Customs tariff           | 85366990   |
| Catalog page information | Page 136 (CC-2005)   |

**Product notes**

WEEE/RoHS-compliant since:  
01/01/2003



<http://www.download.phoenixcontact.com>  
Please note that the data given here has been taken from the online catalog. For comprehensive information and data, please refer to the user documentation. The General Terms and Conditions of Use apply to Internet downloads.

| Technical data                |          |
|-------------------------------|----------|
| <b>Dimensions / positions</b> |          |
| Pitch                         | 5.08 mm  |
| Dimension a                   | 86.36 mm |
| Number of positions           | 18       |

**Technical data**

|                                     |                     |
|-------------------------------------|---------------------|
| Range of articles                   | FKC 2,5/..-ST       |
| Insulating material group           | I                   |
| Rated surge voltage (III/3)         | 4 kV                |
| Rated surge voltage (III/2)         | 4 kV                |
| Rated surge voltage (II/2)          | 4 kV                |
| Rated voltage (III/2)               | 320 V               |
| Rated voltage (II/2)                | 630 V               |
| Connection in acc. with standard    | EN-VDE              |
| Nominal current $I_N$               | 12 A                |
| Nominal voltage $U_N$               | 250 V               |
| Nominal cross section               | 2.5 mm <sup>2</sup> |
| Maximum load current                | 12 A                |
| Insulating material                 | PA                  |
| Inflammability class acc. to UL 94  | V0                  |
| Internal cylindrical gage           | A2                  |
| Stripping length                    | 10 mm               |
| Nominal voltage, UL/CUL Use Group B | 250 V               |
| Nominal current, UL/CUL Use Group B | 10 A                |
| Nominal voltage, UL/CUL Use Group D | 300 V               |
| Nominal current, UL/CUL Use Group D | 10 A                |

**Connection data**

|  |                      |
|--|----------------------|
| Conductor cross section solid min.   | 0.2 mm <sup>2</sup>  |
| Conductor cross section solid max.   | 2.5 mm <sup>2</sup>  |
| Conductor cross section stranded min.                                      | 0.2 mm <sup>2</sup>  |
| Conductor cross section stranded max.                                      | 2.5 mm <sup>2</sup>  |
| Conductor cross section stranded, with ferrule without plastic sleeve min. | 0.25 mm <sup>2</sup> |
| Conductor cross section stranded, with ferrule without plastic sleeve max. | 2.5 mm <sup>2</sup>  |
| Conductor cross section stranded, with ferrule with plastic sleeve min.    | 0.25 mm <sup>2</sup> |
| Conductor cross section stranded, with ferrule with plastic sleeve max.    | 2.5 mm <sup>2</sup>  |
| Conductor cross section AWG/kcmil min.                                     | 24                   |
| Conductor cross section AWG/kcmil max                                      | 12                   |

|   |                     |
|---|---------------------|
| 2 conductors with same cross section, stranded, TWIN ferrules with plastic sleeve, min. | 0.5 mm <sup>2</sup> |
| 2 conductors with same cross section, stranded, TWIN ferrules with plastic sleeve, max. | 1.5 mm <sup>2</sup> |
| Minimum AWG according to UL/CUL   | 26                  |
| Maximum AWG according to UL/CUL   | 12                  |

**Certificates / Approvals**



Certification CB, CUL, GOST, UL, VDE-PZI

**Accessories**

| Item            | Designation    | Description  |
|-----------------|----------------|--|
| <b>Assembly</b> |                |  |
| 1876880         | STZ 8-FKC-5,08 | Strain relief for snapping into the latching chambers of the plug components, 8-pos. |
| 1876877         | STZ 4-FKC-5,08 | Strain relief for snapping into the latching chambers of the plugs, 4-pos.           |

|                |                          |   |
|----------------|--------------------------|---|
| <b>Marking</b> |                          |   |
| 1051993        | B-STIFT                  | Marker pen, for manual labeling of unprinted Zack strips, smear-proof and waterproof, line thickness 0.5 mm   |
| 0804293        | SK 5,08/3,8:FORTL.ZAHLEN | Marker card, printed horizontally, self-adhesive, 12 identical decades marked 1-10, 11-20 etc. up to 91-(99)100, sufficient for 120 terminal blocks                         |
| 0805085        | SK 5,08/3,8:SO           | Marker card, special printing, self-adhesive, labeled acc. to customer requirements, 12 identical marker strips per card, max. 25-position labeling per strip, color: white |
| 0805412        | SK 5,08/3,8:UNBEDRUCKT   | Marker cards, unprinted, with pitch divisions, self-adhesive, 10-section marker strips, 12 strips per card, can be labeled with the M-PEN                                   |

|                     |           |   |
|---------------------|-----------|---|
| <b>Plug/Adapter</b> |           |   |
| 1734634             | CP-MSTB   | Keying profile, is inserted into the slot on the plug or inverted header, red insulating material |
| 0201689             | MPS-IH BU | Insulating sleeve, Color: blue  |
| 0201702             | MPS-IH GN | Insulating sleeve, Color: green   |

|         |           |                                 |
|---------|-----------|---------------------------------|
| 0201676 | MPS-IH RD | Insulating sleeve, Color: red   |
| 0201663 | MPS-IH WH | Insulating sleeve, Color: white |
| 0201744 | MPS-MT    | Test plugs                      |
| 0201647 | RPS       | Reducing plug, Color: gray      |

**Tools**

|         |             |  |
|---------|-------------|--|
| 1205053 | SZS 0,6X3,5 | Actuation tool, for ST terminal blocks, insulated, also suitable for use as a bladed screwdriver, size: 0.6 x 3.5 x 100 mm, 2-component grip, with non-slip grip |
|---------|-------------|--|

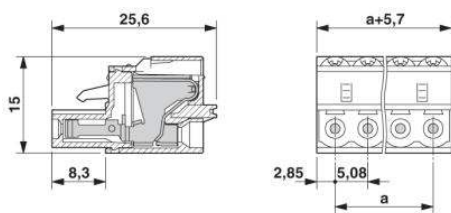
**Additional products**

| Item           | Designation           | Description  |
|----------------|-----------------------|--|
| <b>General</b> |                       |  |
| 1880465        | EMSTBA 2,5/18-G-5,08  | Header, Nominal current: 12 A, Rated voltage (III/2): 320 V, Number of positions: 18, Pitch: 5.08 mm, Color: green, Metal surface: Sn, Assembly: Press-in  |
| 1915893        | EMSTBVA 2,5/18-G-5,08 | Header, Nominal current: 12 A, Rated voltage (III/2): 320 V, Number of positions: 18, Pitch: 5.08 mm, Color: green, Metal surface: Sn, Assembly: Press-in  |
| 1786336        | IC 2,5/18-ST-5,08     | Plug component, Nominal current: 12 A, Rated voltage (III/2): 400 V, Number of positions: 18, Pitch: 5.08 mm, Color: green, Metal surface: Sn  |
| 1824007        | ICC 2,5/18-STZ-5,08   | Plug component, Nominal current: 12 A, Rated voltage (III/2): 320 V, Number of positions: 18, Pitch: 5.08 mm, Color: green, Metal surface: Sn, Corresponding male crimp contacts with current [A] and conductor cross section range [mm <sup>2</sup> ] data: 10A/ICC-MT 0,5-1,0 (3190577); 10A/ICC-MT 0,5-1,0 BA (3190603); 12A/ICC-MT 1,5-2,5 (3190580); 12A/ICC-MT 1,5-2,5 BA (3190593). BA = Bandkontakte |
| 1762525        | MDSTB 2,5/18-G1-5,08  | Header, Nominal current: 10 A, Rated voltage (III/2): 320 V, Number of positions: 18, Pitch: 5.08 mm, Color: green, Metal surface: Sn, Assembly: Soldering. In combination with MVSTB or FKCV plug components, both an MVSTBW (or FKCVW) and an MVSTBR plug (or FKCVR) must be used. Combination with TMSTBP plug components is not possible!  |
| 1762664        | MDSTBV 2,5/18-G1-5,08 | Header, Nominal current: 10 A, Rated voltage (III/2): 320 V, Number of positions: 18, Pitch: 5.08 mm, Color: green, Metal surface: Sn, Assembly: Soldering. In combination with MVSTB or FKCV plug components, both an MVSTBW (or FKCVW) and an MVSTBR plug (or FKCVR) must be used. Combination with TMSTBP plug components is not possible!  |
| 1759172        | MSTB 2,5/18-G-5,08    | Header, Nominal current: 12 A, Rated voltage (III/2): 320 V, Number of positions: 18, Pitch: 5.08 mm, Color: green, Metal surface: Sn, Assembly: Soldering   |

|         |                        |  |
|---------|------------------------|--|
| 1770876 | MSTB 2,5/18-G-5,08-LA  | Header, Nominal current: 12 A, Rated voltage (III/2): 320 V, Number of positions: 18, Pitch: 5.08 mm, Color: green, Metal surface: Sn, Assembly: Soldering |
| 1757404 | MSTBA 2,5/18-G-5,08    | Header, Nominal current: 12 A, Rated voltage (III/2): 320 V, Number of positions: 18, Pitch: 5.08 mm, Color: green, Metal surface: Sn, Assembly: Soldering |
| 1768105 | MSTBA 2,5/18-G-5,08-LA | Header, Nominal current: 12 A, Rated voltage (III/2): 320 V, Number of positions: 18, Pitch: 5.08 mm, Color: green, Metal surface: Sn, Assembly: Soldering |
| 1758173 | MSTBV 2,5/18-G-5,08    | Header, Nominal current: 12 A, Rated voltage (III/2): 320 V, Number of positions: 18, Pitch: 5.08 mm, Color: green, Metal surface: Sn, Assembly: Soldering |
| 1808625 | MSTBV 2,5/18-GEH-5,08  | Header, Nominal current: 12 A, Rated voltage (III/2): 320 V, Number of positions: 18, Pitch: 5.08 mm, Color: green, Metal surface: Sn, Assembly: Soldering |
| 1755891 | MSTBVA 2,5/18-G-5,08   | Header, Nominal current: 12 A, Rated voltage (III/2): 320 V, Number of positions: 18, Pitch: 5.08 mm, Color: green, Metal surface: Sn, Assembly: Soldering |
| 1735727 | MSTBW 2,5/18-G-5,08    | Header, Nominal current: 12 A, Rated voltage (III/2): 320 V, Number of positions: 18, Pitch: 5.08 mm, Color: green, Metal surface: Sn, Assembly: Soldering |
| 1769625 | SMSTB 2,5/18-G-5,08    | Header, Nominal current: 12 A, Rated voltage (III/2): 320 V, Number of positions: 18, Pitch: 5.08 mm, Color: green, Metal surface: Sn, Assembly: Soldering |
| 1767533 | SMSTBA 2,5/18-G-5,08   | Header, Nominal current: 12 A, Rated voltage (III/2): 320 V, Number of positions: 18, Pitch: 5.08 mm, Color: green, Metal surface: Sn, Assembly: Soldering |

### Diagrams/Drawings

#### Dimensioned drawing



**Address**

PHOENIX CONTACT Deutschland GmbH  
Flachmarktstr. 8  
32825 Blomberg, Germany  
Phone +49 5235 3 12000  
Fax +49 5235 3 41200  
<http://www.phoenixcontact.de>



© 2011 Phoenix Contact  
Technical modifications reserved;