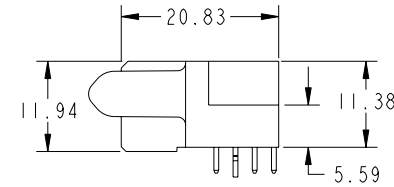
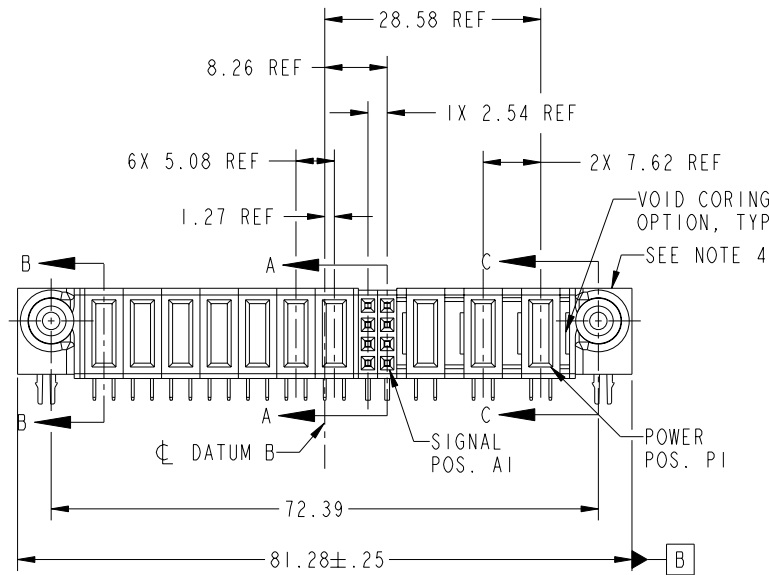
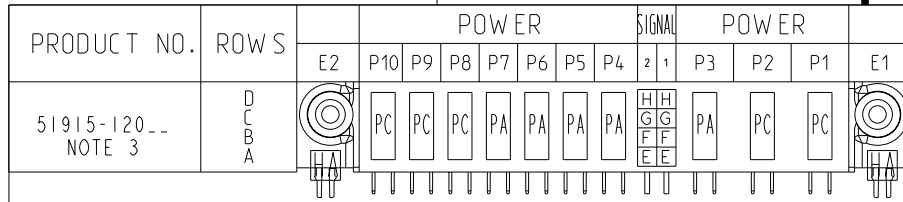


Tous droits strictement réservés. Reproduction ou communication o des tiers interdite sous quelque forme que ce soit sans autorisation écrite du propriétaire. Propriete de c FCI. Droits de reproduction FCI.



All rights strictly reserved. Reproduction or issue to third parties in any form whatever is not permitted without written authority from the proprietor. Property of FCI. Copyright FCI.



CODE	DIM "M" MATING LENGTH	CONTACT TYPE
PA	[1.07]	POWER
PC	[2.34]	POWER
H	[N/A]	SIGNAL
G	[N/A]	SIGNAL
F	[N/A]	SIGNAL
E	[N/A]	SIGNAL
HA	[N/A]	HOLD-DOWN

mat'l code SEE NOTE 2				tolerances unless otherwise specified		CUSTOMER	FCI www.fciconnect.com	
ltr	ecn no.	dr	date	linear	0.X ± 0.3	COPY	title	
A	DG06-0415	JMG	10/10/06	0.XX ± 0.13	projection		3ACP + 8S + 7P RIGHT ANGLE SOLDER RECEPTACLE	
				angles	0.XXX ± 0.051			product family
				dr	JM GUO 10/10/06	MM	PwrBlade	213
				engr	RYAN YUAN 10/10/06		size	sheet
				chr	BEER FU 10/10/06		A	51915-120
				appd	JOSEPH HSIA 10/10/06	scale	1:1	
sheet index	revision sheet	A 1	A 2	A 3	A 4	cage code		4
						22526		

Pro/E

3

cage code 22526

4

PDM: Rev:A

STATUS: Released

Printed: Dec 20, 2010

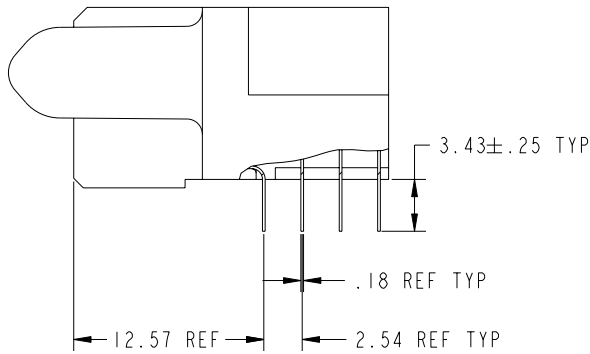
Tous droits strictement reserves. Reproduction ou communication a des tiers interdite sous quelque forme que ce soit sans autorisation ecrite du proprietaire. Propriete de c FCI. Droits de reproduction FCI.

All rights strictly reserved. Reproduction or issue to third parties in any form whatever is not permitted without written authority from the proprietor. Property of FCI. Copyright FCI.

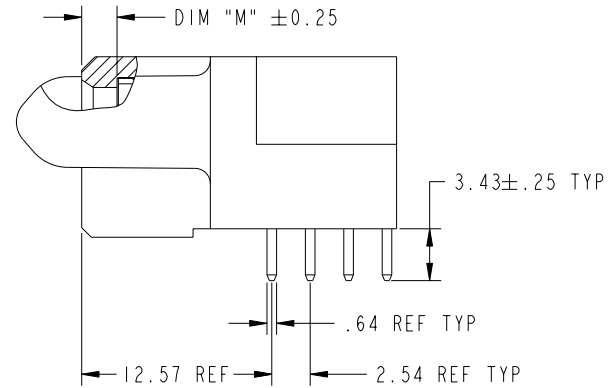


PRODUCT NUMBER

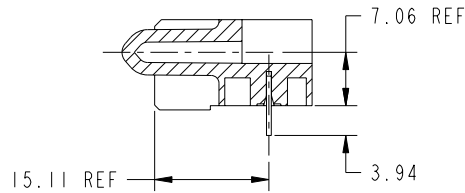
51915-120__
NOTE 3



BROKEN-OUT SECTION A-A
SCALE 2:1



BROKEN-OUT SECTION B-B
SCALE 2:1



SECTION C-C

mat'l code		SEE NOTE 2		tolerances unless otherwise specified		CUSTOMER		www.fciconnect.com	
ltr	ecn no.	dr	date	linear	0.X ± 0.3	COPY		title	
A					0.XX ± 0.13	projection		3ACP + 8S + 7P	
				angles	0.XXX ± 0.051			RIGHT ANGLE SOLDER RECEPTACLE	
				dr	JM GUO 10/10/06			product family PwrBlade code	
				enr	RYAN YUAN 10/10/06	size		213	
				chr	BEER FU 10/10/06	scale		sheet	
				appd	JOSEPH HSIA 10/10/06	1:1		2 of 4	
sheet index		revision sheet							



www.fciconnect.com

3ACP + 8S + 7P
RIGHT ANGLE SOLDER RECEPTACLE

product family PwrBlade code

size 213

dwg no 51915-120

sheet 2 of 4

cage code 22526

Pro/E

PDM: Rev:A

STATUS: Released

Printed: Dec 20, 2010

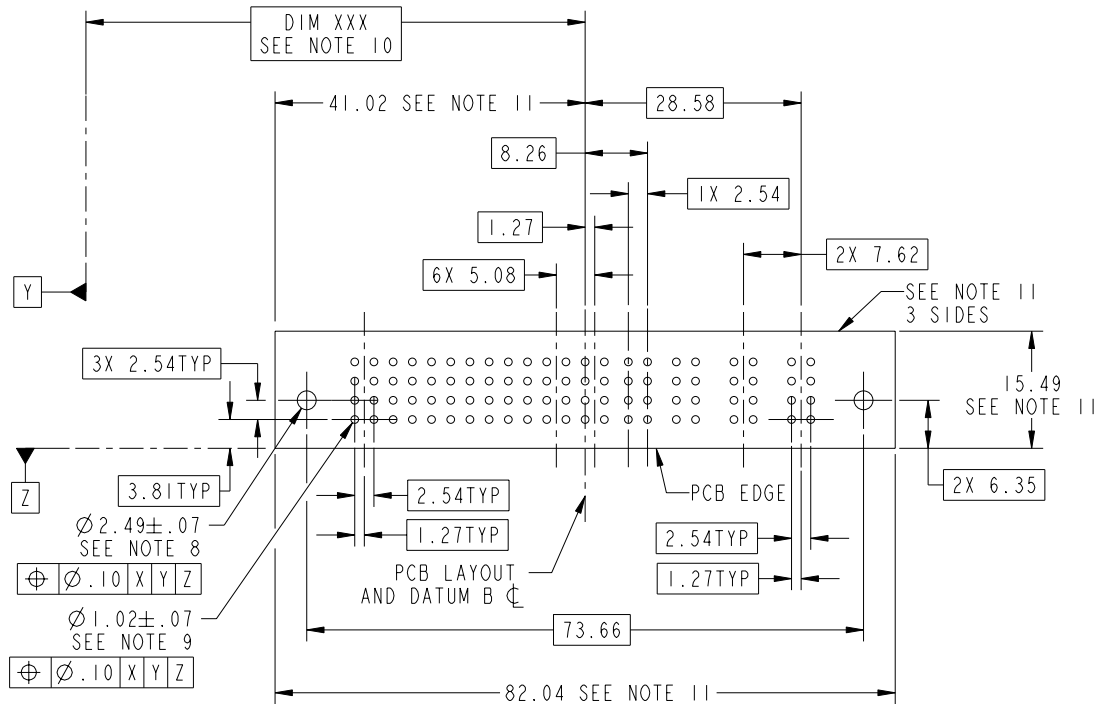
Tous droits strictement reserves. Reproduction ou communication a des tiers interdite sous quelque forme que ce soit sans autorisation ecrite du proprietaire. Propriete de c FCI. Droits de reproduction FCI.



All rights strictly reserved. Reproduction or issue to third parties in any form whatever is not permitted without written authority from the proprietor. Property of FCI. Copyright FCI.

PRODUCT NUMBER

51915-120__
NOTE 3



mat'l code				SEE NOTE		tolerances unless otherwise specified		CUSTOMER		FCI www.fciconnect.com	
ltr	ecn no.	dr	date	linear		0.X ± 0.3		COPY	title		
A						0.XX ± 0.13		projection	3ACP + 8S + 7P		
				angles		0.XXX ± 0.051			RIGHT ANGLE SOLDER RECEPTACLE		
				dr	JM GUO	10/10/06		MM	product family	PwrBlade	code
				enr	RYAN YUAN	10/10/06		← MM →	size	dwg no	213
				chr	BEER FU	10/10/06		scale	A	51915-120	sheet
				appd	JOSEPH HSIA	10/10/06		1:1			3 of 4
sheet index	revision sheet										

cage code 22526

Pro/E

PDM: Rev:A

STATUS: Released

Printed: Dec 20, 2010

Tous droits strictement reserves. Reproduction ou communication o des tiers interdite sous quelque forme que ce soit sans autorisation ecrite du proprietaire. Propriete de c FCI. Droits de reproduction FCI.



All rights strictly reserved. Reproduction or issue to third parties in any form whatever is not permitted without written authority from the proprietor. Property of FCI. Copyright FCI.

PRODUCT NUMBER

51915-120__
NOTE 3

NOTES:

1. DIMENSIONS AND TOLERANCES ARE IN ACCORDANCE WITH ASME Y14.5M, 1994 UNLESS OTHERWISE SPECIFIED.

CONNECTOR NOTES:

- 2. HOUSING MATERIAL: UL 94 V-0 GLASS FILLED
HIGH-TEMP THERMOPLASTIC
POWER CONTACT MATERIAL: COPPER ALLOY
SIGNAL PIN MATERIAL: COPPER ALLOY
- 3. PLATING:
51915-120,51915-120LF PLATING SPEC. WAS SHOWN IN THE PRINT OF 10064183.
- 4. MANUFACTURER'S NAME, P/N, AND DATE CODE TO APPEAR ON THIS SURFACE.
- 5. PRODUCT SPECIFICATION GS-12-149.
APPLICATION SPECIFICATION BUS-20-067.
- 6. PACKAGED IN TRAYS.

PCB NOTES:

- 7. ALL HOLE DIAMETERS ARE FINISHED HOLE SIZE.
- 8. MOUNTING HOLES, WHERE APPLICABLE, ARE UNPLATED.
- 9. $\varnothing 1.151 \pm 0.025$ DRILLED HOLES PLATED WITH 0.008 MIN SnPb OR Sn OVER 0.03 TO 0.08 Cu PLATING TO ACHIEVE $\varnothing 1.02 \pm .07$ HOLE.
- 10. "DIM XXX" TO BE DETERMINED BY THE CUSTOMER.
- 11. CONNECTOR KEEP-OUT ZONE.

mat'l code		SEE NOTE 2		tolerances unless otherwise specified		CUSTOMER		FCI		www.fciconnect.com	
ltr	ecn no.	dr	date	linear	$0.X \pm 0.3$	COPY		title 3ACP + 8S + 7P RIGHT ANGLE SOLDER RECEPTACLE			
A					$0.XX \pm 0.13$	projection					
				angles	$0.XXX \pm 0.051$	MM		product family		PwrBlade	code
				dr	JM GUO	10/10/06	scale		size	dwg no	213
				enrg	RYAN YUAN	10/10/06	1:1		A	51915-120	sheet
				chr	BEER FU	10/10/06					4 of 4
				appd	JOSEPH HSIA	10/10/06					
sheet index	revision sheet										



www.fciconnect.com



MM

scale 1:1

product family PwrBlade code

size dwg no 213

A 51915-120 sheet

4 of 4

cage code 22526

Pro/E

PDM: Rev:A

STATUS: Released

Printed: Dec 20, 2010