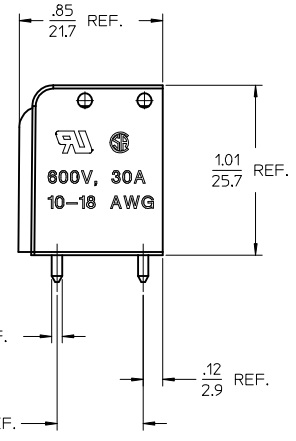
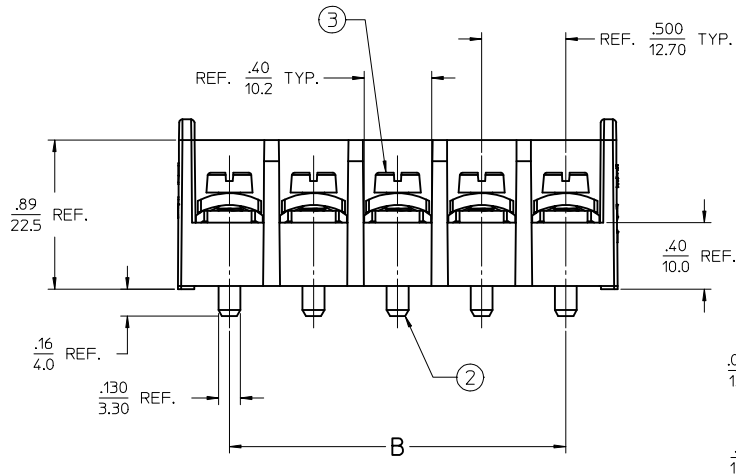
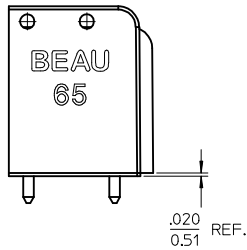
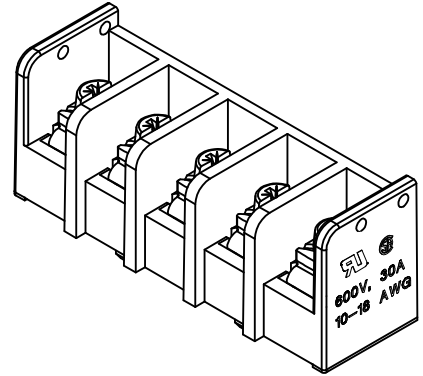
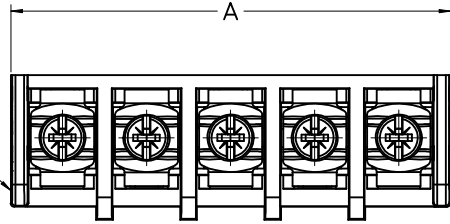
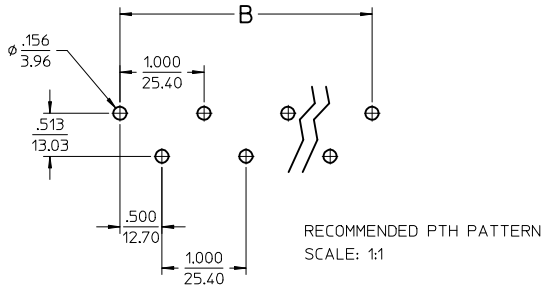


| POLES | MATERIAL NO. | ENGINEERING NO. | A | | B | |
|-------|--------------|--------------------|------|-------|------|-------|
| | | | IN | mm | IN | mm |
| 5 | 386598001 | 65505-C-P-88-SPCL- | 2.61 | 66.3 | 2.00 | 50.8 |
| 8 | 386598002 | 65508-C-P-88-SPCL- | 4.11 | 104.4 | 3.50 | 88.9 |
| 10 | 386598003 | 65510-C-P-88-SPCL- | 5.11 | 129.8 | 4.50 | 114.3 |



- NOTES:
1. MATERIAL: SEE TABLE
 2. FINISH: SEE TABLE
 3. WIRE RANGE: 18-10 AWG
 4. ELECTRICAL SPECS:
VOLTAGE: 600V
CURRENT: 30A
 5. TIGHTENING TORQUE: 16 IN. LBS.
 6. "XX" REFERS TO QUANTITY OF CIRCUITS
 7. PART IS RoHS COMPLIANT

| ITEM | QTY. | DESCRIPTION | MATERIAL | FINISH |
|------|------|----------------------------|----------|------------------|
| 3 | XX | SCREW & WASHER, M4 X 0.7 | STEEL | ZINC/CL CHROMATE |
| 2 | XX | TERMINAL, PC SHORT, 600V | BRASS | TIN PLATED |
| 1 | 1 | INSULATOR, SINGLE ROW, BTS | PBT | BLACK |

| | | | | | | |
|--|-----------------|---|--|--------------|--------------|---|
| RELEASED IEC NO: IPG2015-0952 2014/11/20 DRWRSTONE CHYKDB RUPERT 2014/12/02 APPR: JFMURPHY 2014/12/17 | QUALITY SYMBOLS | GENERAL TOLERANCES (UNLESS SPECIFIED) | DIMENSION STYLE | SCALE | DESIGN UNITS | THIRD ANGLE PROJECTION |
| | =0 =0 | mm INCH 4 PLACES ± --- ± --- 3 PLACES ± --- ± .005 2 PLACES ± 0.13 ± .01 1 PLACE ± 0.3 ± --- 0 PLACE ± --- ± --- ANGULAR ± 1° DRAFT WHERE APPLICABLE MUST REMAIN WITHIN DIMENSIONS | IN/MM DRAWN BY DATE RSTONE 2014/11/20 CHECKED BY DATE B RUPERT 2014/12/02 APPROVED BY DATE JFMURPHY 2014/12/17 | 2:1 | INCH | THIS DRAWING CONTAINS INFORMATION THAT IS PROPRIETARY TO MOLEX INCORPORATED AND SHOULD NOT BE USED WITHOUT WRITTEN PERMISSION |
| A | DESCRIPTION | SEE CHART | MATERIAL NO. | DOCUMENT NO. | SHEET NO. | 1 OF 1 |