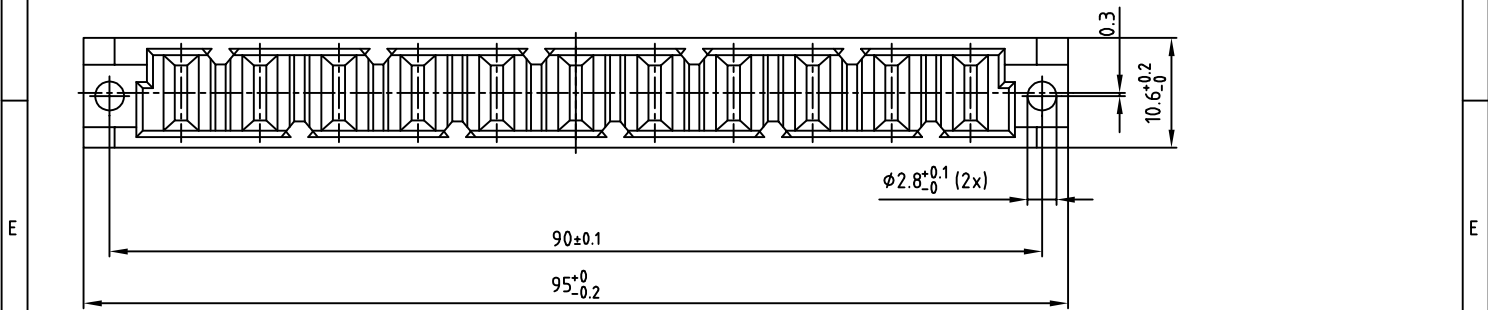
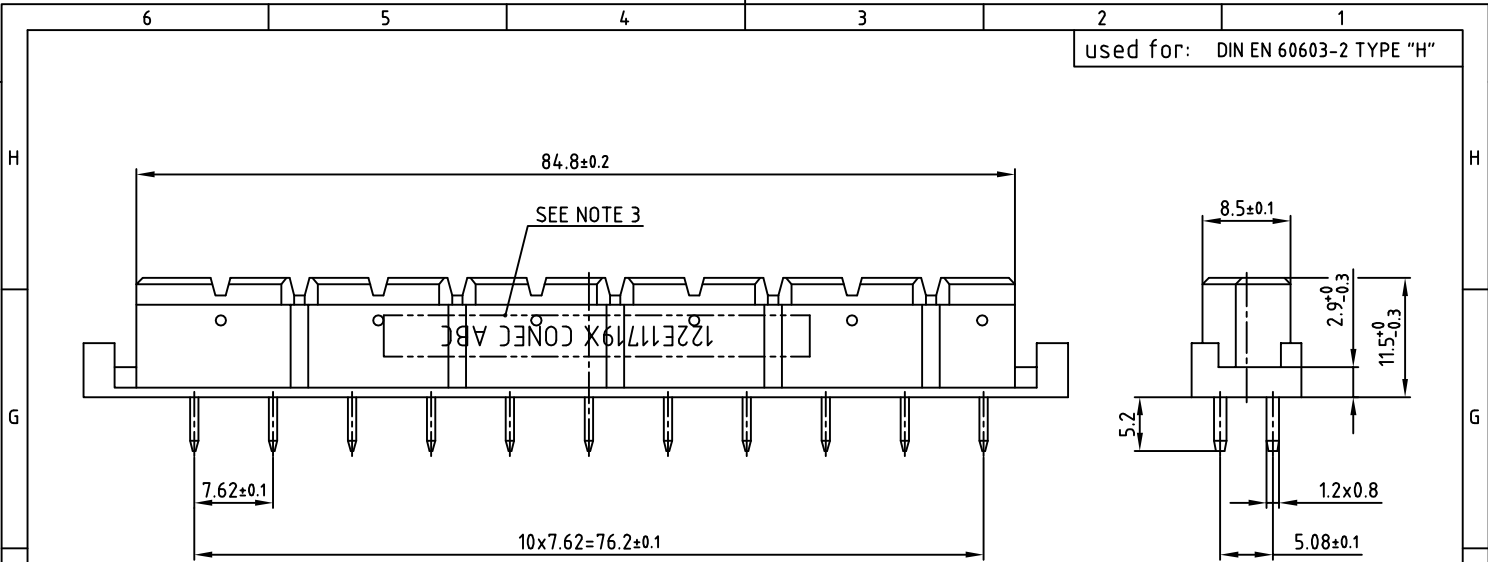


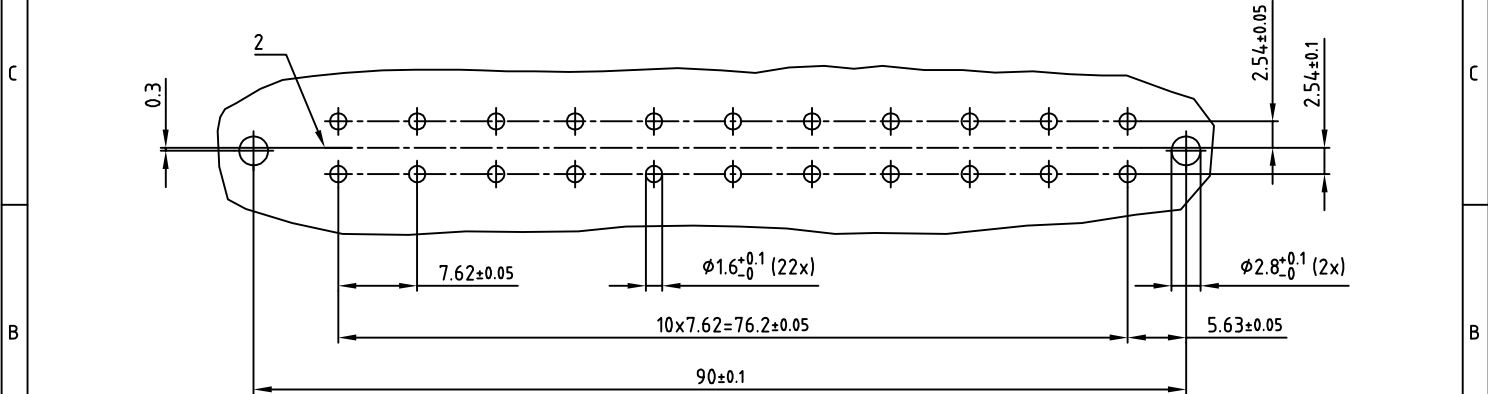
used for: DIN EN 60603-2 TYPE "H"



NOTES:

1. INSULATORS: PC GF UL 94 V-1, GREY
2. CONTACTS: COPPER ALLOY
PLATING: SILVER
500 MATING CYCLES
3. CONNECTOR IS PART MARKED: 122E11719X CONEC ABC

P.C.B. HOLE DRILLINGS



THIS DRAWING MAY NOT BE COPIED OR REPRODUCED IN ANY WAY, AND MAY NOT BE PASSED ON TO A THIRD PARTY, WITHOUT WRITTEN PERMISSION. OWNERSHIP AND COPYRIGHT OF CONEC GMBH DO NOT ALTER CAD DRAWING BY HAND	tolerance		dim. in mm	scale: 2:1
	material: SEE NOTES			title: FEMALE CONNECTOR TYPE "H" 11pos. FASTON and 22pos. SOLDER PIN STRAIGHT with coding
	2001	date	name	dwg no: 12K1A786
	drawn	20.03.	Henneboel	DIN-A 3
	appd.	20.03.	Mickenbecker	sh: 1/1
norm: DIN EN 60603-2		d-old	part no: 122E11719X	
a Original				
rev.	description			date

Directive 2002/95/EC RoHS compliant