

DESCRIPTION

EV3431-L-00A Evaluation Board is designed to demonstrate the capability of MP3431. The MP3431 is a 600kHz fixed frequency, wide input range, highly integrated boost converter. It starts from an input voltage as low as 2.7V, and supports up to 30W load power from 1-cell battery.

MP3431 adopts constant-off-time (COT) control topology providing fast transient response. One MODE pin supports mode selection of PSM, FCCM and USM in light load condition. And the integrated LS and HS MOSFET simplify the design and save BOM cost.

The MP3431 features with programmable Input current limit provides accurate over load protection while low-side MOSFET limits cycle-by-cycle inductor peak current. And It also features with programmable input UVLO and over temperature protection.

The MP3431 is available in a 13-pin 3mmx4mm QFN package.

Electrical Specification

Parameter	Symbol	Value	Units
Input Voltage	V _{IN}	3-8.4	V
Input Current Limit	I _{IN_LIMIT}	13	A
Output Voltage	V _{OUT}	9	V
Output Current	I _{OUT}	3.5	A

FEATURES

- 2.7V-to-13V Startup Voltage
- 0.8V-to-13V Operation Voltage
- Up to 16V Output Voltage
- Support 30W Average Power Load and 40W Peak Power Load from 3.3V
- Programmable Input Current Limit
- 21.5A Internal Switch Current Limit
- Integrated 6.5mΩ & 10mΩ Power MOSFET
- >95% Efficiency for 3.6V VIN to 9V/3A
- Selectable PSM, >23kHz USM, and FCCM Mode in Light Load Condition
- 600kHz Fixed Switching Frequency
- Adaptive COT for Fast Transient Response
- External Soft Start and Compensation Pin
- Programmable UVLO and Hysteresis
- 150°C Over Temperature Protection
- Available in 3x4mm QFN-13 Package

APPLICATIONS

- Notebook
- Bluetooth Speaker
- Portable POS System
- Quick Charger Power Bank

All MPS parts are lead-free and adhere to the RoHS directive. For MPS green status, please visit MPS website under Products, Quality Assurance page.

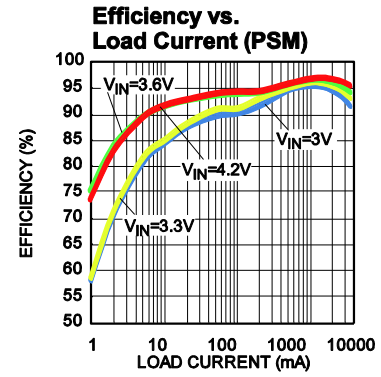
"MPS" and "The Future of Analog IC Technology" are Registered Trademarks of Monolithic Power Systems, Inc.

EV3431-L-00A EVALUATION BOARD

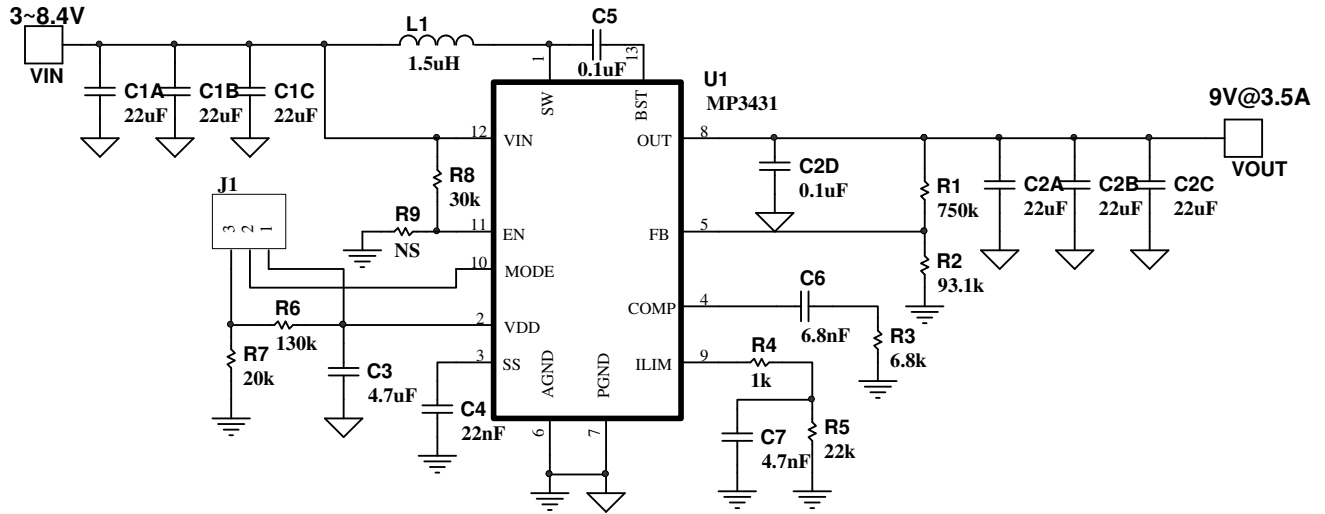


(L x W x H) 6.35cm x 6.35cm x 0.6cm

Board Number	MPS IC Number
EV3431-L-00A	MP3431GL



EVALUATION BOARD SCHEMATIC

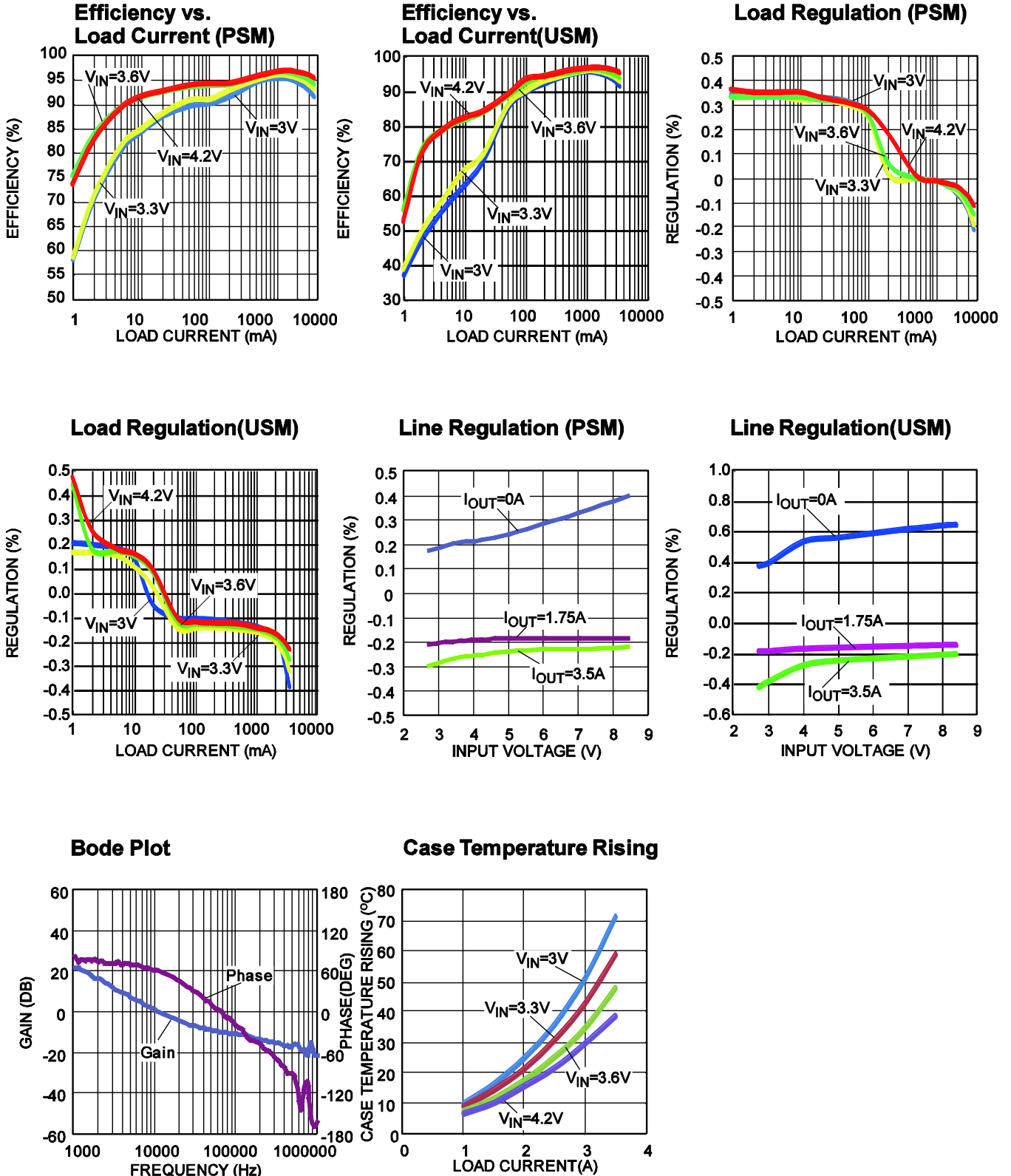


EV3431-L-00A BILL OF MATERIALS

Qty	Ref	Value	Description	Package	Manufacturer	Part Number
6	C1A, C1B, C1C, C2A, C2B, C2C	22µF	Ceramic Cap,25V,X5R	1210	MuRata	GRM32ER61E226KE15L
2	C2D,C5	0.1µF	Ceramic Cap,25V,X7R	0603	MuRata	GRM188R71E104KA01D
1	C3	4.7µF	Ceramic Cap,6.3V,X5R	0603	MuRata	GRM188R71J475KA01D
1	C4	22nF	Ceramic Cap,16V,X7R	0603	MuRata	GRM188R71C223KA01D
1	C6	6.8nF	Ceramic Cap,50V,X7R	0603	MuRata	GRM188R71H682KA01D
1	C7	4.7nF	Ceramic Cap,50V,X7R	0603	MuRata	GRM188R71H472KA01D
1	R1	750K	Film Res,1%	0603	ROYAL	RL0603FR-07750KL
1	R2	93.1K	Film Res,1%	0603	ROYAL	RL0603FR-0793K1L
1	R3	6.8K	Film Res,1%	0603	ROYAL	RL0603FR-076K8L
1	R4	1K	Film Res,1%	0603	ROYAL	RL0603FR-071KL
1	R5	22K	Film Res,1%	0603	ROYAL	RL0603FR-0722KL
1	R6	130K	Film Res,1%	0603	ROYAL	RL0603FR-07130KL
1	R7	20K	Film Res,1%	0603	ROYAL	RL0603FR-0720KL
1	R8	30K	Film Res,1%	0603	ROYAL	RL0603FR-0730KL
0	R9	NC				
1	L1	1.5µH	I _{RMS} =19A, R _{DC} =3.3mΩ	11.5x10mm	Sumida	104CDMCCDS-1R5MC-ND
1	J1	Jumper	Short Jumper, 2.54mm			Jumper
1	U1	MP3431	Boost converter	QFN 3X4mm	MPS	MP3431GL

EVB TEST RESULTS

$V_{IN} = 3.3V$, $V_{OUT} = 9V$, $L = 1.5\mu H$, $I_{OUT} = 3.5A$, PSM, $T_A = 25^\circ C$, unless otherwise noted.

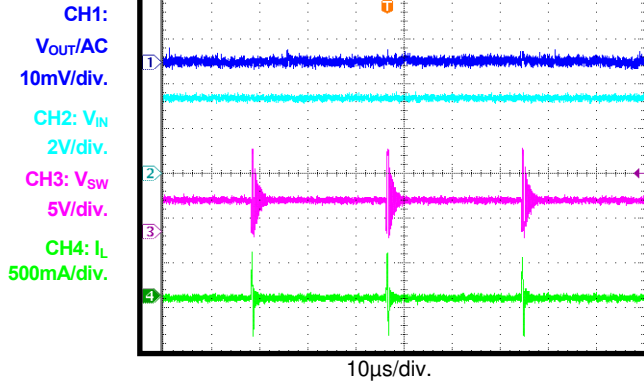


EVB TEST RESULTS (continued)

$V_{IN} = 3.3V$, $V_{OUT} = 9V$, $L = 1.5\mu H$, $I_{OUT} = 3.5A$, PSM, $T_A = 25^\circ C$, unless otherwise noted.

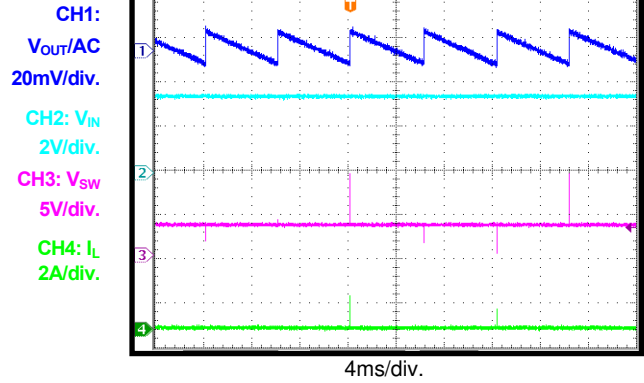
Steady State

$I_{OUT} = 0A$, USM



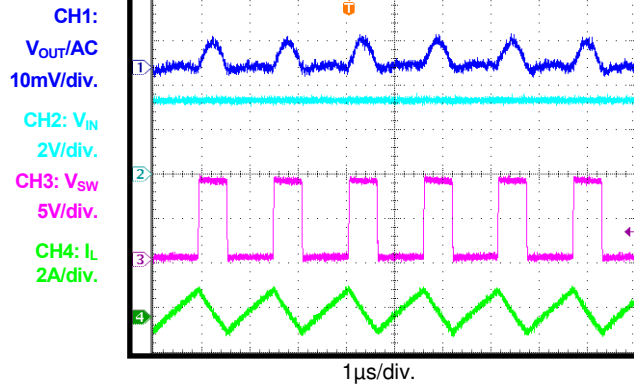
Steady State

$I_{OUT} = 0A$, PSM



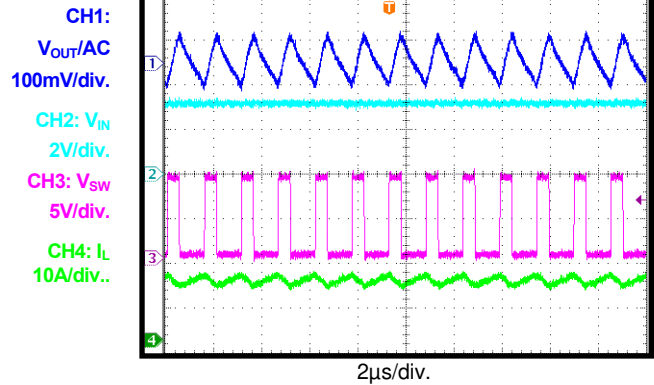
Steady State

$I_{OUT} = 0A$, FCCM



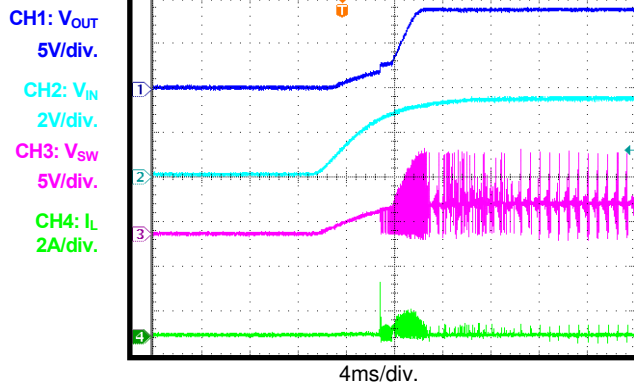
Steady State

$I_{OUT} = 3.5A$



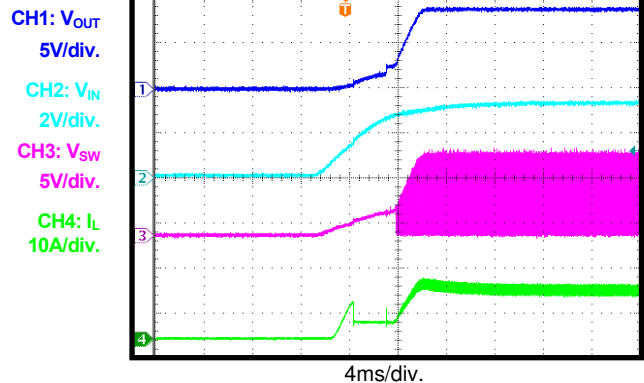
V_{IN} Start-Up

$I_{OUT} = 0A$



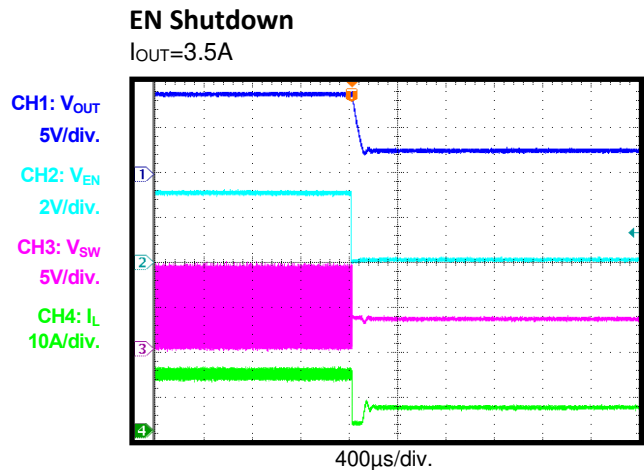
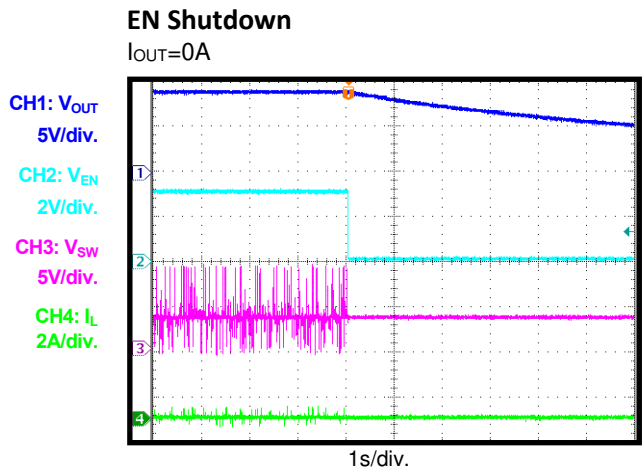
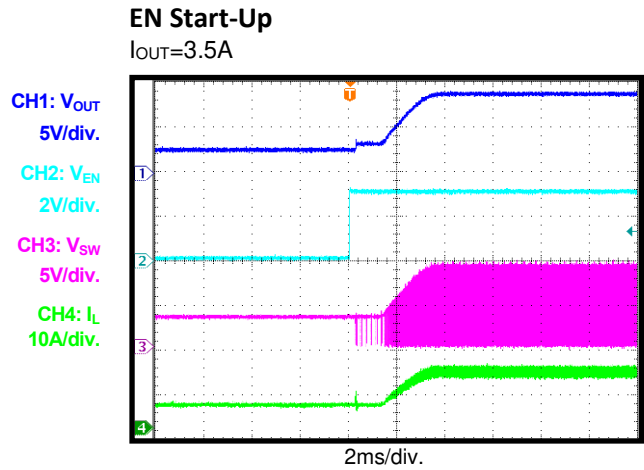
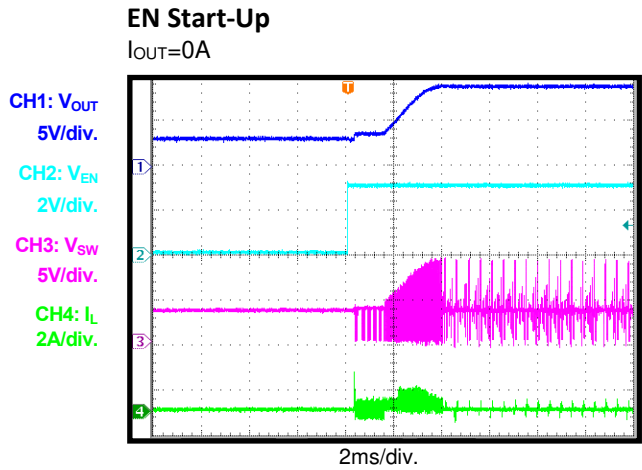
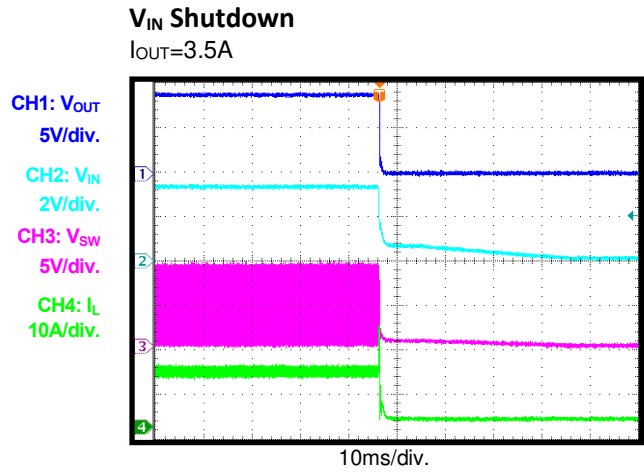
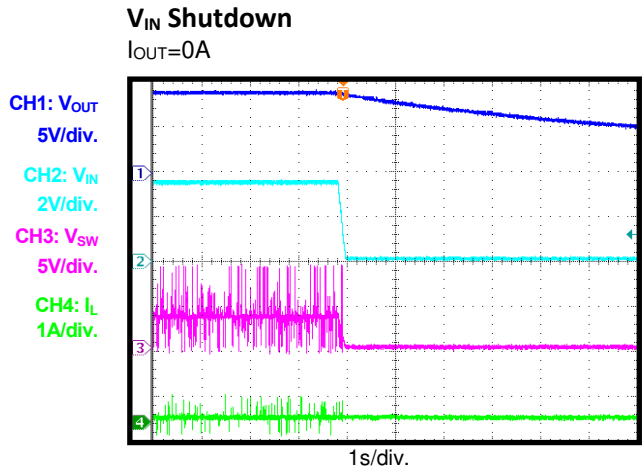
V_{IN} Start-Up

$I_{OUT} = 3.5A$



EVB TEST RESULTS (continued)

$V_{IN} = 3.3V$, $V_{OUT} = 9V$, $L = 1.5\mu H$, $I_{OUT} = 3.5A$, PSM, $T_A = 25^\circ C$, unless otherwise noted.



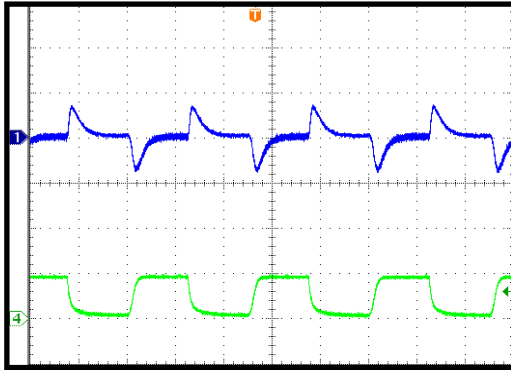
EVB TEST RESULTS (continued)

$V_{IN} = 3.3V$, $V_{OUT} = 9V$, $L = 1.5\mu H$, $I_{OUT} = 3.5A$, PSM, $T_A = 25^\circ C$, unless otherwise noted.

Load Transient

$I_{OUT} = 0A \rightarrow 1.75A$, $I_{RAMP} = 25mA/\mu s$, USM

CH1: V_{OUT}/AC
500mV/div.
CH4: I_{OUT}
2A/div.

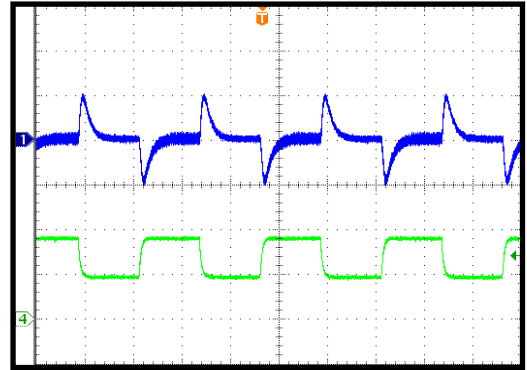


400 μs /div.

Load Transient

$I_{OUT} = 3.5A \rightarrow 1.75A$, $I_{RAMP} = 25mA/\mu s$

CH1: V_{OUT}/AC
500mV/div.
CH4: I_{OUT}
2A/div.

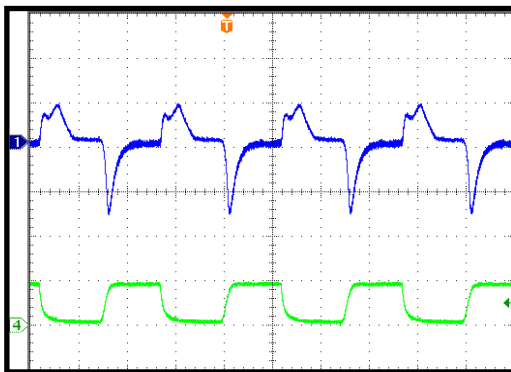


400 μs /div.

Load Transient

$I_{OUT} = 0A \rightarrow 1.75A$, $I_{RAMP} = 25mA/\mu s$, PSM

CH1: V_{OUT}/AC
500mV/div.
CH4: I_{LOAD}
2A/div.

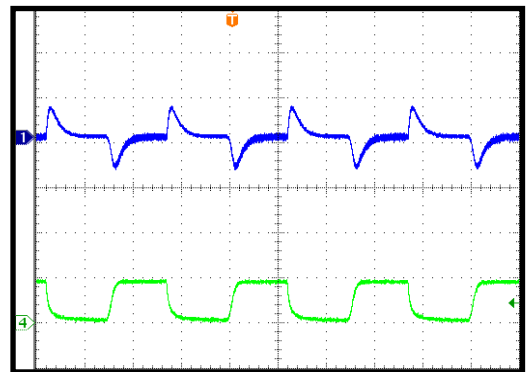


400 μs /div.

Load Transient

$I_{OUT} = 0A \rightarrow 1.75A$, $I_{RAMP} = 25mA/\mu s$, FCCM

CH1: V_{OUT}/AC
500mV/div.
CH4: I_{LOAD}
2A/div.

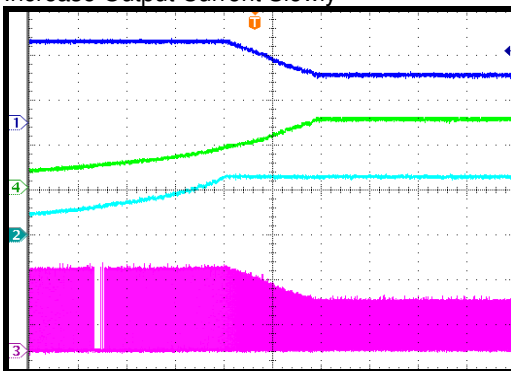


400 μs /div.

Over Current Entry

Increase Output Current Slowly

CH1: V_{OUT}
5V/div.
CH4: I_{OUT}
5A/div.
CH2: I_{IN}
10A/div.
CH3: V_{SW}
5V/div.

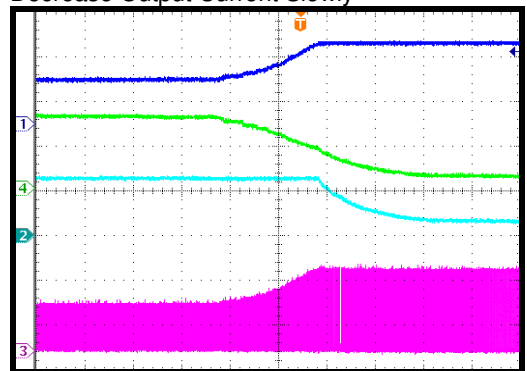


200ms/div.

Over Current Recovery

Decrease Output Current Slowly

CH1: V_{OUT}
5V/div.
CH4: I_{OUT}
5A/div.
CH2: I_{IN}
10A/div.
CH3: V_{SW}
5V/div.



200ms/div.

PRINTED CIRCUIT BOARD LAYOUT

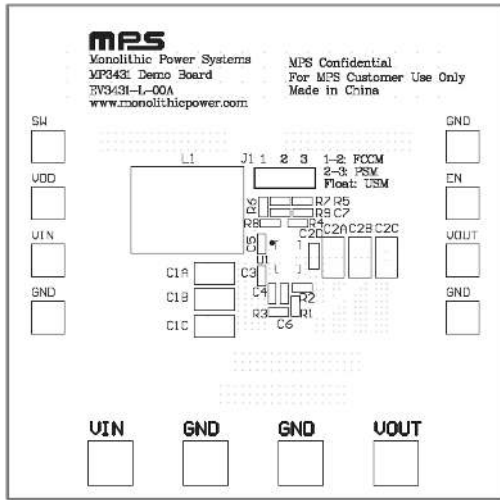


Figure 1—Top Silk Layer

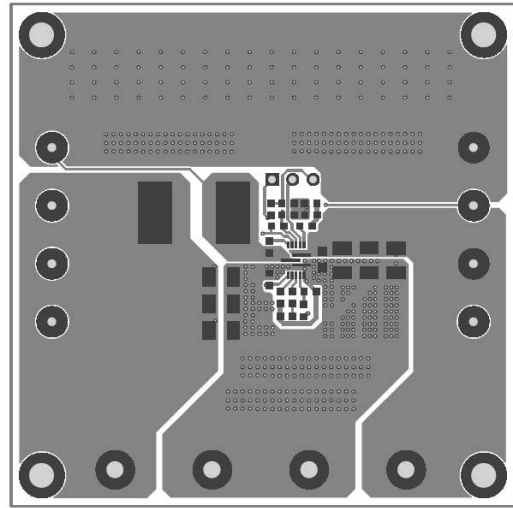


Figure 2—Top Layer

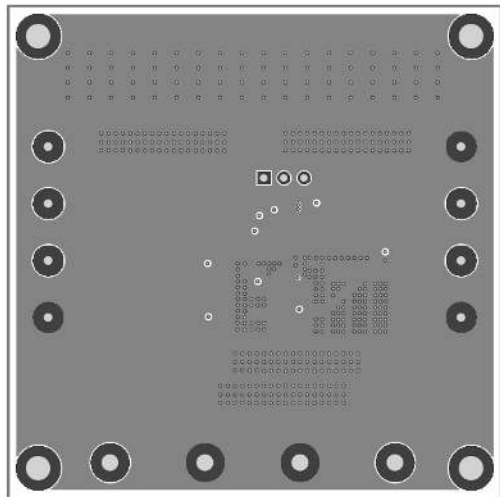


Figure 3—Inner Layer 1

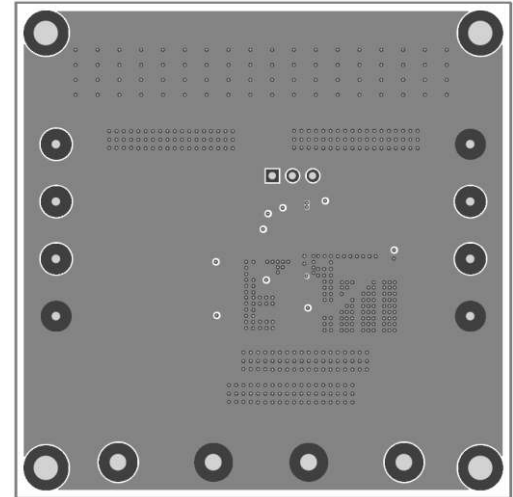


Figure 4—Inner Layer 2

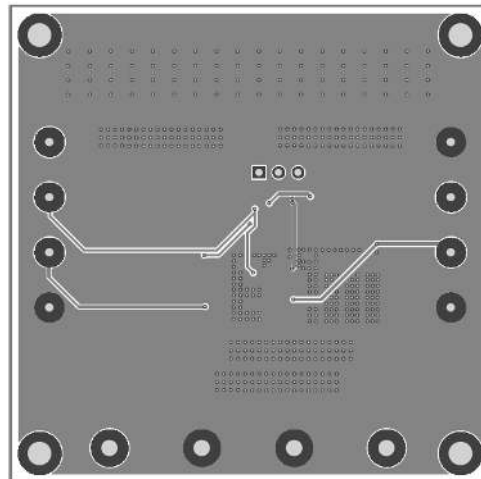


Figure 5—Bottom Layer

QUICK START GUIDE

The output voltage of this board is set to 9V. The board layout accommodates most commonly used components. Following are steps to quick start EV3431-L-00A.

1. Preset Power Supply to $3V \leq V_{IN} \leq 8.4V$.
2. Turn Power Supply off.
3. Connect Power Supply terminals to:
 - a. Positive (+): VIN
 - b. Negative (-): GND
4. Connect Load to:
 - a. Positive (+): VOUT
 - b. Negative (-): GND
5. Turn Power Supply on after making connections.
6. The MP3431 is enabled on the evaluation board once VIN is applied.
7. The output voltage VOUT can be changed by varying R2. Calculate the new value using the formula:

$$V_{OUT} = V_{FB} \times \left(1 + \frac{R1}{R2}\right)$$

Where $V_{FB} = 1V$ and $R1 = 750k\Omega$.

8. If USM and FCCM is needed, following below steps:
 - a. Turn Power Supply off.
 - b. Change J1 connection. Connect 1 to 2 for FCCM, connect 2 to 3 for PSM, and float 2 for USM.
 - c. Turn the power on. IC will work with the mode which is set by step b.

NOTICE: The information in this document is subject to change without notice. Please contact MPS for current specifications. Users should warrant and guarantee that third party Intellectual Property rights are not infringed upon when integrating MPS products into any application. MPS will not assume any legal responsibility for any said applications.