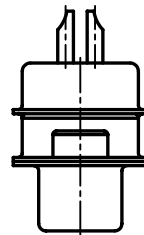
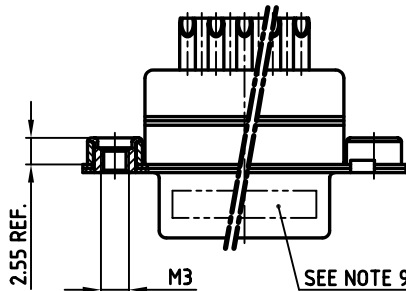
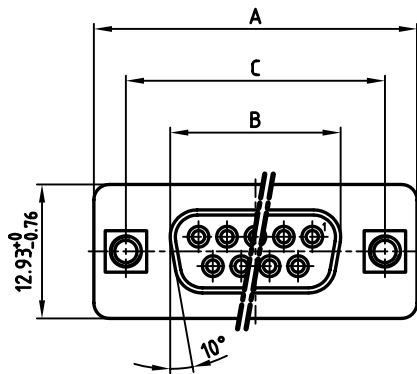
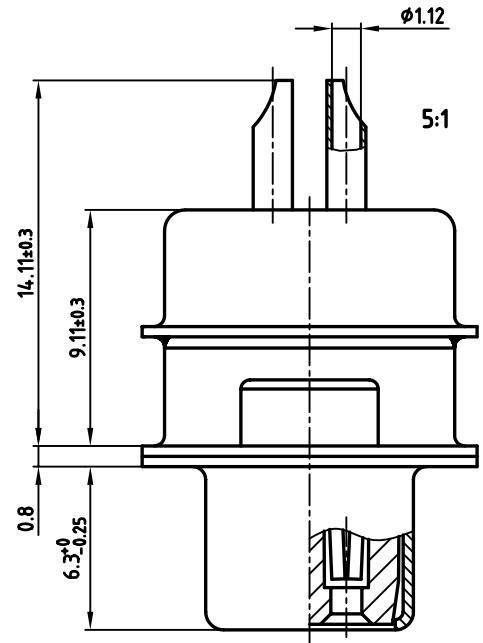


used for: D-SUB π FILTER

| No. of pos. | A ^{-0.76} | B ^{-0.25} | C | Part No. |
|-------------|--------------------|--------------------|---|-------------------|
| 9 | 31.19 | 16.46 | 25.00 ^{+0.12} _{-0.13} | 242A29300X |
| 15 | 39.52 | 24.79 | 33.30 ^{+0.15} _{-0.1} | 242A29310X |
| 25 | 53.42 | 38.50 | 47.04 ± 0.13 | 242A29320X |
| 37 | 69.70 | 54.96 | 63.50 ± 0.13 | 242A29330X |



NOTES:

1. METALSHELLS: STEEL; min. 315µin TIN over 40-80µin NICKEL
2. INSULATORS: HIGH TEMPERATURE PLASTIC UL 94 V-0, BLACK
3. CONTACTS: COPPER ALLOY
PLATING: 8µin HARD GOLD OVER min. 50µin NICKEL
SOLDER CUP ACCEPTS CABLE AWG 20
4. THREADED INSERT: COPPER ALLOY; min. 200µin TIN over 80µin NICKEL
5. COLLAR: COPPER ALLOY; min. 200µin TIN over 80µin NICKEL
6. CAPACITANCE: 2 x 180pF $\pm 20\%$
7. DIELECTRIC WITHSTANDING VOLTAGE: 424 VDC
8. MAXIMUM TORQUE VALUE FOR THREAD: 6 in.LB
9. CONNECTOR IS PART MARKED: PART-NO. CONEC ABC

Directive 2002/95/EC
 „RoHS“
 Compliant

| | |
|---|--------|
| APPROVAL # FREIGABE # DEBLOCAGE # AUTORIZACION # APPROVAL | |
| CUSTOMER APPROVAL DATE: | |
| NAME: | TITLE: |
| COMPANY NAME: | |
| APPROVAL # FREIGABE # DEBLOCAGE # AUTORIZACION # APPROVAL | |

THIS DRAWING MAY NOT BE COPIED OR REPRODUCED IN ANY WAY, AND MAY NOT BE PASSED ON TO A THIRD PARTY, WITHOUT WRITTEN PERMISSION. OWNERSHIP AND COPYRIGHT OF CONEC GmbH DO NOT ALTER CAD DRAWING BY HAND

| | | | |
|------|----------------|--------------|--|
| | tolerance | | scale: 2:1 (5:1) |
| | | dim. in mm | material: SEE NOTES |
| | 2006 date | name | D-SUB π FILTER FEMALE 9-37pos. SOLDER CUP with threaded insert |
| | drawn 31.07. | Lehmenkühler | |
| | appd. 31.07. | Kühle | |
| | norm DIN 41652 | | |
| | d-old | | dwg no: AutoCAD 2006 |
| | a Origin | CONEC | DIN-A |
| rev. | description | date | name |
| | | | 24K1A920 |
| | | | sh: 1/1 |
| | | | part no: SEE TABLE |