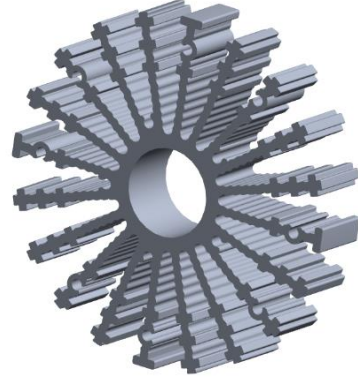


## Data Sheet : LS-80 HEAT SINK 50 MM

### Features

Round LED Modules Heat Sink  
 Modular design with mounting holes foreseen for direct mounting of  
 a wide range of LED modules and COB's



Material	: 6063 Alum. T5
Type	: Extruded
Width	: 80 mm
Height	: 80 mm
Length (L)	: <b>50 mm</b> 100 mm 150 mm 200 mm
Weight	: 4.436 kg/ mt
Surface	: Raw / Black anodized

### Technical Drawing

