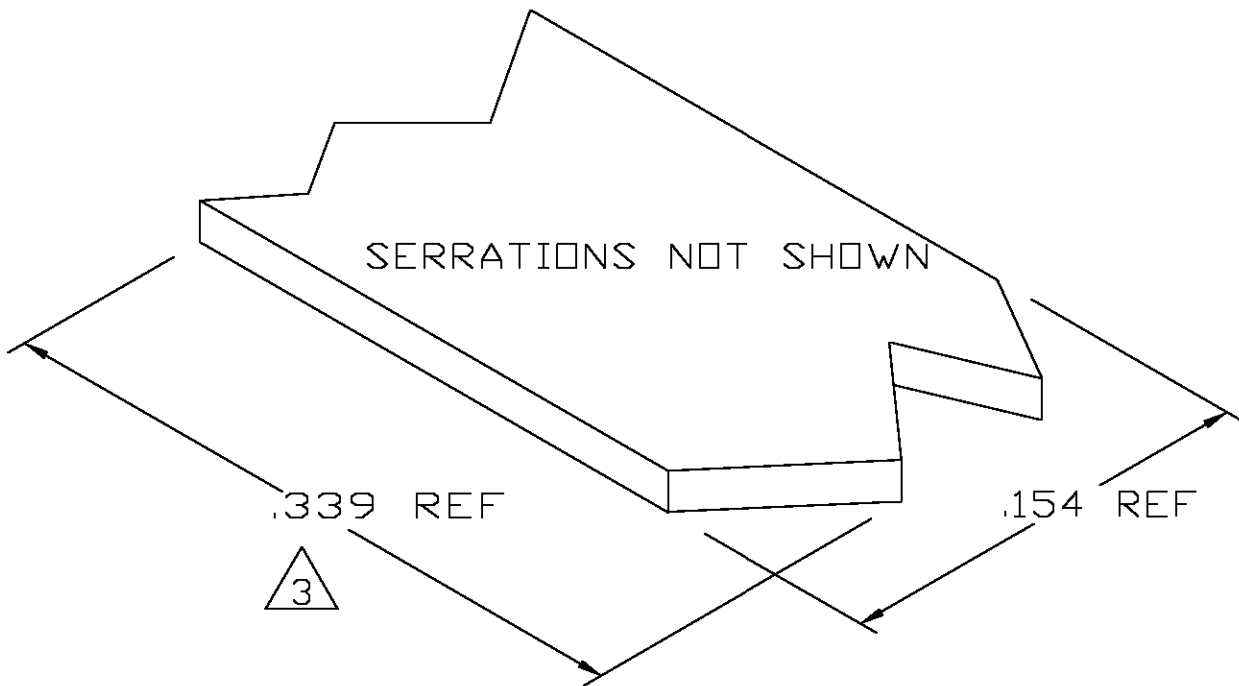
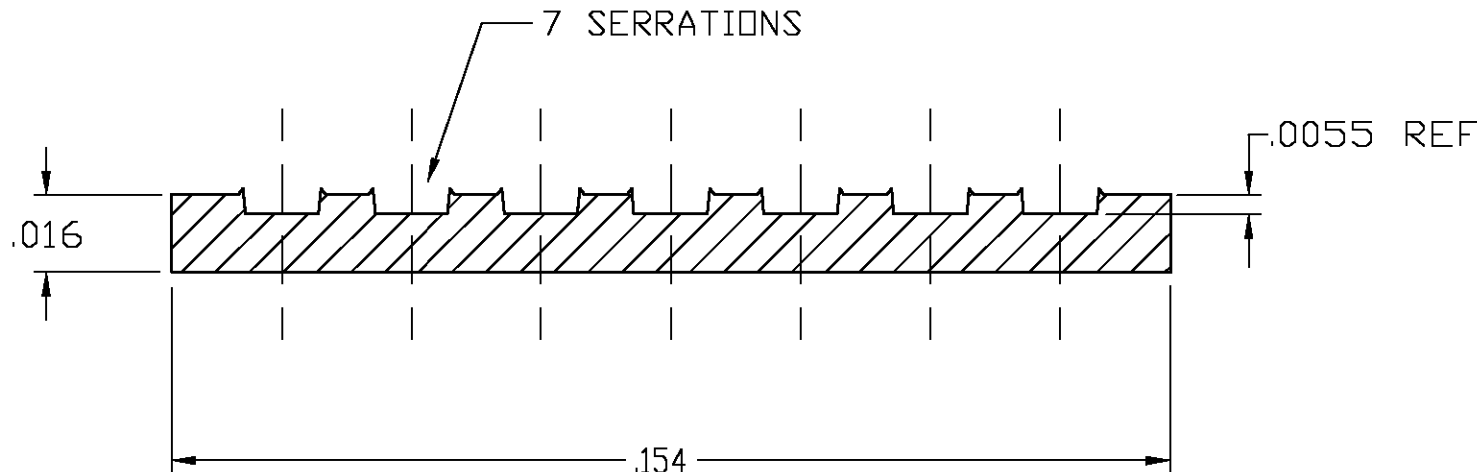


THIS DRAWING IS UNPUBLISHED. RELEASED FOR PUBLICATION  
 © COPYRIGHT - BY TYCO ELECTRONICS CORPORATION. ALL RIGHTS RESERVED.

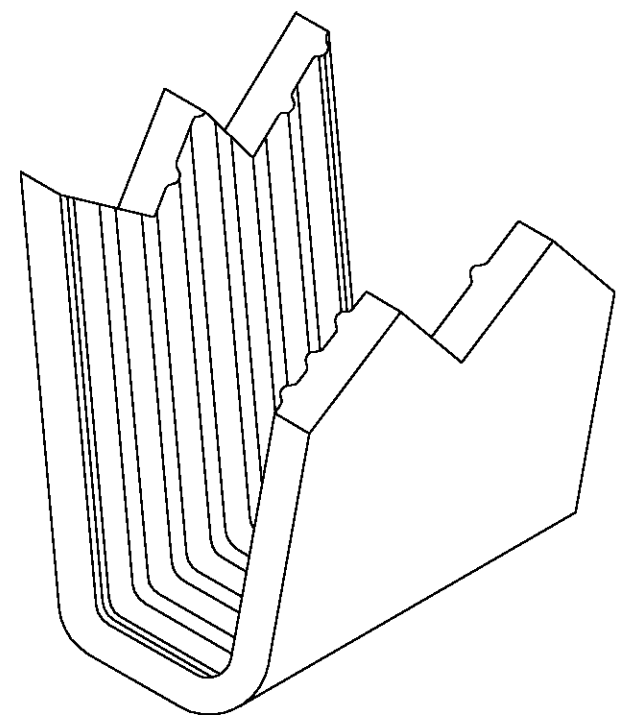
| LOC | DIST | REVISIONS   |                           |         |       |
|-----|------|-------------|---------------------------|---------|-------|
| P   | LTR  | DESCRIPTION | DATE                      | DWN     | APVD  |
| AF  | 50   | 0           | TRANSFERED TO TYCO FORMAT | 31MAR03 | MF EH |



- 1 CRIMPBAND MATERIAL PROVIDED IN CONTINUOUS STRIP.
  - 2 REFERENCE DESCRIPTIVE PART NUMBER L0766R16B.
- 3 BLANK LENGTH DETERMINED BY 076 TOOLSET.



TYP. CROSS SECTION



PARTIAL FORMED VIEW (REF)  
FORMED BY APPLICATION TOOLING

1601644-1  
PART NUMBER

|   |        |  |   |                    |     |       |     |       |        |       |     |        |     |                       |  |
|---|--------|--|---|--------------------|-----|-------|-----|-------|--------|-------|-----|--------|-----|-----------------------|--|
| THIS DRAWING IS A CONTROLLED DOCUMENT.  |        | DWN<br>MICHAEL S. FEHER<br>31 MAR 2003 | Tyco Electronics Corporation<br>Harrisburg, PA 17105-3608 |                    |     |       |     |       |        |       |     |        |     |                       |  |
| DIMENSIONS:<br>INCHES   |        | CHK<br>EDWARD HOWARD<br>31 MAR 2003    | NAME<br>-<br>CRIMPBAND, MTM                               |                    |     |       |     |       |        |       |     |        |     |                       |  |
| TOLERANCES UNLESS OTHERWISE SPECIFIED:  |        | APVD<br>EDWARD HOWARD<br>31 MAR 2003   | PRODUCT SPEC<br>-   |                    |     |       |     |       |        |       |     |        |     |                       |  |
| <table border="0"> <tr><td>0 PLC</td><td>± -</td></tr> <tr><td>1 PLC</td><td>± -</td></tr> <tr><td>2 PLC</td><td>± -</td></tr> <tr><td>3 PLC</td><td>± .005</td></tr> <tr><td>4 PLC</td><td>± -</td></tr> <tr><td>ANGLES</td><td>± -</td></tr> </table> |        | 0 PLC                                  | ± -   | 1 PLC              | ± - | 2 PLC | ± - | 3 PLC | ± .005 | 4 PLC | ± - | ANGLES | ± - | APPLICATION SPEC<br>- |  |
| 0 PLC   | ± -    |  |   |                    |     |       |     |       |        |       |     |        |     |                       |  |
| 1 PLC   | ± -    |  |   |                    |     |       |     |       |        |       |     |        |     |                       |  |
| 2 PLC   | ± -    |  |   |                    |     |       |     |       |        |       |     |        |     |                       |  |
| 3 PLC   | ± .005 |  |   |                    |     |       |     |       |        |       |     |        |     |                       |  |
| 4 PLC   | ± -    |  |   |                    |     |       |     |       |        |       |     |        |     |                       |  |
| ANGLES  | ± -    |  |   |                    |     |       |     |       |        |       |     |        |     |                       |  |
| MATERIAL<br>UNS C26000 BRASS  |        | FINISH<br>NONE                         | WEIGHT<br>-   | RESTRICTED TO<br>- |     |       |     |       |        |       |     |        |     |                       |  |
| -   |        | SIZE<br>A3                             |   | CAGE CODE<br>00779 |     |       |     |       |        |       |     |        |     |                       |  |
| -   |        | DRAWING NO<br>C-1601644                |   | SCALE<br>1:1       |     |       |     |       |        |       |     |        |     |                       |  |
| -   |        | CUSTOMER DRAWING                       |   | SHEET 1 OF 1       |     |       |     |       |        |       |     |        |     |                       |  |
| -   |        | -                                      |   | REV 0              |     |       |     |       |        |       |     |        |     |                       |  |