

SDT Series Micro Mini Pendulum Surface Mount Detect Switches



Features/Benefits

- Low profile package sits just 3,30 mm off PCB
- Design allows top or side actuation
- Low actuation force, 30 grams max.
- Pick and place compatible, available in tape & reel packaging
- RoHS compliant and compatible

Typical Applications

- Consumer electronics
- Computers
- Medical devices
- ATCA or MicroTCA devices



Advanced TCA®

μTCA®

Specifications

CONTACT RATING: 1 mA 5 VDC
 MECHANICAL AND ELECTRICAL LIFE: 100,000 cycles min.
 CONTACT RESISTANCE: 1 Ω max. initial.
 INSULATION RESISTANCE: 10 M Ω min. between adjacent contacts.
 OPERATING TEMPERATURE: -20°C to +70°C
 STORAGE TEMPERATURE: -30°C to +80°C
 PACKAGING: Tape & reel, 2,200 per reel.

Materials

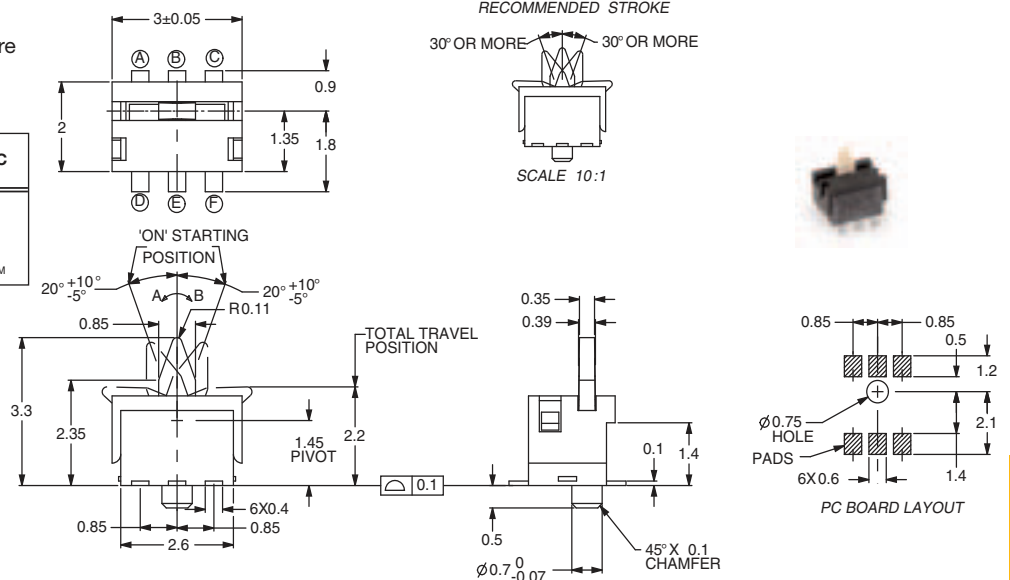
BASE: LCP
 COVER: PA 46
 ACTUATOR: LCP
 MOVABLE BLADE: Silver over nickel plate.
 TERMINALS: Silver over nickel plate.

NOTE: Specifications and materials listed above are for switches with standard options. For information on specific and custom switches, consult Customer Service Center.

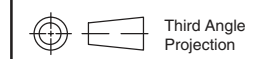
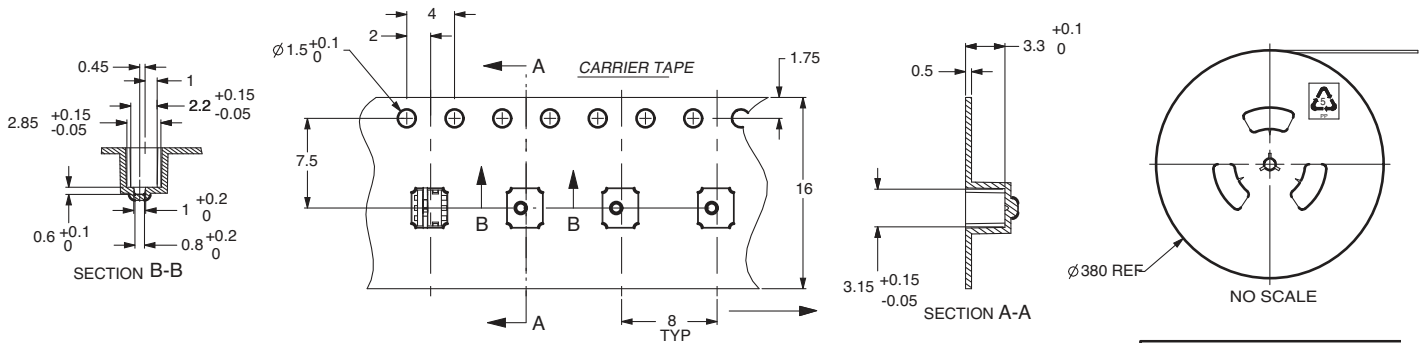
Build-A-Switch

Complete part numbers for SDT Series are shown below.

PART NUMBER	TERMINALS	SCHEMATIC
SDT004	Silver	 CIRCUIT DIAGRAM



TAPE & REEL



Third Angle Projection
 Dimensions are shown: mm
 Specifications and dimensions subject to change

