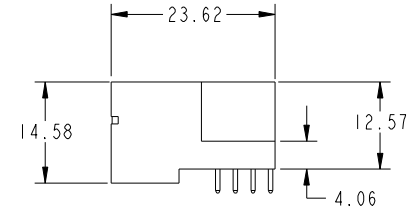
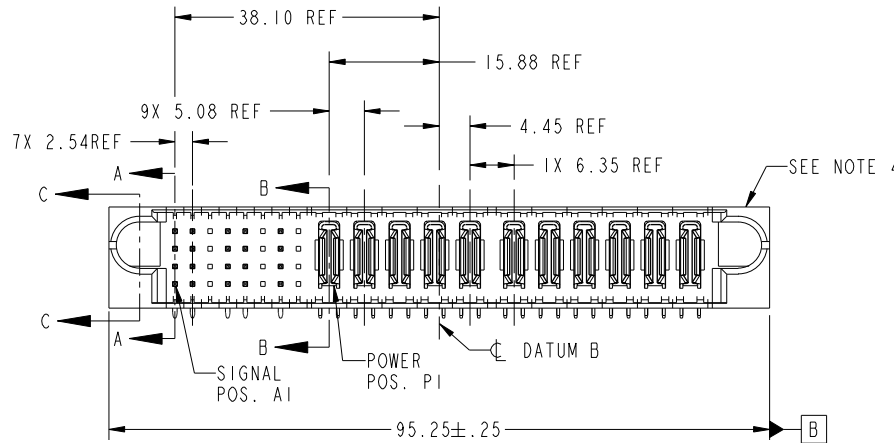


Tous droits strictement reserves. Reproduction ou communication a des tiers interdite sous quelque forme que ce soit sans autorisation écrite du propriétaire. Propriete de c FCI. Droits de reproduction FCI.



All rights strictly reserved. Reproduction or issue to third parties in any form whatever is not permitted without written authority from the proprietor. Property of FCI. Copyright FCI.

PRODUCT NO.	ROWS	SIGNAL							POWER											E2					
		E1	1	2	3	4	5	6	7	8	P1	P2	P3	P4	P5	P6	P7	P8	P9		P10	P11			
51939-259 NOTE: ③	D C B A		H	H	H	H	X	H	X	PA	PA	PA	PA	PA	PA	PA	PA	PA	PA	PA	PA	PA	PA		
			G	X	G	G	X	T	X																
			E	X	E	E	X	E	X																



CODE	DIM "M" MATING LENGTH	CONTACT TYPE
H	[5.59]	SIGNAL
R	[6.86]	SIGNAL
T	[6.86]	SIGNAL
PA	[N/A]	POWER
G	[5.59]	SIGNAL
F	[5.59]	SIGNAL
E	[5.59]	SIGNAL
X	OMITTED	OMITTED

mat'l code				SEE NOTE 2		tolerances unless otherwise specified		CUSTOMER		FCI	
ltr	ecn no.	dr	date	linear	0.X ± 0.3	projection		COPY		www.fciconnect.com	
A	DG06-0447	JMG	10/20/06	angles	0.XX ± 0.13	MIM		title		32S + 11P	
				dr	0.XXX ± 0.051	scale		RIGHT ANGLE SOLDER HEADER		code	
				enr	0° ± 2°	1:1		product family		PwrBlade	
				chr	JM GUO 10/20/06			size		213	
				appd	RYAN YUAN 10/20/06			dwg no		1 of 4	
					BEER FU 10/20/06			51939-259			
					JOSEPH HSIA 10/20/06			A			
sheet index	revision sheet	A	A	A	A			cage code		22526	
1	2	3	4							4	

Pro/E

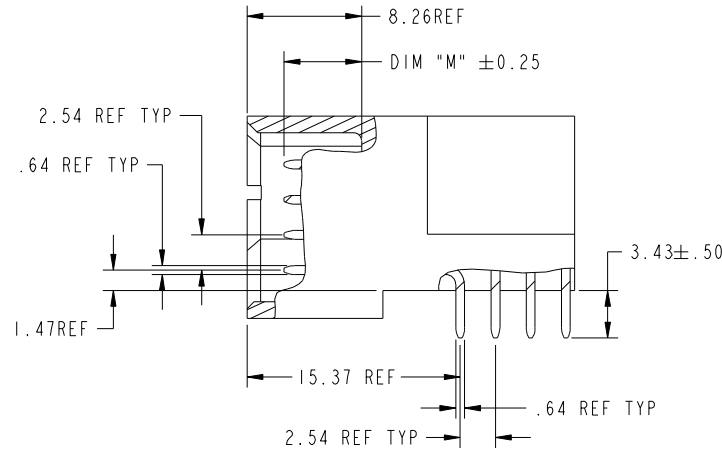
cage code 22526

Tous droits strictement réservés. Reproduction ou communication a des tiers interdite sous quelque forme que ce soit sans autorisation écrite du propriétaire. Propriété de c FCI. Droits de reproduction FCI.

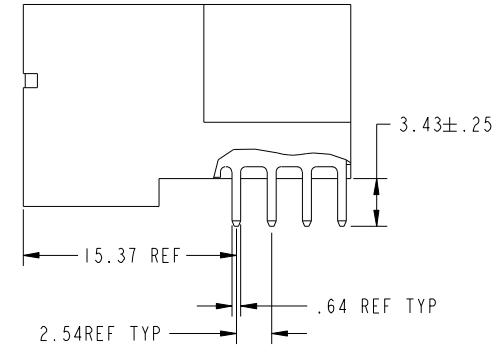
All rights strictly reserved. Reproduction or issue to third parties in any form whatever is not permitted without written authority from the proprietor. Property of FCI. Copyright FCI.



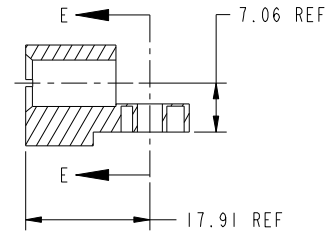
PRODUCT NUMBER
51939-259--
NOTE: ③



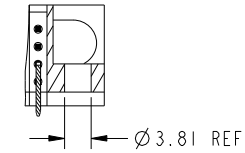
BROKEN-OUT SECTION A-A
SCALE 2:1



BROKEN-OUT SECTION B-B
SCALE 2:1



SECTION C-C



PARTIAL SECTION E-E

mat'l code				SEE NOTE 2		tolerances unless otherwise specified		CUSTOMER		FCI	
litr	ecr no.	dr	date	linear	0.X ±0.3	COPY		www.fciconnect.com		title	
A					0.XX ±0.13	projection		32S + 11P		RIGHT ANGLE SOLDER HEADER	
				angles	0.XXX ±0.051			product family		PwrBlade	
				dr	JM GUO 10/20/06	MIM		size		code	
				enr	RYAN YUAN 10/20/06			dwg no		213	
				chr	BEER FU 10/20/06	scale		51939-259		sheet	
				appd	JOSEPH HSIA 10/20/06	1:1		A		2 of 4	
sheet index		revision sheet									

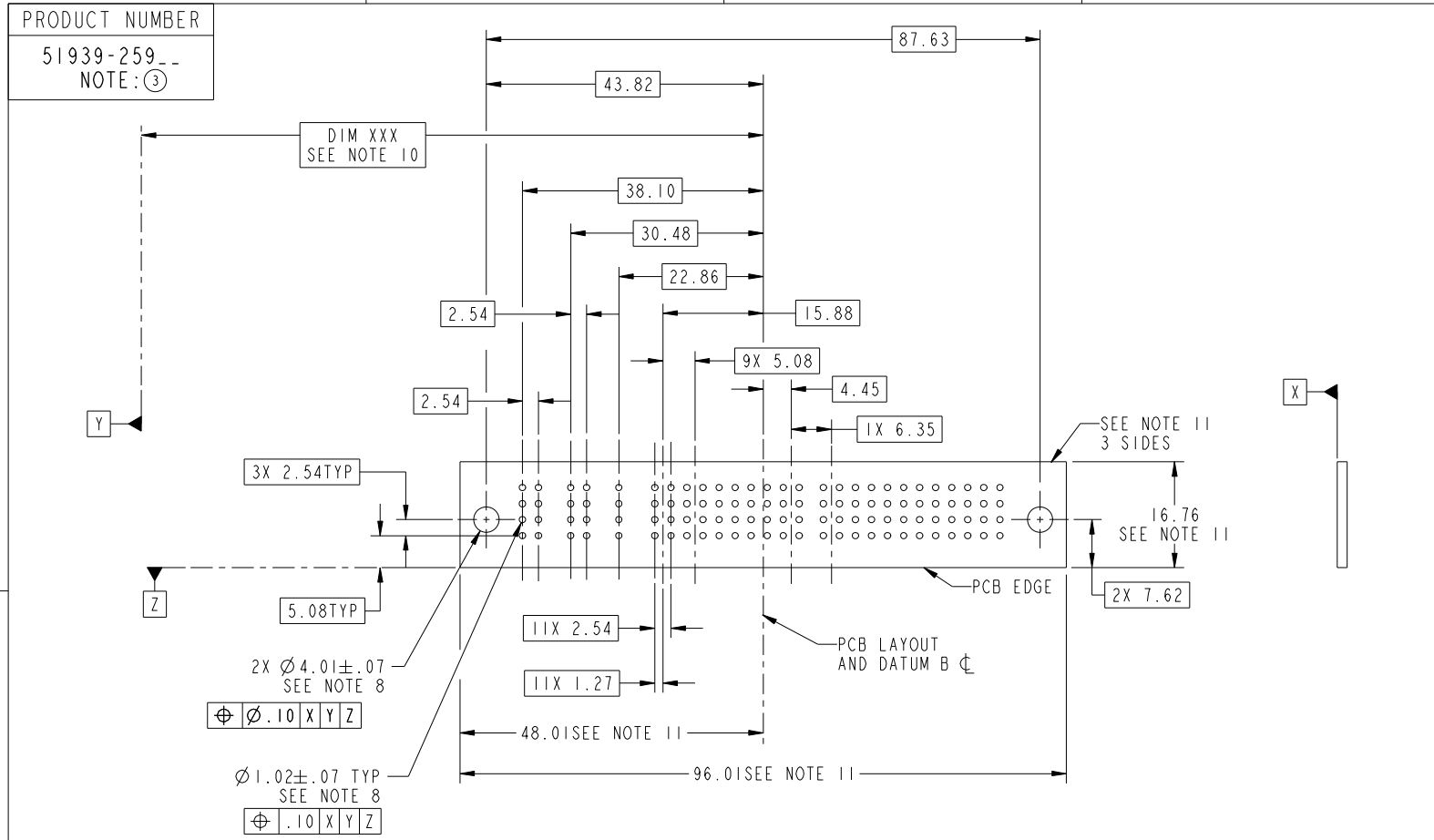
cage code 22526

Pro/E

Tous droits strictement reserves. Reproduction ou communication a des tiers interdite sous quelque forme que ce soit sans autorisation écrite du propriétaire. Propriete de c FCI. Droits de reproduction FCI.



All rights strictly reserved. Reproduction or issue to third parties in any form whatever is not permitted without written authority from the proprietor. Property of FCI. Copyright FCI.



RECOMMENDED PCB LAYOUT

mat'l code		SEE NOTE 2		tolerances unless otherwise specified		CUSTOMER		FCI		www.fciconnect.com	
ltr	ecn no.	dr	date	linear	0.X ± 0.3	COPY				title	
A					0.XX ± 0.13	projection				32S + 11P	
				angles	0.XXX ± 0.051					RIGHT ANGLE SOLDER HEADER	
				dr	0° ± 2°	scale		product family		code	
				enr	JM GUO 10/20/06	1:1		PwrBlade		213	
				chr	RYAN YUAN 10/20/06	A		size		dwg no	
				appd	BEER FU 10/20/06	A		51939-259		sheet	
					JOSEPH HSIA 10/20/06			3 of 4			
sheet index	revision sheet										

cage code 22526

Pro/E

Tous droits strictement reserves. Reproduction ou communication a des tiers interdite sous quelque forme que ce soit sans autorisation écrite du propriétaire. Propriete de c FCI. Droits de reproduction FCI.



All rights strictly reserved. Reproduction or issue to third parties in any form whatever is not permitted without written authority from the proprietor. Property of FCI. Copyright FCI.

PRODUCT NUMBER
51939-259_--
NOTE: ③

NOTES:

1. DIMENSIONS AND TOLERANCES ARE IN ACCORDANCE WITH ASME Y14.5M, 1994 UNLESS OTHERWISE SPECIFIED.

CONNECTOR NOTES:

2. HOUSING MATERIAL: UL 94 V-0 GLASS FILLED HIGH-TEMP THERMOPLASTIC
POWER CONTACT MATERIAL: COPPER ALLOY
SIGNAL PIN MATERIAL: COPPER ALLOY

③ 51939-259; 51939-259LF; 51939-259GLF PLATING SPEC. SEE PRINT: 10064183

4. MANUFACTURER'S NAME, P/N, AND DATE CODE TO APPEAR ON THIS SURFACE.

5. PRODUCT SPECIFICATION GS-12-149.
APPLICATION SPECIFICATION BUS-20-067.

6. PACKAGED IN TRAYS.

PCB NOTES:

7. ALL HOLE DIAMETERS ARE FINISHED HOLE SIZE.

8. MOUNTING HOLES, WHERE APPLICABLE, ARE UNPLATED.

9. $\varnothing 1.151 \pm 0.025$ DRILLED HOLES PLATED WITH 0.008 MIN SnPb OR Sn OVER 0.03 TO 0.08 Cu PLATING TO ACHIEVE $\varnothing 1.02 \pm 0.07$ HOLE.

10. "DIM XXX" TO BE DETERMINED BY THE CUSTOMER.

11. CONNECTOR KEEP-OUT ZONE.

mat'l code		SEE NOTE		tolerances unless otherwise specified		CUSTOMER		FCI		www.fciconnect.com		
ltr	ecr no.	dr	date	linear	0.X ± 0.3	COPY				title		
A					0.XX ± 0.13	projection				32S + 11P		
				angles	0.XXX ± 0.051					RIGHT ANGLE SOLDER HEADER		
				dr	0° ± 2°	MIM		product family		PwrBlade	code	
				enr	JM GUO 10/20/06			size		dwg no	213	
				chr	RYAN YUAN 10/20/06	scale		A		51939-259	sheet	
				appd	BEER FU 10/20/06	1:1				4 of 4		
					JOSEPH HSIA 10/20/06							
sheet index	revision sheet											

cage code 22526

Pro/E