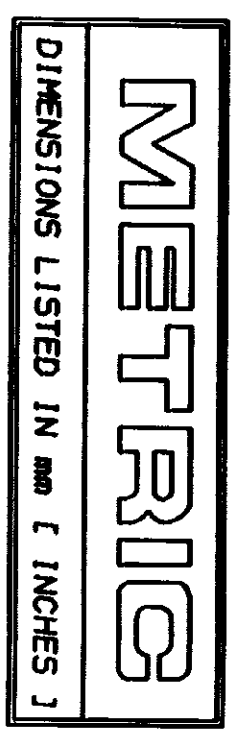
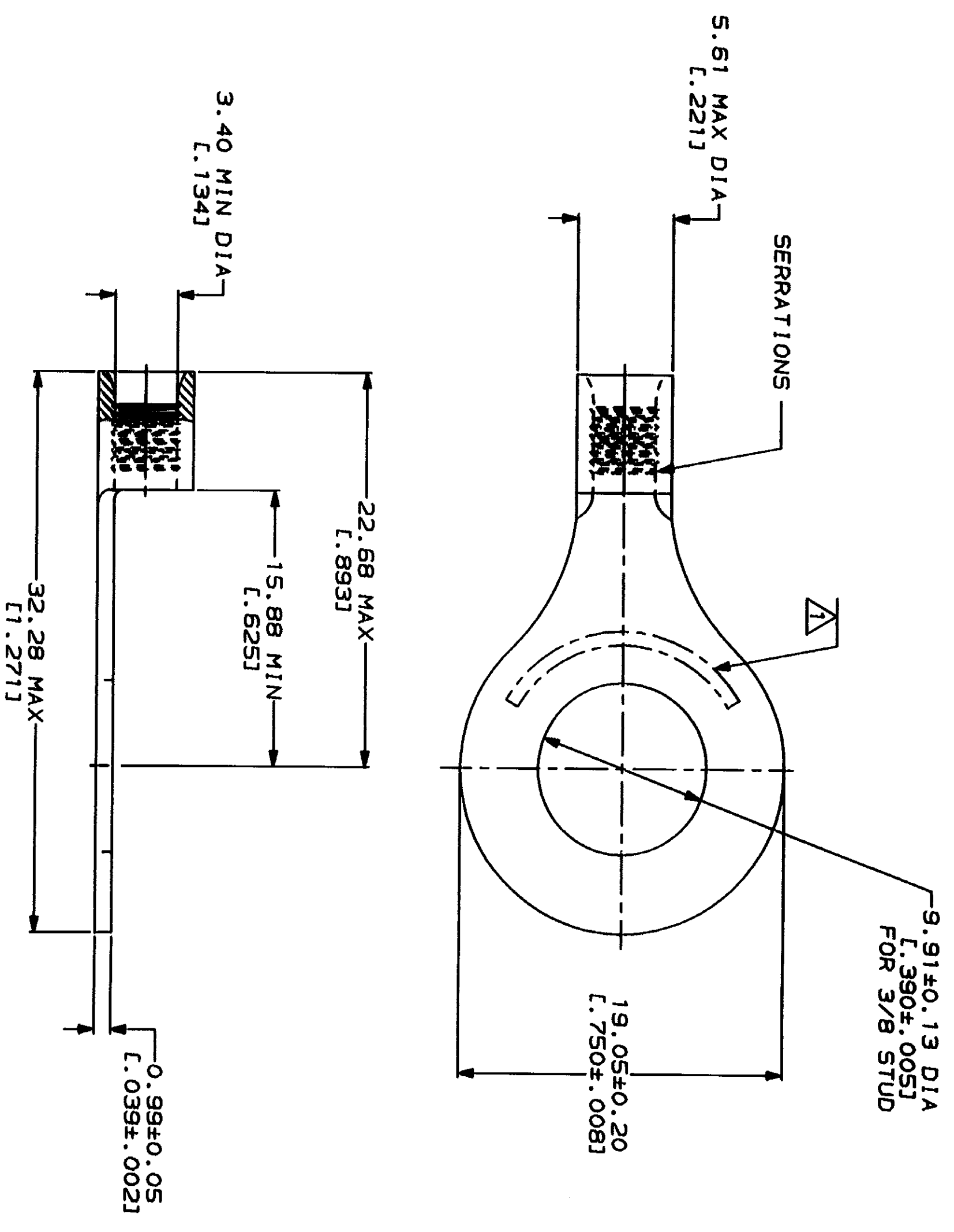


| LOC | DIST | ZONE | LTR | REVISIONS | DATE | APPD |
|-----|------|------|-----|--------------------------|---------|------|
| G | 14 | A | | REVISED PER 0720-0230-93 | 2/28/93 | AMP |



| | |
|-----------------------|---------------------------|
| AMP WIRE RANGE | IL E13288 Listed |
| 12-10 AWG STRAINED | 12-10 AWG STRAINED |
| LR2189 Certified | MILITARY P/N AND CLASS |
| NOT CERTIFIED | NOT APPLICABLE |

△ STAMP AMP 12-10* APPROX AS SHOWN



AMP INCORPORATED
 CUSTOMER SERVICE SYSTEMS

FOR ADDITIONAL
 PRODUCT INFORMATION OR
 COPIES OF DRAWINGS
 AND TECHNICAL DOCUMENTS
 FOR APPLICATION
 TOOLING INFORMATION
 FOR ORDER ENTRY

PRODUCT INFORMATION CENTER
 1-800-522-6752
 TOOLING ASSISTANCE CENTER
 1-800-722-1111
 1-800-526-5142

MAX RECOMMENDED OPERATING
 TEMPERATURE:
 170°C MAX

VOLTAGE RATING:
 NOT APPLICABLE

WIRE CROSS SECTIONAL AREA RANGE:
 2.62-6.64mm² [5,180-13,100] CIR MILS
 STRANDED

DO NOT SCALE PRINT.
 UNLESS SPECIFIED
 DIMENSIONS IN mm [INCHES]
 TOLERANCES ON:
 2 PLG DEC ± .05
 3 PLG DEC ± .02
 ANGLES
 MATERIAL
 COPPER PER
 ASTM B-152
 ANNEALED

FINISH
 TIN PLATE
 0.00254 [L.000100] MIN
 THK PER MIL-T-10727

| | |
|----------------------------|----------------------------|
| DR 2-9-93 TA BRINKMAN | DR 2-9-93 TA BRINKMAN |
| CHK 2-9-93 DA PATTERSON | CHK 2-9-93 DA PATTERSON |
| APPD 2-9-93 DE MILLER | APPD 2-9-93 DE MILLER |
| APPD 2-9-93 JL HECKLEY | APPD 2-9-93 JL HECKLEY |
| PRODUCT SPEC | PRODUCT SPEC |
| APPLICATION SPEC | APPLICATION SPEC |
| WEIGHT | WEIGHT |

AMP Incorporated
 Harrisburg, PA 17105-3608

NAME
 TERMINAL, RING TONGUE,
 BUDGET

SIZE CASE CODE DRAWING NO
 00779 C-34833

SCALE 4:1 SHEET 1 OF 1

CUSTOMER DRAWING