

SECTION C-C

SECTION D-D

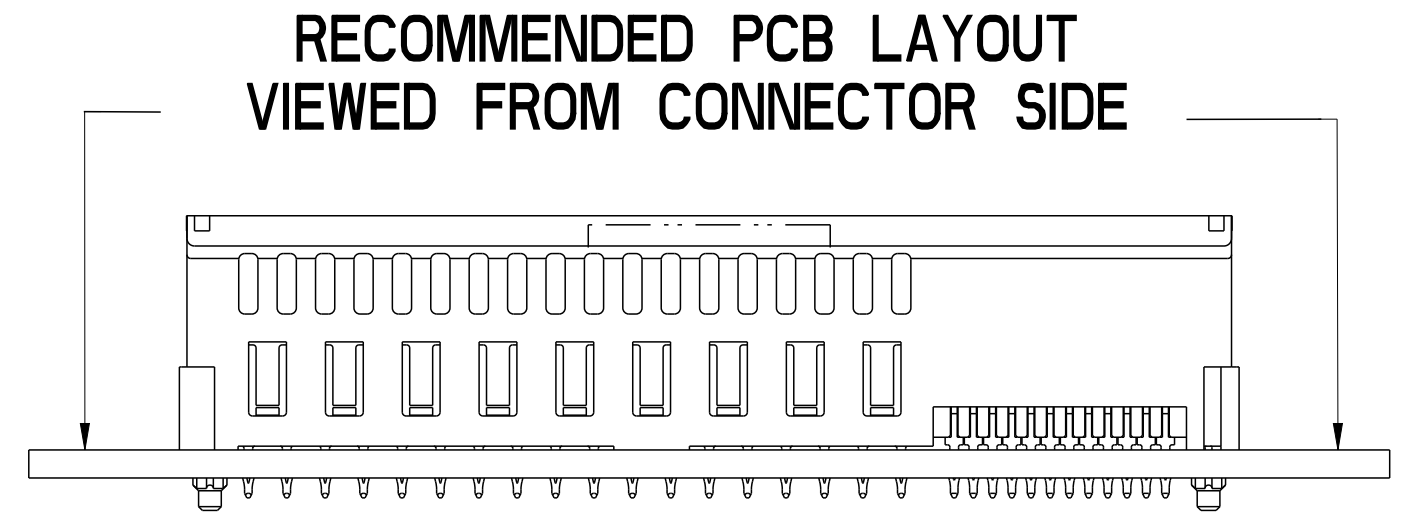
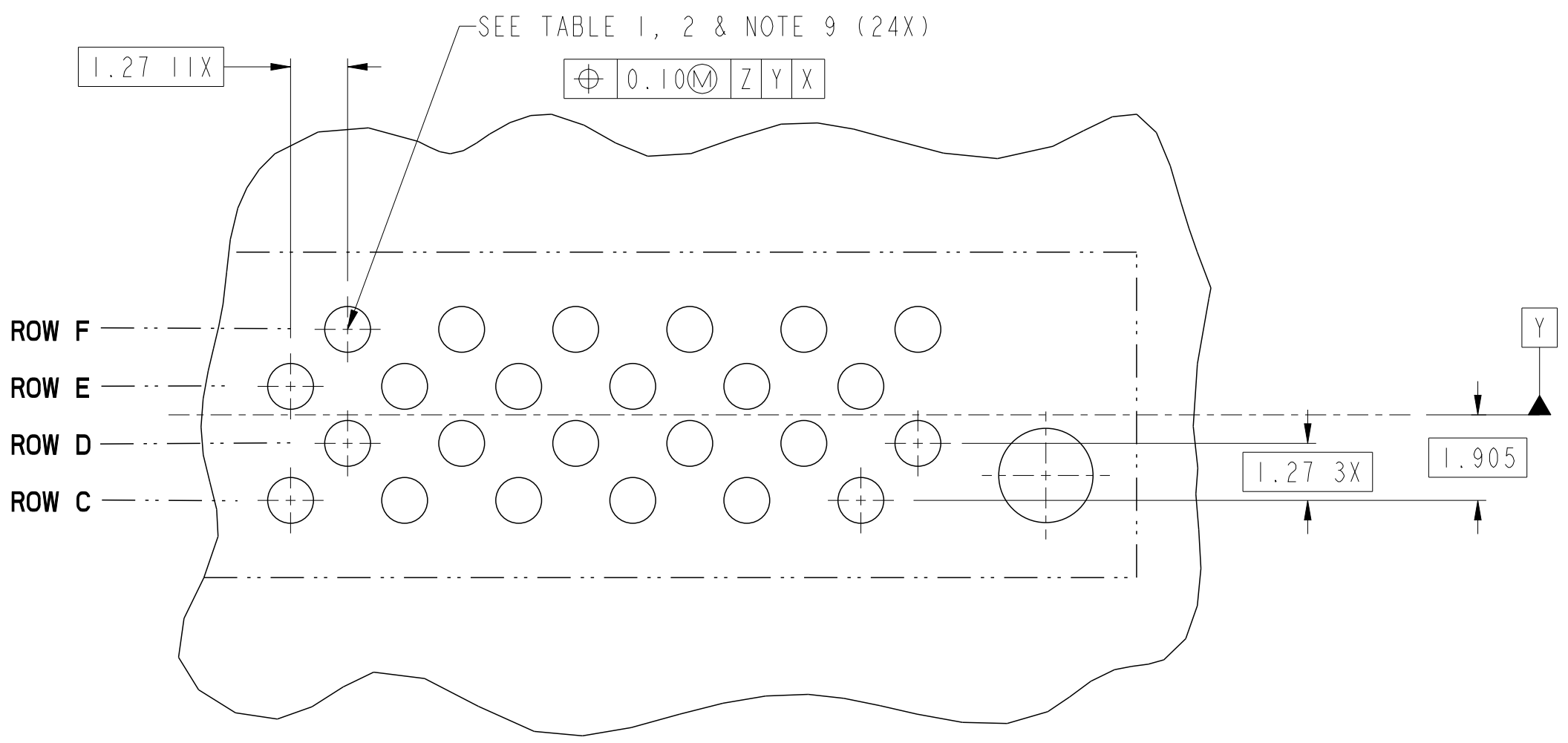
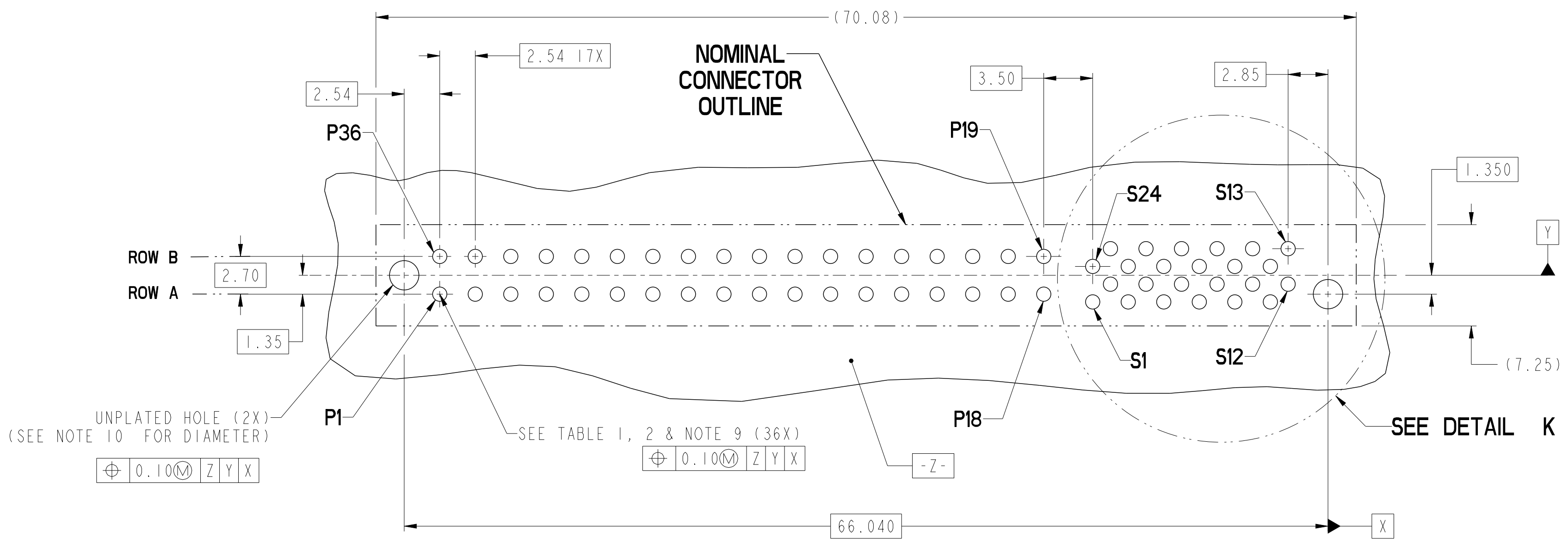
rev	ecn no	dr	date
A	-	HZ	2011-10-27
B	ELX-06-012747-1	HZ	2012-09-06
-	-	-	-
-	-	-	-
-	-	-	-
-	-	-	-

spec ref	tolerance std	linear	angular
-	ASME Y14.5	0.X ±0.3 0.XX ±0.1 0.XXX ±0.05	0° ±2°
surface	ASME Y14.5	✓	

dr	eng	chr	appr
Wei-Long Zhang	Wei-Long Zhang	-	Pei-Ming Zheng
2011/05/20	2012/09/17	-	2012/09/18

projection	size	scale	ecn no	rel level
MM	A2	4:1	ELX-DG-012747-1	Released
product family	card edge	cat. no.	10118251	rev B



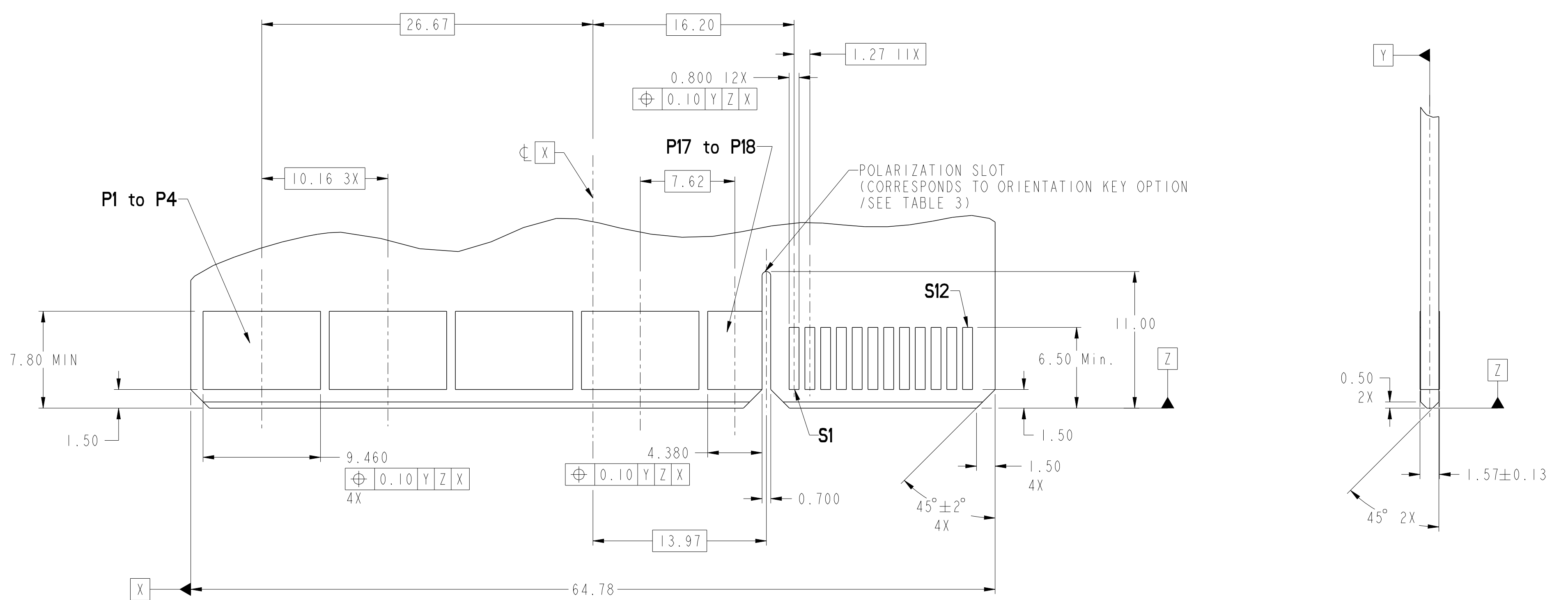


dr	Wei-Long Zhang	2011/05/20	projection	MM	size	A2	scale	4:1	
eng	Wei-Long Zhang	2012/09/17			ecn no	ELX-DG-012747-1			
chr	-	-			rel level	Released			
appr	Pai-Ming Zheng	2012/09/18	product family	CARD EDGE		rel level	Released		
		title	VERT RECT (36P 24S) HIGH POWER CARD EDGE			dwg no	10118251		
www.fci.com		cat. no.	-			Product - Customer Drw	sheet 2 of 4	rev	B

Copyright FCI.

CONTACT TYPE	TOP LAYER DESCRIPTION	TABLE 1 (HPCE / SOLDER TAILS) PLATED THROUGH-HOLE REQUIREMENTS				
		DRILLED HOLE DIAMETER	COPPER THICKNESS	TIN-LEAD THICKNESS	TIN THICKNESS	FINISHED HOLE DIAMETER
POWER & SIGNAL	TIN-LEAD	1.10-1.16 (1.15 DRILL)	0.025 - 0.050	0.005 - 0.015	--	0.94 - 1.10
	IMMERSION TIN	1.10-1.16 (1.15 DRILL)	0.025 - 0.050	--	0.9 - 1.5um	0.94 - 1.10
	COPPER (SEE NOTE 8)	1.10-1.16 (1.15 DRILL)	0.025 - 0.050	--	--	0.94 - 1.10

CONTACT TYPE	TOP LAYER DESCRIPTION	TABLE 2 (HPCE / PRESS-FIT TAILS) PLATED THROUGH-HOLE REQUIREMENTS				
		DRILLED HOLE DIAMETER	COPPER THICKNESS	TIN-LEAD THICKNESS	TIN THICKNESS	FINISHED HOLE DIAMETER
POWER & SIGNAL	TIN-LEAD	0.81-0.86 (0.85 DRILL)	0.025 - 0.050	0.005 - 0.015	--	0.65 - 0.80
	IMMERSION TIN	0.81-0.86 (0.85 DRILL)	0.025 - 0.050	--	0.9 - 1.5um	0.70 - 0.80
	COPPER (SEE NOTE 8)	0.81-0.86 (0.85 DRILL)	0.025 - 0.050	--	--	0.70 - 0.80

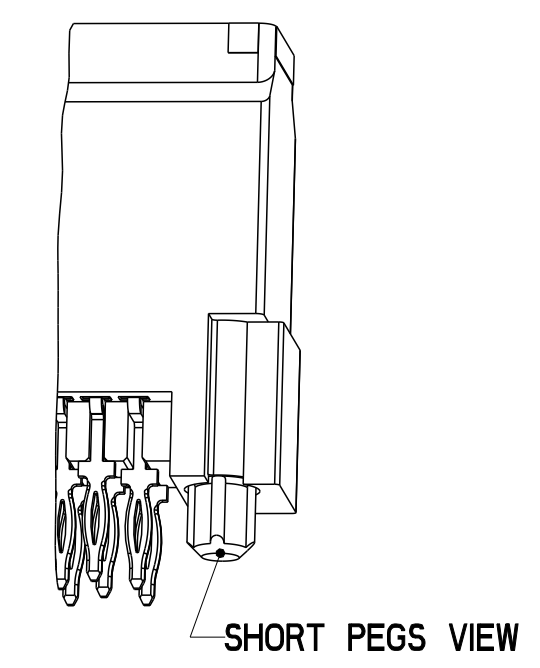
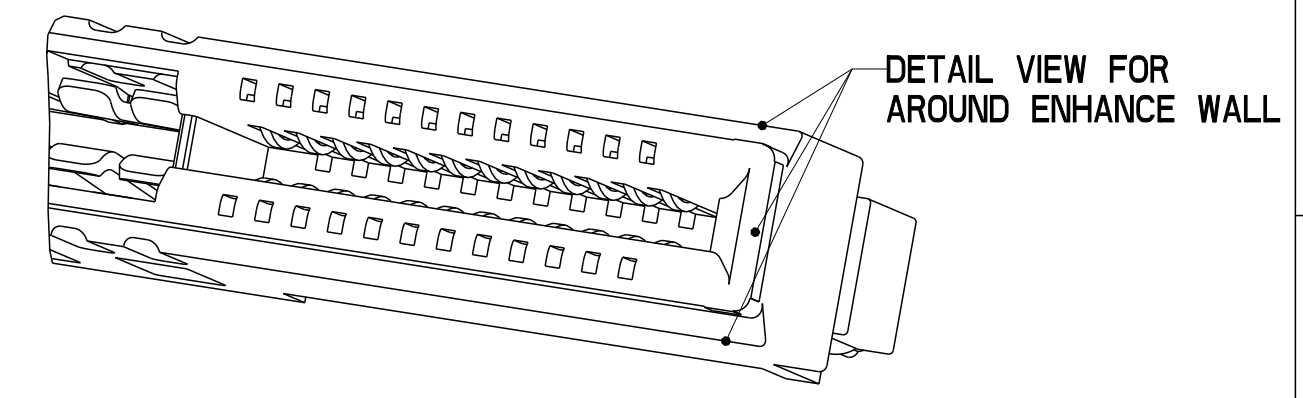


RECOMMENDED MATING BOARD  
FOOTPRINT

dr	Wei-Long Zhang	2011/05/20	projection	MM	size	A2	scale	4:1	
eng	Wei-Long Zhang	2012/09/17			ecn no	ELX-DG-012747-1	rel level	Released	
chr	-	-							
appr	Pei-Ming Zheng	2012/09/18	product family	CARD EDGE	rel level	Released			
			title	VERT RECT (36P 24S) HIGH POWER CARD EDGE		dwg no	10118251	rev	B
www.fci.com			cat. no.	-	Product - Customer Drw	sheet 3 of 4			

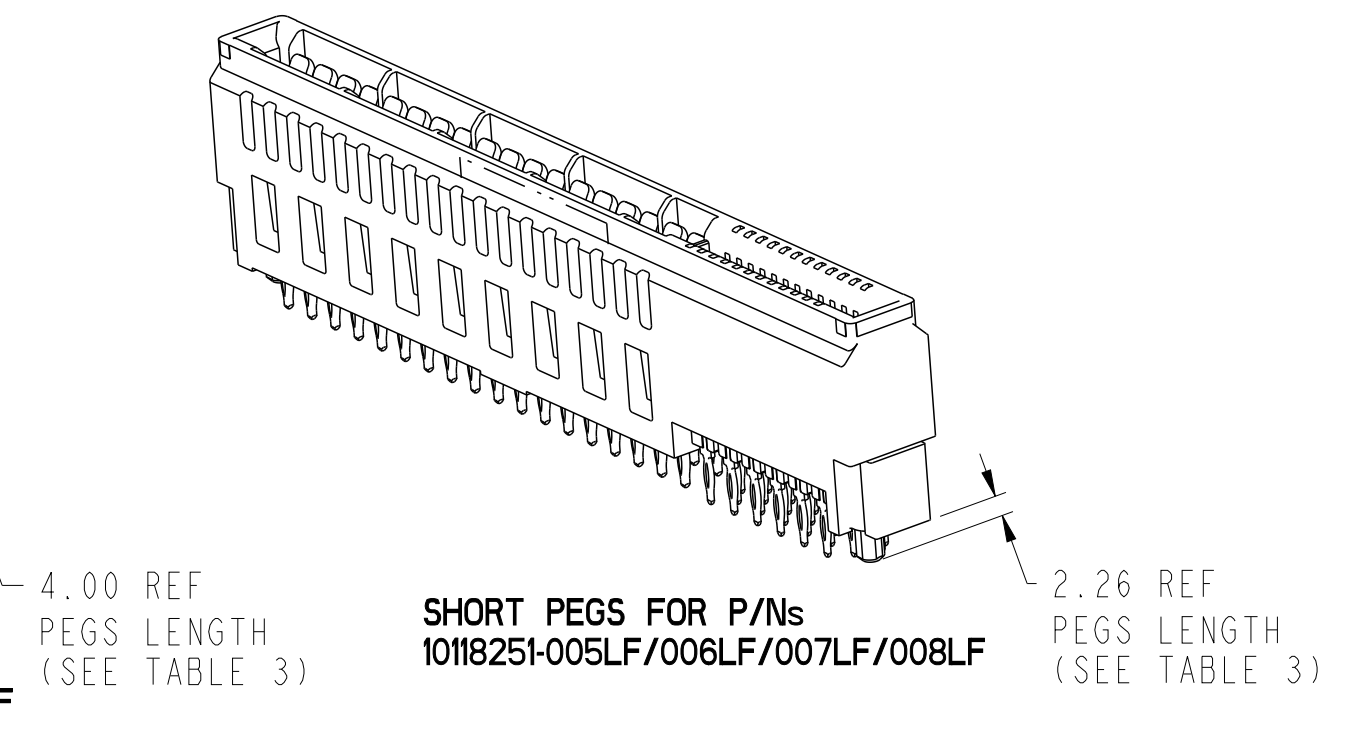
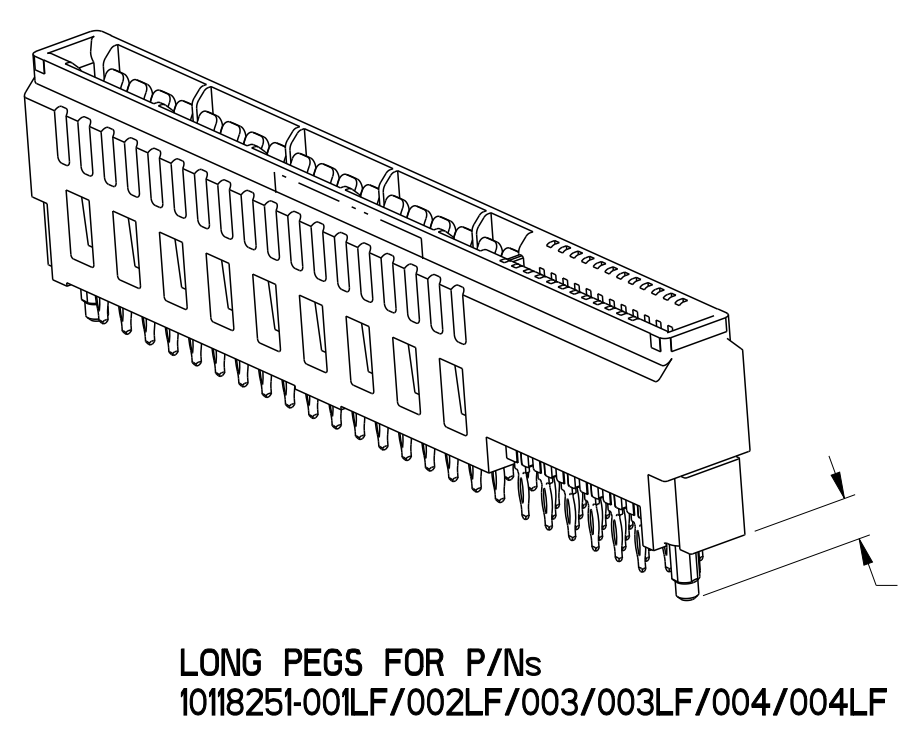
HPCE PART NUMBER (TABLE 3)

PART NUMBER	TAIL TYPE	ORIENTATION KEY	DIM "A" TYPICAL TAIL LENGTH	DIM "B" RECOMMENDED BOARD THICKNESS	DIM "C" REF PEGS LENGTH	SPECIFIED APPLICATION TOOL
10118251-001LF	SOLDER	YES	3.17 ±0.25	1.59 - 2.38	4.00	NO
10118251-002LF	SOLDER	NO				
10118251-003	PRESS-FIT	YES	3.17 ±0.25	1.57 MIN	4.00	YES NOTE 11
10118251-003LF	PRESS-FIT	YES				
10118251-004	PRESS-FIT	NO				
10118251-004LF	PRESS-FIT	NO	3.17 ±0.25	1.59 - 2.38	2.26	NO
10118251-005LF	SOLDER	YES				
10118251-006LF		NO				
10118251-007LF	PRESS-FIT	YES	3.17 ±0.25	1.57 MIN	2.26	YES NOTE 11
10118251-008LF		NO				



NOTES:

- CONNECTOR MATERIALS:  
 HOUSING: HIGH TEMPERATURE THERMAL PLASTIC, BLACK  
 UL 94V-0 COMPLIANT  
 CONTACTS: HIGH PERFORMANCE COPPER ALLOY.
- CONTACT FINISH REF. GS-12-604 SECTION 5.2.
- PRODUCT SPECIFICATION: GS-12-604.
- APPLICATION SPECIFICATION: GS-20-128.
- PRODUCT MARKING (FCI - PART NUMBER & DATE CODE) ON HOUSING IN AREA SHOWN.
- PACKAGING MEETS FCI SPECIFICATION GS-14-937.
- HOUSING COMPONENT WILL WITHSTAND EXPOSURE TO 260°C PEAK TEMPERATURE FOR 60 SECONDS IN A CONVECTION, INFRA-RED, OR VAPOR PHASE REFLOW OVEN.
- COPPER PLATING THICKNESS IN CENTER OF VIA-HOLE CAN BE NO MORE THAN 0.003 LESS THAN OTHER AREAS.
- ALL HOLE SIZES ARE FINISHED HOLE SIZES.
- MOUNTING HOLES ARE UNPLATED  
 Ø 2.40 +/- 0.1 FOR PRESS-FIT TAILS  
 Ø 2.10 +/- 0.1 FOR SOLDER TAILS  
 Ø 2.18 +/- 0.03 FOR SOLDER TAILS WITH LOW INSERTION FORCE CREATED BY PEGS.
- APPLICATION TOOL DRAWING: 10119453.



dr	Wei-Long Zhang	2011/05/20	projection	MM	size	A2	scale	4:1
eng	Wei-Long Zhang	2012/09/17			ecn no	ELX-DG-012747-1		
chr	-	-			product family	CARD EDGE	rel level	Released
appr	Pai-Ming Zheng	2012/09/18			title	VERT RECT (36P 24S)		rev
www.fci.com			cat. no.		-		Product - Customer Drw	
					dwg no	10118251		B
					sheet	4 of 4		

Copyright FCI. FCI