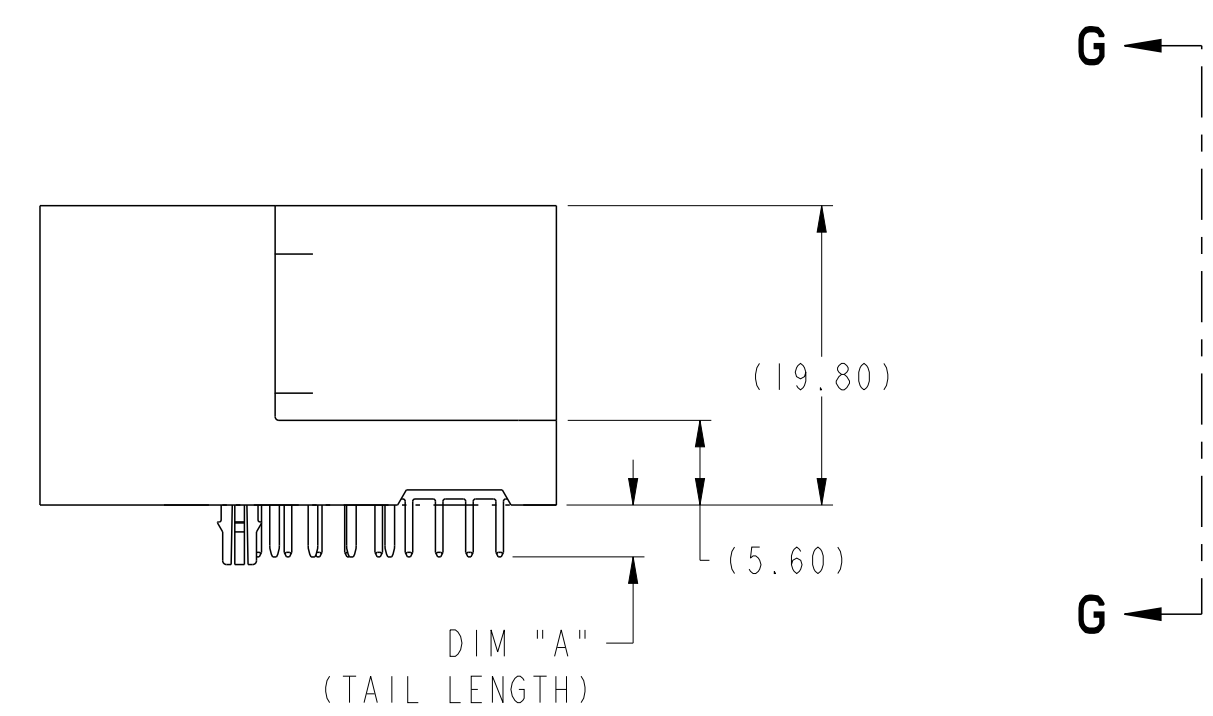
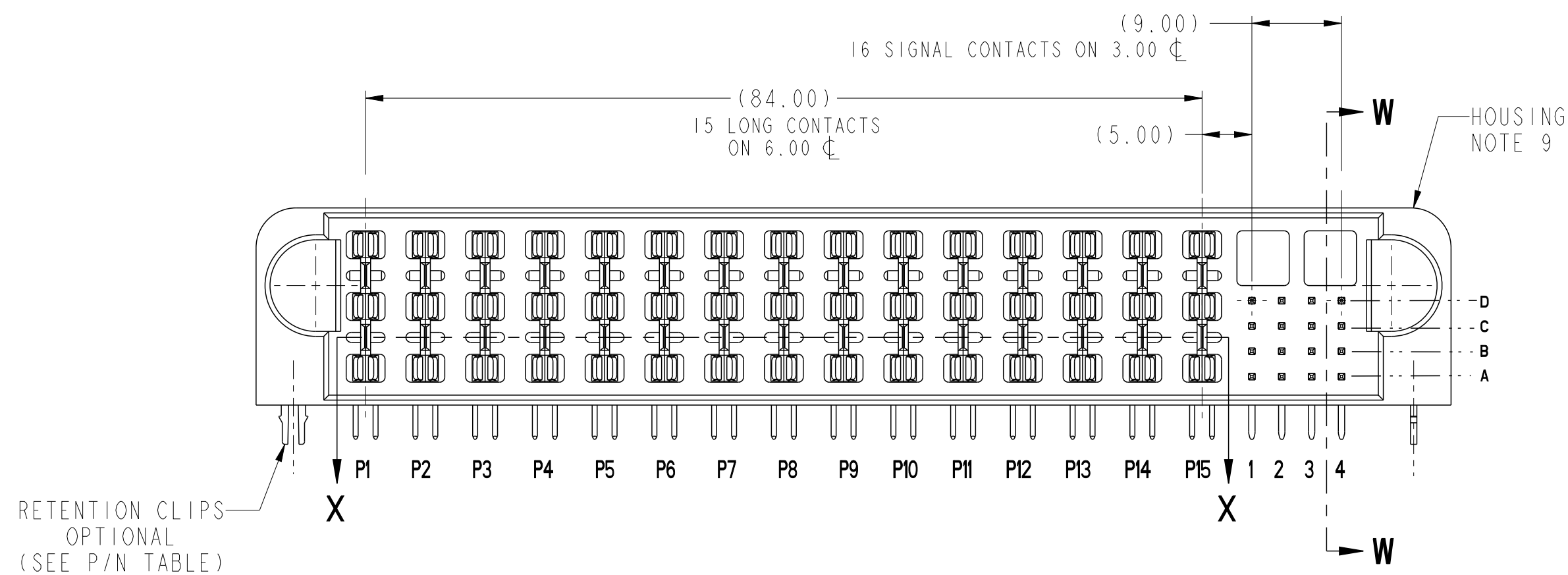


SECTION X-X

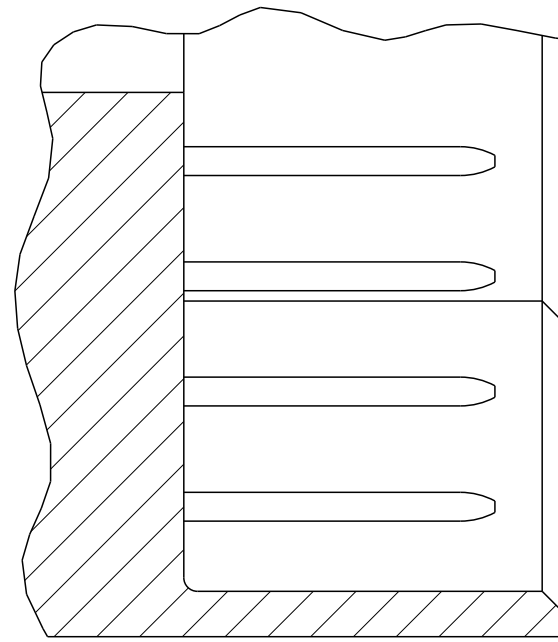


spec ref	*	dr	DuWa	2010/04/28	projection	MM	size	A2	scale	2:1
tolerance std	ASME Y14.5	eng	Helen Zhang	2012/07/23	chr	-	ecn no	-	rel level	Released
surface	✓	appr	Pei-Ming Zheng	2012/07/23	product family	HCI	cat. no.	10106029	rev	A
ASME Y14.5	linear	0.X	±.5	0.XX	±.25	0.XXX	±.10	angular	0°	±2°

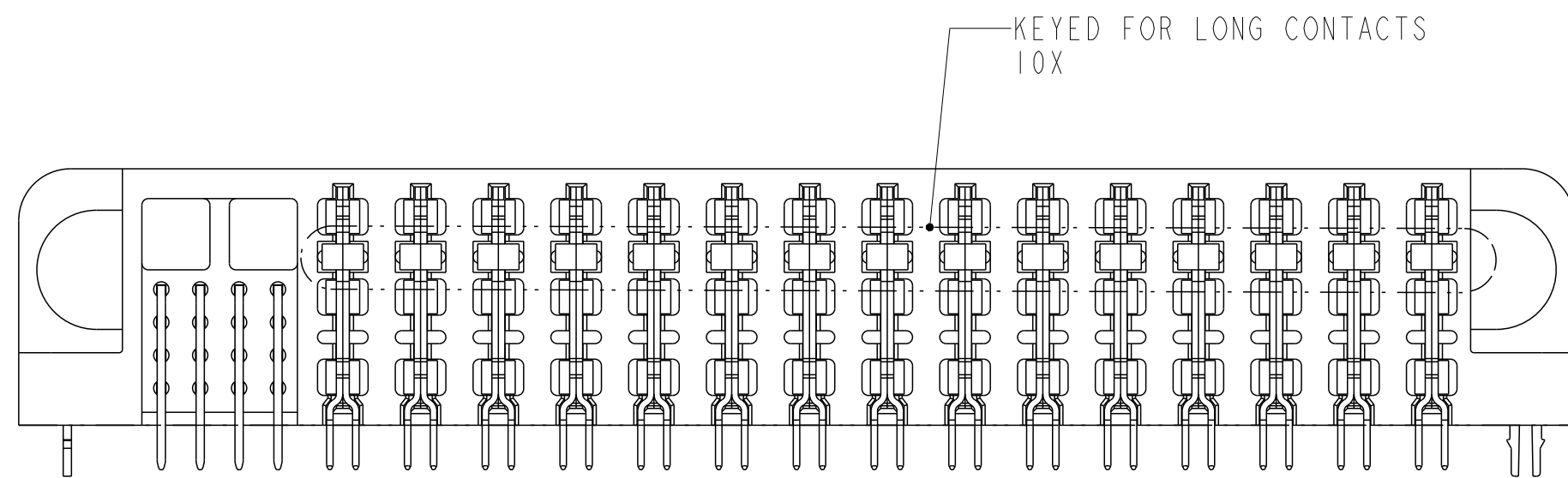
Copyright FCI. FCI

1 2 3 4 5 6 7 8

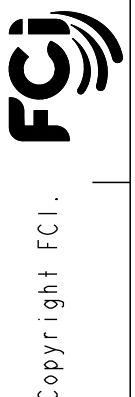
A  
B  
C  
D  
E  
F



**SECTION W-W**  
**SCALE 6:1**  
SIGNAL MATING  
SEQUENCE



**VIEW G-G**

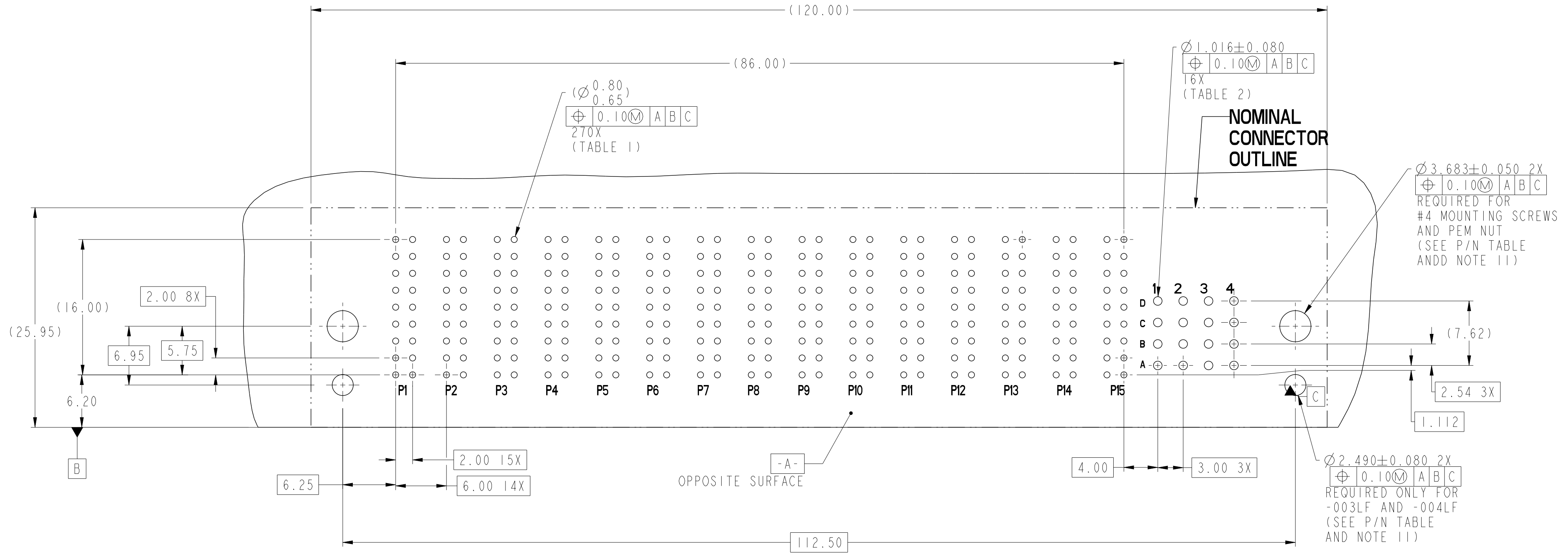


spec ref	*	dr	DuWa	2010/04/28	projection	MM	size	A2	scale	1:1
tolerance std	ASME Y14.5	eng	Helen Zhang	2012/07/23			ecn no	-	rel level	Released
TOLERANCES UNLESS OTHERWISE SPECIFIED		chr	-	2012/07/23			product family	HCI	rel level	Released
surface	ASME Y14.5	appr	Pei-Ming Zheng	2012/07/23			title	R/A HEADER ASSY 15DC-16S	cat. no.	-
linear	0.X ±.5			www.fci.com	title	HCI POWER CONNECTOR	cat. no.	-	Product - Customer Drw	sheet 2 of 5
linear	0.XX ±.25				cat. no.	-	Product - Customer Drw	sheet 2 of 5		
linear	0.XXX ±.10				cat. no.	-	Product - Customer Drw	sheet 2 of 5		
angular	0° ±2°				cat. no.	-	Product - Customer Drw	sheet 2 of 5		
							cat. no.	-	Product - Customer Drw	sheet 2 of 5

PDS: Rev :A

STATUS:Released

Printed: Jul 23, 2012



**RECOMMENDED PCB LAYOUT  
COMPONENT SIDE  
NOTE 6**



Copyright FCI.

spec ref	*	dr	DuWa	2010/04/28	projection	MM	size	A2	scale	1:1
tolerance std	ASME Y14.5	eng	Helen Zhang	2012/07/23			ecn no	-	rel level	Released
TOLERANCES UNLESS OTHERWISE SPECIFIED		chr	-	appr						
surface	ASME Y14.5	linear	0.X	±.5		title R/A HEADER ASSY 15DC-16S HCI POWER CONNECTOR	dwg no 10106029	rev A	Product - Customer Drw	
			0.XX	±.25					cat. no.	sheet 3 of 5
			0.XXX	±.10						
angular	0°	±2°								

A

A

B

B

C

C

D

D

E

E

F

F

TOP LAYER DESCRIPTION

TABLE 1 (HCI POWER)  
PLATED THROUGH-HOLE REQUIREMENTS

TOP LAYER DESCRIPTION	DRILLED HOLE DIAMETER	COPPER THICKNESS	TIN-LEAD THICKNESS	NICKEL THICKNESS	GOLD THICKNESS	TIN THICKNESS	SILVER THICKNESS	FINISHED HOLE DIAMETER
TIN-LEAD	0.81-0.86 (0.85 DRILL)	0.025 - 0.050	0.005 - 0.015	--	--	--	--	0.65 - 0.80
IMMERSION TIN	0.81-0.86 (0.85 DRILL)	0.025 - 0.050	--	--	--	0.9 - 1.5um	--	0.70 - 0.80
IMMERSION SILVER	0.81-0.86 (0.85 DRILL)	0.025 - 0.050	--	--	--	--	0.15 - 0.65um	0.70 - 0.80
COPPER (SEE NOTE 9)	0.81-0.86 (0.85 DRILL)	0.025 - 0.050	--	--	--	--	--	0.70 - 0.80
GOLD	0.81-0.86 (0.85 DRILL)	0.025 - 0.050	--	0.003 - 0.007	FLASH UP TO 0.0002	--	--	0.69 - 0.80

TOP LAYER DESCRIPTION

TABLE 2 (HPC SIGNALS)  
PLATED THROUGH-HOLE REQUIREMENTS

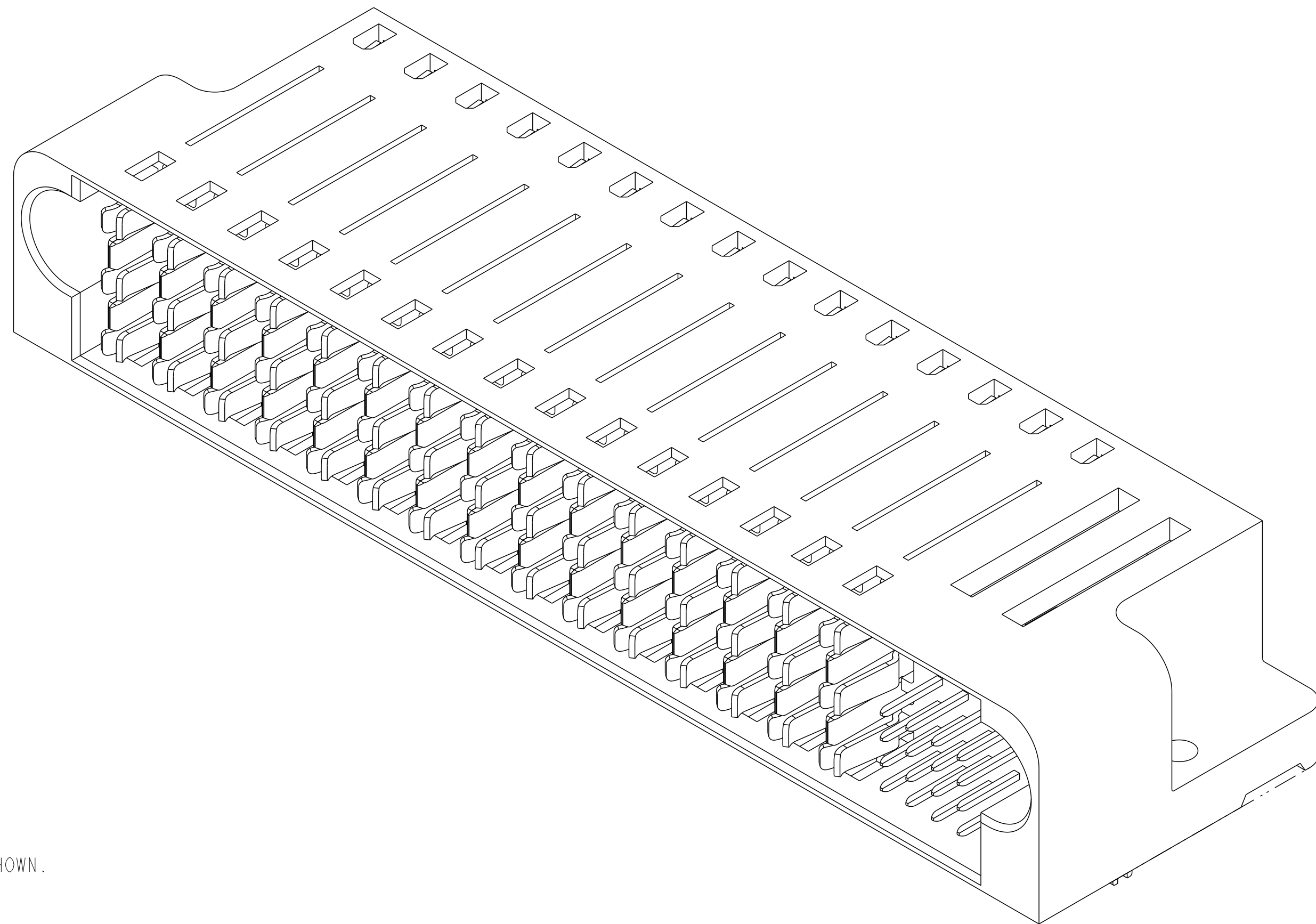
TOP LAYER DESCRIPTION	DRILLED HOLE DIAMETER	COPPER THICKNESS	TIN-LEAD THICKNESS	FINISHED HOLE DIAMETER
TIN-LEAD	1.125-1.175 ( $\varnothing .0453 \pm .0010$ )	0.025-0.050	0.005-0.015	0.94 - 1.10 ( $\varnothing .040 \pm .003$ )



Copyright FCI.

spec ref	*	dr	DuWa	2010/04/28	projection	MM	size	A2	scale	1:1												
tolerance std	-	eng	Helen Zhang	2012/07/23			ecn no	-	rel level	Released												
ASME Y14.5	TOLERANCES UNLESS OTHERWISE SPECIFIED	chr	-	product family							HCI											
surface	<table border="1"> <tr> <td>linear</td> <td>0.X</td> <td>±.5</td> </tr> <tr> <td></td> <td>0.XX</td> <td>±.25</td> </tr> <tr> <td></td> <td>0.XXX</td> <td>±.10</td> </tr> <tr> <td>angular</td> <td>0°</td> <td>±2°</td> </tr> </table>	linear	0.X	±.5								0.XX	±.25		0.XXX	±.10	angular	0°	±2°	appr	Pai-Ming Zheng	2012/07/23
linear	0.X	±.5																				
	0.XX	±.25																				
	0.XXX	±.10																				
angular	0°	±2°																				
ASME Y14.5	www.fci.com	cat. no.	-	Product - Customer Drw	sheet 4 of 5																	

PART NUMBER	RETENTION CLIPS	#4 SCREW	DIM A (TAIL LENGTH)	TAIL TYPE
10106029-001LF	NO	YES	3.43	SOLDER TAIL
10106029-002LF	NO	YES	4.70	SOLDER TAIL
10106029-003LF	YES	NO	3.43	SOLDER TAIL
10106029-004LF	YES	NO	4.70	SOLDER TAIL



NOTES:

1. CONNECTOR MATERIALS:  
HOUSING: HIGH TEMPERATURE THERMOPLASTIC, BLACK  
UL 94V-0 COMPLIANT  
CONTACTS: HIGH PERFORMANCE COPPER ALLOY
2. CONTACT FINISH(REF. GS-12-380 SECTION 5.2)
3. PRODUCT SPECIFICATION: GS-12-380. (IN PROGRESS)
4. APPLICATION SPECIFICATION: GS-20-070. (IN PROGRESS)
5. PRODUCT MARKING (PRODUCT NUMBER & DATE CODE) ON HOUSING IN AREA SHOWN.
6. MINIMUM NOMINAL PCB THICKNESS: 1.6mm
7. PACKAGING MEETS FCI SPECIFICATION GS-14-1073.
8. HOUSING COMPONENT WILL WITHSTAND EXPOSURE TO 260°C PEAK TEMPERATURE FOR 60 SECONDS IN A CONVECTION, INFRA-RED, OR VAPOR PHASE REFLOW OVEN.
9. COPPER PLATING THICKNESS IN CENTER OF VIA-HOLE CAN BE NO MORE THAN 0.003 LESS THAN OTHER AREAS.
10. ALL HOLE SIZES ARE FINISHED HOLE SIZES.
11. MOUNTING HOLES ARE UNPLATED.

spec ref	*	dr	DuWa	2010/04/28	projection	MM	size	A2	scale	1:1
tolerance std	ASME Y14.5	eng	Helen Zhang	2012/07/23			ecn no	-	rel level	Released
TOLERANCES UNLESS OTHERWISE SPECIFIED		chr	-	2012/07/23			product family	HCI	rel level	Released
surface	linear	0.X	±.5		<b>R/A HEADER ASSY 15DC-16S</b> HCI POWER CONNECTOR	www.fci.com	cat. no.	-	Product - Customer Drw	sheet 5 of 5
	0.XX	±.25	dwg no				10106029	rev	A	
	0.XXX	±.10								
ASME Y14.5	angular	0°	±2°							